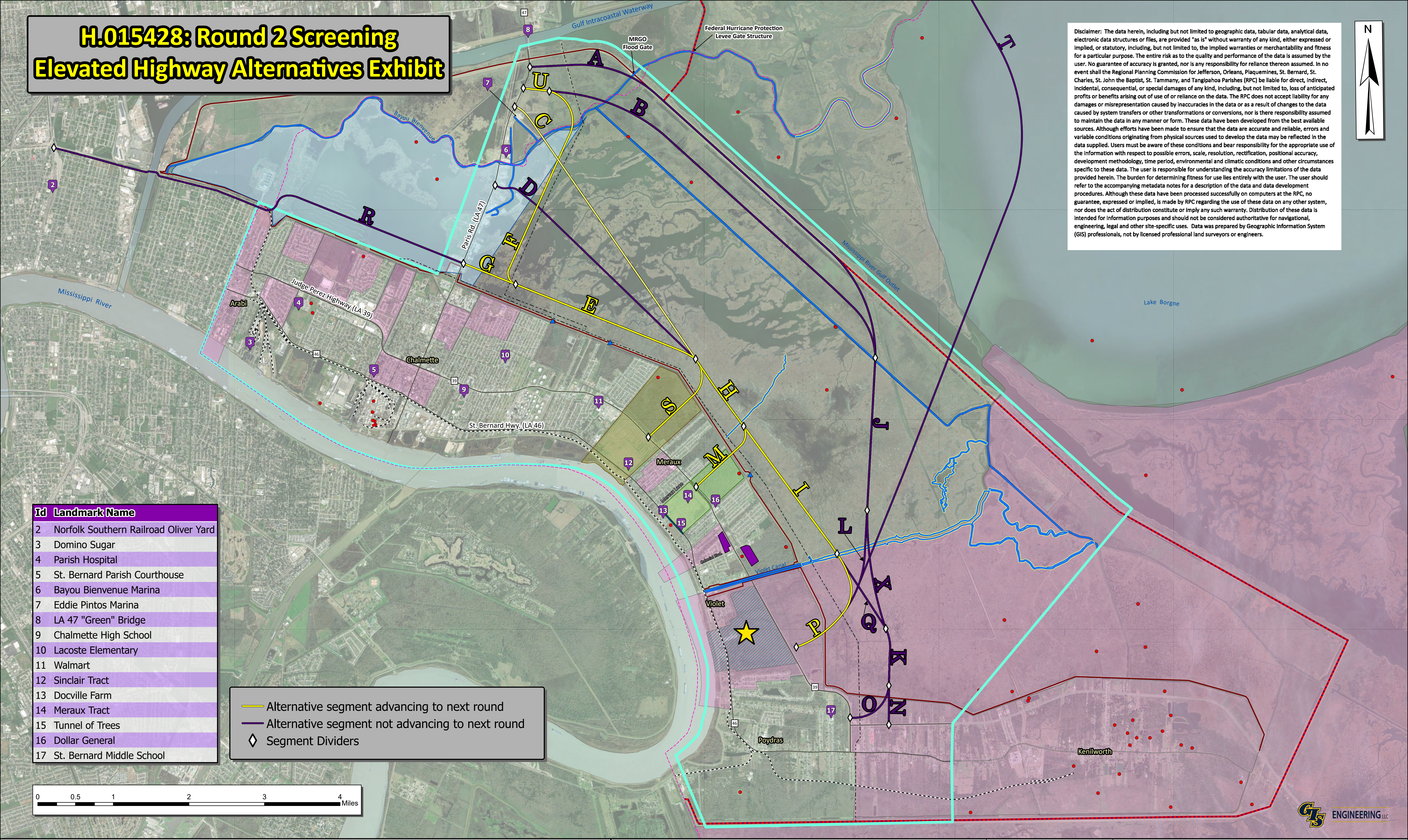
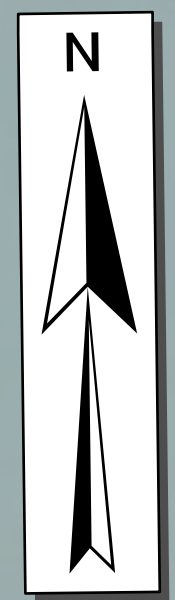


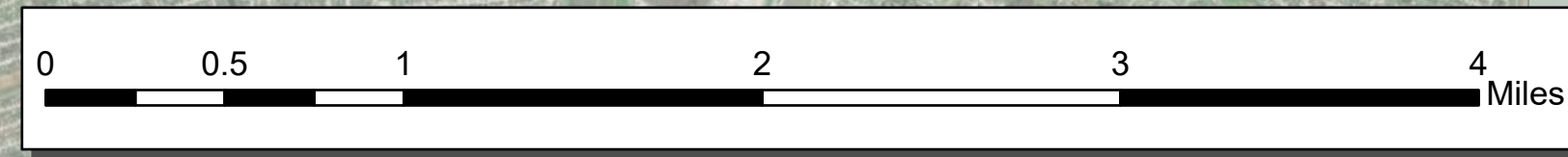
H.015428: Round 2 Screening Elevated Highway Alternatives Exhibit

Disclaimer: The data herein, including but not limited to geographic data, tabular data, analytical data, electronic data structures or files, are provided "as is" without warranty of any kind, either expressed or implied, or statutory, including, but not limited to, the implied warranties or merchantability and fitness for a particular purpose. The entire risk as to the quality and performance of the data is assumed by the user. No guarantee of accuracy is granted, nor is any responsibility for reliance thereon assumed. In no event shall the Regional Planning Commission for Jefferson, Orleans, Plaquemines, St. Bernard, St. Charles, St. John the Baptist, St. Tammany, and Tangipahoa Parishes (RPC) be liable for direct, indirect, incidental, consequential, or special damages of any kind, including, but not limited to, loss of anticipated profits or benefits arising out of use of or reliance on the data. The RPC does not accept liability for any damages or misrepresentation caused by inaccuracies in the data or as a result of changes to the data caused by system transfers or other transformations or conversions, nor is there responsibility assumed to maintain the data in any manner or form. These data have been developed from the best available sources. Although efforts have been made to ensure that the data are accurate and reliable, errors and variable conditions originating from physical sources used to develop the data may be reflected in the data supplied. Users must be aware of these conditions and bear responsibility for the appropriate use of the information with respect to possible errors, scale, resolution, rectification, positional accuracy, development methodology, time period, environmental and climatic conditions and other circumstances specific to these data. The user is responsible for understanding the accuracy limitations of the data provided herein. The burden for determining fitness for use lies entirely with the user. The user should refer to the accompanying metadata notes for a description of the data and data development procedures. Although these data have been processed successfully on computers at the RPC, no guarantee, expressed or implied, is made by RPC regarding the use of these data on any other system, nor does the act of distribution constitute or imply any such warranty. Distribution of these data is intended for information purposes and should not be considered authoritative for navigational, engineering, legal and other site-specific uses. Data was prepared by Geographic Information System (GIS) professionals, not by licensed professional land surveyors or engineers.



Id	Landmark Name
2	Norfolk Southern Railroad Oliver Yard
3	Domino Sugar
4	Parish Hospital
5	St. Bernard Parish Courthouse
6	Bayou Bienvenue Marina
7	Eddie Pintos Marina
8	LA 47 "Green" Bridge
9	Chalmette High School
10	Lacoste Elementary
11	Walmart
12	Sinclair Tract
13	Docville Farm
14	Meraux Tract
15	Tunnel of Trees
16	Dollar General
17	St. Bernard Middle School

- Alternative segment advancing to next round
- Alternative segment not advancing to next round
- ◇ Segment Dividers



Legend			
	St. Bernard Parish Boundary		Sinclair Tract
	RPC Study Area		Meraux Tract
	Proposed LIT Facility		St. Bernard Scenic Rivers
	Oil & Gas Wells		Navigable Waterways
	Existing Pump Station		Federal Hurricane Protection Levee
			Vulnerable Communities
			High Voltage Transmission Line
			State Highways in Study Area
			St. Bernard Parish Railroads

NEW ORLEANS REGIONAL PLANNING COMMISSION
 STATE PROJECT NO. H.015428
 LOWER ST. BERNARD ROADWAY NETWORK & RESILIENCE STUDY
 ST. BERNARD PARISH, LOUISIANA

Round 2 Screening Elevated Highway Alternatives Exhibit	
GIS Project No.	39130-1459
Date Printed	1/28/2025
Drawn By	BTF
Checked By	SRM

