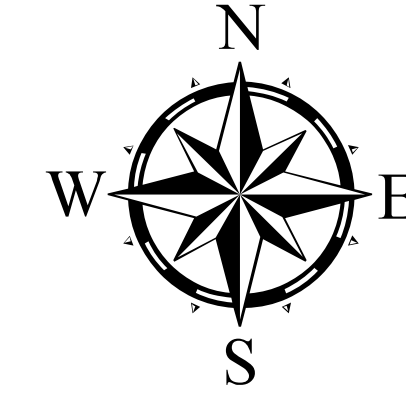


# Enterprise Zones Eligible Blockgroups as determined by the Census 2010 for Jefferson Parish

Map prepared by Regional Planning Commission for Jefferson, Orleans, Plaquemines, St. Bernard, St. Tammany and Tangipahoa Parishes, 9/9/2013  
Data from Enterprise Zone Program, Louisiana Economic Development, 2013  
Street base from LADOTD, 2012

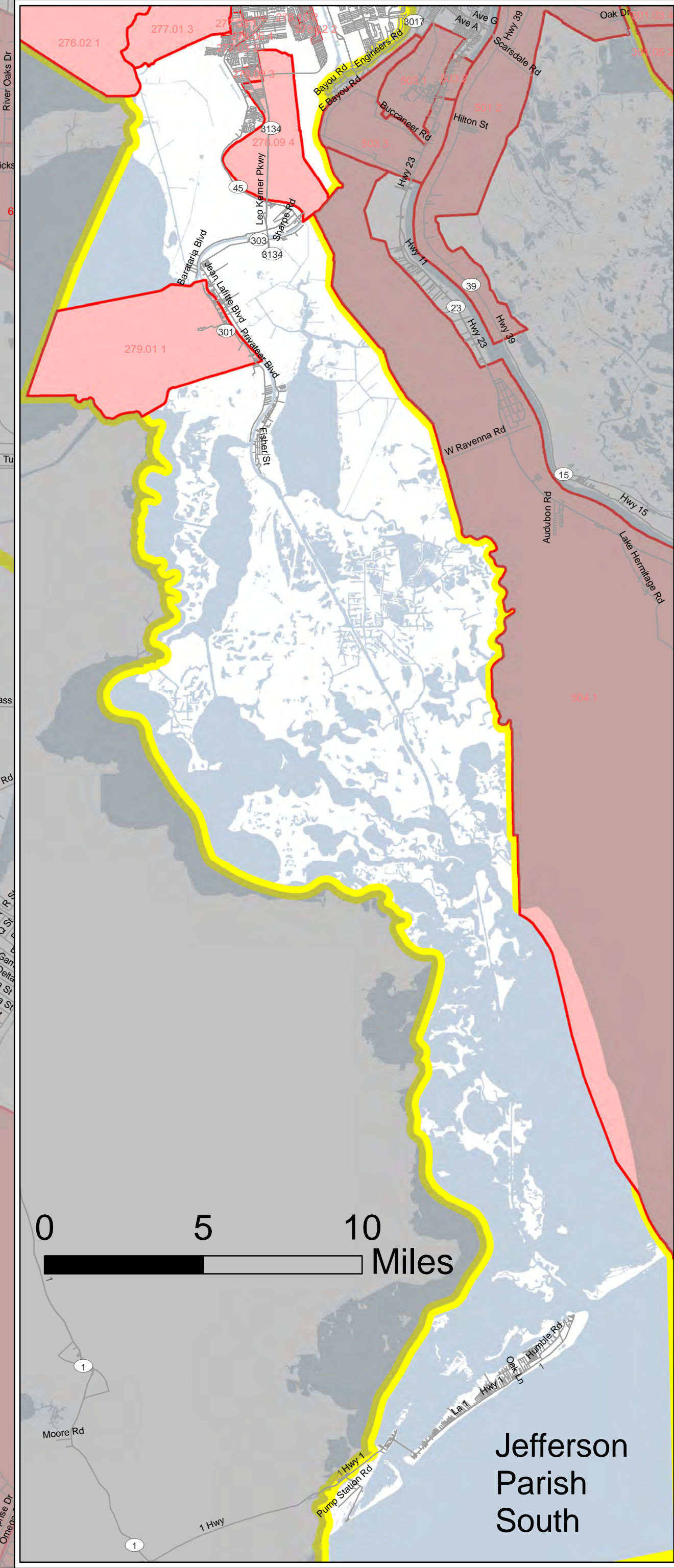
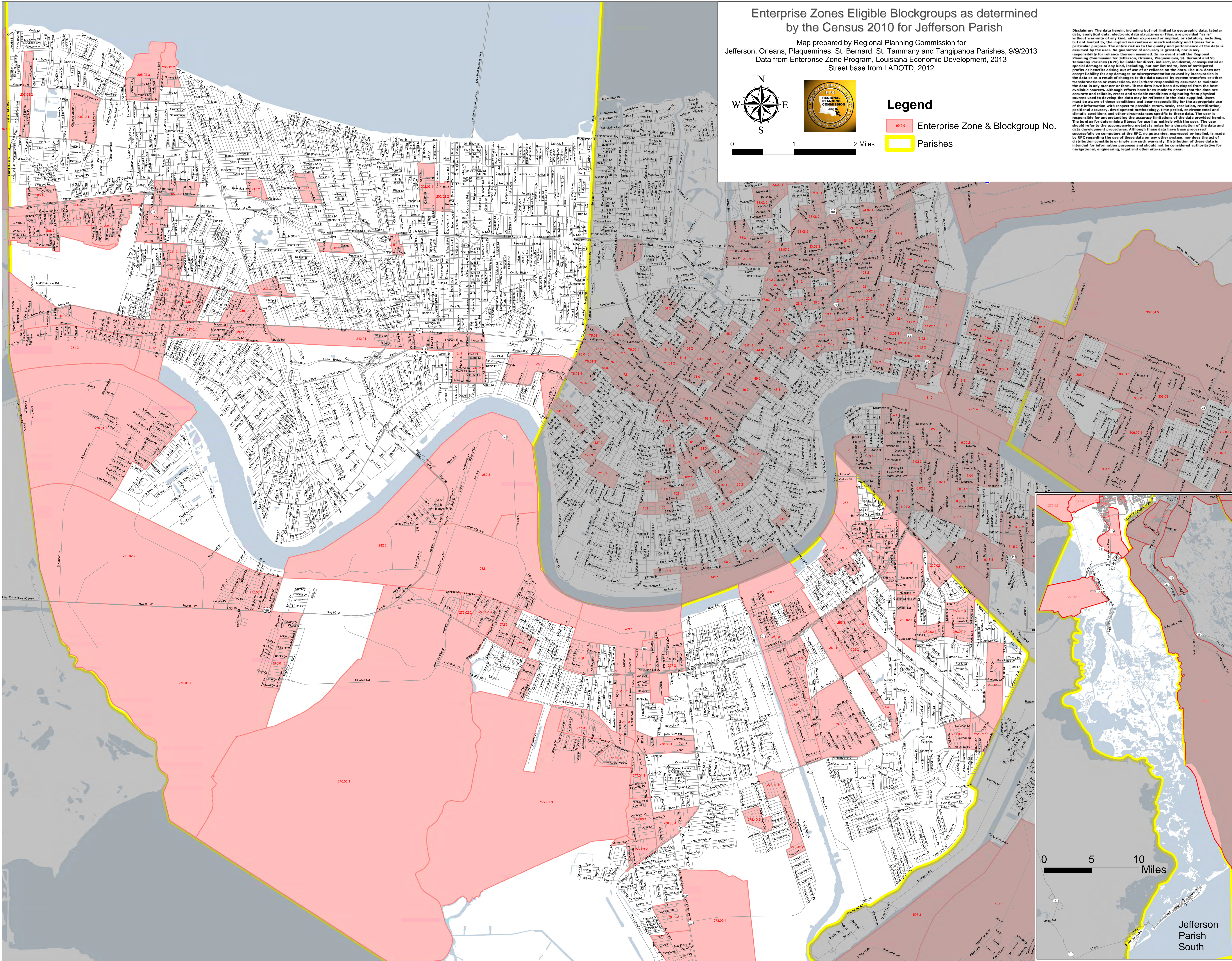


## Legend

- Enterprise Zone & Blockgroup No.
- Parishes



Disclaimer: The data herein, including but not limited to geographic data, tabular data, analytical data, electronic data structures or files, are provided "as is" without warranty of any kind, either expressed or implied, or statutory, including, but not limited to, the implied warranties or merchantability and fitness for a particular purpose. The entire risk as to the quality and performance of the data is assumed by the user. No guarantee of accuracy is granted, nor is any responsibility for reliance thereon assumed. In no event shall the Regional Planning Commission for Jefferson, Orleans, Plaquemines, St. Bernard and St. Tammany Parishes (RPC) be liable for direct, indirect, incidental, consequential or special damages of any kind, including, but not limited to, loss of anticipated profits or benefits arising out of use of or reliance on the data. The RPC does not accept liability for any damages or misrepresentation caused by inaccuracies in the data or as a result of changes to the data caused by system transfers or other transformations or conversions, nor is there responsibility assumed to maintain the data in any manner or form. These data have been developed from the best available sources. Although efforts have been made to ensure that the data are accurate and reliable, errors and variable conditions originating from physical sources used to develop the data may be reflected in the data supplied. Users must be aware of these conditions and bear responsibility for the appropriate use of the information with respect to possible errors, scale, resolution, rectification, positional accuracy, development methodology, time period, environmental and climatic conditions and other circumstances specific to these data. The user is responsible for understanding the accuracy limitations of the data provided herein. The bases for determining fitness for use lie entirely with the user. The user should refer to the accompanying metadata notes for a description of the data and data development procedures. Although these data have been processed successfully on computers at the RPC, no guarantee, expressed or implied, is made by RPC regarding the use of these data on any other system, and does the act of distribution constitute or imply any such warranty. Distribution of these data is intended for information purposes and should not be considered authoritative for navigational, engineering, legal and other site-specific uses.



Jefferson Parish South