

Regional Comparison by Industry

Comparing Energy across 7 Regions

Emsi Q4 2017 Data Set

December 2017

Regional Planning Commission



10 Veterans Blvd.
New Orleans, Louisiana 70124

Parameters

Industries

47 items selected. See Appendix A for details.

Region

Code	Description	Level
Group	5 Parish Region	FIPS
Group	New Orleans MSA	FIPS
22051	Jefferson Parish, LA	FIPS
22071	Orleans Parish, LA	FIPS
22075	Plaquemines Parish, LA	FIPS
22087	St. Bernard Parish, LA	FIPS
22103	St. Tammany Parish, LA	FIPS

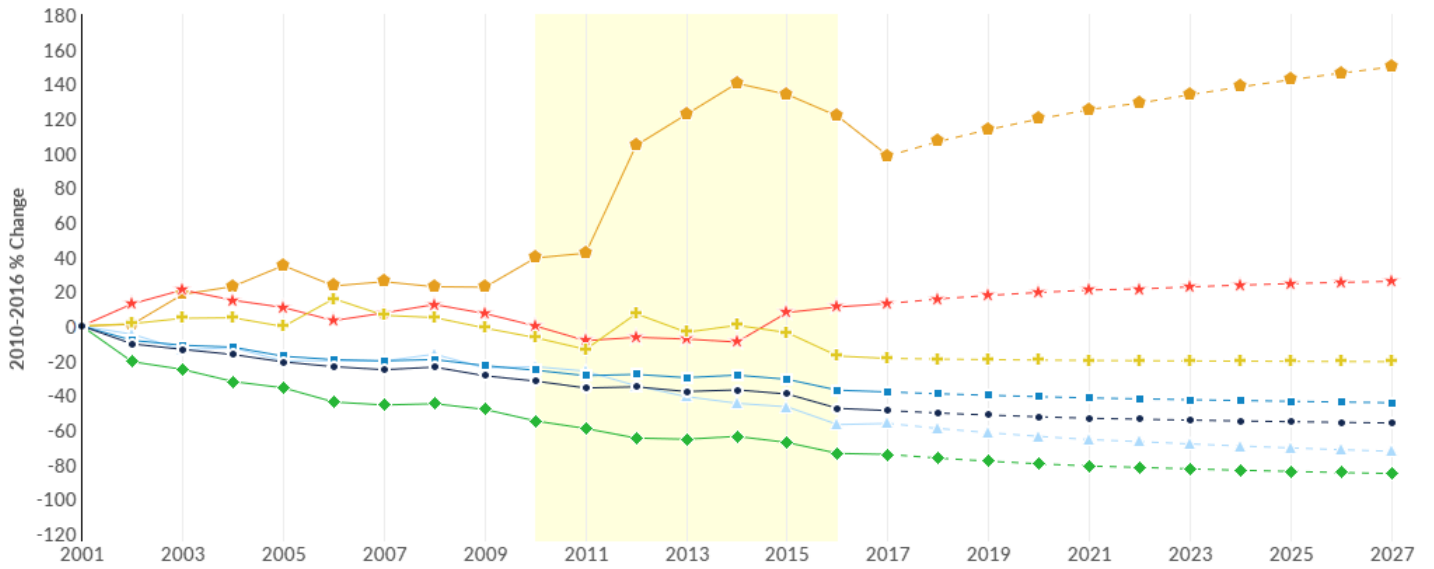
Timeframe

2010 - 2016

Datarun

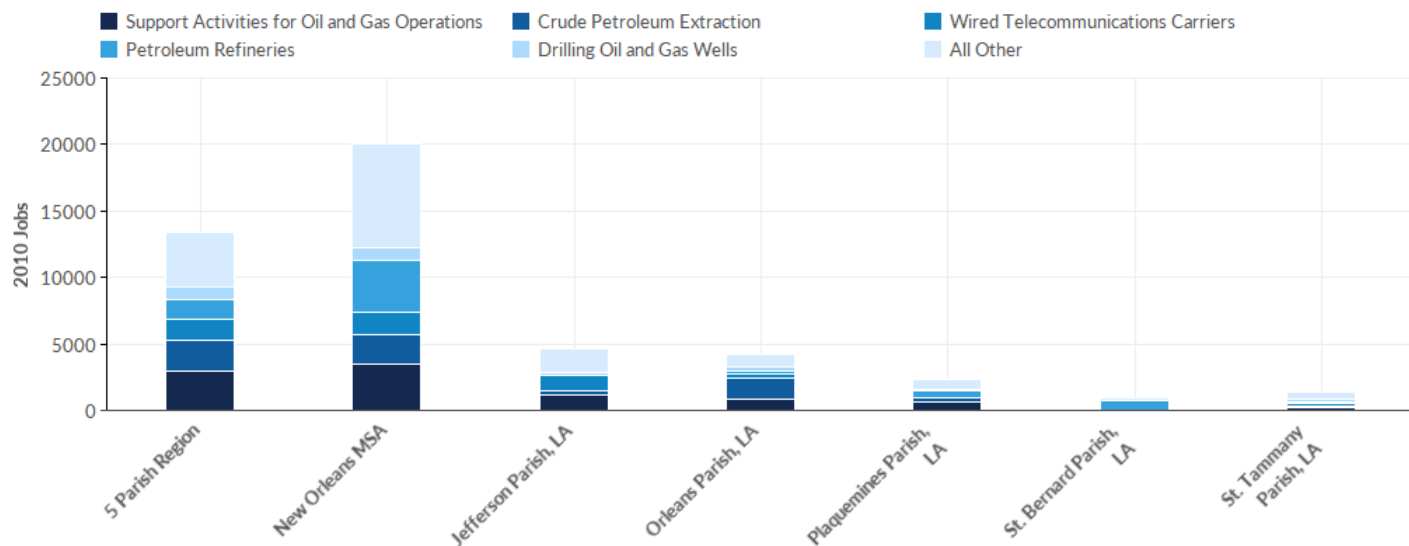
2017.4 - QCEW Employees

Industry Change Summary



Region	2010 Jobs	2016 Jobs	Change	% Change	2017 Average Earnings	2017 Payrolled Business Locations
● 5 Parish Region	13,388	10,292	-3,096	-23%	\$156,641	417
■ New Orleans MSA	20,040	16,925	-3,115	-16%	\$158,249	493
▲ Jefferson Parish, LA	4,612	2,592	-2,020	-44%	\$111,684	149
◆ Orleans Parish, LA	4,168	2,434	-1,734	-42%	\$207,756	91
⊕ Plaquemines Parish, LA	2,292	2,032	-260	-11%	\$152,669	57
★ St. Bernard Parish, LA	925	1,027	102	11%	\$185,000	17
⬢ St. Tammany Parish, LA	1,391	2,208	817	59%	\$144,046	104

Industry Breakdown - 2010 Jobs

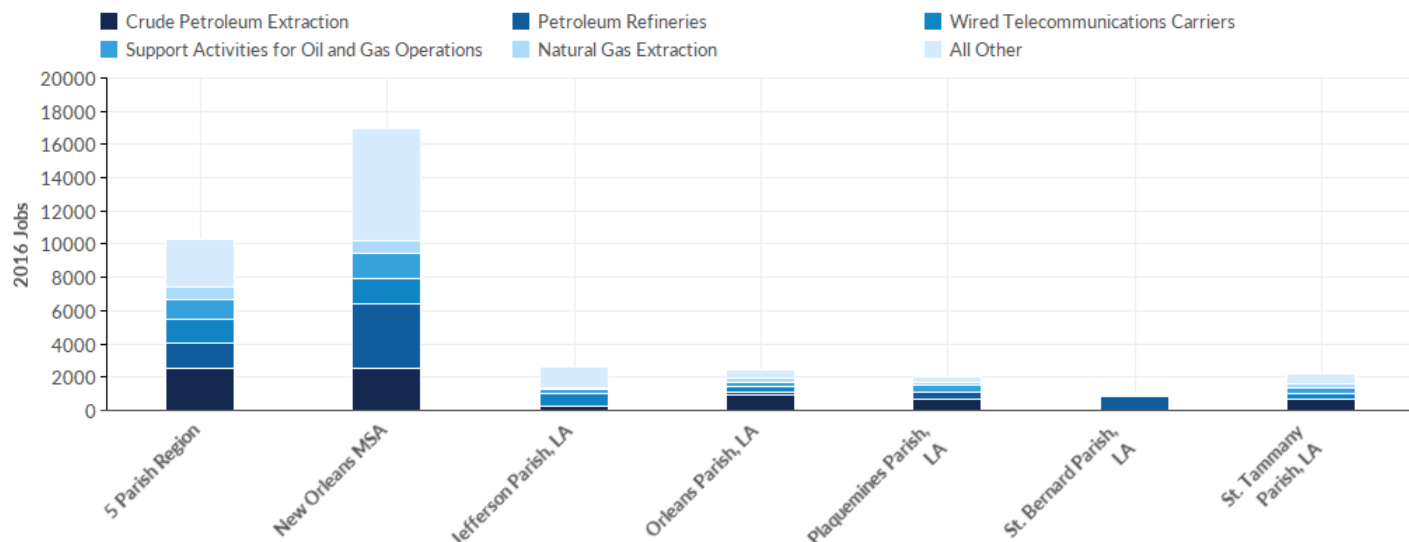


Industry	Description	5 Parish Region	New Orleans MSA	Jefferson Parish, LA	Orleans Parish, LA	Plaquemines Parish, LA	St. Bernard Parish, LA	St. Tammany Parish, LA
213112	Support Activities for Oil and Gas Operations	2,958	3,437	1,193	859	659	11	236
211120	Crude Petroleum Extraction	2,281	2,287	316	1,601	326	<10	37
517311	Wired Telecommunications Carriers	1,627	1,680	1,094	239	<10	11	277
324110	Petroleum Refineries	1,503	3,858	27	219	461	731	66
213111	Drilling Oil and Gas Wells	929	929	259	322	89	0	259
221122	Electric Power Distribution	714	832	347	137	46	33	150
562910	Remediation Services	552	632	115	119	190	40	88
211130	Natural Gas Extraction	537	546	69	383	71	<10	<10
325110	Petrochemical Manufacturing	346	671	0	0	346	0	0
325120	Industrial Gas Manufacturing	282	436	195	36	0	0	51
562212	Solid Waste Landfill	258	286	215	0	0	0	43
221210	Natural Gas Distribution	248	284	75	80	22	28	44
517911	Telecommunications Resellers	143	143	111	<10	0	0	25
486210	Pipeline Transportation of Natural Gas	139	139	86	0	11	15	27
486110	Pipeline Transportation of Crude Oil	121	167	96	0	21	<10	0
	Total	13,388	20,040	4,612	4,168	2,292	925	1,391

Industry	Description	5 Parish Region	New Orleans MSA	Jefferson Parish, LA	Orleans Parish, LA	Plaquemines Parish, LA	St. Bernard Parish, LA	St. Tammany Parish, LA
541360	Geophysical Surveying and Mapping Services	105	105	38	35	0	0	32
325180	Other Basic Inorganic Chemical Manufacturing	85	1,052	65	<10	0	0	20
221121	Electric Bulk Power Transmission and Control	73	78	53	19	0	<10	0
213113	Support Activities for Coal Mining	67	67	67	0	0	0	0
221320	Sewage Treatment Facilities	61	61	43	0	0	0	17
325312	Phosphatic Fertilizer Manufacturing	55	55	55	0	0	0	0
221112	Fossil Fuel Electric Power Generation	51	91	50	<10	0	0	0
212230	Copper, Nickel, Lead, and Zinc Mining	50	50	0	50	0	0	0
324199	All Other Petroleum and Coal Products Manufacturing	46	79	<10	0	0	44	0
454310	Fuel Dealers	44	74	<10	32	0	0	<10
325194	Cyclic Crude, Intermediate, and Gum and Wood Chemical Manufacturing	37	37	0	0	36	0	<10
325320	Pesticide and Other Agricultural Chemical Manufacturing	36	639	36	0	0	0	0
486910	Pipeline Transportation of Refined Petroleum Products	33	33	0	24	<10	0	0
221111	Hydroelectric Power Generation	<10	<10	0	<10	0	0	0
212221	Gold Ore Mining	<10	<10	0	<10	0	0	0
221115	Wind Electric Power Generation	0	0	0	0	0	0	0
221114	Solar Electric Power Generation	0	0	0	0	0	0	0
221117	Biomass Electric Power Generation	0	0	0	0	0	0	0
221116	Geothermal Electric Power Generation	0	0	0	0	0	0	0
	Total	13,388	20,040	4,612	4,168	2,292	925	1,391

Industry	Description	5 Parish Region	New Orleans MSA	Jefferson Parish, LA	Orleans Parish, LA	Plaquemines Parish, LA	St. Bernard Parish, LA	St. Tammany Parish, LA
486990	All Other Pipeline Transportation	0	0	0	0	0	0	0
325193	Ethyl Alcohol Manufacturing	0	0	0	0	0	0	0
221118	Other Electric Power Generation	0	0	0	0	0	0	0
221113	Nuclear Electric Power Generation	0	649	0	0	0	0	0
212299	All Other Metal Ore Mining	0	0	0	0	0	0	0
212111	Bituminous Coal and Lignite Surface Mining	0	0	0	0	0	0	0
325199	All Other Basic Organic Chemical Manufacturing	0	368	0	0	0	0	0
325212	Synthetic Rubber Manufacturing	0	268	0	0	0	0	0
212112	Bituminous Coal Underground Mining	0	0	0	0	0	0	0
212113	Anthracite Mining	0	0	0	0	0	0	0
212291	Uranium-Radium-Vanadium Ore Mining	0	0	0	0	0	0	0
212222	Silver Ore Mining	0	0	0	0	0	0	0
212210	Iron Ore Mining	0	0	0	0	0	0	0
	Total	13,388	20,040	4,612	4,168	2,292	925	1,391

Industry Breakdown - 2016 Jobs

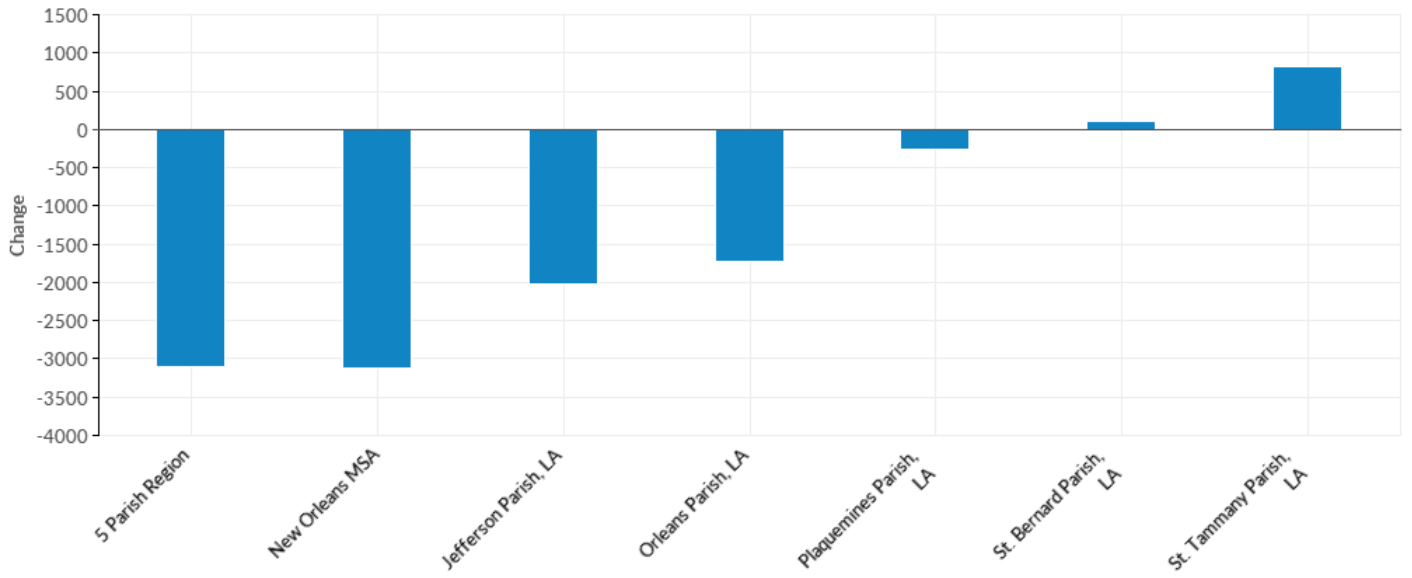


Industry	Description	5 Parish Region	New Orleans MSA	Jefferson Parish, LA	Orleans Parish, LA	Plaquemines Parish, LA	St. Bernard Parish, LA	St. Tammany Parish, LA
211120	Crude Petroleum Extraction	2,563	2,568	257	956	648	<10	701
324110	Petroleum Refineries	1,521	3,829	<10	175	459	882	0
517311	Wired Telecommunications Carriers	1,419	1,509	745	317	<10	29	324
213112	Support Activities for Oil and Gas Operations	1,189	1,586	240	207	411	<10	329
211130	Natural Gas Extraction	697	700	67	257	160	<10	210
221122	Electric Power Distribution	487	565	191	51	77	15	153
213111	Drilling Oil and Gas Wells	432	434	219	102	0	0	111
562910	Remediation Services	399	499	102	66	135	46	51
562212	Solid Waste Landfill	322	441	272	0	0	0	50
221112	Fossil Fuel Electric Power Generation	161	222	129	32	0	0	0
221210	Natural Gas Distribution	159	181	59	63	0	<10	33
486110	Pipeline Transportation of Crude Oil	146	176	64	0	0	<10	73
325180	Other Basic Inorganic Chemical Manufacturing	120	1,290	11	11	83	0	15
541360	Geophysical Surveying and Mapping Services	98	98	<10	53	0	0	36
	Total	10,292	16,925	2,592	2,434	2,032	1,027	2,208

Industry	Description	5 Parish Region	New Orleans MSA	Jefferson Parish, LA	Orleans Parish, LA	Plaquemines Parish, LA	St. Bernard Parish, LA	St. Tammany Parish, LA
517911	Telecommunications Resellers	77	77	42	<10	0	0	31
486210	Pipeline Transportation of Natural Gas	74	74	24	0	43	<10	<10
325120	Industrial Gas Manufacturing	71	387	17	<10	0	0	53
325212	Synthetic Rubber Manufacturing	57	391	0	57	0	0	0
325312	Phosphatic Fertilizer Manufacturing	56	56	54	0	0	0	<10
221121	Electric Bulk Power Transmission and Control	52	58	13	38	0	0	<10
212230	Copper, Nickel, Lead, and Zinc Mining	43	43	0	43	0	0	0
325199	All Other Basic Organic Chemical Manufacturing	38	215	38	0	0	0	0
221320	Sewage Treatment Facilities	30	30	13	<10	0	0	16
324199	All Other Petroleum and Coal Products Manufacturing	29	60	0	0	0	29	0
454310	Fuel Dealers	28	51	21	0	0	0	<10
325194	Cyclic Crude, Intermediate, and Gum and Wood Chemical Manufacturing	12	12	0	0	0	0	12
486910	Pipeline Transportation of Refined Petroleum Products	<10	<10	0	0	<10	0	0
325110	Petrochemical Manufacturing	<10	<10	0	0	<10	<10	0
325320	Pesticide and Other Agricultural Chemical Manufacturing	<10	693	<10	0	0	0	0
213113	Support Activities for Coal Mining	0	0	0	0	0	0	0
221111	Hydroelectric Power Generation	0	0	0	0	0	0	0
221116	Geothermal Electric Power Generation	0	0	0	0	0	0	0
221117	Biomass Electric Power Generation	0	0	0	0	0	0	0
212221	Gold Ore Mining	0	0	0	0	0	0	0
	Total	10,292	16,925	2,592	2,434	2,032	1,027	2,208

Industry	Description	5 Parish Region	New Orleans MSA	Jefferson Parish, LA	Orleans Parish, LA	Plaquemines Parish, LA	St. Bernard Parish, LA	St. Tammany Parish, LA
486990	All Other Pipeline Transportation	0	0	0	0	0	0	0
325193	Ethyl Alcohol Manufacturing	0	0	0	0	0	0	0
221118	Other Electric Power Generation	0	0	0	0	0	0	0
221114	Solar Electric Power Generation	0	0	0	0	0	0	0
221115	Wind Electric Power Generation	0	0	0	0	0	0	0
212113	Anthracite Mining	0	0	0	0	0	0	0
212112	Bituminous Coal Underground Mining	0	0	0	0	0	0	0
212111	Bituminous Coal and Lignite Surface Mining	0	0	0	0	0	0	0
212210	Iron Ore Mining	0	0	0	0	0	0	0
212222	Silver Ore Mining	0	0	0	0	0	0	0
221113	Nuclear Electric Power Generation	0	668	0	0	0	0	0
212299	All Other Metal Ore Mining	0	0	0	0	0	0	0
212291	Uranium-Radium-Vanadium Ore Mining	0	0	0	0	0	0	0
	Total	10,292	16,925	2,592	2,434	2,032	1,027	2,208

Industry Breakdown - Change

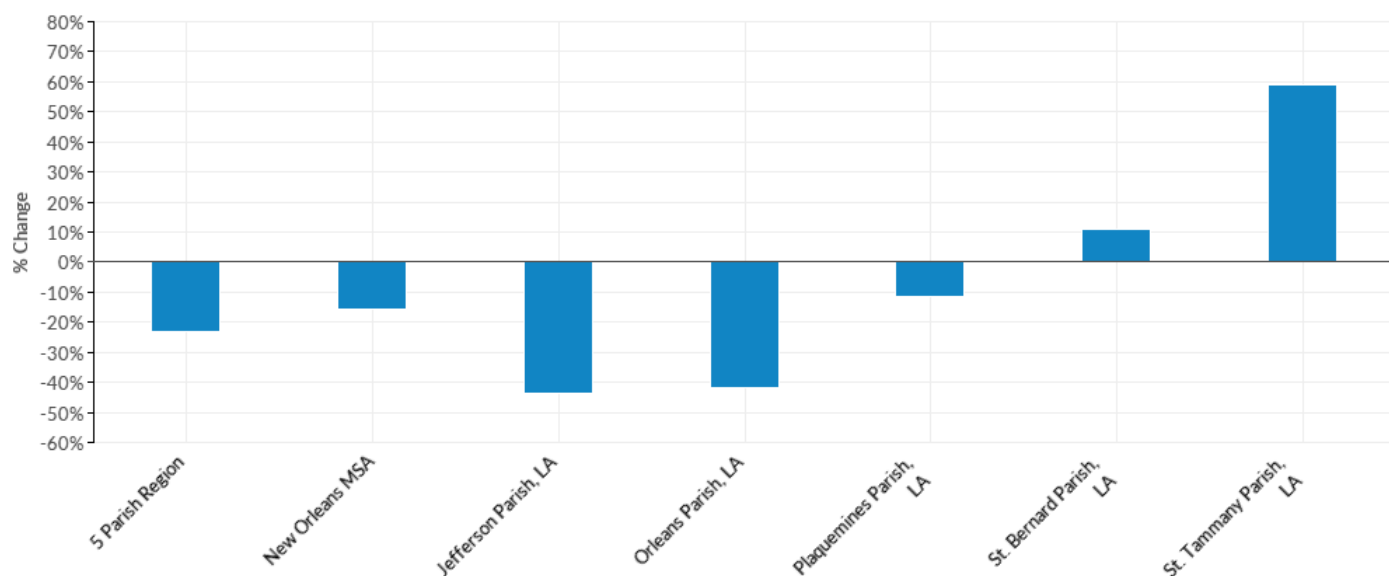


Industry	Description	5 Parish Region	New Orleans MSA	Jefferson Parish, LA	Orleans Parish, LA	Plaquemines Parish, LA	St. Bernard Parish, LA	St. Tammany Parish, LA
211120	Crude Petroleum Extraction	282	281	-59	-645	322	--	664
211130	Natural Gas Extraction	160	154	-2	-126	89	--	--
221112	Fossil Fuel Electric Power Generation	110	131	79	--	0	0	0
562212	Solid Waste Landfill	64	155	57	0	0	0	7
325212	Synthetic Rubber Manufacturing	57	123	0	57	0	0	0
325199	All Other Basic Organic Chemical Manufacturing	38	-153	38	0	0	0	0
325180	Other Basic Inorganic Chemical Manufacturing	35	238	-54	--	83	0	-5
486110	Pipeline Transportation of Crude Oil	25	9	-32	0	-21	--	73
324110	Petroleum Refineries	18	-29	--	-44	-2	151	-66
325312	Phosphatic Fertilizer Manufacturing	1	1	-1	0	0	0	--
212112	Bituminous Coal Underground Mining	0	0	0	0	0	0	0
212113	Anthracite Mining	0	0	0	0	0	0	0
212111	Bituminous Coal and Lignite Surface Mining	0	0	0	0	0	0	0
	Total	-3,096	-3,115	-2,020	-1,734	-260	102	817

Industry	Description	5 Parish Region	New Orleans MSA	Jefferson Parish, LA	Orleans Parish, LA	Plaquemines Parish, LA	St. Bernard Parish, LA	St. Tammany Parish, LA
212210	Iron Ore Mining	0	0	0	0	0	0	0
221116	Geothermal Electric Power Generation	0	0	0	0	0	0	0
221115	Wind Electric Power Generation	0	0	0	0	0	0	0
221117	Biomass Electric Power Generation	0	0	0	0	0	0	0
221118	Other Electric Power Generation	0	0	0	0	0	0	0
486990	All Other Pipeline Transportation	0	0	0	0	0	0	0
325193	Ethyl Alcohol Manufacturing	0	0	0	0	0	0	0
221114	Solar Electric Power Generation	0	0	0	0	0	0	0
221113	Nuclear Electric Power Generation	0	19	0	0	0	0	0
212291	Uranium-Radium-Vanadium Ore Mining	0	0	0	0	0	0	0
212222	Silver Ore Mining	0	0	0	0	0	0	0
212299	All Other Metal Ore Mining	0	0	0	0	0	0	0
212221	Gold Ore Mining	--	--	0	--	0	0	0
541360	Geophysical Surveying and Mapping Services	-7	-7	--	18	0	0	4
212230	Copper, Nickel, Lead, and Zinc Mining	-7	-7	0	-7	0	0	0
221111	Hydroelectric Power Generation	--	--	0	--	0	0	0
454310	Fuel Dealers	-16	-23	--	-32	0	0	--
324199	All Other Petroleum and Coal Products Manufacturing	-17	-19	--	0	0	-15	0
221121	Electric Bulk Power Transmission and Control	-21	-20	-40	19	0	--	--
325194	Cyclic Crude, Intermediate, and Gum and Wood Chemical Manufacturing	-25	-25	0	0	-36	0	--
	Total	-3,096	-3,115	-2,020	-1,734	-260	102	817

Industry	Description	5 Parish Region	New Orleans MSA	Jefferson Parish, LA	Orleans Parish, LA	Plaquemines Parish, LA	St. Bernard Parish, LA	St. Tammany Parish, LA
486910	Pipeline Transportation of Refined Petroleum Products	--	--	0	-24	--	0	0
221320	Sewage Treatment Facilities	-31	-31	-30	--	0	0	-1
325320	Pesticide and Other Agricultural Chemical Manufacturing	--	54	--	0	0	0	0
486210	Pipeline Transportation of Natural Gas	-65	-65	-62	0	32	--	--
517911	Telecommunications Resellers	-66	-66	-69	--	0	0	6
213113	Support Activities for Coal Mining	-67	-67	-67	0	0	0	0
221210	Natural Gas Distribution	-89	-103	-16	-17	-22	--	-11
562910	Remediation Services	-153	-133	-13	-53	-55	6	-37
517311	Wired Telecommunications Carriers	-208	-171	-349	78	--	18	47
325120	Industrial Gas Manufacturing	-211	-49	-178	--	0	0	2
221122	Electric Power Distribution	-227	-267	-156	-86	31	-18	3
325110	Petrochemical Manufacturing	--	--	0	0	--	--	0
213111	Drilling Oil and Gas Wells	-497	-495	-40	-220	-89	0	-148
213112	Support Activities for Oil and Gas Operations	-1,769	-1,851	-953	-652	-248	--	93
	Total	-3,096	-3,115	-2,020	-1,734	-260	102	817

Industry Breakdown - % Change

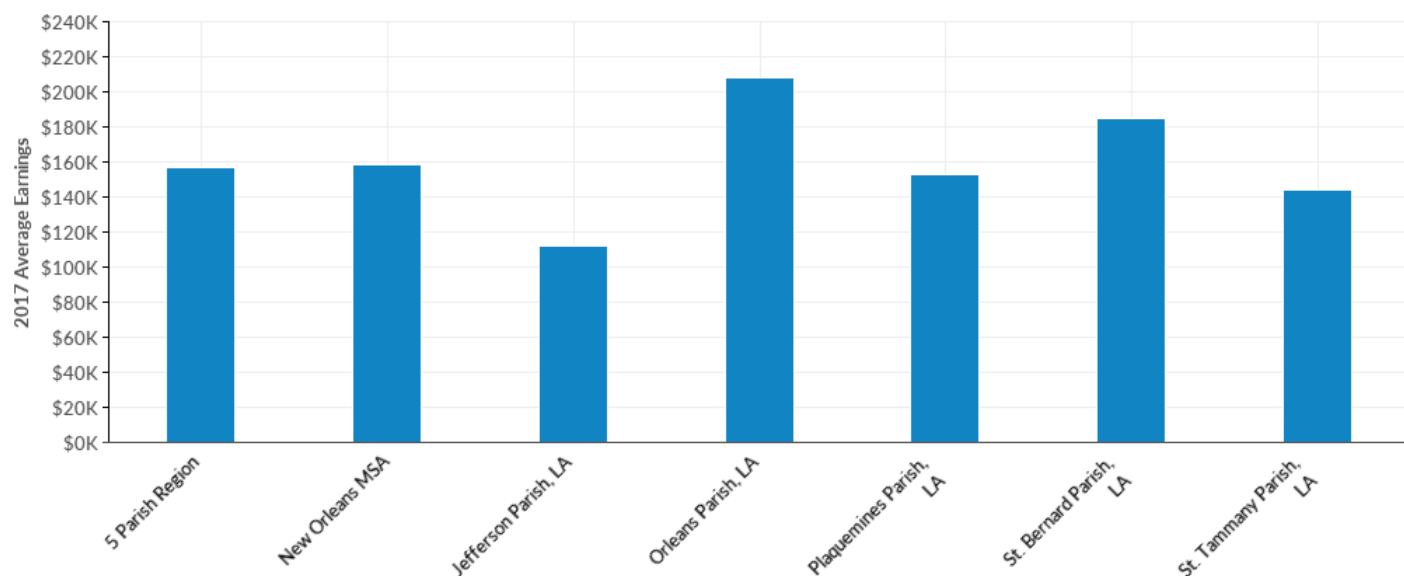


Industry	Description	5 Parish Region	New Orleans MSA	Jefferson Parish, LA	Orleans Parish, LA	Plaquemines Parish, LA	St. Bernard Parish, LA	St. Tammany Parish, LA
221112	Fossil Fuel Electric Power Generation	216%	144%	158%	--	0%	0%	0%
325180	Other Basic Inorganic Chemical Manufacturing	41%	23%	-83%	--	--	0%	-25%
211130	Natural Gas Extraction	30%	28%	-3%	-33%	125%	--	--
562212	Solid Waste Landfill	25%	54%	27%	0%	0%	0%	16%
486110	Pipeline Transportation of Crude Oil	21%	5%	-33%	0%	-100%	--	--
211120	Crude Petroleum Extraction	12%	12%	-19%	-40%	99%	--	1,795%
325312	Phosphatic Fertilizer Manufacturing	2%	2%	-2%	0%	0%	0%	--
324110	Petroleum Refineries	1%	-1%	--	-20%	0%	21%	-100%
325193	Ethyl Alcohol Manufacturing	0%	0%	0%	0%	0%	0%	0%
221117	Biomass Electric Power Generation	0%	0%	0%	0%	0%	0%	0%
212111	Bituminous Coal and Lignite Surface Mining	0%	0%	0%	0%	0%	0%	0%
486990	All Other Pipeline Transportation	0%	0%	0%	0%	0%	0%	0%
325199	All Other Basic Organic Chemical Manufacturing	--	-42%	--	0%	0%	0%	0%
	Total	-23%	-16%	-44%	-42%	-11%	11%	59%

Industry	Description	5 Parish Region	New Orleans MSA	Jefferson Parish, LA	Orleans Parish, LA	Plaquemines Parish, LA	St. Bernard Parish, LA	St. Tammany Parish, LA
325212	Synthetic Rubber Manufacturing	--	46%	0%	--	0%	0%	0%
221118	Other Electric Power Generation	0%	0%	0%	0%	0%	0%	0%
212291	Uranium-Radium-Vanadium Ore Mining	0%	0%	0%	0%	0%	0%	0%
212112	Bituminous Coal Underground Mining	0%	0%	0%	0%	0%	0%	0%
221113	Nuclear Electric Power Generation	0%	3%	0%	0%	0%	0%	0%
221114	Solar Electric Power Generation	0%	0%	0%	0%	0%	0%	0%
221116	Geothermal Electric Power Generation	0%	0%	0%	0%	0%	0%	0%
221115	Wind Electric Power Generation	0%	0%	0%	0%	0%	0%	0%
212299	All Other Metal Ore Mining	0%	0%	0%	0%	0%	0%	0%
212210	Iron Ore Mining	0%	0%	0%	0%	0%	0%	0%
212222	Silver Ore Mining	0%	0%	0%	0%	0%	0%	0%
212113	Anthracite Mining	0%	0%	0%	0%	0%	0%	0%
541360	Geophysical Surveying and Mapping Services	-7%	-7%	--	51%	0%	0%	13%
517311	Wired Telecommunications Carriers	-13%	-10%	-32%	33%	--	164%	17%
212230	Copper, Nickel, Lead, and Zinc Mining	-14%	-14%	0%	-14%	0%	0%	0%
562910	Remediation Services	-28%	-21%	-11%	-45%	-29%	15%	-42%
221121	Electric Bulk Power Transmission and Control	-29%	-26%	-75%	100%	0%	--	--
221122	Electric Power Distribution	-32%	-32%	-45%	-63%	67%	-55%	2%
221210	Natural Gas Distribution	-36%	-36%	-21%	-21%	-100%	--	-25%
454310	Fuel Dealers	-36%	-31%	--	-100%	0%	0%	--
324199	All Other Petroleum and Coal Products Manufacturing	-37%	-24%	--	0%	0%	-34%	0%
517911	Telecommunications Resellers	-46%	-46%	-62%	--	0%	0%	24%
	Total	-23%	-16%	-44%	-42%	-11%	11%	59%

Industry	Description	5 Parish Region	New Orleans MSA	Jefferson Parish, LA	Orleans Parish, LA	Plaquemines Parish, LA	St. Bernard Parish, LA	St. Tammany Parish, LA
486210	Pipeline Transportation of Natural Gas	-47%	-47%	-72%	0%	291%	--	--
221320	Sewage Treatment Facilities	-51%	-51%	-70%	--	0%	0%	-6%
213111	Drilling Oil and Gas Wells	-53%	-53%	-15%	-68%	-100%	0%	-57%
213112	Support Activities for Oil and Gas Operations	-60%	-54%	-80%	-76%	-38%	--	39%
325194	Cyclic Crude, Intermediate, and Gum and Wood Chemical Manufacturing	-68%	-68%	0%	0%	-100%	0%	--
325120	Industrial Gas Manufacturing	-75%	-11%	-91%	--	0%	0%	4%
486910	Pipeline Transportation of Refined Petroleum Products	--	--	0%	-100%	--	0%	0%
325320	Pesticide and Other Agricultural Chemical Manufacturing	--	8%	--	0%	0%	0%	0%
325110	Petrochemical Manufacturing	--	--	0%	0%	--	--	0%
213113	Support Activities for Coal Mining	-100%	-100%	-100%	0%	0%	0%	0%
212221	Gold Ore Mining	--	--	0%	--	0%	0%	0%
221111	Hydroelectric Power Generation	--	--	0%	--	0%	0%	0%
	Total	-23%	-16%	-44%	-42%	-11%	11%	59%

Industry Breakdown - 2017 Average Earnings

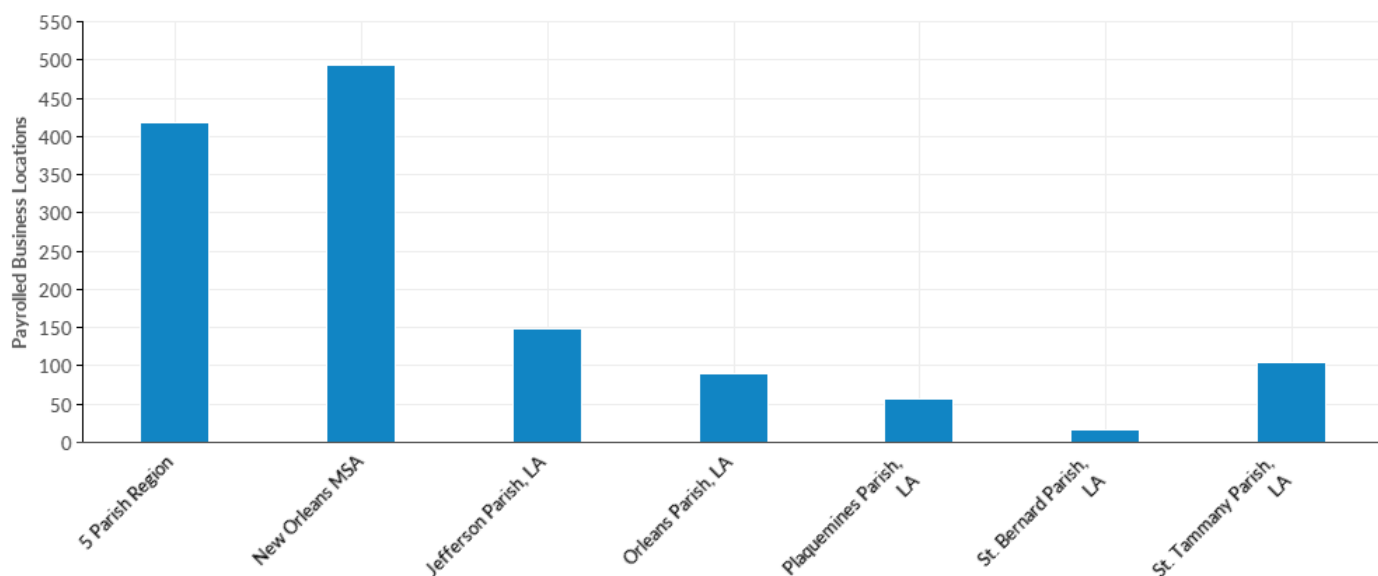


Industry	Description	5 Parish Region	New Orleans MSA	Jefferson Parish, LA	Orleans Parish, LA	Plaquemines Parish, LA	St. Bernard Parish, LA	St. Tammany Parish, LA
212230	Copper, Nickel, Lead, and Zinc Mining	\$259,013	\$259,013	\$0	\$259,013	\$0	\$0	\$0
211120	Crude Petroleum Extraction	\$230,748	\$230,780	\$141,035	\$299,209	\$162,536	--	\$235,161
211130	Natural Gas Extraction	\$199,959	\$200,108	\$143,697	\$238,626	\$136,293	--	\$225,637
324110	Petroleum Refineries	\$195,151	\$204,673	--	\$180,070	\$189,400	\$200,796	\$0
221122	Electric Power Distribution	\$174,636	\$163,856	\$155,860	\$147,818	\$381,226	\$45,266	\$117,796
325312	Phosphatic Fertilizer Manufacturing	\$172,982	\$172,982	\$173,544	\$0	\$0	\$0	--
221121	Electric Bulk Power Transmission and Control	\$149,696	\$158,839	\$138,813	\$154,221	\$0	\$0	--
221112	Fossil Fuel Electric Power Generation	\$148,675	\$177,909	\$150,121	\$142,426	\$0	\$0	\$0
486910	Pipeline Transportation of Refined Petroleum Products	--	--	\$0	\$0	--	\$0	\$0
221210	Natural Gas Distribution	\$145,370	\$138,391	\$84,469	\$224,888	\$0	--	\$100,822
325110	Petrochemical Manufacturing	--	--	\$0	\$0	--	--	\$0
	Total	\$156,641	\$158,249	\$111,684	\$207,756	\$152,669	\$185,000	\$144,046

Industry	Description	5 Parish Region	New Orleans MSA	Jefferson Parish, LA	Orleans Parish, LA	Plaquemines Parish, LA	St. Bernard Parish, LA	St. Tammany Parish, LA
213111	Drilling Oil and Gas Wells	\$136,589	\$135,934	\$143,704	\$145,353	\$0	\$0	\$113,171
324199	All Other Petroleum and Coal Products Manufacturing	\$130,155	\$131,883	\$0	\$0	\$0	\$130,155	\$0
325320	Pesticide and Other Agricultural Chemical Manufacturing	--	\$120,713	--	\$0	\$0	\$0	\$0
486210	Pipeline Transportation of Natural Gas	\$121,097	\$120,992	\$106,332	\$0	\$133,952	--	--
325180	Other Basic Inorganic Chemical Manufacturing	\$116,040	\$149,455	\$136,393	\$160,538	\$115,758	\$0	\$61,684
325212	Synthetic Rubber Manufacturing	\$113,224	\$152,608	\$0	\$113,224	\$0	\$0	\$0
325120	Industrial Gas Manufacturing	\$108,182	\$153,148	\$186,287	--	\$0	\$0	\$75,536
486110	Pipeline Transportation of Crude Oil	\$107,738	\$111,489	\$106,536	\$0	\$0	--	\$107,654
213112	Support Activities for Oil and Gas Operations	\$105,045	\$97,499	\$100,666	\$128,677	\$91,514	--	\$108,171
325199	All Other Basic Organic Chemical Manufacturing	\$103,667	\$127,195	\$103,667	\$0	\$0	\$0	\$0
517311	Wired Telecommunications Carriers	\$92,057	\$91,126	\$98,015	\$87,384	--	\$71,589	\$84,612
562212	Solid Waste Landfill	\$74,715	\$77,037	\$79,145	\$0	\$0	\$0	\$52,791
325194	Cyclic Crude, Intermediate, and Gum and Wood Chemical Manufacturing	\$74,131	\$74,131	\$0	\$0	\$0	\$0	\$74,131
517911	Telecommunications Resellers	\$73,912	\$73,912	\$76,998	--	\$0	\$0	\$74,276
562910	Remediation Services	\$66,221	\$60,884	\$52,978	\$69,115	\$80,379	\$69,461	\$52,851
541360	Geophysical Surveying and Mapping Services	\$55,226	\$55,226	--	\$30,556	\$0	\$0	\$100,068
221320	Sewage Treatment Facilities	\$52,546	\$52,546	\$39,335	--	\$0	\$0	\$60,763
	Total	\$156,641	\$158,249	\$111,684	\$207,756	\$152,669	\$185,000	\$144,046

Industry	Description	5 Parish Region	New Orleans MSA	Jefferson Parish, LA	Orleans Parish, LA	Plaquemines Parish, LA	St. Bernard Parish, LA	St. Tammany Parish, LA
454310	Fuel Dealers	\$45,170	\$43,505	\$45,351	\$0	\$0	\$0	--
212111	Bituminous Coal and Lignite Surface Mining	\$0	\$0	\$0	\$0	\$0	\$0	\$0
213113	Support Activities for Coal Mining	\$0	\$0	\$0	\$0	\$0	\$0	\$0
221111	Hydroelectric Power Generation	\$0	\$0	\$0	\$0	\$0	\$0	\$0
221117	Biomass Electric Power Generation	\$0	\$0	\$0	\$0	\$0	\$0	\$0
221118	Other Electric Power Generation	\$0	\$0	\$0	\$0	\$0	\$0	\$0
486990	All Other Pipeline Transportation	\$0	\$0	\$0	\$0	\$0	\$0	\$0
212221	Gold Ore Mining	\$0	\$0	\$0	\$0	\$0	\$0	\$0
325193	Ethyl Alcohol Manufacturing	\$0	\$0	\$0	\$0	\$0	\$0	\$0
221116	Geothermal Electric Power Generation	\$0	\$0	\$0	\$0	\$0	\$0	\$0
221115	Wind Electric Power Generation	\$0	\$0	\$0	\$0	\$0	\$0	\$0
212210	Iron Ore Mining	\$0	\$0	\$0	\$0	\$0	\$0	\$0
212113	Anthracite Mining	\$0	\$0	\$0	\$0	\$0	\$0	\$0
212112	Bituminous Coal Underground Mining	\$0	\$0	\$0	\$0	\$0	\$0	\$0
212222	Silver Ore Mining	\$0	\$0	\$0	\$0	\$0	\$0	\$0
212291	Uranium-Radium-Vanadium Ore Mining	\$0	\$0	\$0	\$0	\$0	\$0	\$0
221114	Solar Electric Power Generation	\$0	\$0	\$0	\$0	\$0	\$0	\$0
221113	Nuclear Electric Power Generation	\$0	\$145,548	\$0	\$0	\$0	\$0	\$0
212299	All Other Metal Ore Mining	\$0	\$0	\$0	\$0	\$0	\$0	\$0
	Total	\$156,641	\$158,249	\$111,684	\$207,756	\$152,669	\$185,000	\$144,046

Industry Breakdown - Payrolled Business Locations

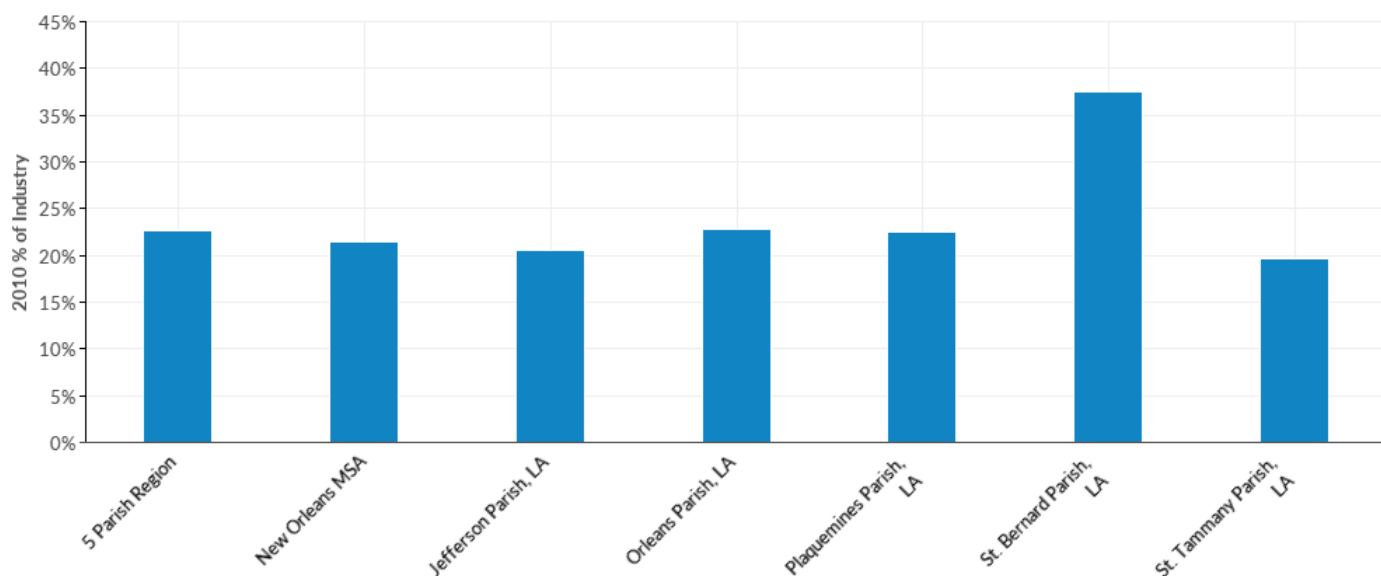


Industry	Description	5 Parish Region	New Orleans MSA	Jefferson Parish, LA	Orleans Parish, LA	Plaquemines Parish, LA	St. Bernard Parish, LA	St. Tammany Parish, LA
213112	Support Activities for Oil and Gas Operations	99	107	29	17	26	1	26
211120	Crude Petroleum Extraction	56	57	14	16	12	1	14
517311	Wired Telecommunications Carriers	55	60	27	11	1	1	16
562910	Remediation Services	42	46	13	11	8	2	8
221122	Electric Power Distribution	29	37	11	8	2	2	6
211130	Natural Gas Extraction	17	17	4	5	3	1	5
213111	Drilling Oil and Gas Wells	17	18	7	2	0	0	8
517911	Telecommunications Resellers	13	13	7	1	0	0	5
541360	Geophysical Surveying and Mapping Services	12	12	3	4	0	0	5
221121	Electric Bulk Power Transmission and Control	11	12	6	4	0	0	1
324110	Petroleum Refineries	9	17	3	1	1	4	0
221210	Natural Gas Distribution	8	9	2	3	0	1	2
486210	Pipeline Transportation of Natural Gas	7	9	2	0	2	2	1
325120	Industrial Gas Manufacturing	7	15	3	2	0	0	2
	Total	417	493	149	91	57	17	104

Industry	Description	5 Parish Region	New Orleans MSA	Jefferson Parish, LA	Orleans Parish, LA	Plaquemines Parish, LA	St. Bernard Parish, LA	St. Tammany Parish, LA
325180	Other Basic Inorganic Chemical Manufacturing	7	11	2	3	1	0	1
562212	Solid Waste Landfill	6	8	5	0	0	0	1
221112	Fossil Fuel Electric Power Generation	6	9	4	2	0	0	0
454310	Fuel Dealers	4	5	3	0	0	0	1
486110	Pipeline Transportation of Crude Oil	3	9	2	0	0	0	1
221320	Sewage Treatment Facilities	3	3	1	1	0	0	1
325312	Phosphatic Fertilizer Manufacturing	2	2	2	0	0	0	1
325110	Petrochemical Manufacturing	2	4	0	0	1	1	0
325199	All Other Basic Organic Chemical Manufacturing	1	2	1	0	0	0	0
325194	Cyclic Crude, Intermediate, and Gum and Wood Chemical Manufacturing	1	1	0	0	0	0	1
212230	Copper, Nickel, Lead, and Zinc Mining	1	1	0	1	0	0	0
324199	All Other Petroleum and Coal Products Manufacturing	1	2	0	0	0	1	0
325320	Pesticide and Other Agricultural Chemical Manufacturing	1	2	1	0	0	0	0
486910	Pipeline Transportation of Refined Petroleum Products	1	2	0	0	1	0	0
325212	Synthetic Rubber Manufacturing	1	4	0	1	0	0	0
213113	Support Activities for Coal Mining	0	0	0	0	0	0	0
221111	Hydroelectric Power Generation	0	0	0	0	0	0	0
221117	Biomass Electric Power Generation	0	0	0	0	0	0	0
221118	Other Electric Power Generation	0	0	0	0	0	0	0
	Total	417	493	149	91	57	17	104

Industry	Description	5 Parish Region	New Orleans MSA	Jefferson Parish, LA	Orleans Parish, LA	Plaquemines Parish, LA	St. Bernard Parish, LA	St. Tammany Parish, LA
486990	All Other Pipeline Transportation	0	0	0	0	0	0	0
212221	Gold Ore Mining	0	0	0	0	0	0	0
212112	Bituminous Coal Underground Mining	0	0	0	0	0	0	0
325193	Ethyl Alcohol Manufacturing	0	0	0	0	0	0	0
221115	Wind Electric Power Generation	0	0	0	0	0	0	0
221116	Geothermal Electric Power Generation	0	0	0	0	0	0	0
212291	Uranium-Radium-Vanadium Ore Mining	0	0	0	0	0	0	0
212210	Iron Ore Mining	0	0	0	0	0	0	0
212222	Silver Ore Mining	0	0	0	0	0	0	0
212299	All Other Metal Ore Mining	0	0	0	0	0	0	0
212111	Bituminous Coal and Lignite Surface Mining	0	0	0	0	0	0	0
221114	Solar Electric Power Generation	0	0	0	0	0	0	0
212113	Anthracite Mining	0	0	0	0	0	0	0
221113	Nuclear Electric Power Generation	0	2	0	0	0	0	0
	Total	417	493	149	91	57	17	104

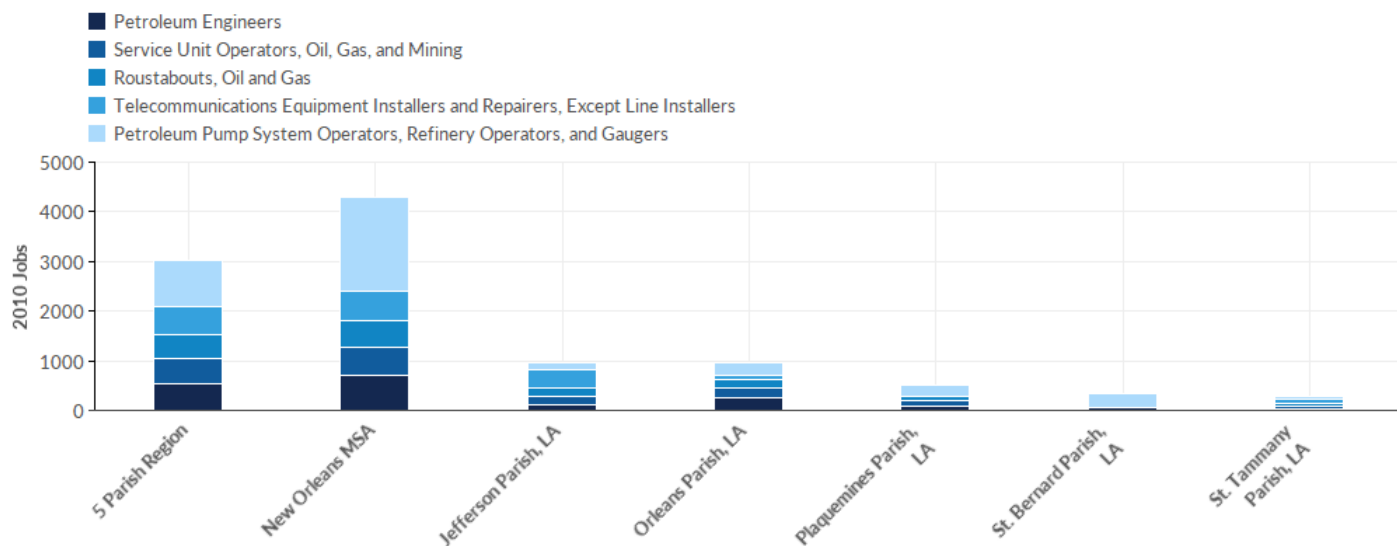
Top Occupations - 2010 % of Industry



SOC Code	Description	5 Parish Region	New Orleans MSA	Jefferson Parish, LA	Orleans Parish, LA	Plaquemines Parish, LA	St. Bernard Parish, LA	St. Tammany Parish, LA
51-8093	Petroleum Pump System Operators, Refinery Operators, and Gaugers	7%	10%	3%	6%	10%	31%	3%
49-2022	Telecommunications Equipment Installers and Repairers, Except Line Installers	4%	3%	8%	2%	0%	0%	7%
17-2171	Petroleum Engineers	4%	4%	2%	6%	4%	6%	2%
47-5013	Service Unit Operators, Oil, Gas, and Mining	4%	3%	4%	5%	4%	0%	4%
47-5071	Roustabouts, Oil and Gas	4%	3%	4%	4%	4%	0%	4%
	Total	23%	21%	21%	23%	23%	38%	20%

Source: QCEW Employees - Emsi 2017.4 Class of Worker

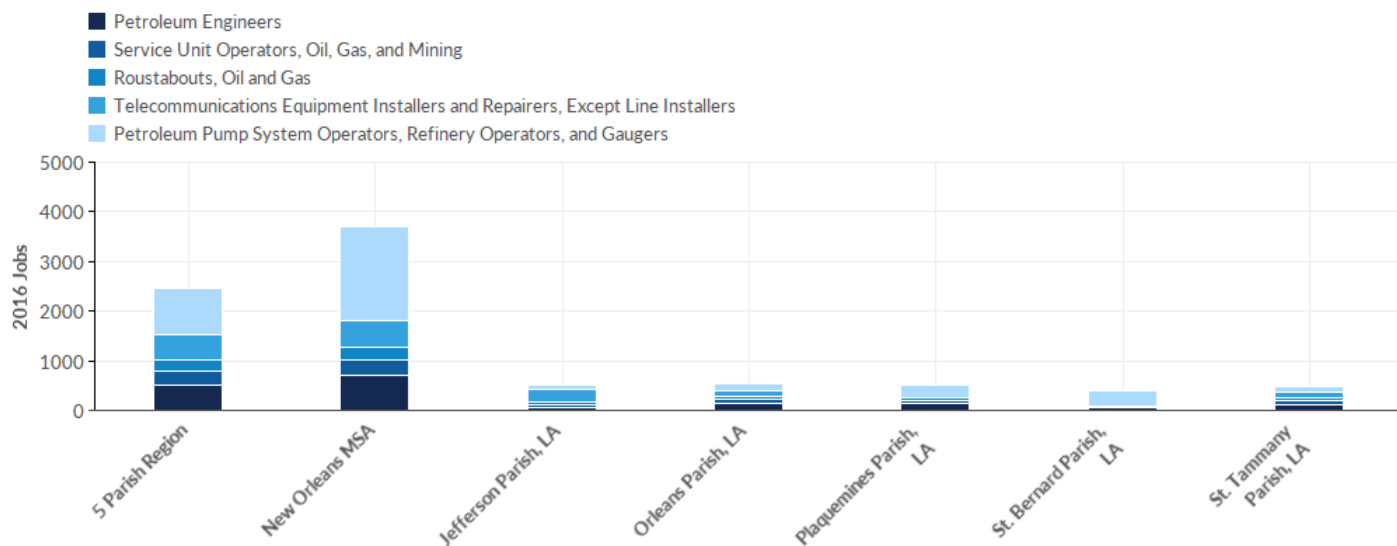
Top Occupations - 2010 Jobs



SOC Code	Description	5 Parish Region	New Orleans MSA	Jefferson Parish, LA	Orleans Parish, LA	Plaquemines Parish, LA	St. Bernard Parish, LA	St. Tammany Parish, LA
51-8093	Petroleum Pump System Operators, Refinery Operators, and Gaugers	945	1,916	123	255	237	287	44
49-2022	Telecommunications Equipment Installers and Repairers, Except Line Installers	558	576	377	80	<10	<10	95
17-2171	Petroleum Engineers	528	710	106	245	96	54	28
47-5013	Service Unit Operators, Oil, Gas, and Mining	517	567	172	199	92	<10	53
47-5071	Roustabouts, Oil and Gas	483	535	170	170	88	<10	54
	Total	3,032	4,304	947	949	516	347	273

Source: QCEW Employees - Emsi 2017.4 Class of Worker

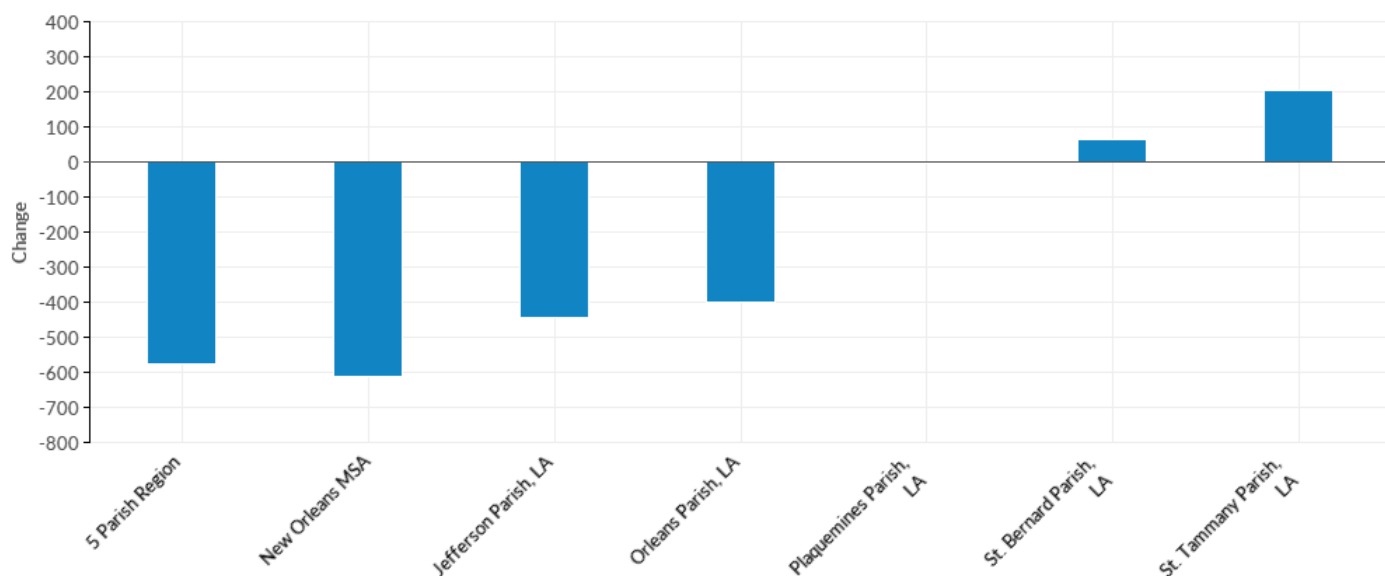
Top Occupations - 2016 Jobs



SOC Code	Description	5 Parish Region	New Orleans MSA	Jefferson Parish, LA	Orleans Parish, LA	Plaquemines Parish, LA	St. Bernard Parish, LA	St. Tammany Parish, LA
51-8093	Petroleum Pump System Operators, Refinery Operators, and Gaugers	932	1,883	67	165	254	338	109
17-2171	Petroleum Engineers	515	693	63	145	131	61	115
49-2022	Telecommunications Equipment Installers and Repairers, Except Line Installers	509	542	267	112	<10	10	119
47-5013	Service Unit Operators, Oil, Gas, and Mining	278	317	57	75	70	<10	76
47-5071	Roustabouts, Oil and Gas	221	259	50	55	56	<10	60
	Total	2,455	3,693	503	551	512	409	479

Source: QCEW Employees - Emsi 2017.4 Class of Worker

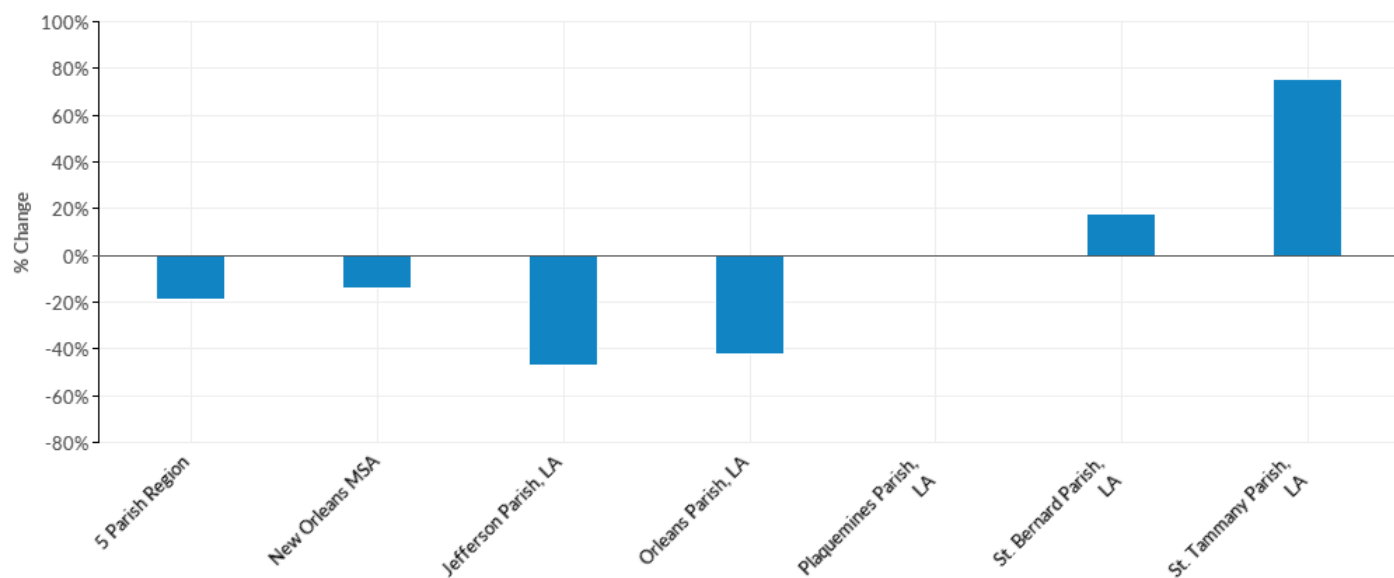
Top Occupations - Change



SOC Code	Description	5 Parish Region	New Orleans MSA	Jefferson Parish, LA	Orleans Parish, LA	Plaquemines Parish, LA	St. Bernard Parish, LA	St. Tammany Parish, LA
17-2171	Petroleum Engineers	-13	-17	-43	-100	35	7	87
51-8093	Petroleum Pump System Operators, Refinery Operators, and Gaugers	-13	-33	-56	-90	17	51	65
49-2022	Telecommunications Equipment Installers and Repairers, Except Line Installers	-49	-34	-110	32	--	--	24
47-5013	Service Unit Operators, Oil, Gas, and Mining	-239	-250	-115	-124	-22	--	23
47-5071	Roustabouts, Oil and Gas	-262	-276	-120	-115	-32	--	6
	Total	-577	-611	-444	-398	-4	62	206

Source: QCEW Employees - Emsi 2017.4 Class of Worker

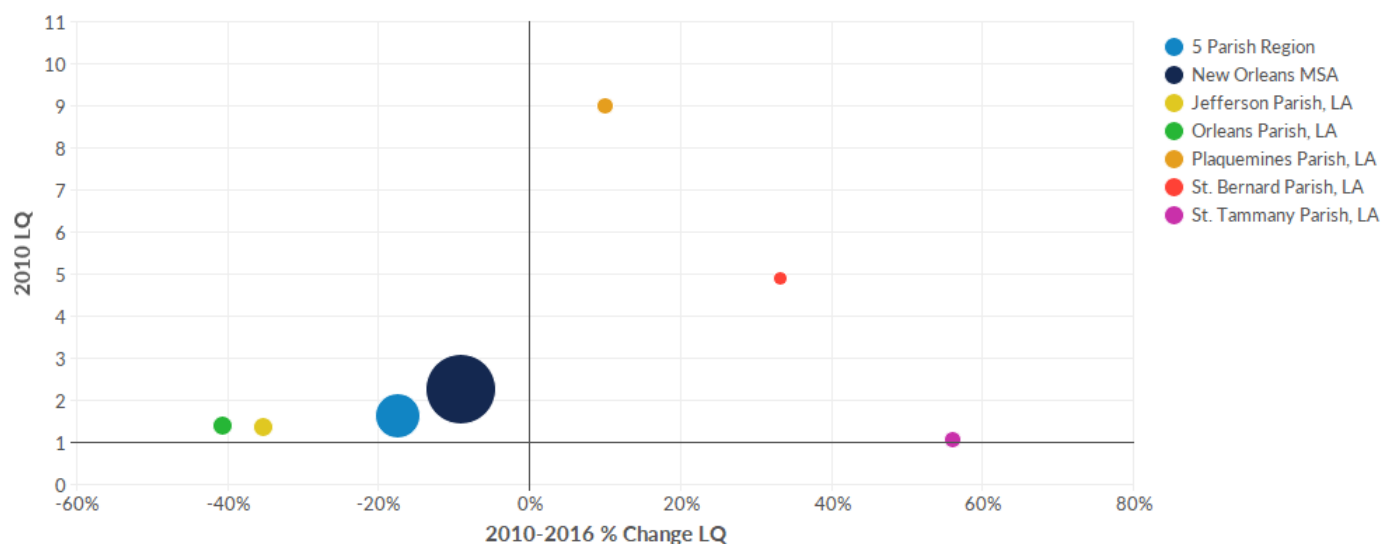
Top Occupations - % Change



SOC Code	Description	5 Parish Region	New Orleans MSA	Jefferson Parish, LA	Orleans Parish, LA	Plaquemines Parish, LA	St. Bernard Parish, LA	St. Tammany Parish, LA
51-8093	Petroleum Pump System Operators, Refinery Operators, and Gaugers	-1%	-2%	-46%	-35%	7%	18%	148%
17-2171	Petroleum Engineers	-2%	-2%	-41%	-41%	36%	13%	311%
49-2022	Telecommunications Equipment Installers and Repairers, Except Line Installers	-9%	-6%	-29%	40%	--	--	25%
47-5013	Service Unit Operators, Oil, Gas, and Mining	-46%	-44%	-67%	-62%	-24%	--	43%
47-5071	Roustabouts, Oil and Gas	-54%	-52%	-71%	-68%	-36%	--	11%
	Total	-19%	-14%	-47%	-42%	-1%	18%	75%

Source: QCEW Employees - Emsi 2017.4 Class of Worker

Location Quotient Breakdown - 2010 National LQ



*Bubble size represents 2010 jobs in each region.

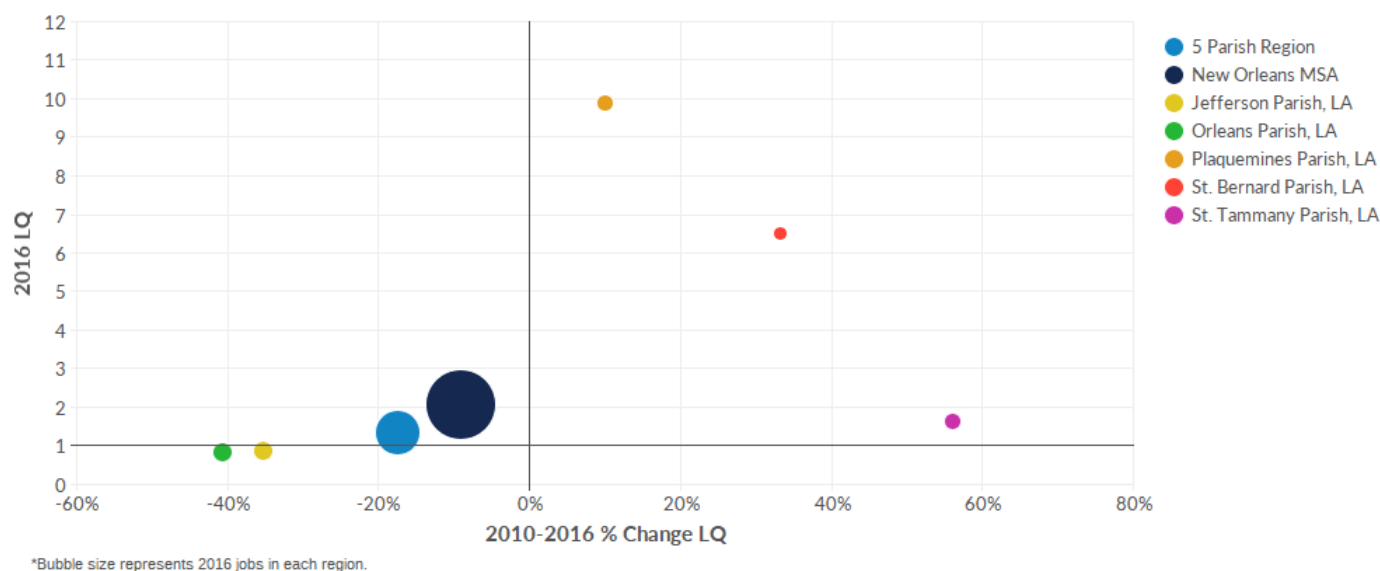
Industry	Description	5 Parish Region	New Orleans MSA	Jefferson Parish, LA	Orleans Parish, LA	Plaquemines Parish, LA	St. Bernard Parish, LA	St. Tammany Parish, LA
324110	Petroleum Refineries	5.71	13.52	0.24	2.26	56.13	119.94	1.54
211120	Crude Petroleum Extraction	5.30	4.91	1.77	10.12	24.29	0.20	0.53
325120	Industrial Gas Manufacturing	4.51	6.45	7.50	1.55	0.00	0.00	5.08
213112	Support Activities for Oil and Gas Operations	4.05	4.34	3.92	3.20	28.93	0.66	1.99
325110	Petrochemical Manufacturing	3.93	7.05	0.00	0.00	126.14	0.00	0.00
486110	Pipeline Transportation of Crude Oil	3.74	4.78	7.15	0.00	21.11	4.65	0.00
211130	Natural Gas Extraction	3.73	3.50	1.16	7.22	15.70	1.46	0.42
213111	Drilling Oil and Gas Wells	3.44	3.18	2.30	3.25	10.56	0.00	5.93
325194	Cyclic Crude, Intermediate, and Gum and Wood Chemical Manufacturing	3.09	2.85	0.00	0.00	97.14	0.00	0.39
324199	All Other Petroleum and Coal Products Manufacturing	2.37	3.76	0.22	0.00	0.00	98.47	0.00
213113	Support Activities for Coal Mining	2.29	2.12	5.50	0.00	0.00	0.00	0.00
221320	Sewage Treatment Facilities	2.28	2.10	3.91	0.00	0.00	0.00	4.00
325312	Phosphatic Fertilizer Manufacturing	2.21	2.04	5.31	0.00	0.00	0.00	0.00
562910	Remediation Services	2.00	2.11	1.00	1.17	22.14	6.20	1.97
	Total	1.64	2.27	1.36	1.39	9.01	4.90	1.05

Industry	Description	5 Parish Region	New Orleans MSA	Jefferson Parish, LA	Orleans Parish, LA	Plaquemines Parish, LA	St. Bernard Parish, LA	St. Tammany Parish, LA
562212	Solid Waste Landfill	1.89	1.93	3.78	0.00	0.00	0.00	1.94
541360	Geophysical Surveying and Mapping Services	1.82	1.69	1.59	1.65	0.00	0.00	3.45
486910	Pipeline Transportation of Refined Petroleum Products	1.47	1.36	0.00	2.92	12.83	0.00	0.00
486210	Pipeline Transportation of Natural Gas	1.44	1.33	2.14	0.00	3.80	6.62	1.71
212230	Copper, Nickel, Lead, and Zinc Mining	1.04	0.96	0.00	2.82	0.00	0.00	0.00
221122	Electric Power Distribution	0.97	1.05	1.14	0.51	2.02	1.97	1.26
221121	Electric Bulk Power Transmission and Control	0.84	0.82	1.44	0.58	0.00	0.97	0.00
517311	Wired Telecommunications Carriers	0.75	0.72	1.21	0.30	0.08	0.21	0.79
325320	Pesticide and Other Agricultural Chemical Manufacturing	0.72	11.85	1.72	0.00	0.00	0.00	0.00
221210	Natural Gas Distribution	0.63	0.67	0.46	0.55	1.76	3.03	0.68
325180	Other Basic Inorganic Chemical Manufacturing	0.59	6.78	1.09	0.01	0.00	0.00	0.85
517911	Telecommunications Resellers	0.43	0.39	0.80	0.05	0.00	0.00	0.47
221111	Hydroelectric Power Generation	0.27	0.25	0.00	0.74	0.00	0.00	0.00
454310	Fuel Dealers	0.15	0.24	0.03	0.29	0.00	0.00	0.18
221112	Fossil Fuel Electric Power Generation	0.14	0.23	0.33	0.00	0.00	0.00	0.00
212221	Gold Ore Mining	0.02	0.02	0.00	0.06	0.00	0.00	0.00
221115	Wind Electric Power Generation	0.00	0.00	0.00	0.00	0.00	0.00	0.00
221116	Geothermal Electric Power Generation	0.00	0.00	0.00	0.00	0.00	0.00	0.00
221117	Biomass Electric Power Generation	0.00	0.00	0.00	0.00	0.00	0.00	0.00
325199	All Other Basic Organic Chemical Manufacturing	0.00	2.84	0.00	0.00	0.00	0.00	0.00
	Total	1.64	2.27	1.36	1.39	9.01	4.90	1.05

Industry	Description	5 Parish Region	New Orleans MSA	Jefferson Parish, LA	Orleans Parish, LA	Plaquemines Parish, LA	St. Bernard Parish, LA	St. Tammany Parish, LA
486990	All Other Pipeline Transportation	0.00	0.00	0.00	0.00	0.00	0.00	0.00
325193	Ethyl Alcohol Manufacturing	0.00	0.00	0.00	0.00	0.00	0.00	0.00
221118	Other Electric Power Generation	0.00	0.00	0.00	0.00	0.00	0.00	0.00
221114	Solar Electric Power Generation	0.00	0.00	0.00	0.00	0.00	0.00	0.00
221113	Nuclear Electric Power Generation	0.00	3.15	0.00	0.00	0.00	0.00	0.00
212112	Bituminous Coal Underground Mining	0.00	0.00	0.00	0.00	0.00	0.00	0.00
212111	Bituminous Coal and Lignite Surface Mining	0.00	0.00	0.00	0.00	0.00	0.00	0.00
325212	Synthetic Rubber Manufacturing	0.00	6.31	0.00	0.00	0.00	0.00	0.00
212113	Anthracite Mining	0.00	0.00	0.00	0.00	0.00	0.00	0.00
212210	Iron Ore Mining	0.00	0.00	0.00	0.00	0.00	0.00	0.00
212299	All Other Metal Ore Mining	0.00	0.00	0.00	0.00	0.00	0.00	0.00
212291	Uranium-Radium-Vanadium Ore Mining	0.00	0.00	0.00	0.00	0.00	0.00	0.00
212222	Silver Ore Mining	0.00	0.00	0.00	0.00	0.00	0.00	0.00
	Total	1.64	2.27	1.36	1.39	9.01	4.90	1.05

Source: QCEW Employees - Emsi 2017.4 Class of Worker

Location Quotient Breakdown - 2016 National LQ



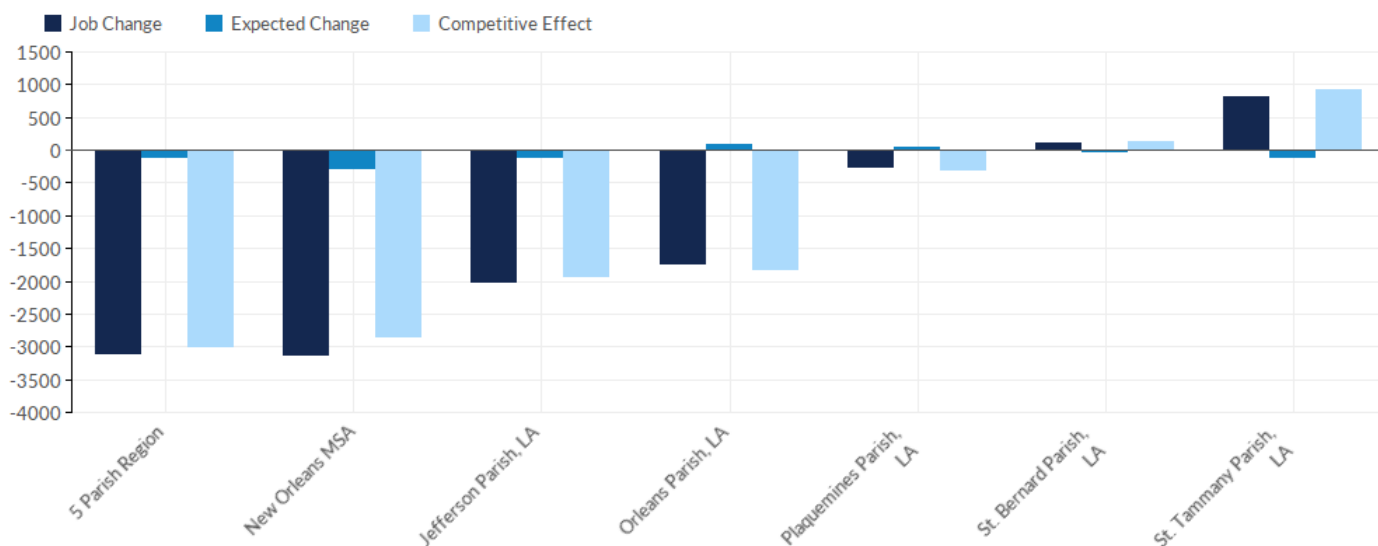
Industry	Description	5 Parish Region	New Orleans MSA	Jefferson Parish, LA	Orleans Parish, LA	Plaquemines Parish, LA	St. Bernard Parish, LA	St. Tammany Parish, LA
324110	Petroleum Refineries	6.26	14.60	0.05	1.85	70.04	175.34	0.00
211120	Crude Petroleum Extraction	5.62	5.22	1.45	5.41	52.71	0.10	8.71
211130	Natural Gas Extraction	4.38	4.07	1.09	4.16	37.36	0.66	7.47
486110	Pipeline Transportation of Crude Oil	3.69	4.13	4.14	0.00	0.00	11.17	10.51
213111	Drilling Oil and Gas Wells	2.71	2.52	3.54	1.65	0.00	0.00	3.95
325312	Phosphatic Fertilizer Manufacturing	2.53	2.35	6.37	0.00	0.00	0.00	0.34
562212	Solid Waste Landfill	2.39	3.03	5.20	0.00	0.00	0.00	2.09
541360	Geophysical Surveying and Mapping Services	1.91	1.77	0.45	2.67	0.00	0.00	3.97
213112	Support Activities for Oil and Gas Operations	1.67	2.07	0.87	0.75	21.44	0.12	2.62
325212	Synthetic Rubber Manufacturing	1.62	10.32	0.00	4.18	0.00	0.00	0.00
324199	All Other Petroleum and Coal Products Manufacturing	1.61	3.05	0.00	0.00	0.00	77.77	0.00
221320	Sewage Treatment Facilities	1.41	1.30	1.56	0.10	0.00	0.00	4.31
562910	Remediation Services	1.41	1.63	0.92	0.60	17.67	7.82	1.01
325120	Industrial Gas Manufacturing	1.09	5.47	0.66	0.06	0.00	0.00	4.58
	Total	1.35	2.06	0.88	0.82	9.91	6.52	1.64

Industry	Description	5 Parish Region	New Orleans MSA	Jefferson Parish, LA	Orleans Parish, LA	Plaquemines Parish, LA	St. Bernard Parish, LA	St. Tammany Parish, LA
325194	Cyclic Crude, Intermediate, and Gum and Wood Chemical Manufacturing	1.08	1.00	0.00	0.00	0.00	0.00	6.11
325180	Other Basic Inorganic Chemical Manufacturing	0.88	8.81	0.22	0.21	22.63	0.00	0.61
212230	Copper, Nickel, Lead, and Zinc Mining	0.79	0.73	0.00	2.03	0.00	0.00	0.00
486210	Pipeline Transportation of Natural Gas	0.72	0.67	0.62	0.00	15.69	2.63	0.04
517311	Wired Telecommunications Carriers	0.68	0.67	0.93	0.39	0.09	0.67	0.88
221122	Electric Power Distribution	0.67	0.72	0.67	0.18	3.92	0.98	1.19
221121	Electric Bulk Power Transmission and Control	0.56	0.59	0.37	1.07	0.00	0.00	0.04
221112	Fossil Fuel Electric Power Generation	0.49	0.62	1.01	0.25	0.00	0.00	0.00
517911	Telecommunications Resellers	0.42	0.39	0.60	0.05	0.00	0.00	0.98
221210	Natural Gas Distribution	0.40	0.43	0.38	0.41	0.00	0.53	0.47
486910	Pipeline Transportation of Refined Petroleum Products	0.30	0.31	0.00	0.00	10.98	0.00	0.00
325199	All Other Basic Organic Chemical Manufacturing	0.28	1.50	0.73	0.00	0.00	0.00	0.00
454310	Fuel Dealers	0.11	0.18	0.21	0.00	0.00	0.00	0.14
325110	Petrochemical Manufacturing	0.04	0.04	0.00	0.00	0.73	0.85	0.00
325320	Pesticide and Other Agricultural Chemical Manufacturing	0.02	14.29	0.04	0.00	0.00	0.00	0.00
213113	Support Activities for Coal Mining	0.00	0.00	0.00	0.00	0.00	0.00	0.00
221111	Hydroelectric Power Generation	0.00	0.00	0.00	0.00	0.00	0.00	0.00
221116	Geothermal Electric Power Generation	0.00	0.00	0.00	0.00	0.00	0.00	0.00
221117	Biomass Electric Power Generation	0.00	0.00	0.00	0.00	0.00	0.00	0.00
221118	Other Electric Power Generation	0.00	0.00	0.00	0.00	0.00	0.00	0.00
	Total	1.35	2.06	0.88	0.82	9.91	6.52	1.64

Industry	Description	5 Parish Region	New Orleans MSA	Jefferson Parish, LA	Orleans Parish, LA	Plaquemines Parish, LA	St. Bernard Parish, LA	St. Tammany Parish, LA
486990	All Other Pipeline Transportation	0.00	0.00	0.00	0.00	0.00	0.00	0.00
212221	Gold Ore Mining	0.00	0.00	0.00	0.00	0.00	0.00	0.00
325193	Ethyl Alcohol Manufacturing	0.00	0.00	0.00	0.00	0.00	0.00	0.00
221115	Wind Electric Power Generation	0.00	0.00	0.00	0.00	0.00	0.00	0.00
221114	Solar Electric Power Generation	0.00	0.00	0.00	0.00	0.00	0.00	0.00
212113	Anthracite Mining	0.00	0.00	0.00	0.00	0.00	0.00	0.00
212112	Bituminous Coal Underground Mining	0.00	0.00	0.00	0.00	0.00	0.00	0.00
212111	Bituminous Coal and Lignite Surface Mining	0.00	0.00	0.00	0.00	0.00	0.00	0.00
212210	Iron Ore Mining	0.00	0.00	0.00	0.00	0.00	0.00	0.00
212222	Silver Ore Mining	0.00	0.00	0.00	0.00	0.00	0.00	0.00
221113	Nuclear Electric Power Generation	0.00	3.82	0.00	0.00	0.00	0.00	0.00
212299	All Other Metal Ore Mining	0.00	0.00	0.00	0.00	0.00	0.00	0.00
212291	Uranium-Radium-Vanadium Ore Mining	0.00	0.00	0.00	0.00	0.00	0.00	0.00
	Total	1.35	2.06	0.88	0.82	9.91	6.52	1.64

Source: QCEW Employees - Emsi 2017.4 Class of Worker

Shift Share Breakdown - Job Change



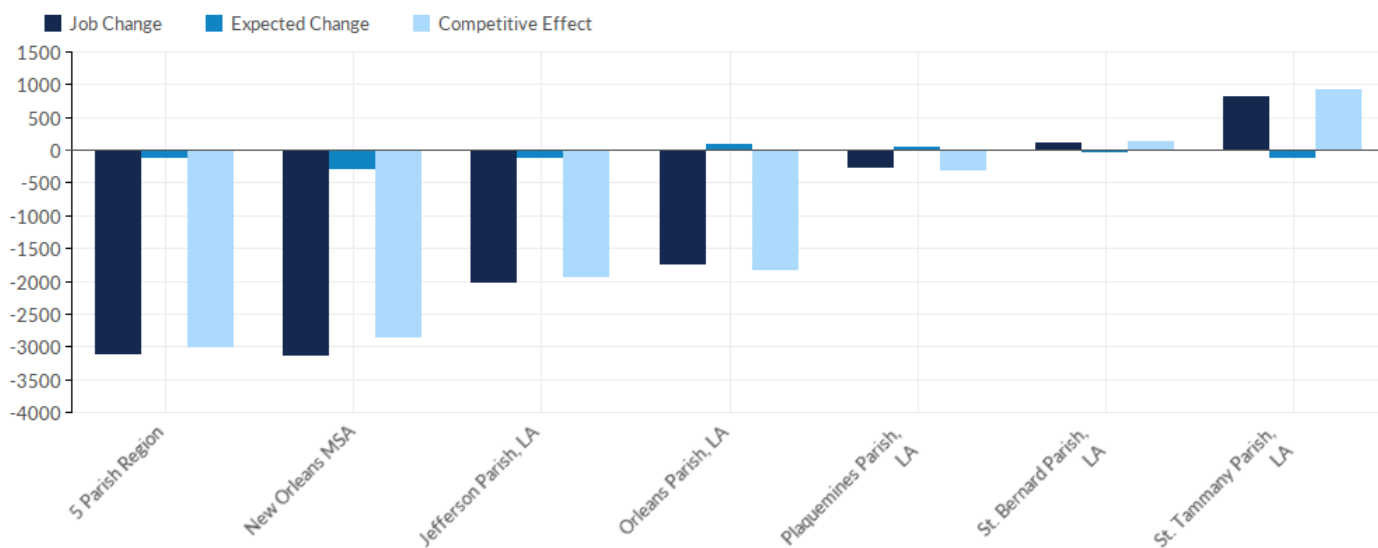
Industry	Description	5 Parish Region	New Orleans MSA	Jefferson Parish, LA	Orleans Parish, LA	Plaquemines Parish, LA	St. Bernard Parish, LA	St. Tammany Parish, LA
211120	Crude Petroleum Extraction	282	281	-59	-644	322	-1	664
211130	Natural Gas Extraction	160	154	-2	-126	90	-3	200
221112	Fossil Fuel Electric Power Generation	110	131	78	32	0	0	0
562212	Solid Waste Landfill	64	155	57	0	0	0	7
325212	Synthetic Rubber Manufacturing	57	123	0	57	0	0	0
325199	All Other Basic Organic Chemical Manufacturing	38	-153	38	0	0	0	0
325180	Other Basic Inorganic Chemical Manufacturing	35	238	-54	11	83	0	-5
486110	Pipeline Transportation of Crude Oil	25	9	-32	0	-21	6	73
324110	Petroleum Refineries	18	-29	-21	-44	-2	151	-66
325312	Phosphatic Fertilizer Manufacturing	0	0	-1	0	0	0	1
212112	Bituminous Coal Underground Mining	0	0	0	0	0	0	0
212113	Anthracite Mining	0	0	0	0	0	0	0
212111	Bituminous Coal and Lignite Surface Mining	0	0	0	0	0	0	0
	Total	-3,096	-3,115	-2,020	-1,734	-261	102	817

Industry	Description	5 Parish Region	New Orleans MSA	Jefferson Parish, LA	Orleans Parish, LA	Plaquemines Parish, LA	St. Bernard Parish, LA	St. Tammany Parish, LA
212210	Iron Ore Mining	0	0	0	0	0	0	0
221116	Geothermal Electric Power Generation	0	0	0	0	0	0	0
221115	Wind Electric Power Generation	0	0	0	0	0	0	0
221117	Biomass Electric Power Generation	0	0	0	0	0	0	0
221118	Other Electric Power Generation	0	0	0	0	0	0	0
486990	All Other Pipeline Transportation	0	0	0	0	0	0	0
325193	Ethyl Alcohol Manufacturing	0	0	0	0	0	0	0
221114	Solar Electric Power Generation	0	0	0	0	0	0	0
221113	Nuclear Electric Power Generation	0	19	0	0	0	0	0
212291	Uranium-Radium-Vanadium Ore Mining	0	0	0	0	0	0	0
212222	Silver Ore Mining	0	0	0	0	0	0	0
212299	All Other Metal Ore Mining	0	0	0	0	0	0	0
212221	Gold Ore Mining	-1	-1	0	-1	0	0	0
541360	Geophysical Surveying and Mapping Services	-7	-7	-29	18	0	0	4
221111	Hydroelectric Power Generation	-7	-7	0	-7	0	0	0
212230	Copper, Nickel, Lead, and Zinc Mining	-7	-7	0	-7	0	0	0
454310	Fuel Dealers	-16	-24	17	-32	0	0	-2
324199	All Other Petroleum and Coal Products Manufacturing	-16	-19	-2	0	0	-15	0
221121	Electric Bulk Power Transmission and Control	-21	-20	-39	19	0	-2	1
325194	Cyclic Crude, Intermediate, and Gum and Wood Chemical Manufacturing	-25	-25	0	0	-36	0	11
	Total	-3,096	-3,115	-2,020	-1,734	-261	102	817

Industry	Description	5 Parish Region	New Orleans MSA	Jefferson Parish, LA	Orleans Parish, LA	Plaquemines Parish, LA	St. Bernard Parish, LA	St. Tammany Parish, LA
486910	Pipeline Transportation of Refined Petroleum Products	-25	-24	0	-24	-1	0	0
221320	Sewage Treatment Facilities	-30	-30	-30	1	0	0	-1
325320	Pesticide and Other Agricultural Chemical Manufacturing	-35	55	-35	0	0	0	0
517911	Telecommunications Resellers	-65	-65	-69	-2	0	0	6
486210	Pipeline Transportation of Natural Gas	-66	-65	-62	0	32	-9	-26
213113	Support Activities for Coal Mining	-67	-67	-67	0	0	0	0
221210	Natural Gas Distribution	-90	-103	-17	-17	-22	-23	-11
562910	Remediation Services	-153	-133	-14	-53	-55	6	-37
517311	Wired Telecommunications Carriers	-208	-172	-349	78	-1	18	46
325120	Industrial Gas Manufacturing	-211	-50	-178	-34	0	0	2
221122	Electric Power Distribution	-226	-267	-156	-87	31	-19	4
325110	Petrochemical Manufacturing	-342	-667	0	0	-344	2	0
213111	Drilling Oil and Gas Wells	-496	-495	-39	-220	-89	0	-148
213112	Support Activities for Oil and Gas Operations	-1,770	-1,851	-953	-652	-248	-9	93
	Total	-3,096	-3,115	-2,020	-1,734	-261	102	817

Source: QCEW Employees - Emsi 2017.4 Class of Worker

Shift Share Breakdown - Expected Change



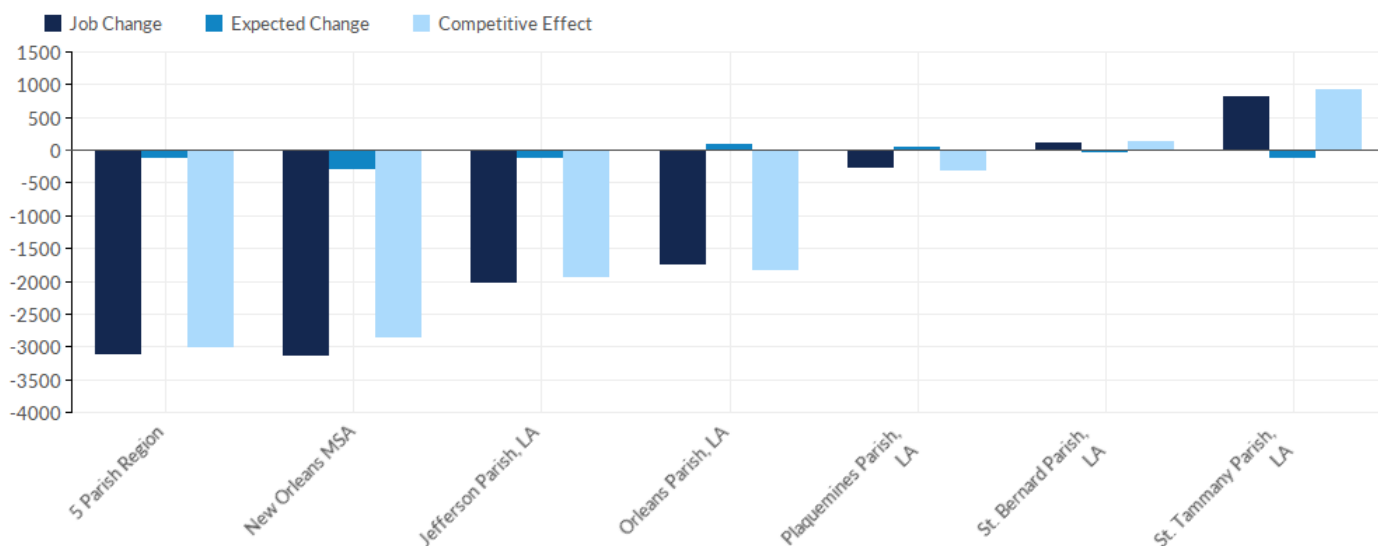
Industry	Description	5 Parish Region	New Orleans MSA	Jefferson Parish, LA	Orleans Parish, LA	Plaquemines Parish, LA	St. Bernard Parish, LA	St. Tammany Parish, LA
211120	Crude Petroleum Extraction	211	212	29	148	30	0	3
211130	Natural Gas Extraction	75	76	10	53	10	1	1
562910	Remediation Services	33	38	7	7	12	2	5
486110	Pipeline Transportation of Crude Oil	32	44	25	0	6	1	0
325110	Petrochemical Manufacturing	30	59	0	0	30	0	0
325120	Industrial Gas Manufacturing	23	35	16	3	0	0	4
221122	Electric Power Distribution	19	22	9	4	1	1	4
486210	Pipeline Transportation of Natural Gas	12	12	7	0	1	1	2
486910	Pipeline Transportation of Refined Petroleum Products	10	10	0	7	3	0	0
213112	Support Activities for Oil and Gas Operations	9	11	4	3	2	0	1
221210	Natural Gas Distribution	8	9	3	3	1	1	1
212230	Copper, Nickel, Lead, and Zinc Mining	8	8	0	8	0	0	0
221121	Electric Bulk Power Transmission and Control	6	7	4	2	0	0	0
562212	Solid Waste Landfill	4	5	4	0	0	0	1
	Total	-105	-270	-97	89	36	-29	-103

Industry	Description	5 Parish Region	New Orleans MSA	Jefferson Parish, LA	Orleans Parish, LA	Plaquemines Parish, LA	St. Bernard Parish, LA	St. Tammany Parish, LA
325199	All Other Basic Organic Chemical Manufacturing	0	54	0	0	0	0	0
212221	Gold Ore Mining	0	0	0	0	0	0	0
221117	Biomass Electric Power Generation	0	0	0	0	0	0	0
221115	Wind Electric Power Generation	0	0	0	0	0	0	0
486990	All Other Pipeline Transportation	0	0	0	0	0	0	0
212111	Bituminous Coal and Lignite Surface Mining	0	0	0	0	0	0	0
221116	Geothermal Electric Power Generation	0	0	0	0	0	0	0
221118	Other Electric Power Generation	0	0	0	0	0	0	0
325193	Ethyl Alcohol Manufacturing	0	0	0	0	0	0	0
221114	Solar Electric Power Generation	0	0	0	0	0	0	0
221113	Nuclear Electric Power Generation	0	-80	0	0	0	0	0
212113	Anthracite Mining	0	0	0	0	0	0	0
212112	Bituminous Coal Underground Mining	0	0	0	0	0	0	0
212210	Iron Ore Mining	0	0	0	0	0	0	0
212222	Silver Ore Mining	0	0	0	0	0	0	0
212299	All Other Metal Ore Mining	0	0	0	0	0	0	0
212291	Uranium-Radium-Vanadium Ore Mining	0	0	0	0	0	0	0
325212	Synthetic Rubber Manufacturing	0	-20	0	0	0	0	0
221111	Hydroelectric Power Generation	-1	-1	0	-1	0	0	0
324199	All Other Petroleum and Coal Products Manufacturing	-1	-2	0	0	0	-1	0
	Total	-105	-270	-97	89	36	-29	-103

Industry	Description	5 Parish Region	New Orleans MSA	Jefferson Parish, LA	Orleans Parish, LA	Plaquemines Parish, LA	St. Bernard Parish, LA	St. Tammany Parish, LA
325194	Cyclic Crude, Intermediate, and Gum and Wood Chemical Manufacturing	-1	-1	0	0	-1	0	0
325180	Other Basic Inorganic Chemical Manufacturing	-2	-24	-1	0	0	0	0
325320	Pesticide and Other Agricultural Chemical Manufacturing	-2	-44	-2	0	0	0	0
454310	Fuel Dealers	-3	-6	0	-2	0	0	-1
221112	Fossil Fuel Electric Power Generation	-4	-7	-4	0	0	0	0
325312	Phosphatic Fertilizer Manufacturing	-5	-5	-5	0	0	0	0
541360	Geophysical Surveying and Mapping Services	-8	-8	-3	-3	0	0	-3
221320	Sewage Treatment Facilities	-10	-10	-7	0	0	0	-3
517311	Wired Telecommunications Carriers	-24	-25	-16	-4	0	0	-4
213113	Support Activities for Coal Mining	-25	-25	-25	0	0	0	0
517911	Telecommunications Resellers	-63	-63	-49	-3	0	0	-11
324110	Petroleum Refineries	-73	-188	-1	-11	-22	-36	-3
213111	Drilling Oil and Gas Wells	-363	-363	-101	-126	-35	0	-101
	Total	-105	-270	-97	89	36	-29	-103

Source: QCEW Employees - Emsi 2017.4 Class of Worker

Shift Share Breakdown - Competitive Effect



Industry	Description	5 Parish Region	New Orleans MSA	Jefferson Parish, LA	Orleans Parish, LA	Plaquemines Parish, LA	St. Bernard Parish, LA	St. Tammany Parish, LA
221112	Fossil Fuel Electric Power Generation	114	138	82	32	0	0	0
324110	Petroleum Refineries	91	159	-20	-34	21	186	-63
211130	Natural Gas Extraction	85	77	-12	-179	80	-3	199
211120	Crude Petroleum Extraction	71	69	-89	-792	292	-1	661
562212	Solid Waste Landfill	60	150	53	0	0	0	6
325212	Synthetic Rubber Manufacturing	57	144	0	57	0	0	0
325199	All Other Basic Organic Chemical Manufacturing	37	-206	37	0	0	0	0
325180	Other Basic Inorganic Chemical Manufacturing	37	262	-52	11	83	0	-5
325312	Phosphatic Fertilizer Manufacturing	6	6	4	0	0	0	1
541360	Geophysical Surveying and Mapping Services	1	1	-26	21	0	0	6
212113	Anthracite Mining	0	0	0	0	0	0	0
212112	Bituminous Coal Underground Mining	0	0	0	0	0	0	0
212111	Bituminous Coal and Lignite Surface Mining	0	0	0	0	0	0	0
	Total	-2,991	-2,844	-1,923	-1,823	-297	131	920

Industry	Description	5 Parish Region	New Orleans MSA	Jefferson Parish, LA	Orleans Parish, LA	Plaquemines Parish, LA	St. Bernard Parish, LA	St. Tammany Parish, LA
212210	Iron Ore Mining	0	0	0	0	0	0	0
221116	Geothermal Electric Power Generation	0	0	0	0	0	0	0
221117	Biomass Electric Power Generation	0	0	0	0	0	0	0
221118	Other Electric Power Generation	0	0	0	0	0	0	0
486990	All Other Pipeline Transportation	0	0	0	0	0	0	0
325193	Ethyl Alcohol Manufacturing	0	0	0	0	0	0	0
221115	Wind Electric Power Generation	0	0	0	0	0	0	0
212299	All Other Metal Ore Mining	0	0	0	0	0	0	0
212291	Uranium-Radium-Vanadium Ore Mining	0	0	0	0	0	0	0
212222	Silver Ore Mining	0	0	0	0	0	0	0
221113	Nuclear Electric Power Generation	0	99	0	0	0	0	0
221114	Solar Electric Power Generation	0	0	0	0	0	0	0
212221	Gold Ore Mining	-1	-1	0	-1	0	0	0
517911	Telecommunications Resellers	-3	-3	-20	0	0	0	17
221111	Hydroelectric Power Generation	-6	-6	0	-6	0	0	0
486110	Pipeline Transportation of Crude Oil	-7	-35	-58	0	-27	5	73
454310	Fuel Dealers	-13	-18	18	-29	0	0	-1
324199	All Other Petroleum and Coal Products Manufacturing	-15	-17	-2	0	0	-13	0
212230	Copper, Nickel, Lead, and Zinc Mining	-15	-15	0	-15	0	0	0
221320	Sewage Treatment Facilities	-20	-20	-23	1	0	0	2
325194	Cyclic Crude, Intermediate, and Gum and Wood Chemical Manufacturing	-23	-23	0	0	-35	0	11
	Total	-2,991	-2,844	-1,923	-1,823	-297	131	920

Industry	Description	5 Parish Region	New Orleans MSA	Jefferson Parish, LA	Orleans Parish, LA	Plaquemines Parish, LA	St. Bernard Parish, LA	St. Tammany Parish, LA
221121	Electric Bulk Power Transmission and Control	-28	-26	-44	18	0	-2	1
325320	Pesticide and Other Agricultural Chemical Manufacturing	-32	99	-32	0	0	0	0
486910	Pipeline Transportation of Refined Petroleum Products	-35	-34	0	-31	-3	0	0
213113	Support Activities for Coal Mining	-43	-43	-43	0	0	0	0
486210	Pipeline Transportation of Natural Gas	-78	-77	-69	0	31	-11	-28
221210	Natural Gas Distribution	-98	-112	-19	-20	-22	-24	-12
213111	Drilling Oil and Gas Wells	-133	-131	62	-94	-54	0	-46
517311	Wired Telecommunications Carriers	-184	-147	-333	81	0	18	50
562910	Remediation Services	-186	-171	-21	-61	-67	4	-42
325120	Industrial Gas Manufacturing	-233	-85	-194	-37	0	0	-3
221122	Electric Power Distribution	-246	-289	-165	-90	30	-19	0
325110	Petrochemical Manufacturing	-373	-725	0	0	-374	2	0
213112	Support Activities for Oil and Gas Operations	-1,779	-1,862	-957	-655	-250	-9	92
	Total	-2,991	-2,844	-1,923	-1,823	-297	131	920

Source: QCEW Employees - Emsi 2017.4 Class of Worker

Appendix A - Industries

Code	Description
211120	Crude Petroleum Extraction
211130	Natural Gas Extraction
212111	Bituminous Coal and Lignite Surface Mining
212112	Bituminous Coal Underground Mining
212113	Anthracite Mining
212210	Iron Ore Mining
212221	Gold Ore Mining
212222	Silver Ore Mining
212230	Copper, Nickel, Lead, and Zinc Mining
212291	Uranium-Radium-Vanadium Ore Mining
212299	All Other Metal Ore Mining
213111	Drilling Oil and Gas Wells
213112	Support Activities for Oil and Gas Operations
213113	Support Activities for Coal Mining
221111	Hydroelectric Power Generation
221112	Fossil Fuel Electric Power Generation
221113	Nuclear Electric Power Generation
221114	Solar Electric Power Generation
221115	Wind Electric Power Generation
221116	Geothermal Electric Power Generation
221117	Biomass Electric Power Generation
221118	Other Electric Power Generation
221121	Electric Bulk Power Transmission and Control
221122	Electric Power Distribution
221210	Natural Gas Distribution
221320	Sewage Treatment Facilities
324110	Petroleum Refineries
324199	All Other Petroleum and Coal Products Manufacturing
325110	Petrochemical Manufacturing

Code	Description
325120	Industrial Gas Manufacturing
325180	Other Basic Inorganic Chemical Manufacturing
325193	Ethyl Alcohol Manufacturing
325194	Cyclic Crude, Intermediate, and Gum and Wood Chemical Manufacturing
325199	All Other Basic Organic Chemical Manufacturing
325212	Synthetic Rubber Manufacturing
325312	Phosphatic Fertilizer Manufacturing
325320	Pesticide and Other Agricultural Chemical Manufacturing
454310	Fuel Dealers
486110	Pipeline Transportation of Crude Oil
486210	Pipeline Transportation of Natural Gas
486910	Pipeline Transportation of Refined Petroleum Products
486990	All Other Pipeline Transportation
517311	Wired Telecommunications Carriers
517911	Telecommunications Resellers
541360	Geophysical Surveying and Mapping Services
562212	Solid Waste Landfill
562910	Remediation Services

Appendix B - Data Sources and Calculations

Industry Data

Emsi industry data have various sources depending on the class of worker. (1) For QCEW Employees, Emsi primarily uses the QCEW (Quarterly Census of Employment and Wages), with supplemental estimates from County Business Patterns. (2) Non-QCEW employees data are based on a number of sources including QCEW, Current Employment Statistics, County Business Patterns, BEA State and Local Personal Income reports, the National Industry-Occupation Employment Matrix (NIOEM), the American Community Survey, and Railroad Retirement Board statistics. (3) Self-Employed and Extended Proprietor classes of worker data are primarily based on the American Community Survey, Nonemployer Statistics, and BEA State and Local Personal Income Reports. Projections for QCEW and Non-QCEW Employees are informed by NIOEM and long-term industry projections published by individual states.

Staffing Patterns Data

The staffing pattern data in this report are compiled from several sources using a specialized process. For QCEW and Non-QCEW Employees classes of worker, sources include Occupational Employment Statistics, the National Industry-Occupation Employment Matrix, and the American Community Survey. For the Self-Employed and Extended Proprietors classes of worker, the primary source is the American Community Survey, with a small amount of information from Occupational Employment Statistics.

State Data Sources

This report uses state data from the following agencies: Louisiana Department of Labor