

# Regional Comparison by Industry

Comparing Digital Media across 7 Regions

Emsi Q4 2017 Data Set

December 2017

## Regional Planning Commission



10 Veterans Blvd.  
New Orleans, Louisiana 70124

# Parameters

## Industries

14 items selected. See Appendix A for details.

## Region

Code	Description	Level
Group	5 Parish Region	FIPS
Group	New Orleans MSA	FIPS
22051	Jefferson Parish, LA	FIPS
22071	Orleans Parish, LA	FIPS
22075	Plaquemines Parish, LA	FIPS
22087	St. Bernard Parish, LA	FIPS
22103	St. Tammany Parish, LA	FIPS

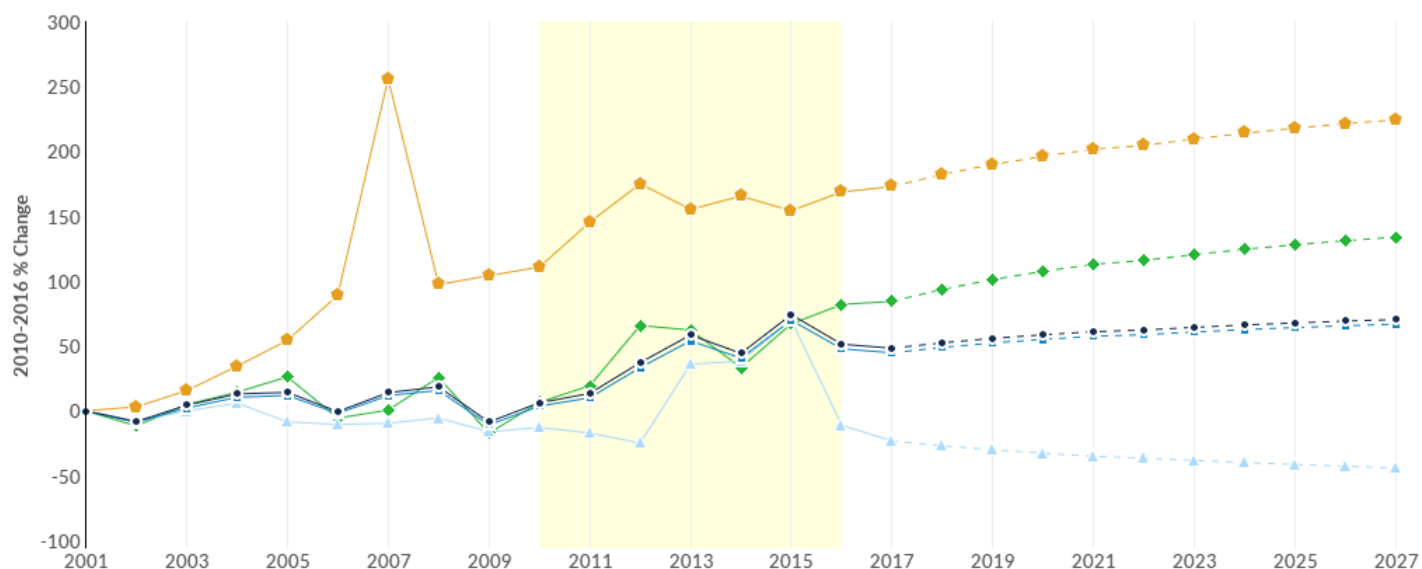
## Timeframe

2010 - 2016

## Datarun

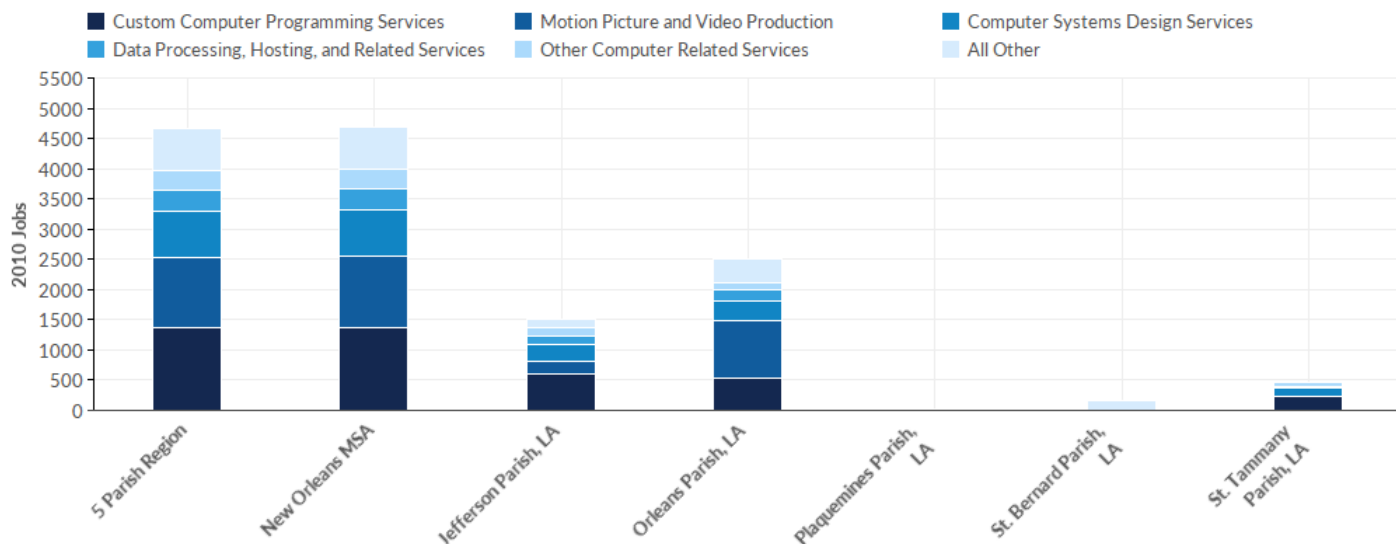
2017.4 - QCEW Employees

# Industry Change Summary



Region	2010 Jobs	2016 Jobs	Change	% Change	2017 Average Earnings	2017 Payrolled Business Locations
● 5 Parish Region	4,665	6,646	1,981	42%	\$81,534	1,072
■ New Orleans MSA	4,696	6,699	2,003	43%	\$81,469	1,087
▲ Jefferson Parish, LA	1,512	1,541	29	2%	\$78,864	273
◆ Orleans Parish, LA	2,514	4,295	1,781	71%	\$80,261	551
✚ Plaquemines Parish, LA	26	32	6	23%	\$133,558	6
★ St. Bernard Parish, LA	<10	<10	--	--	\$68,245	7
◆ St. Tammany Parish, LA	604	770	166	27%	\$90,967	236

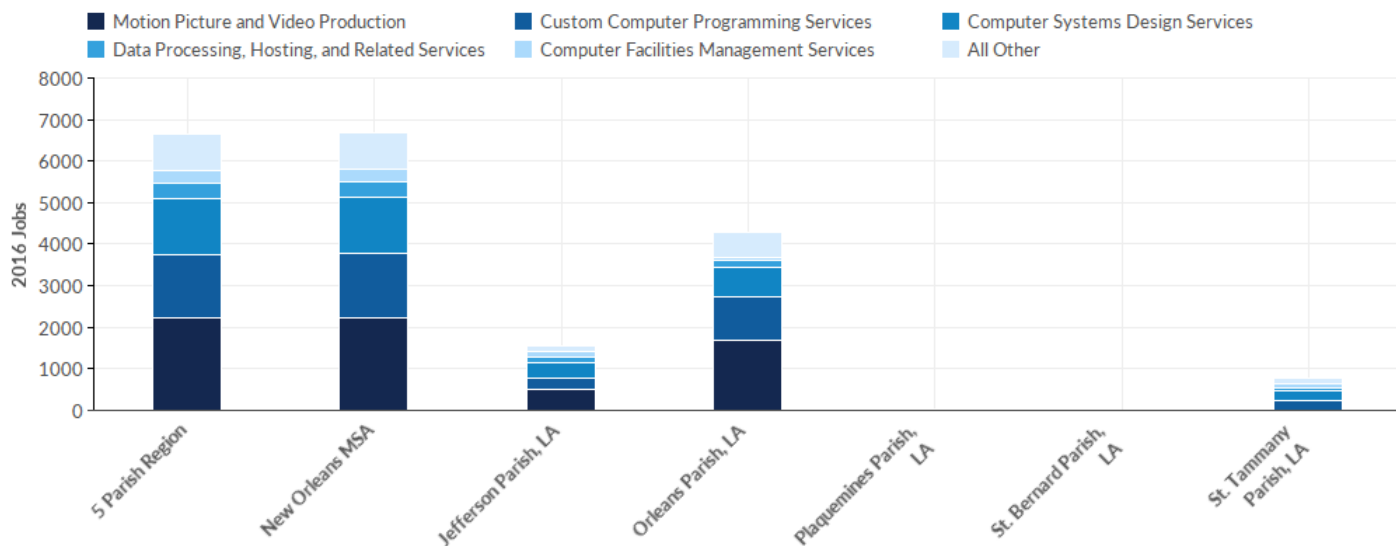
# Industry Breakdown - 2010 Jobs



Industry	Description	5 Parish Region	New Orleans MSA	Jefferson Parish, LA	Orleans Parish, LA	Plaquemines Parish, LA	St. Bernard Parish, LA	St. Tammany Parish, LA
541511	Custom Computer Programming Services	1,364	1,377	595	544	0	<10	221
512110	Motion Picture and Video Production	1,170	1,175	216	951	0	<10	<10
541512	Computer Systems Design Services	765	773	276	305	25	0	160
518210	Data Processing, Hosting, and Related Services	342	343	141	190	<10	<10	<10
541519	Other Computer Related Services	330	330	138	127	0	0	65
541513	Computer Facilities Management Services	225	226	51	109	0	0	66
519130	Internet Publishing and Broadcasting and Web Search Portals	147	147	28	114	0	0	<10
511210	Software Publishers	114	115	27	32	0	0	55
541430	Graphic Design Services	98	99	34	52	0	<10	<10
541490	Other Specialized Design Services	80	80	<10	70	0	0	<10
512191	Teleproduction and Other Postproduction Services	11	12	<10	<10	0	0	<10
512240	Sound Recording Studios	11	11	0	11	0	0	0
	Total	4,665	4,696	1,512	2,514	26	<10	604

Industry	Description	5 Parish Region	New Orleans MSA	Jefferson Parish, LA	Orleans Parish, LA	Plaquemines Parish, LA	St. Bernard Parish, LA	St. Tammany Parish, LA
541420	Industrial Design Services	<10	<10	<10	<10	0	0	0
512290	Other Sound Recording Industries	<10	<10	0	0	0	0	<10
	Total	4,665	4,696	1,512	2,514	26	<10	604

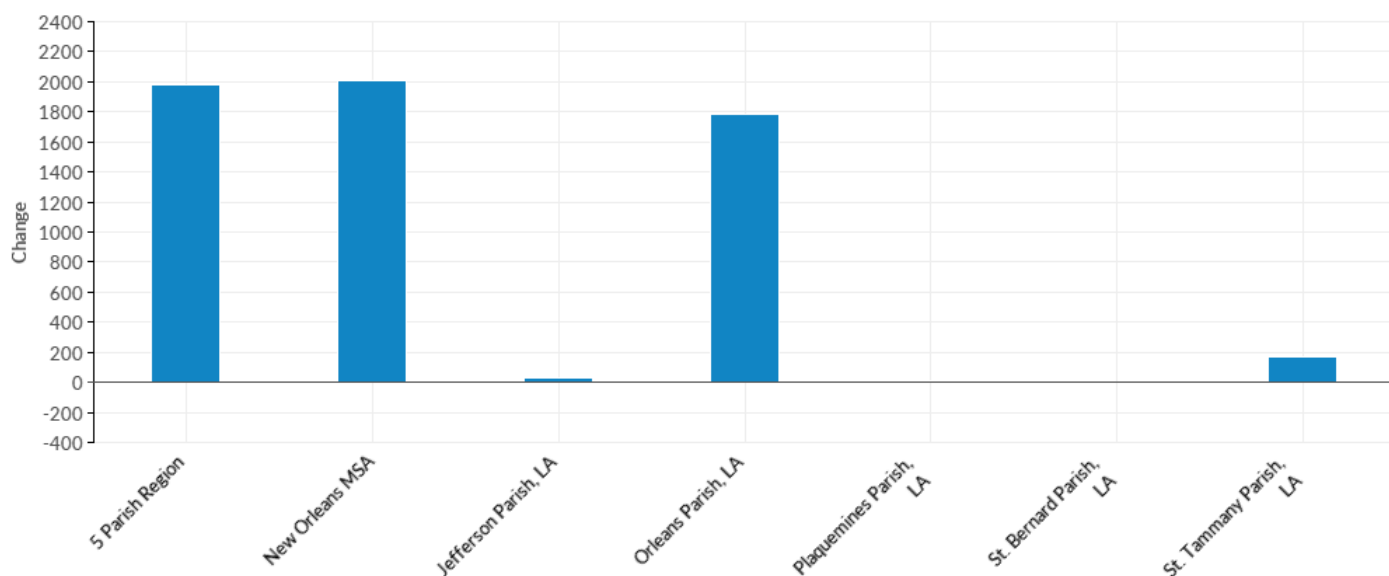
# Industry Breakdown - 2016 Jobs



Industry	Description	5 Parish Region	New Orleans MSA	Jefferson Parish, LA	Orleans Parish, LA	Plaquemines Parish, LA	St. Bernard Parish, LA	St. Tammany Parish, LA
512110	Motion Picture and Video Production	2,216	2,217	505	1,694	<10	<10	13
541511	Custom Computer Programming Services	1,538	1,554	267	1,026	<10	<10	236
541512	Computer Systems Design Services	1,352	1,377	376	730	18	0	229
518210	Data Processing, Hosting, and Related Services	372	372	143	154	0	<10	73
541513	Computer Facilities Management Services	292	292	120	87	0	0	85
541519	Other Computer Related Services	220	224	45	153	<10	0	16
519130	Internet Publishing and Broadcasting and Web Search Portals	192	192	17	164	0	0	11
511210	Software Publishers	167	175	12	100	0	0	55
541430	Graphic Design Services	137	137	26	90	0	<10	20
541490	Other Specialized Design Services	115	116	27	62	0	0	26
512191	Teleproduction and Other Postproduction Services	19	19	<10	17	0	0	<10
541420	Industrial Design Services	16	16	<10	12	0	0	<10
	Total	6,646	6,699	1,541	4,295	32	<10	770

Industry	Description	5 Parish Region	New Orleans MSA	Jefferson Parish, LA	Orleans Parish, LA	Plaquemines Parish, LA	St. Bernard Parish, LA	St. Tammany Parish, LA
512290	Other Sound Recording Industries	<10	<10	0	<10	0	0	<10
512240	Sound Recording Studios	<10	<10	0	<10	0	0	0
	Total	6,646	6,699	1,541	4,295	32	<10	770

## Industry Breakdown - Change

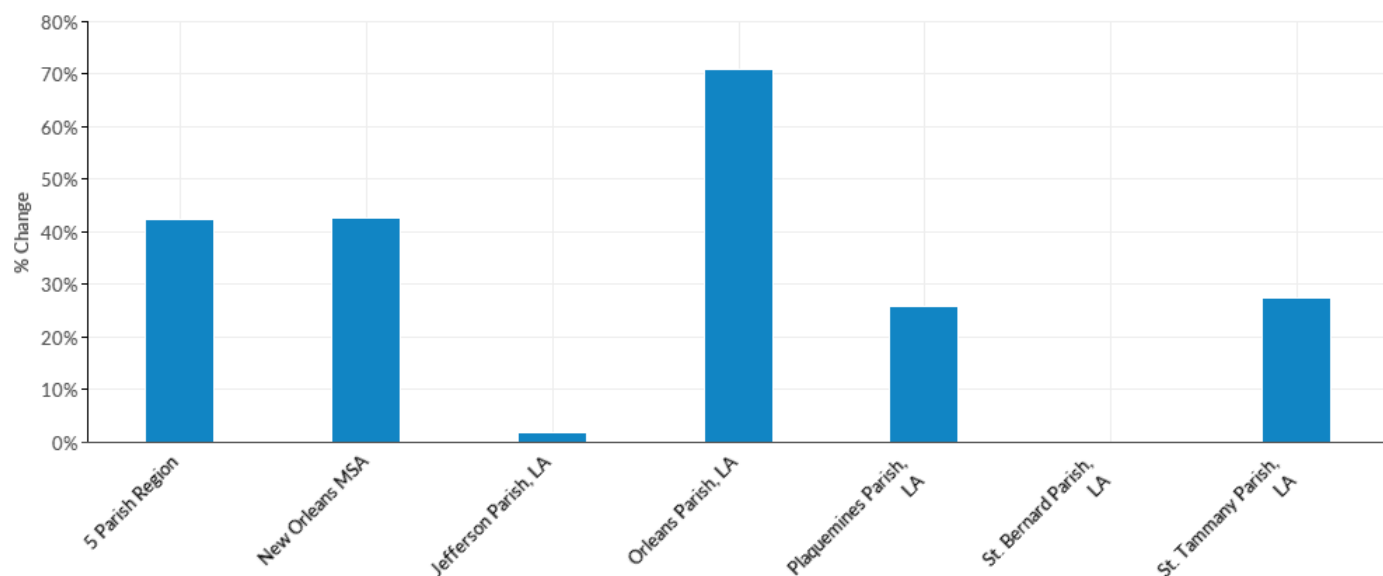


Industry	Description	5 Parish Region	New Orleans MSA	Jefferson Parish, LA	Orleans Parish, LA	Plaquemines Parish, LA	St. Bernard Parish, LA	St. Tammany Parish, LA
512110	Motion Picture and Video Production	1,046	1,042	289	743	--	--	--
541512	Computer Systems Design Services	587	604	100	425	-7	0	69
541511	Custom Computer Programming Services	174	177	-328	482	--	--	15
541513	Computer Facilities Management Services	67	66	69	-22	0	0	19
511210	Software Publishers	53	60	-15	68	0	0	0
519130	Internet Publishing and Broadcasting and Web Search Portals	45	45	-11	50	0	0	--
541430	Graphic Design Services	39	38	-8	38	0	--	--
541490	Other Specialized Design Services	35	36	--	-8	0	0	--
518210	Data Processing, Hosting, and Related Services	30	29	2	-36	--	--	--
541420	Industrial Design Services	--	--	--	--	0	0	--
512191	Teleproduction and Other Postproduction Services	8	7	--	--	0	0	--
512290	Other Sound Recording Industries	--	--	0	--	0	0	--
	<b>Total</b>	<b>1,981</b>	<b>2,003</b>	<b>29</b>	<b>1,781</b>	<b>6</b>	<b>0</b>	<b>166</b>



Industry	Description	5 Parish Region	New Orleans MSA	Jefferson Parish, LA	Orleans Parish, LA	Plaquemines Parish, LA	St. Bernard Parish, LA	St. Tammany Parish, LA
512240	Sound Recording Studios	--	--	0	--	0	0	0
541519	Other Computer Related Services	-110	-106	-93	26	--	0	-49
	Total	1,981	2,003	29	1,781	6	0	166

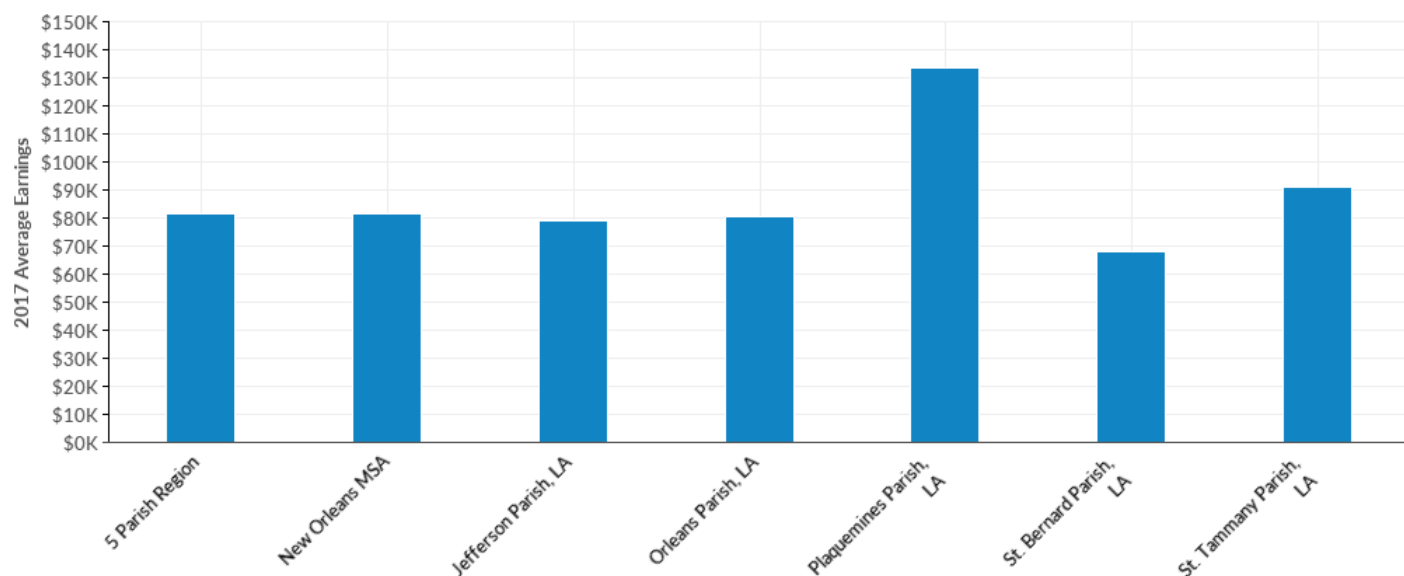
## Industry Breakdown - % Change



Industry	Description	5 Parish Region	New Orleans MSA	Jefferson Parish, LA	Orleans Parish, LA	Plaquemines Parish, LA	St. Bernard Parish, LA	St. Tammany Parish, LA
512290	Other Sound Recording Industries	--	--	0%	--	0%	0%	--
541420	Industrial Design Services	--	--	--	--	0%	0%	--
512110	Motion Picture and Video Production	89%	89%	134%	78%	--	--	--
541512	Computer Systems Design Services	77%	78%	36%	139%	-28%	0%	43%
512191	Teleproduction and Other Postproduction Services	73%	58%	--	--	0%	0%	--
511210	Software Publishers	46%	52%	-56%	213%	0%	0%	0%
541490	Other Specialized Design Services	44%	45%	--	-11%	0%	0%	--
541430	Graphic Design Services	40%	38%	-24%	73%	0%	--	--
519130	Internet Publishing and Broadcasting and Web Search Portals	31%	31%	-39%	44%	0%	0%	--
541513	Computer Facilities Management Services	30%	29%	135%	-20%	0%	0%	29%
541511	Custom Computer Programming Services	13%	13%	-55%	89%	--	--	7%
518210	Data Processing, Hosting, and Related Services	9%	8%	1%	-19%	--	--	--
	Total	42%	43%	2%	71%	23%	0%	27%

Industry	Description	5 Parish Region	New Orleans MSA	Jefferson Parish, LA	Orleans Parish, LA	Plaquemines Parish, LA	St. Bernard Parish, LA	St. Tammany Parish, LA
541519	Other Computer Related Services	-33%	-32%	-67%	20%	--	0%	-75%
512240	Sound Recording Studios	--	--	0%	--	0%	0%	0%
	Total	42%	43%	2%	71%	23%	0%	27%

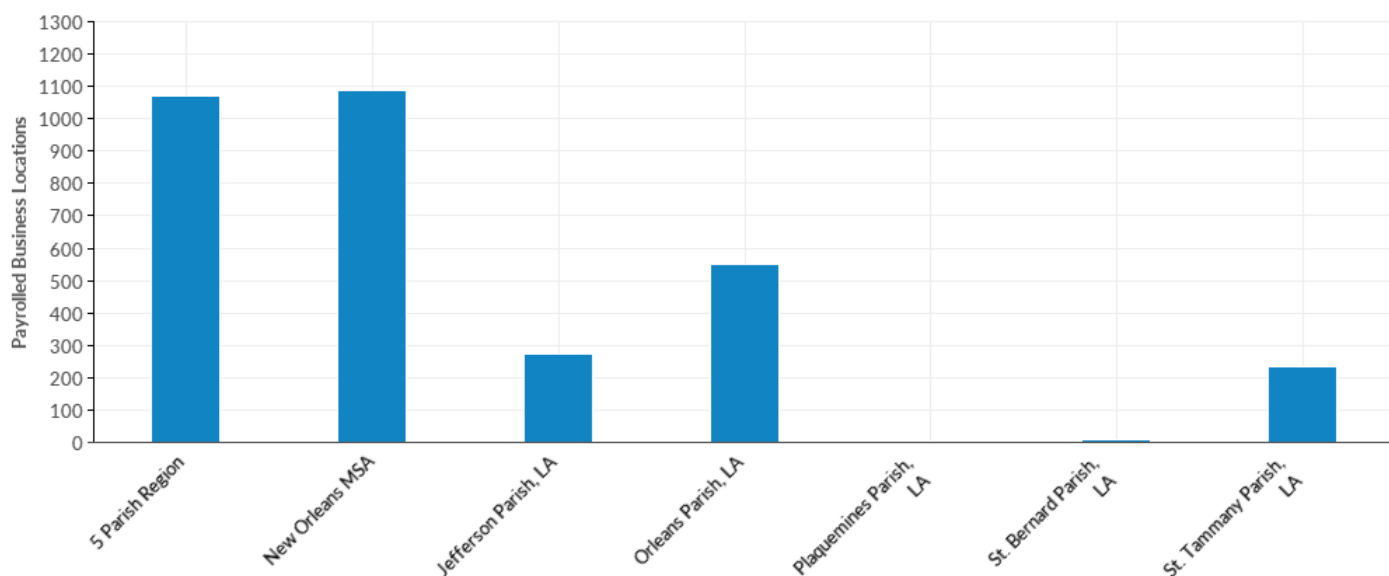
## Industry Breakdown - 2017 Average Earnings



Industry	Description	5 Parish Region	New Orleans MSA	Jefferson Parish, LA	Orleans Parish, LA	Plaquemines Parish, LA	St. Bernard Parish, LA	St. Tammany Parish, LA
511210	Software Publishers	\$114,533	\$114,784	\$118,236	\$99,583	\$0	\$0	\$144,453
541512	Computer Systems Design Services	\$101,389	\$101,254	\$109,622	\$92,752	\$190,745	\$0	\$107,792
512191	Teleproduction and Other Postproduction Services	\$99,881	\$99,881	--	\$100,101	\$0	\$0	--
541511	Custom Computer Programming Services	\$96,960	\$96,300	\$102,057	\$97,938	--	--	\$88,880
518210	Data Processing, Hosting, and Related Services	\$86,680	\$86,664	\$59,786	\$127,441	\$0	--	\$56,504
541519	Other Computer Related Services	\$75,059	\$75,493	\$83,675	\$70,605	--	\$0	\$92,380
519130	Internet Publishing and Broadcasting and Web Search Portals	\$72,563	\$72,563	\$96,439	\$69,853	\$0	\$0	\$72,653
541513	Computer Facilities Management Services	\$72,146	\$72,176	\$57,583	\$85,416	\$0	\$0	\$76,427
512290	Other Sound Recording Industries	--	--	\$0	--	\$0	\$0	--
541420	Industrial Design Services	\$58,637	\$58,637	--	\$50,876	\$0	\$0	--
512110	Motion Picture and Video Production	\$58,484	\$58,471	\$28,067	\$63,151	--	--	\$73,297
	<b>Total</b>	<b>\$81,534</b>	<b>\$81,469</b>	<b>\$78,864</b>	<b>\$80,261</b>	<b>\$133,558</b>	<b>\$68,245</b>	<b>\$90,967</b>

Industry	Description	5 Parish Region	New Orleans MSA	Jefferson Parish, LA	Orleans Parish, LA	Plaquemines Parish, LA	St. Bernard Parish, LA	St. Tammany Parish, LA
541430	Graphic Design Services	\$50,502	\$50,502	\$44,083	\$55,996	\$0	--	\$34,067
541490	Other Specialized Design Services	\$50,061	\$49,874	\$68,816	\$40,542	\$0	\$0	\$57,861
512240	Sound Recording Studios	--	--	\$0	--	\$0	\$0	\$0
	Total	\$81,534	\$81,469	\$78,864	\$80,261	\$133,558	\$68,245	\$90,967

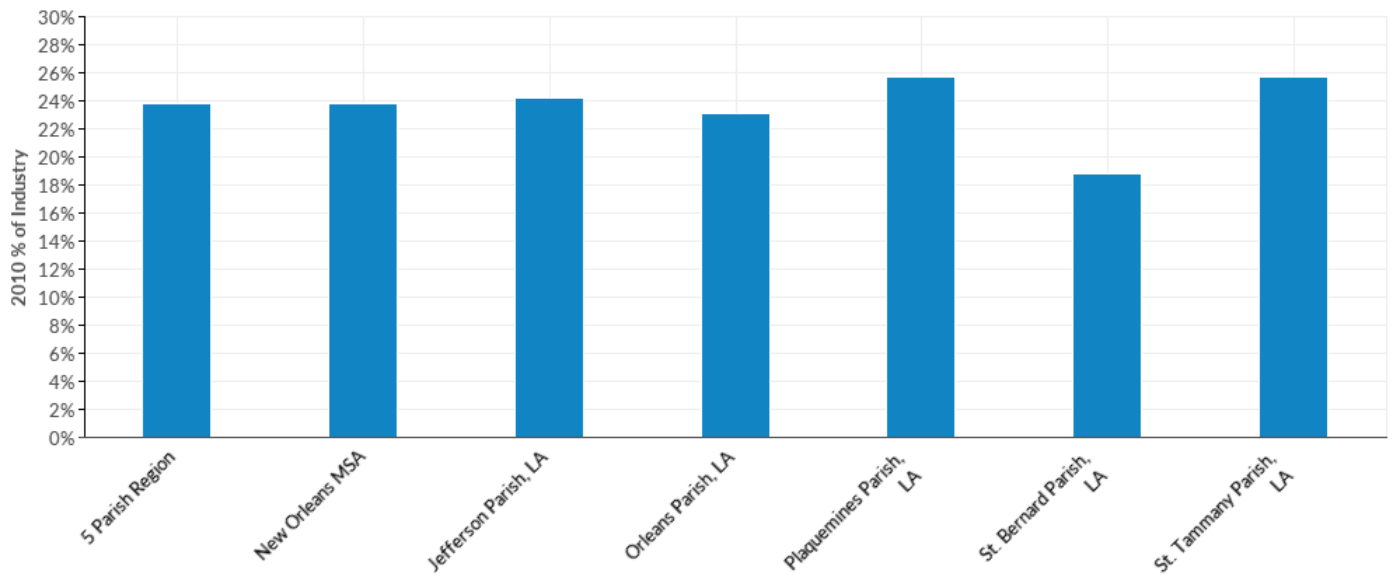
## Industry Breakdown - Payrolled Business Locations



Industry	Description	5 Parish Region	New Orleans MSA	Jefferson Parish, LA	Orleans Parish, LA	Plaquemines Parish, LA	St. Bernard Parish, LA	St. Tammany Parish, LA
541511	Custom Computer Programming Services	338	340	70	183	1	3	81
541512	Computer Systems Design Services	241	244	80	97	3	0	62
518210	Data Processing, Hosting, and Related Services	91	91	27	44	0	1	19
512110	Motion Picture and Video Production	88	92	22	58	1	1	6
541519	Other Computer Related Services	79	81	23	31	1	0	24
541430	Graphic Design Services	57	57	19	29	0	2	8
511210	Software Publishers	57	59	9	34	0	0	15
519130	Internet Publishing and Broadcasting and Web Search Portals	53	53	8	34	0	0	11
541513	Computer Facilities Management Services	33	33	10	19	0	0	4
541490	Other Specialized Design Services	18	19	4	10	0	0	4
512191	Teleproduction and Other Postproduction Services	11	11	1	8	0	0	1
541420	Industrial Design Services	4	4	1	2	0	0	1
	Total	1,072	1,087	273	551	6	7	236

Industry	Description	5 Parish Region	New Orleans MSA	Jefferson Parish, LA	Orleans Parish, LA	Plaquemines Parish, LA	St. Bernard Parish, LA	St. Tammany Parish, LA
512290	Other Sound Recording Industries	2	2	0	1	0	0	1
512240	Sound Recording Studios	2	2	0	2	0	0	0
	Total	1,072	1,087	273	551	6	7	236

## Top Occupations - 2010 % of Industry

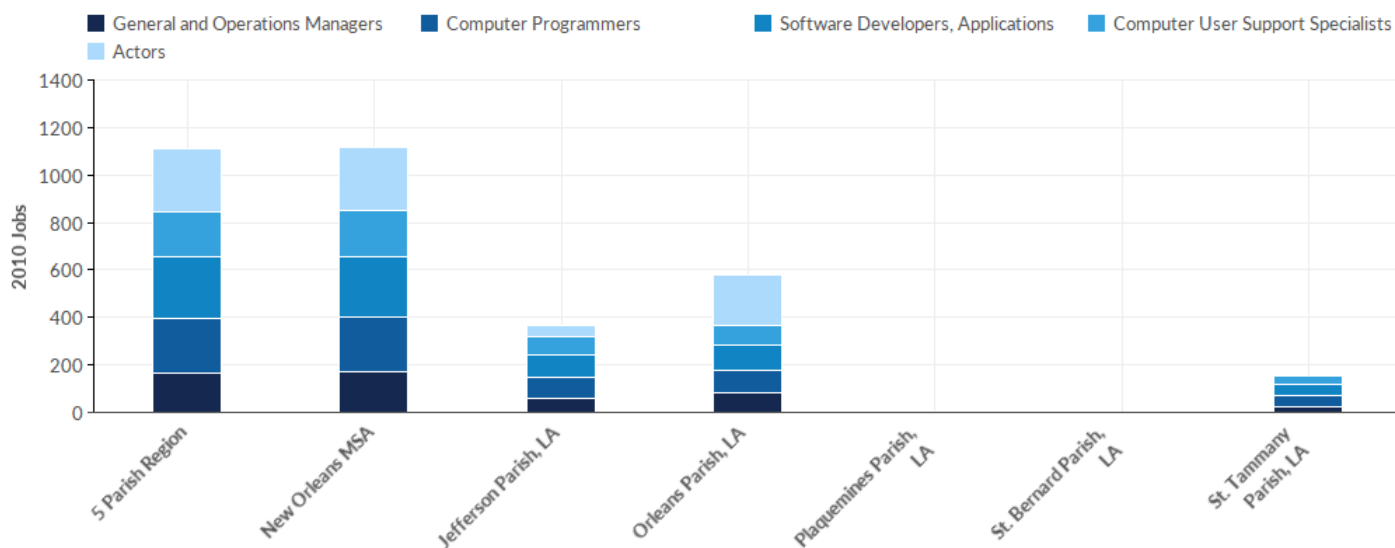


SOC Code	Description	5 Parish Region	New Orleans MSA	Jefferson Parish, LA	Orleans Parish, LA	Plaquemines Parish, LA	St. Bernard Parish, LA	St. Tammany Parish, LA
27-2011	Actors	6%	6%	3%	9%	0%	2%	0%
15-1132	Software Developers, Applications	5%	5%	6%	4%	8%	5%	8%
15-1131	Computer Programmers	5%	5%	6%	4%	8%	4%	7%
15-1151	Computer User Support Specialists	4%	4%	5%	3%	6%	4%	6%
11-1021	General and Operations Managers	4%	4%	4%	3%	4%	4%	4%
	Total	24%	24%	24%	23%	26%	19%	26%

Source: QCEW Employees - Emsi 2017.4 Class of Worker



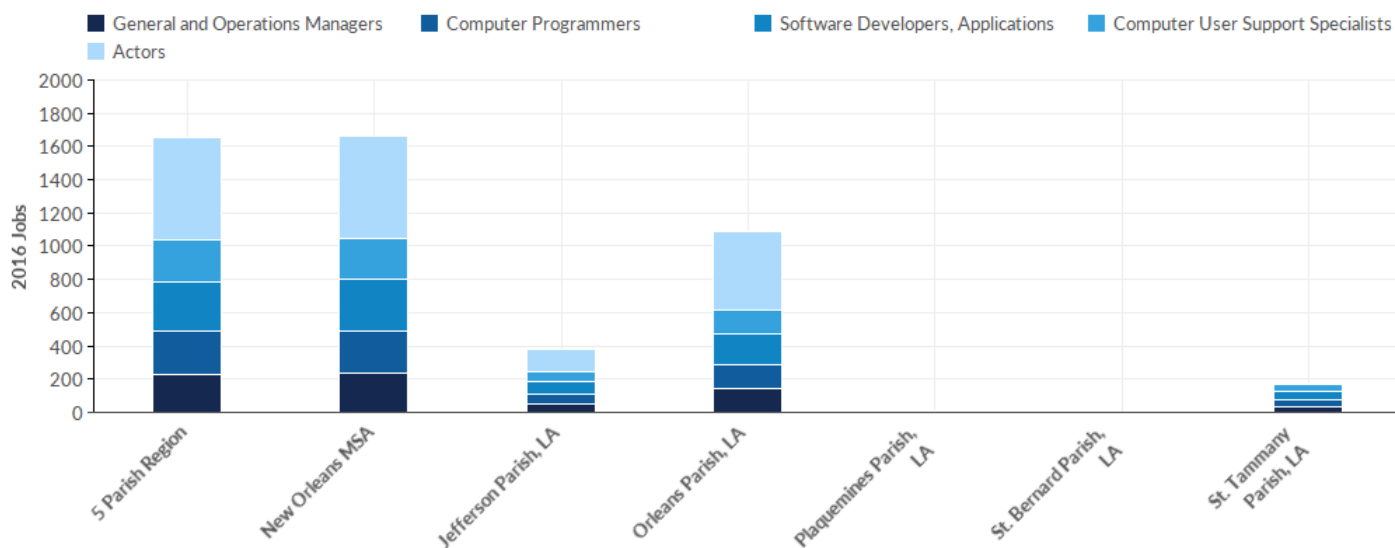
# Top Occupations - 2010 Jobs



SOC Code	Description	5 Parish Region	New Orleans MSA	Jefferson Parish, LA	Orleans Parish, LA	Plaquemines Parish, LA	St. Bernard Parish, LA	St. Tammany Parish, LA
27-2011	Actors	268	269	49	217	0	0	<10
15-1132	Software Developers, Applications	255	257	96	107	<10	<10	49
15-1131	Computer Programmers	230	232	89	96	<10	<10	44
15-1151	Computer User Support Specialists	189	191	73	81	<10	<10	34
11-1021	General and Operations Managers	168	169	59	81	<10	<10	26
	<b>Total</b>	<b>1,110</b>	<b>1,118</b>	<b>365</b>	<b>582</b>	<b>&lt;10</b>	<b>&lt;10</b>	<b>155</b>

Source: QCEW Employees - Emsi 2017.4 Class of Worker

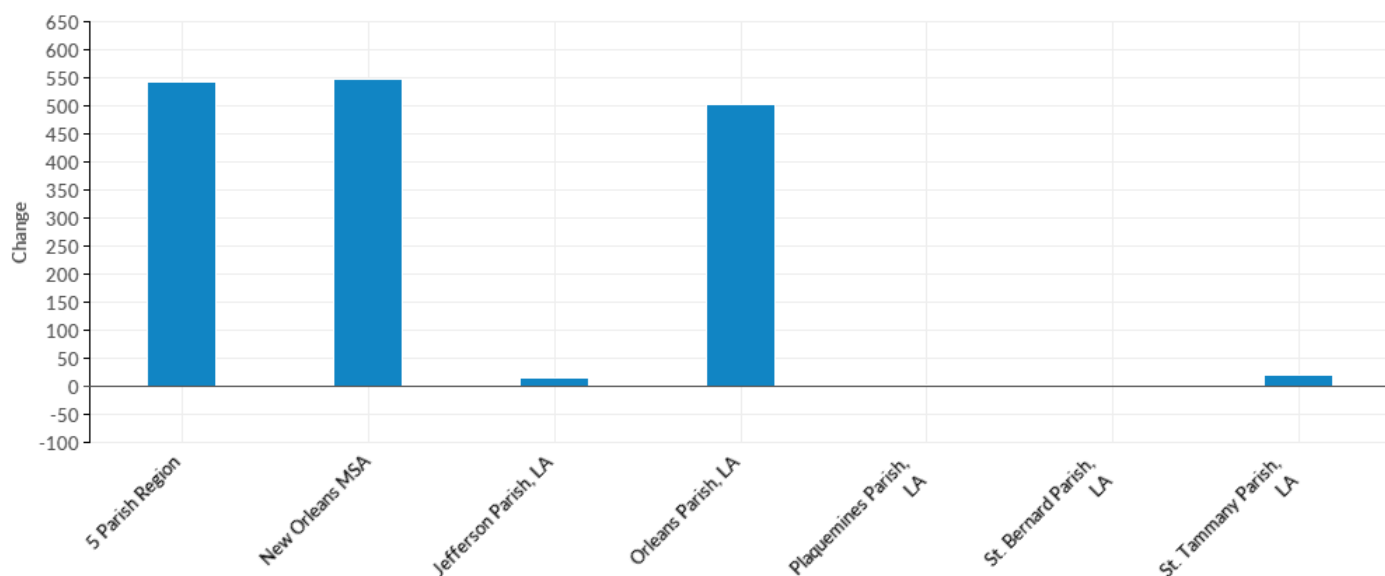
# Top Occupations - 2016 Jobs



SOC Code	Description	5 Parish Region	New Orleans MSA	Jefferson Parish, LA	Orleans Parish, LA	Plaquemines Parish, LA	St. Bernard Parish, LA	St. Tammany Parish, LA
27-2011	Actors	616	616	139	472	<10	<10	<10
15-1132	Software Developers, Applications	303	307	69	179	<10	<10	52
15-1131	Computer Programmers	253	257	59	148	<10	<10	44
15-1151	Computer User Support Specialists	247	250	59	144	<10	<10	42
11-1021	General and Operations Managers	232	234	54	142	<10	<10	34
	<b>Total</b>	<b>1,652</b>	<b>1,665</b>	<b>381</b>	<b>1,085</b>	<b>&lt;10</b>	<b>&lt;10</b>	<b>176</b>

Source: QCEW Employees - Emsi 2017.4 Class of Worker

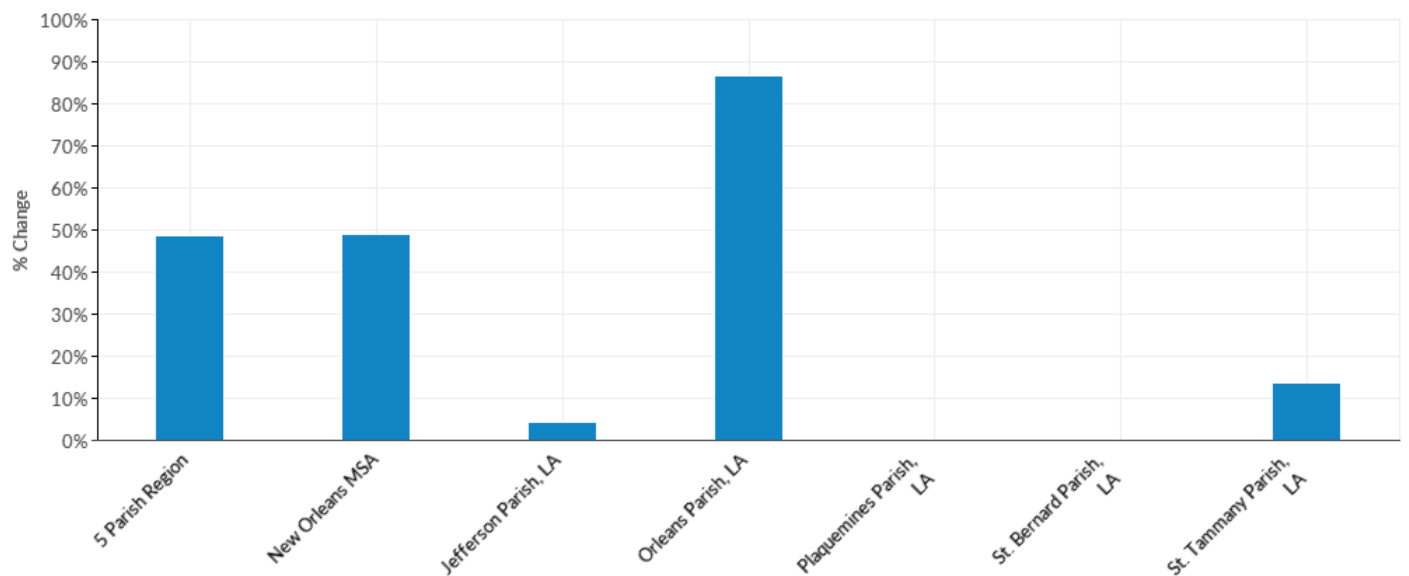
## Top Occupations - Change



SOC Code	Description	5 Parish Region	New Orleans MSA	Jefferson Parish, LA	Orleans Parish, LA	Plaquemines Parish, LA	St. Bernard Parish, LA	St. Tammany Parish, LA
27-2011	Actors	348	347	90	255	--	--	--
11-1021	General and Operations Managers	64	65	-5	61	--	--	8
15-1151	Computer User Support Specialists	58	59	-14	63	--	--	8
15-1132	Software Developers, Applications	48	50	-27	72	--	--	3
15-1131	Computer Programmers	23	25	-30	52	--	--	0
	Total	542	547	16	503	0	0	21

Source: QCEW Employees - Emsi 2017.4 Class of Worker

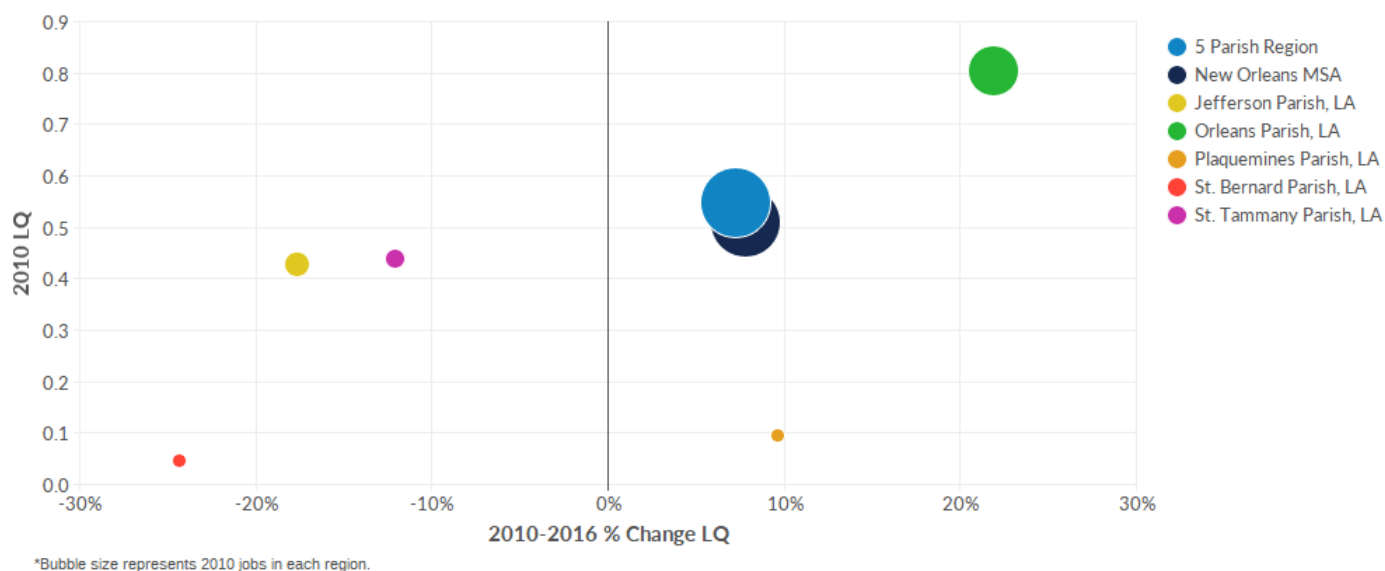
## Top Occupations - % Change



SOC Code	Description	5 Parish Region	New Orleans MSA	Jefferson Parish, LA	Orleans Parish, LA	Plaquemines Parish, LA	St. Bernard Parish, LA	St. Tammany Parish, LA
27-2011	Actors	130%	129%	184%	118%	--	--	--
11-1021	General and Operations Managers	38%	38%	-8%	75%	--	--	31%
15-1151	Computer User Support Specialists	31%	31%	-19%	78%	--	--	24%
15-1132	Software Developers, Applications	19%	19%	-28%	67%	--	--	6%
15-1131	Computer Programmers	10%	11%	-34%	54%	--	--	0%
	Total	49%	49%	4%	86%	0%	0%	14%

Source: QCEW Employees - Emsi 2017.4 Class of Worker

## Location Quotient Breakdown - 2010 National LQ

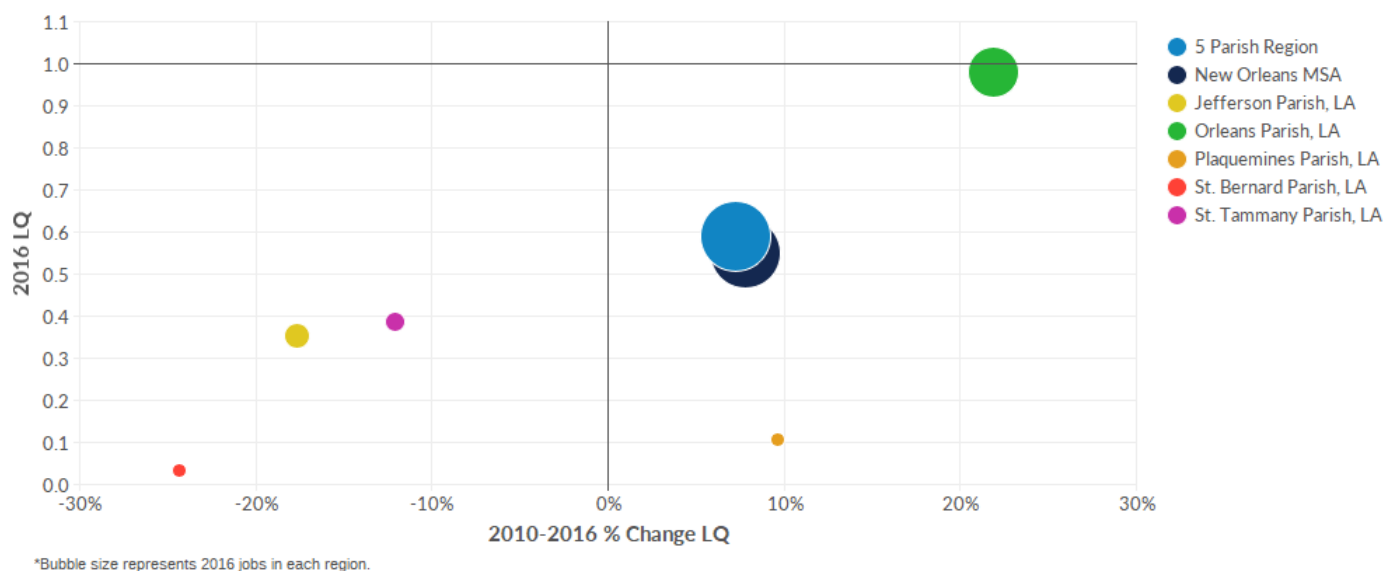


Industry	Description	5 Parish Region	New Orleans MSA	Jefferson Parish, LA	Orleans Parish, LA	Plaquemines Parish, LA	St. Bernard Parish, LA	St. Tammany Parish, LA
541490	Other Specialized Design Services	1.93	1.78	0.39	4.61	0.00	0.00	0.45
512110	Motion Picture and Video Production	1.63	1.52	0.72	3.61	0.00	0.05	0.02
541513	Computer Facilities Management Services	1.20	1.11	0.65	1.57	0.00	0.00	2.17
541519	Other Computer Related Services	0.85	0.78	0.85	0.89	0.00	0.00	1.04
541511	Custom Computer Programming Services	0.60	0.56	0.63	0.65	0.00	0.09	0.60
512240	Sound Recording Studios	0.58	0.53	0.00	1.57	0.00	0.00	0.00
541430	Graphic Design Services	0.45	0.42	0.37	0.65	0.00	0.55	0.28
519130	Internet Publishing and Broadcasting and Web Search Portals	0.44	0.41	0.21	0.94	0.00	0.00	0.08
518210	Data Processing, Hosting, and Related Services	0.39	0.36	0.39	0.59	0.03	0.03	0.06
541512	Computer Systems Design Services	0.32	0.30	0.28	0.35	0.33	0.00	0.41
512290	Other Sound Recording Industries	0.25	0.23	0.00	0.00	0.00	0.00	1.53
512191	Teleproduction and Other Postproduction Services	0.19	0.19	0.02	0.22	0.00	0.00	0.64
	Total	0.55	0.51	0.43	0.81	0.10	0.05	0.44

Industry	Description	5 Parish Region	New Orleans MSA	Jefferson Parish, LA	Orleans Parish, LA	Plaquemines Parish, LA	St. Bernard Parish, LA	St. Tammany Parish, LA
541420	Industrial Design Services	0.15	0.14	0.05	0.35	0.00	0.00	0.00
511210	Software Publishers	0.12	0.11	0.07	0.09	0.00	0.00	0.36
	Total	0.55	0.51	0.43	0.81	0.10	0.05	0.44

Source: QCEW Employees - Emsi 2017.4 Class of Worker

## Location Quotient Breakdown - 2016 National LQ



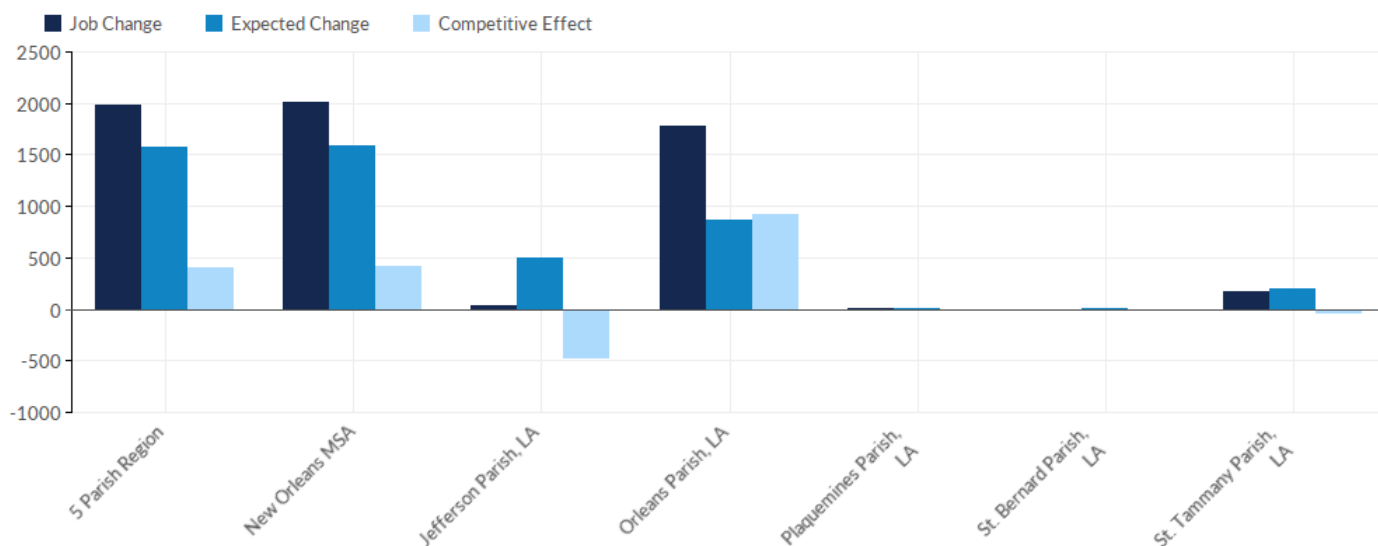
Industry	Description	5 Parish Region	New Orleans MSA	Jefferson Parish, LA	Orleans Parish, LA	Plaquemines Parish, LA	St. Bernard Parish, LA	St. Tammany Parish, LA
512110	Motion Picture and Video Production	2.48	2.30	1.46	4.89	0.09	0.06	0.08
541490	Other Specialized Design Services	2.16	2.02	1.31	2.99	0.00	0.00	2.78
541513	Computer Facilities Management Services	1.27	1.18	1.34	0.97	0.00	0.00	2.09
512290	Other Sound Recording Industries	0.75	0.69	0.00	0.64	0.00	0.00	2.84
541430	Graphic Design Services	0.61	0.57	0.30	1.04	0.00	0.26	0.50
541519	Other Computer Related Services	0.56	0.53	0.30	1.01	0.58	0.00	0.23
541511	Custom Computer Programming Services	0.51	0.48	0.23	0.88	0.07	0.06	0.44
541512	Computer Systems Design Services	0.41	0.38	0.29	0.57	0.20	0.00	0.39
518210	Data Processing, Hosting, and Related Services	0.35	0.33	0.35	0.38	0.00	0.08	0.39
512191	Teleproduction and Other Postproduction Services	0.34	0.31	0.03	0.79	0.00	0.00	0.11
512240	Sound Recording Studios	0.30	0.28	0.00	0.77	0.00	0.00	0.00
519130	Internet Publishing and Broadcasting and Web Search Portals	0.27	0.25	0.06	0.59	0.00	0.00	0.08
	Total	0.59	0.55	0.35	0.98	0.11	0.03	0.39

Industry	Description	5 Parish Region	New Orleans MSA	Jefferson Parish, LA	Orleans Parish, LA	Plaquemines Parish, LA	St. Bernard Parish, LA	St. Tammany Parish, LA
541420	Industrial Design Services	0.26	0.24	0.13	0.49	0.00	0.00	0.12
511210	Software Publishers	0.13	0.13	0.02	0.21	0.00	0.00	0.25
	Total	0.59	0.55	0.35	0.98	0.11	0.03	0.39

Source: QCEW Employees - Emsi 2017.4 Class of Worker



## Shift Share Breakdown - Job Change

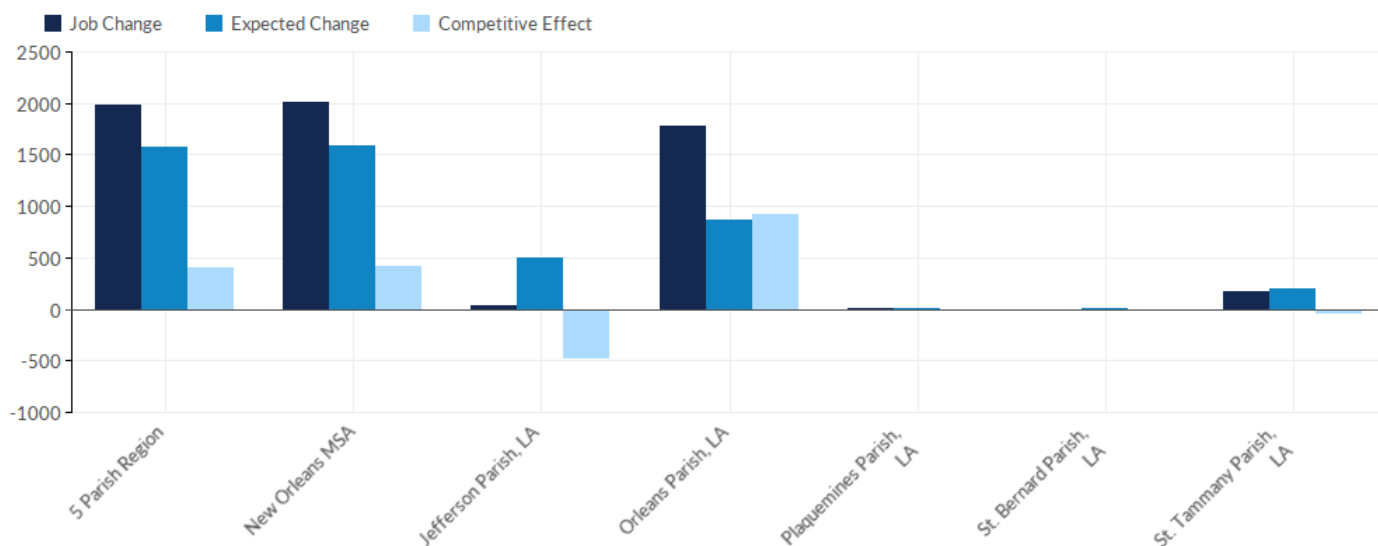


Industry	Description	5 Parish Region	New Orleans MSA	Jefferson Parish, LA	Orleans Parish, LA	Plaquemines Parish, LA	St. Bernard Parish, LA	St. Tammany Parish, LA
512110	Motion Picture and Video Production	1,046	1,042	289	743	2	0	11
541512	Computer Systems Design Services	587	604	100	425	-7	0	69
541511	Custom Computer Programming Services	174	176	-328	482	6	-1	15
541513	Computer Facilities Management Services	66	66	69	-22	0	0	19
511210	Software Publishers	53	60	-15	68	0	0	0
519130	Internet Publishing and Broadcasting and Web Search Portals	45	45	-11	50	0	0	6
541430	Graphic Design Services	39	38	-8	38	0	-2	10
541490	Other Specialized Design Services	35	36	20	-8	0	0	23
518210	Data Processing, Hosting, and Related Services	30	29	2	-36	-1	1	64
541420	Industrial Design Services	10	10	2	6	0	0	1
512191	Teleproduction and Other Postproduction Services	8	7	0	12	0	0	-5
512290	Other Sound Recording Industries	4	4	0	2	0	0	2
	Total	1,981	2,003	29	1,780	7	-1	166

Industry	Description	5 Parish Region	New Orleans MSA	Jefferson Parish, LA	Orleans Parish, LA	Plaquemines Parish, LA	St. Bernard Parish, LA	St. Tammany Parish, LA
512240	Sound Recording Studios	-6	-6	0	-6	0	0	0
541519	Other Computer Related Services	-110	-107	-93	26	6	0	-49
	Total	1,981	2,003	29	1,780	7	-1	166

Source: QCEW Employees - Emsi 2017.4 Class of Worker

## Shift Share Breakdown - Expected Change

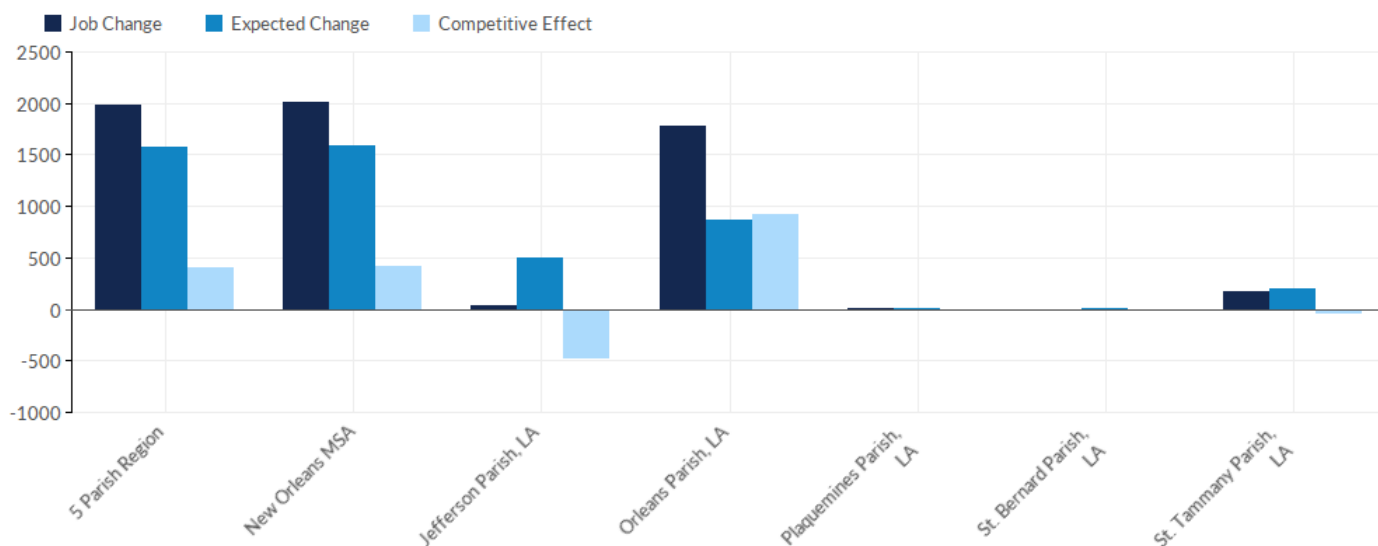


Industry	Description	5 Parish Region	New Orleans MSA	Jefferson Parish, LA	Orleans Parish, LA	Plaquemines Parish, LA	St. Bernard Parish, LA	St. Tammany Parish, LA
541511	Custom Computer Programming Services	504	509	220	201	0	2	82
512110	Motion Picture and Video Production	332	334	61	270	0	0	1
541512	Computer Systems Design Services	327	330	118	130	11	0	68
519130	Internet Publishing and Broadcasting and Web Search Portals	180	180	35	140	0	0	6
518210	Data Processing, Hosting, and Related Services	83	83	34	46	0	0	2
541513	Computer Facilities Management Services	58	59	13	28	0	0	17
511210	Software Publishers	42	42	10	12	0	0	20
541490	Other Specialized Design Services	26	26	2	23	0	0	1
541519	Other Computer Related Services	11	11	5	4	0	0	2
541430	Graphic Design Services	6	6	2	3	0	0	1
541420	Industrial Design Services	3	3	0	3	0	0	0
512290	Other Sound Recording Industries	0	0	0	0	0	0	0
	Total	1,572	1,583	500	860	11	2	200

Industry	Description	5 Parish Region	New Orleans MSA	Jefferson Parish, LA	Orleans Parish, LA	Plaquemines Parish, LA	St. Bernard Parish, LA	St. Tammany Parish, LA
512191	Teleproduction and Other Postproduction Services	0	0	0	0	0	0	0
512240	Sound Recording Studios	-1	-1	0	-1	0	0	0
	Total	1,572	1,583	500	860	11	2	200

Source: QCEW Employees - Emsi 2017.4 Class of Worker

## Shift Share Breakdown - Competitive Effect



Industry	Description	5 Parish Region	New Orleans MSA	Jefferson Parish, LA	Orleans Parish, LA	Plaquemines Parish, LA	St. Bernard Parish, LA	St. Tammany Parish, LA
512110	Motion Picture and Video Production	714	708	228	473	2	0	10
541512	Computer Systems Design Services	260	273	-17	295	-18	0	1
541430	Graphic Design Services	33	32	-10	35	0	-2	9
511210	Software Publishers	11	18	-25	56	0	0	-20
541490	Other Specialized Design Services	9	10	18	-31	0	0	22
541513	Computer Facilities Management Services	8	7	56	-50	0	0	2
512191	Teleproduction and Other Postproduction Services	8	7	0	12	0	0	-5
541420	Industrial Design Services	7	7	2	4	0	0	1
512290	Other Sound Recording Industries	4	4	0	2	0	0	2
512240	Sound Recording Studios	-5	-5	0	-5	0	0	0
518210	Data Processing, Hosting, and Related Services	-53	-54	-32	-82	-1	1	61
541519	Other Computer Related Services	-121	-118	-97	21	6	0	-51
	Total	408	421	-471	921	-5	-3	-34

Industry	Description	5 Parish Region	New Orleans MSA	Jefferson Parish, LA	Orleans Parish, LA	Plaquemines Parish, LA	St. Bernard Parish, LA	St. Tammany Parish, LA
519130	Internet Publishing and Broadcasting and Web Search Portals	-135	-135	-46	-90	0	0	0
541511	Custom Computer Programming Services	-330	-333	-548	281	6	-2	-67
	Total	408	421	-471	921	-5	-3	-34

Source: QCEW Employees - Emsi 2017.4 Class of Worker

# Appendix A - Industries

Code	Description
511210	Software Publishers
512110	Motion Picture and Video Production
512191	Teleproduction and Other Postproduction Services
512240	Sound Recording Studios
512290	Other Sound Recording Industries
518210	Data Processing, Hosting, and Related Services
519130	Internet Publishing and Broadcasting and Web Search Portals
541420	Industrial Design Services
541430	Graphic Design Services
541490	Other Specialized Design Services
541511	Custom Computer Programming Services
541512	Computer Systems Design Services
541513	Computer Facilities Management Services
541519	Other Computer Related Services

# Appendix B - Data Sources and Calculations

## Industry Data

Emsi industry data have various sources depending on the class of worker. (1) For QCEW Employees, Emsi primarily uses the QCEW (Quarterly Census of Employment and Wages), with supplemental estimates from County Business Patterns. (2) Non-QCEW employees data are based on a number of sources including QCEW, Current Employment Statistics, County Business Patterns, BEA State and Local Personal Income reports, the National Industry-Occupation Employment Matrix (NIOEM), the American Community Survey, and Railroad Retirement Board statistics. (3) Self-Employed and Extended Proprietor classes of worker data are primarily based on the American Community Survey, Nonemployer Statistics, and BEA State and Local Personal Income Reports. Projections for QCEW and Non-QCEW Employees are informed by NIOEM and long-term industry projections published by individual states.

## Staffing Patterns Data

The staffing pattern data in this report are compiled from several sources using a specialized process. For QCEW and Non-QCEW Employees classes of worker, sources include Occupational Employment Statistics, the National Industry-Occupation Employment Matrix, and the American Community Survey. For the Self-Employed and Extended Proprietors classes of worker, the primary source is the American Community Survey, with a small amount of information from Occupational Employment Statistics.

## State Data Sources

This report uses state data from the following agencies: Louisiana Department of Labor