

REGIONAL PLANNING COMMISSION
2000 Census Tract Map Series
 for the New Orleans Metropolitan Area

**Map ST-3: St. Tammany Parish
 Slidell Area**

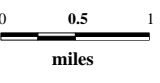
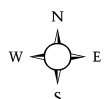
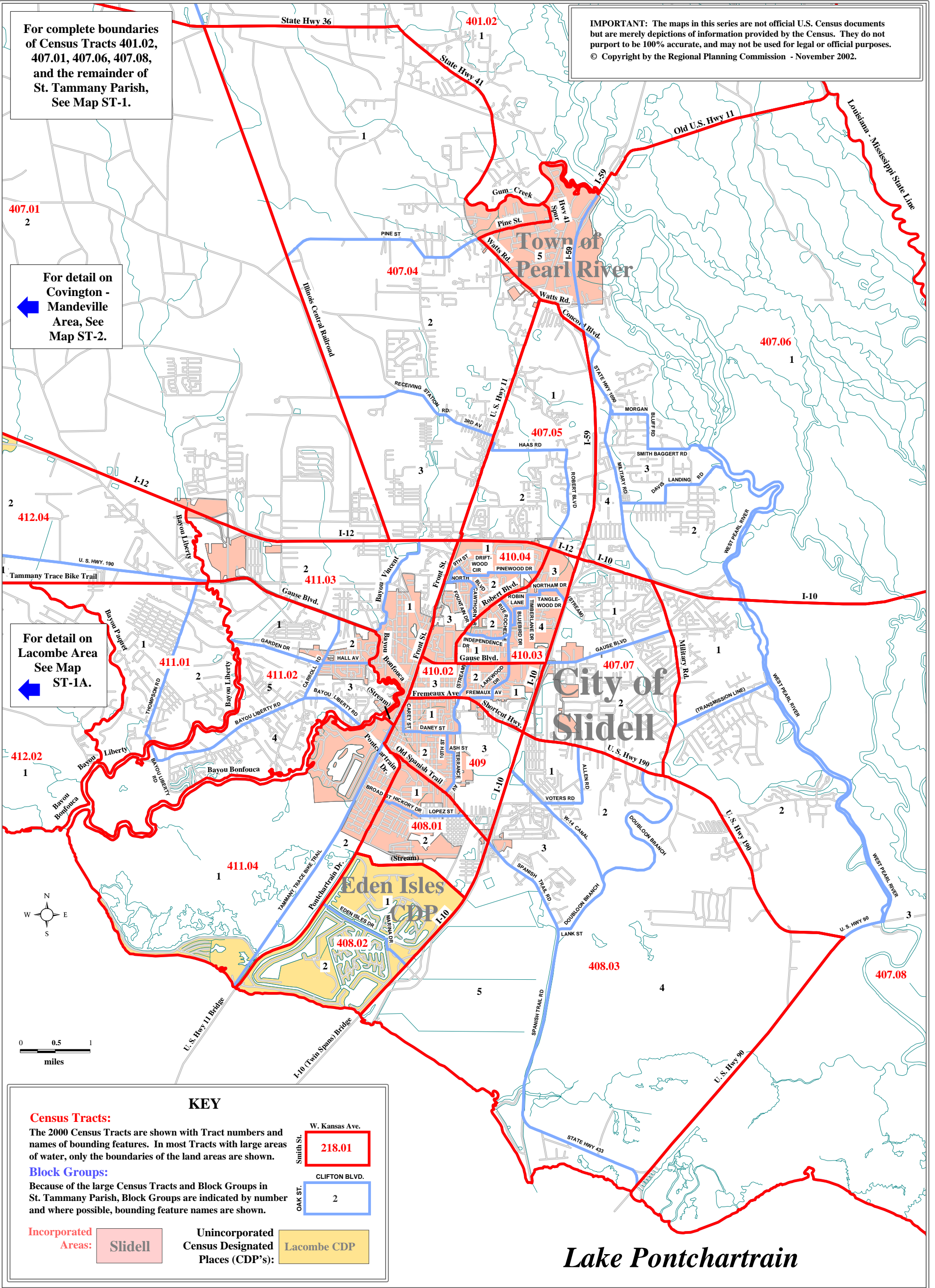
Prepared by the Regional Planning Commission for
 Jefferson, Orleans, Plaquemines, St. Bernard
 and St. Tammany Parishes - November 2002
 www.norpc.org

For complete boundaries
 of Census Tracts 401.02,
 407.01, 407.06, 407.08,
 and the remainder of
 St. Tammany Parish,
 See Map ST-1.

IMPORTANT: The maps in this series are not official U.S. Census documents
 but are merely depictions of information provided by the Census. They do not
 purport to be 100% accurate, and may not be used for legal or official purposes.
 © Copyright by the Regional Planning Commission - November 2002.

For detail on
 Covington -
 Mandeville
 Area, See
 Map ST-2.

For detail on
 Lacombe Area
 See Map
 ST-1A.



KEY

Census Tracts:

The 2000 Census Tracts are shown with Tract numbers and names of bounding features. In most Tracts with large areas of water, only the boundaries of the land areas are shown.

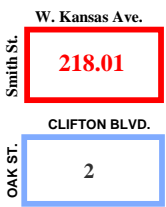
Block Groups:

Because of the large Census Tracts and Block Groups in St. Tammany Parish, Block Groups are indicated by number and where possible, bounding feature names are shown.

Incorporated Areas:



Unincorporated Census Designated Places (CDP's):



Lake Pontchartrain