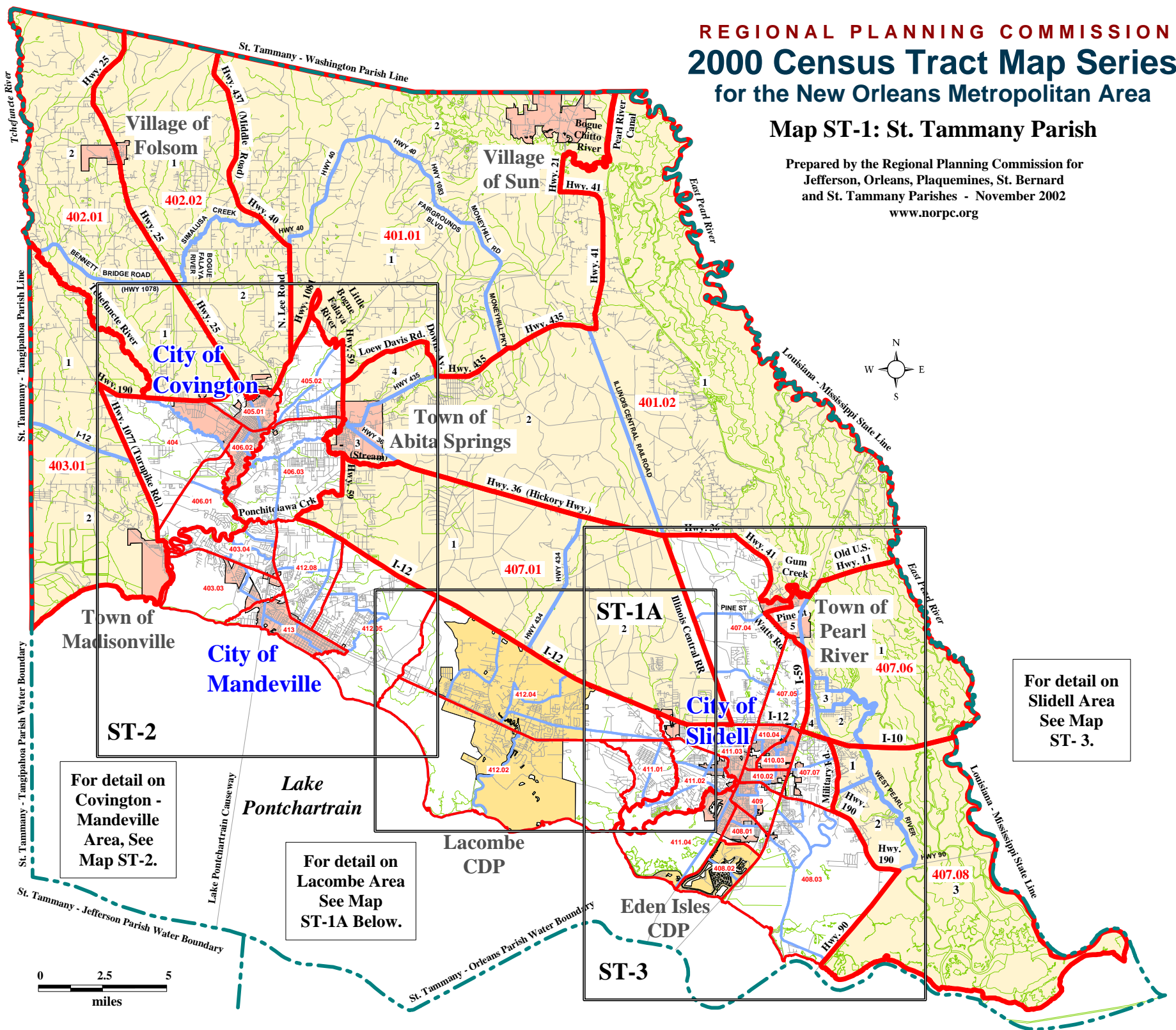


REGIONAL PLANNING COMMISSION  
**2000 Census Tract Map Series**  
 for the New Orleans Metropolitan Area

**Map ST-1: St. Tammany Parish**

Prepared by the Regional Planning Commission for  
 Jefferson, Orleans, Plaquemines, St. Bernard  
 and St. Tammany Parishes - November 2002  
 www.norpc.org



For detail on  
 Slidell Area  
 See Map  
 ST- 3.

For detail on  
 Covington -  
 Mandeville  
 Area, See  
 Map ST-2.

For detail on  
 Lacombe Area  
 See Map  
 ST-1A Below.

For detail on  
 Covington -  
 Mandeville  
 Area, See  
 Map ST-2.

**KEY**

**Census Tracts:**  
 The 2000 Census Tracts are shown with Tract numbers and names of bounding features. In most Tracts with large areas of water, only the boundaries of the land areas are shown.

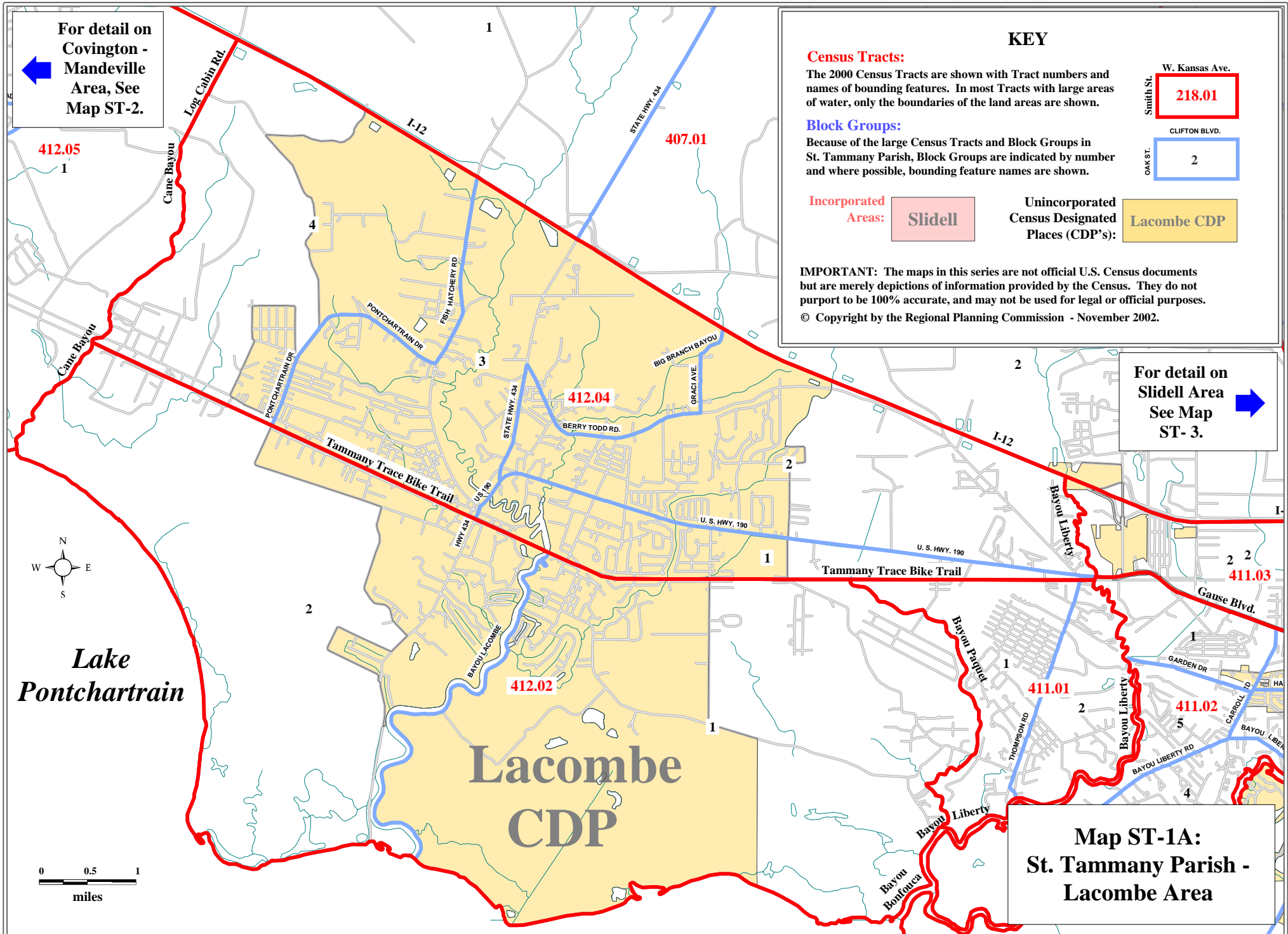
**Block Groups:**  
 Because of the large Census Tracts and Block Groups in St. Tammany Parish, Block Groups are indicated by number and where possible, bounding feature names are shown.

**Incorporated Areas:** Slidell

**Unincorporated Census Designated Places (CDP's):** Lacombe CDP

**IMPORTANT:** The maps in this series are not official U.S. Census documents but are merely depictions of information provided by the Census. They do not purport to be 100% accurate, and may not be used for legal or official purposes.  
 © Copyright by the Regional Planning Commission - November 2002.

For detail on  
 Slidell Area  
 See Map  
 ST- 3.



**Map ST-1A:  
 St. Tammany Parish -  
 Lacombe Area**