

# Regional Comparison by Industry

Comparing Tourism, Arts and Entertainment, Dining (not fast food) across 7 Regions

Emsi Q4 2017 Data Set

December 2017

## Regional Planning Commission



10 Veterans Blvd.  
New Orleans, Louisiana 70124

# Parameters

## Industries

39 items selected. See Appendix A for details.

## Region

Code	Description	Level
Group	5 Parish Region	FIPS
Group	New Orleans MSA	FIPS
22051	Jefferson Parish, LA	FIPS
22071	Orleans Parish, LA	FIPS
22075	Plaquemines Parish, LA	FIPS
22087	St. Bernard Parish, LA	FIPS
22103	St. Tammany Parish, LA	FIPS

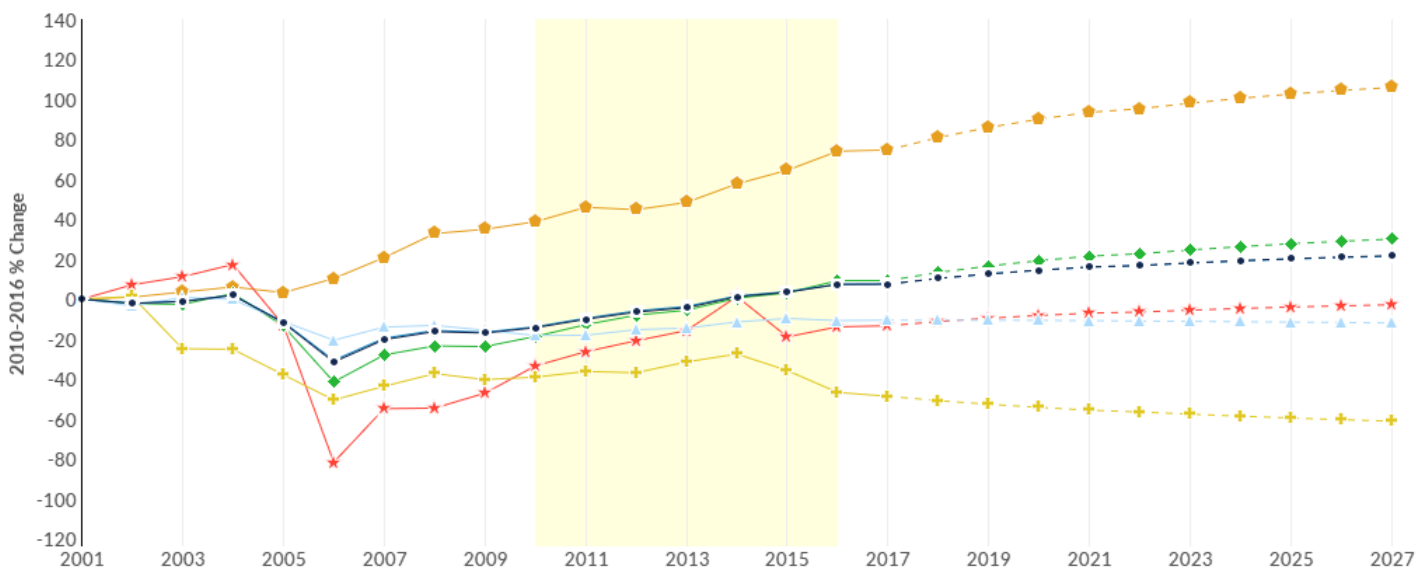
## Timeframe

2010 - 2016

## Datarun

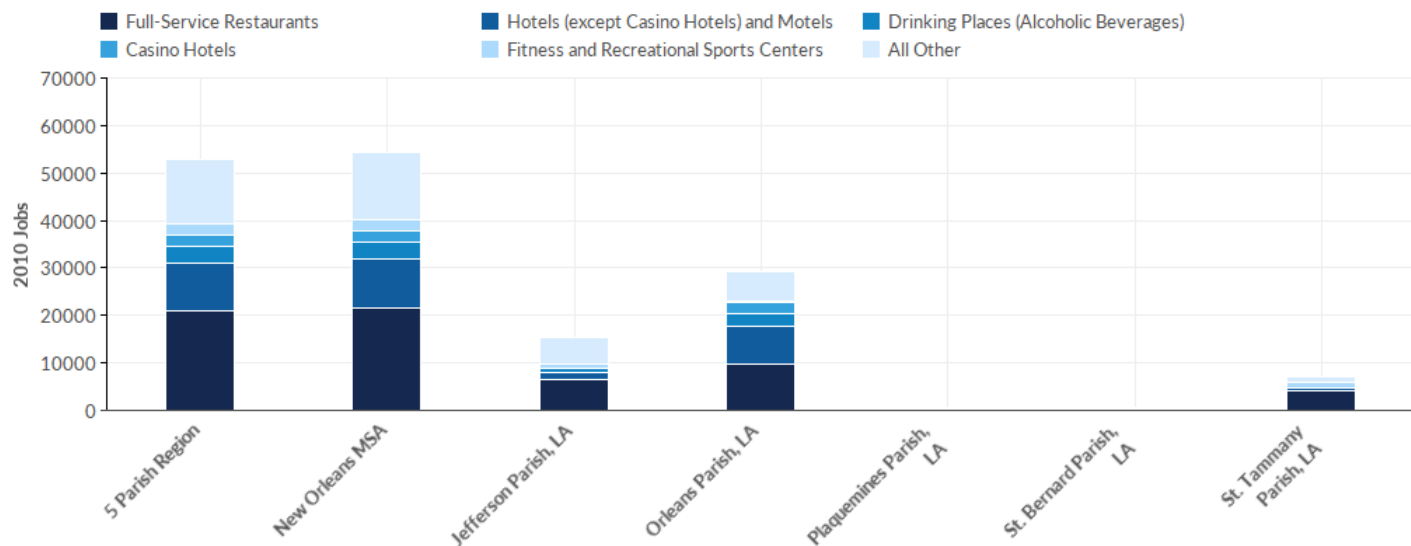
2017.4 - QCEW Employees

# Industry Change Summary



Region	2010 Jobs	2016 Jobs	Change	% Change	2017 Average Earnings	2017 Payrolled Business Locations
● 5 Parish Region	53,010	66,437	13,427	25%	\$34,329	3,047
■ New Orleans MSA	54,374	67,854	13,480	25%	\$34,018	3,193
▲ Jefferson Parish, LA	15,348	16,753	1,405	9%	\$46,571	916
◆ Orleans Parish, LA	29,386	39,512	10,126	34%	\$32,535	1,502
✚ Plaquemines Parish, LA	604	528	-76	-13%	\$29,805	50
★ St. Bernard Parish, LA	539	698	159	29%	\$20,829	73
⬠ St. Tammany Parish, LA	7,132	8,946	1,814	25%	\$20,650	507

# Industry Breakdown - 2010 Jobs

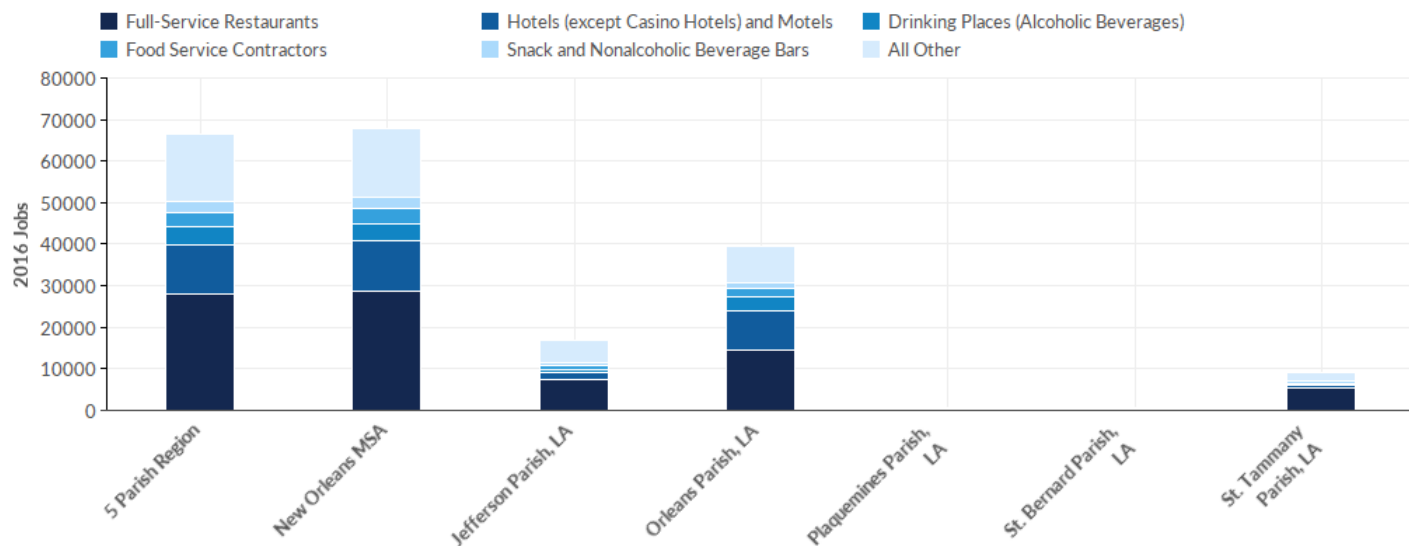


Industry	Description	5 Parish Region	New Orleans MSA	Jefferson Parish, LA	Orleans Parish, LA	Plaquemines Parish, LA	St. Bernard Parish, LA	St. Tammany Parish, LA
722511	Full-Service Restaurants	20,933	21,477	6,469	9,818	116	296	4,234
721110	Hotels (except Casino Hotels) and Motels	10,152	10,424	1,603	8,023	118	13	396
722410	Drinking Places (Alcoholic Beverages)	3,579	3,641	719	2,518	47	103	192
721120	Casino Hotels	2,364	2,364	0	2,364	0	0	0
713940	Fitness and Recreational Sports Centers	2,247	2,332	969	303	<10	<10	967
722310	Food Service Contractors	2,166	2,187	844	1,030	208	0	84
722515	Snack and Nonalcoholic Beverage Bars	1,922	1,996	725	744	19	24	410
713210	Casinos (except Casino Hotels)	1,398	1,398	1,398	0	0	0	0
722514	Cafeterias, Grill Buffets, and Buffets	1,392	1,405	612	483	0	0	297
711310	Promoters of Performing Arts, Sports, and Similar Events with Facilities	1,312	1,312	15	1,296	0	0	<10
722320	Caterers	791	810	376	238	49	14	114
713910	Golf Courses and Country Clubs	690	816	294	242	0	0	154
712130	Zoos and Botanical Gardens	660	660	0	660	0	0	0
	Total	53,010	54,374	15,348	29,386	604	539	7,132

Industry	Description	5 Parish Region	New Orleans MSA	Jefferson Parish, LA	Orleans Parish, LA	Plaquemines Parish, LA	St. Bernard Parish, LA	St. Tammany Parish, LA
713290	Other Gambling Industries	578	623	371	69	<10	69	63
712110	Museums	456	490	10	438	0	0	<10
711211	Sports Teams and Clubs	445	445	301	140	0	0	<10
713990	All Other Amusement and Recreation Industries	329	342	197	68	<10	<10	61
711219	Other Spectator Sports	203	203	67	132	0	0	<10
713930	Marinas	191	191	29	107	40	<10	14
711130	Musical Groups and Artists	187	188	12	175	0	0	0
711320	Promoters of Performing Arts, Sports, and Similar Events without Facilities	177	178	25	152	0	0	<10
711212	Racetracks	164	178	62	102	0	<10	0
713950	Bowling Centers	140	140	68	40	0	0	31
713120	Amusement Arcades	123	123	80	<10	0	<10	27
722330	Mobile Food Services	62	62	<10	18	0	0	34
711110	Theater Companies and Dinner Theaters	62	62	<10	54	0	0	0
721214	Recreational and Vacation Camps (except Campgrounds)	42	42	38	0	0	0	<10
712120	Historical Sites	42	83	0	42	0	0	0
711510	Independent Artists, Writers, and Performers	40	40	<10	19	0	0	13
721191	Bed-and-Breakfast Inns	37	37	<10	35	<10	0	0
721211	RV (Recreational Vehicle) Parks and Campgrounds	30	30	<10	<10	0	0	16
721310	Rooming and Boarding Houses, Dormitories, and Workers' Camps	28	28	16	<10	0	0	<10
711410	Agents and Managers for Artists, Athletes, Entertainers, and Other Public Figures	25	25	<10	24	0	0	<10
711120	Dance Companies	20	20	12	<10	0	0	0
711190	Other Performing Arts Companies	11	11	<10	<10	0	0	0
	Total	53,010	54,374	15,348	29,386	604	539	7,132

Industry	Description	5 Parish Region	New Orleans MSA	Jefferson Parish, LA	Orleans Parish, LA	Plaquemines Parish, LA	St. Bernard Parish, LA	St. Tammany Parish, LA
713110	Amusement and Theme Parks	<10	<10	0	<10	0	0	0
721199	All Other Traveler Accommodation	<10	<10	<10	<10	0	0	0
712190	Nature Parks and Other Similar Institutions	<10	<10	0	0	0	0	<10
713920	Skiing Facilities	0	0	0	0	0	0	0
	Total	53,010	54,374	15,348	29,386	604	539	7,132

# Industry Breakdown - 2016 Jobs



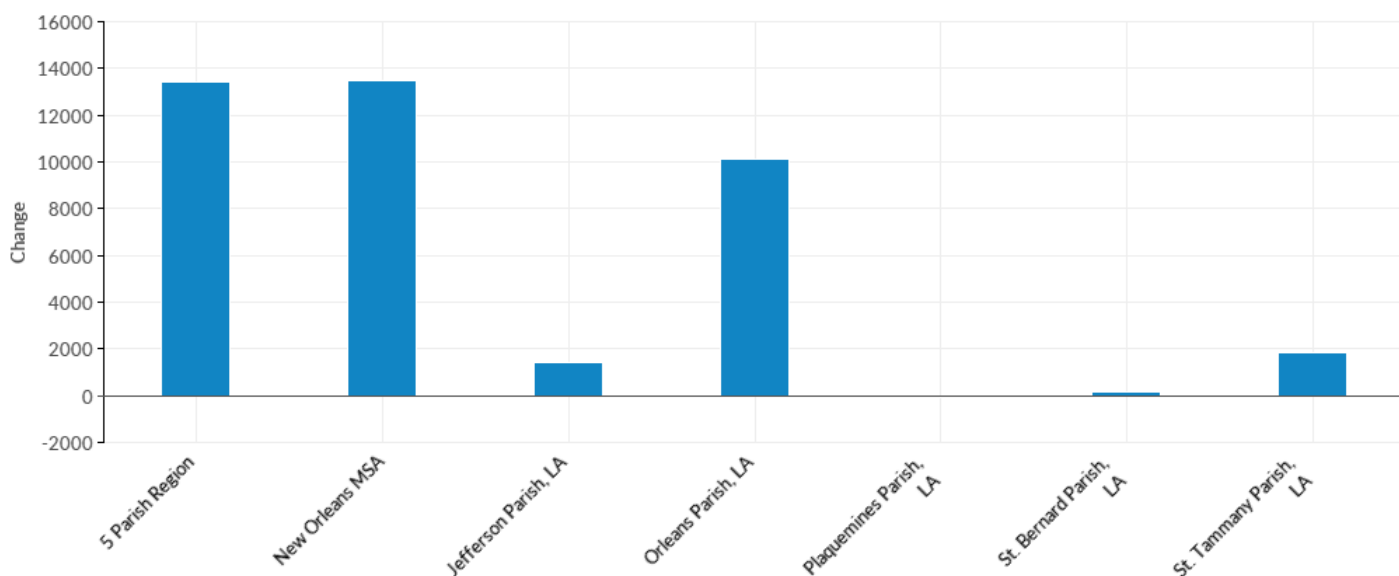
Industry	Description	5 Parish Region	New Orleans MSA	Jefferson Parish, LA	Orleans Parish, LA	Plaquemines Parish, LA	St. Bernard Parish, LA	St. Tammany Parish, LA
722511	Full-Service Restaurants	28,045	28,661	7,412	14,654	126	345	5,509
721110	Hotels (except Casino Hotels) and Motels	11,843	12,101	1,751	9,357	85	36	613
722410	Drinking Places (Alcoholic Beverages)	4,198	4,266	581	3,292	20	149	156
722310	Food Service Contractors	3,412	3,420	963	2,074	155	<10	219
722515	Snack and Nonalcoholic Beverage Bars	2,813	2,890	915	1,287	28	69	515
713940	Fitness and Recreational Sports Centers	2,583	2,644	916	561	<10	27	1,071
721120	Casino Hotels	2,272	2,272	0	2,272	0	0	0
711310	Promoters of Performing Arts, Sports, and Similar Events with Facilities	1,951	1,951	17	1,920	0	0	14
713210	Casinos (except Casino Hotels)	1,289	1,293	1,289	0	0	0	0
722320	Caterers	1,084	1,116	522	463	<10	<10	97
712130	Zoos and Botanical Gardens	796	796	0	789	0	0	<10
713910	Golf Courses and Country Clubs	773	891	239	285	<10	<10	238
722514	Cafeterias, Grill Buffets, and Buffets	679	692	431	104	0	<10	143
	Total	66,437	67,854	16,753	39,512	528	698	8,946

Industry	Description	5 Parish Region	New Orleans MSA	Jefferson Parish, LA	Orleans Parish, LA	Plaquemines Parish, LA	St. Bernard Parish, LA	St. Tammany Parish, LA
713990	All Other Amusement and Recreation Industries	618	629	322	189	<10	13	93
711212	Racetracks	613	613	70	543	0	<10	0
711211	Sports Teams and Clubs	581	581	560	14	0	0	<10
712110	Museums	578	599	<10	549	0	0	27
713290	Other Gambling Industries	457	538	344	40	<10	40	28
713950	Bowling Centers	255	255	131	89	0	0	36
711219	Other Spectator Sports	245	245	29	206	0	0	<10
713930	Marinas	211	211	<10	133	64	<10	<10
711130	Musical Groups and Artists	181	182	<10	176	0	0	<10
711320	Promoters of Performing Arts, Sports, and Similar Events without Facilities	140	140	23	90	0	0	27
711510	Independent Artists, Writers, and Performers	112	113	<10	64	0	0	39
721191	Bed-and-Breakfast Inns	111	111	33	66	12	0	<10
721310	Rooming and Boarding Houses, Dormitories, and Workers' Camps	109	109	14	79	12	0	<10
713120	Amusement Arcades	98	98	71	12	0	13	<10
722330	Mobile Food Services	91	91	<10	63	<10	0	17
721211	RV (Recreational Vehicle) Parks and Campgrounds	75	75	31	21	0	0	23
711110	Theater Companies and Dinner Theaters	67	67	17	50	0	0	0
711120	Dance Companies	42	42	24	17	0	<10	0
712120	Historical Sites	35	78	<10	33	0	0	0
721214	Recreational and Vacation Camps (except Campgrounds)	26	26	14	0	0	0	12
711410	Agents and Managers for Artists, Athletes, Entertainers, and Other Public Figures	19	20	<10	<10	0	0	<10
713110	Amusement and Theme Parks	14	14	0	0	0	0	14
	Total	66,437	67,854	16,753	39,512	528	698	8,946



Industry	Description	5 Parish Region	New Orleans MSA	Jefferson Parish, LA	Orleans Parish, LA	Plaquemines Parish, LA	St. Bernard Parish, LA	St. Tammany Parish, LA
721199	All Other Traveler Accommodation	14	14	0	<10	0	0	<10
711190	Other Performing Arts Companies	<10	<10	0	<10	0	0	0
712190	Nature Parks and Other Similar Institutions	<10	<10	0	0	0	0	<10
713920	Skiing Facilities	0	0	0	0	0	0	0
	Total	66,437	67,854	16,753	39,512	528	698	8,946

## Industry Breakdown - Change

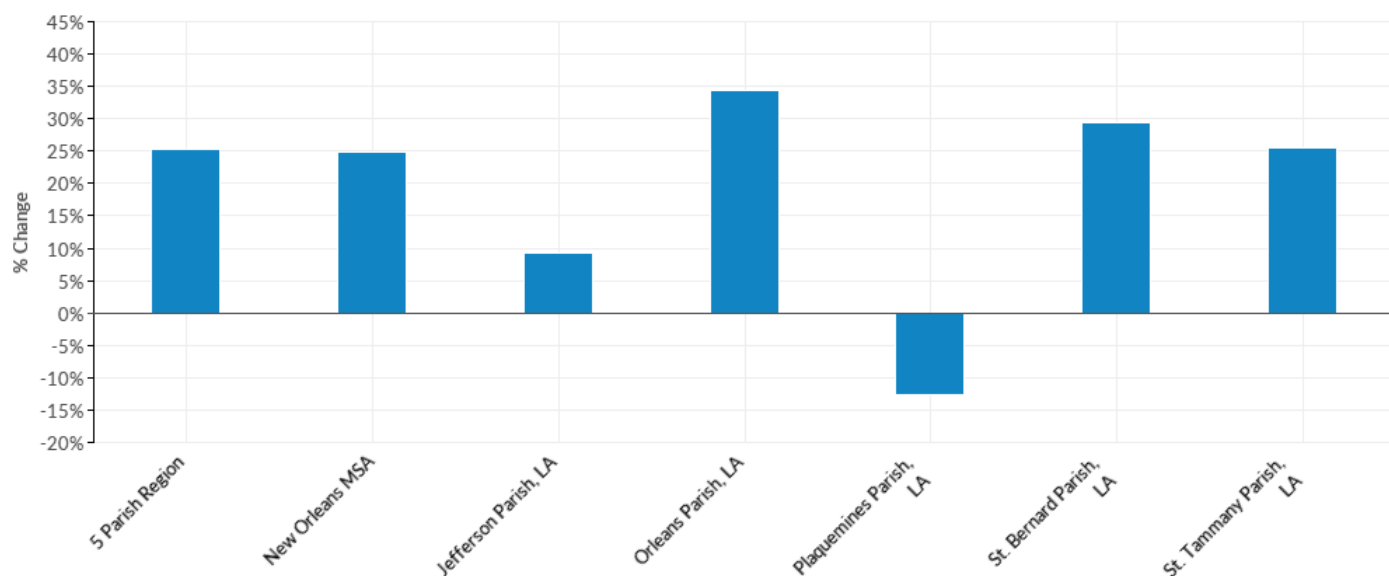


Industry	Description	5 Parish Region	New Orleans MSA	Jefferson Parish, LA	Orleans Parish, LA	Plaquemines Parish, LA	St. Bernard Parish, LA	St. Tammany Parish, LA
722511	Full-Service Restaurants	7,112	7,184	943	4,836	10	49	1,275
721110	Hotels (except Casino Hotels) and Motels	1,691	1,677	148	1,334	-33	23	217
722310	Food Service Contractors	1,246	1,233	119	1,044	-53	--	135
722515	Snack and Nonalcoholic Beverage Bars	891	894	190	543	9	45	105
711310	Promoters of Performing Arts, Sports, and Similar Events with Facilities	639	639	2	624	0	0	--
722410	Drinking Places (Alcoholic Beverages)	619	625	-138	774	-27	46	-36
711212	Racetracks	449	435	8	441	0	--	0
713940	Fitness and Recreational Sports Centers	336	312	-53	258	--	--	104
722320	Caterers	293	306	146	225	--	--	-17
713990	All Other Amusement and Recreation Industries	289	287	125	121	--	--	32
711211	Sports Teams and Clubs	136	136	259	-126	0	0	--
712130	Zoos and Botanical Gardens	136	136	0	129	0	0	--
712110	Museums	122	109	--	111	0	0	--
713950	Bowling Centers	115	115	63	49	0	0	5
	<b>Total</b>	<b>13,427</b>	<b>13,480</b>	<b>1,405</b>	<b>10,126</b>	<b>-76</b>	<b>159</b>	<b>1,814</b>

Industry	Description	5 Parish Region	New Orleans MSA	Jefferson Parish, LA	Orleans Parish, LA	Plaquemines Parish, LA	St. Bernard Parish, LA	St. Tammany Parish, LA
713910	Golf Courses and Country Clubs	83	75	-55	43	--	--	84
721310	Rooming and Boarding Houses, Dormitories, and Workers' Camps	81	81	-2	--	12	0	--
721191	Bed-and-Breakfast Inns	74	74	--	31	--	0	--
711510	Independent Artists, Writers, and Performers	72	73	--	45	0	0	26
721211	RV (Recreational Vehicle) Parks and Campgrounds	45	45	--	--	0	0	7
711219	Other Spectator Sports	42	42	-38	74	0	0	--
722330	Mobile Food Services	29	29	--	45	--	0	-17
711120	Dance Companies	22	22	12	--	0	--	0
713930	Marinas	20	20	--	26	24	--	--
721199	All Other Traveler Accommodation	--	--	--	--	0	0	--
713110	Amusement and Theme Parks	--	--	0	--	0	0	14
711110	Theater Companies and Dinner Theaters	5	5	--	-4	0	0	0
712190	Nature Parks and Other Similar Institutions	--	--	0	0	0	0	--
713920	Skiing Facilities	0	0	0	0	0	0	0
711190	Other Performing Arts Companies	--	--	--	--	0	0	0
711130	Musical Groups and Artists	-6	-6	--	1	0	0	--
711410	Agents and Managers for Artists, Athletes, Entertainers, and Other Public Figures	-6	-5	--	--	0	0	--
712120	Historical Sites	-7	-5	--	-9	0	0	0
721214	Recreational and Vacation Camps (except Campgrounds)	-16	-16	-24	0	0	0	--
713120	Amusement Arcades	-25	-25	-9	--	0	--	--
711320	Promoters of Performing Arts, Sports, and Similar Events without Facilities	-37	-38	-2	-62	0	0	--
	Total	13,427	13,480	1,405	10,126	-76	159	1,814

Industry	Description	5 Parish Region	New Orleans MSA	Jefferson Parish, LA	Orleans Parish, LA	Plaquemines Parish, LA	St. Bernard Parish, LA	St. Tammany Parish, LA
721120	Casino Hotels	-92	-92	0	-92	0	0	0
713210	Casinos (except Casino Hotels)	-109	-105	-109	0	0	0	0
713290	Other Gambling Industries	-121	-85	-27	-29	--	-29	-35
722514	Cafeterias, Grill Buffets, and Buffets	-713	-713	-181	-379	0	--	-154
	Total	13,427	13,480	1,405	10,126	-76	159	1,814

## Industry Breakdown - % Change

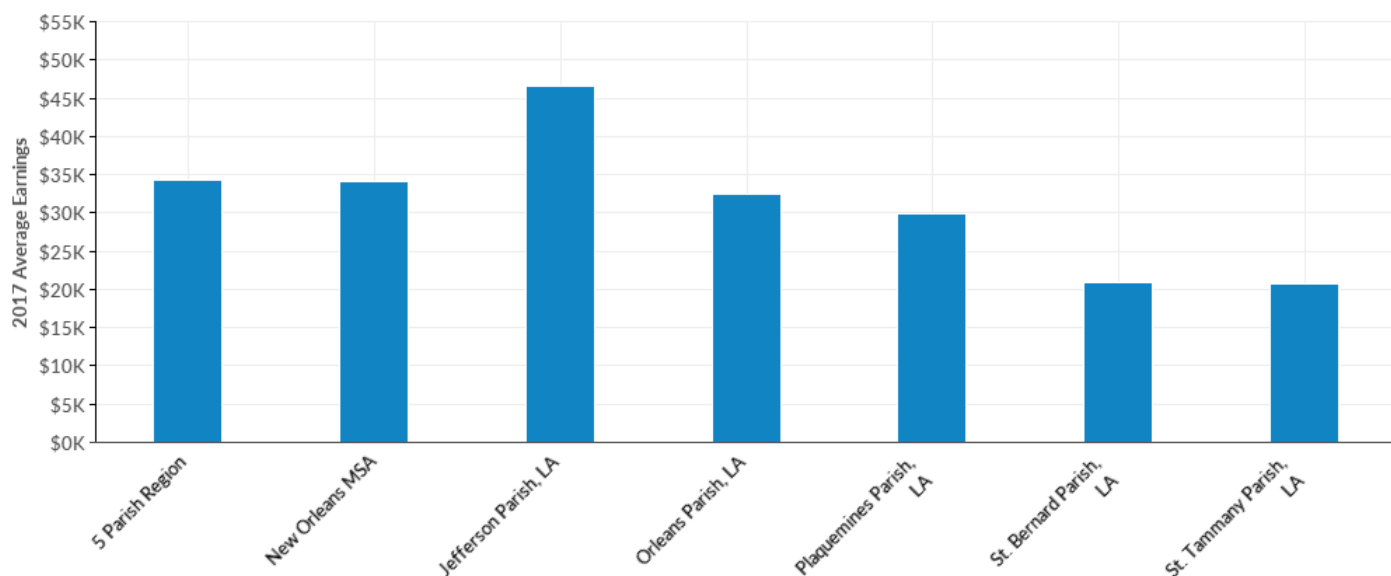


Industry	Description	5 Parish Region	New Orleans MSA	Jefferson Parish, LA	Orleans Parish, LA	Plaquemines Parish, LA	St. Bernard Parish, LA	St. Tammany Parish, LA
721199	All Other Traveler Accommodation	--	--	--	--	0%	0%	--
721310	Rooming and Boarding Houses, Dormitories, and Workers' Camps	289%	289%	-13%	--	--	0%	--
711212	Racetracks	274%	244%	13%	432%	0%	--	0%
721191	Bed-and-Breakfast Inns	200%	200%	--	89%	--	0%	--
711510	Independent Artists, Writers, and Performers	180%	183%	--	237%	0%	0%	200%
721211	RV (Recreational Vehicle) Parks and Campgrounds	150%	150%	--	--	0%	0%	44%
711120	Dance Companies	110%	110%	100%	--	0%	--	0%
713990	All Other Amusement and Recreation Industries	88%	84%	63%	178%	--	--	52%
713950	Bowling Centers	82%	82%	93%	123%	0%	0%	16%
722310	Food Service Contractors	58%	56%	14%	101%	-25%	--	161%
713110	Amusement and Theme Parks	--	--	0%	--	0%	0%	--
711310	Promoters of Performing Arts, Sports, and Similar Events with Facilities	49%	49%	13%	48%	0%	0%	--
722330	Mobile Food Services	47%	47%	--	250%	--	0%	-50%
	Total	25%	25%	9%	34%	-13%	29%	25%

Industry	Description	5 Parish Region	New Orleans MSA	Jefferson Parish, LA	Orleans Parish, LA	Plaquemines Parish, LA	St. Bernard Parish, LA	St. Tammany Parish, LA
722515	Snack and Nonalcoholic Beverage Bars	46%	45%	26%	73%	47%	188%	26%
722320	Caterers	37%	38%	39%	95%	--	--	-15%
722511	Full-Service Restaurants	34%	33%	15%	49%	9%	17%	30%
711211	Sports Teams and Clubs	31%	31%	86%	-90%	0%	0%	--
712110	Museums	27%	22%	--	25%	0%	0%	--
711219	Other Spectator Sports	21%	21%	-57%	56%	0%	0%	--
712130	Zoos and Botanical Gardens	21%	21%	0%	20%	0%	0%	--
722410	Drinking Places (Alcoholic Beverages)	17%	17%	-19%	31%	-57%	45%	-19%
721110	Hotels (except Casino Hotels) and Motels	17%	16%	9%	17%	-28%	177%	55%
713940	Fitness and Recreational Sports Centers	15%	13%	-5%	85%	--	--	11%
713910	Golf Courses and Country Clubs	12%	9%	-19%	18%	--	--	55%
713930	Marinas	10%	10%	--	24%	60%	--	--
711110	Theater Companies and Dinner Theaters	8%	8%	--	-7%	0%	0%	0%
712190	Nature Parks and Other Similar Institutions	--	--	0%	0%	0%	0%	--
713920	Skiing Facilities	0%	0%	0%	0%	0%	0%	0%
711130	Musical Groups and Artists	-3%	-3%	--	1%	0%	0%	--
721120	Casino Hotels	-4%	-4%	0%	-4%	0%	0%	0%
713210	Casinos (except Casino Hotels)	-8%	-8%	-8%	0%	0%	0%	0%
712120	Historical Sites	-17%	-6%	--	-21%	0%	0%	0%
713120	Amusement Arcades	-20%	-20%	-11%	--	0%	--	--
711320	Promoters of Performing Arts, Sports, and Similar Events without Facilities	-21%	-21%	-8%	-41%	0%	0%	--
713290	Other Gambling Industries	-21%	-14%	-7%	-42%	--	-42%	-56%
711410	Agents and Managers for Artists, Athletes, Entertainers, and Other Public Figures	-24%	-20%	--	--	0%	0%	--
	Total	25%	25%	9%	34%	-13%	29%	25%

Industry	Description	5 Parish Region	New Orleans MSA	Jefferson Parish, LA	Orleans Parish, LA	Plaquemines Parish, LA	St. Bernard Parish, LA	St. Tammany Parish, LA
721214	Recreational and Vacation Camps (except Campgrounds)	-38%	-38%	-63%	0%	0%	0%	--
711190	Other Performing Arts Companies	--	--	--	--	0%	0%	0%
722514	Cafeterias, Grill Buffets, and Buffets	-51%	-51%	-30%	-78%	0%	--	-52%
	Total	25%	25%	9%	34%	-13%	29%	25%

## Industry Breakdown - 2017 Average Earnings



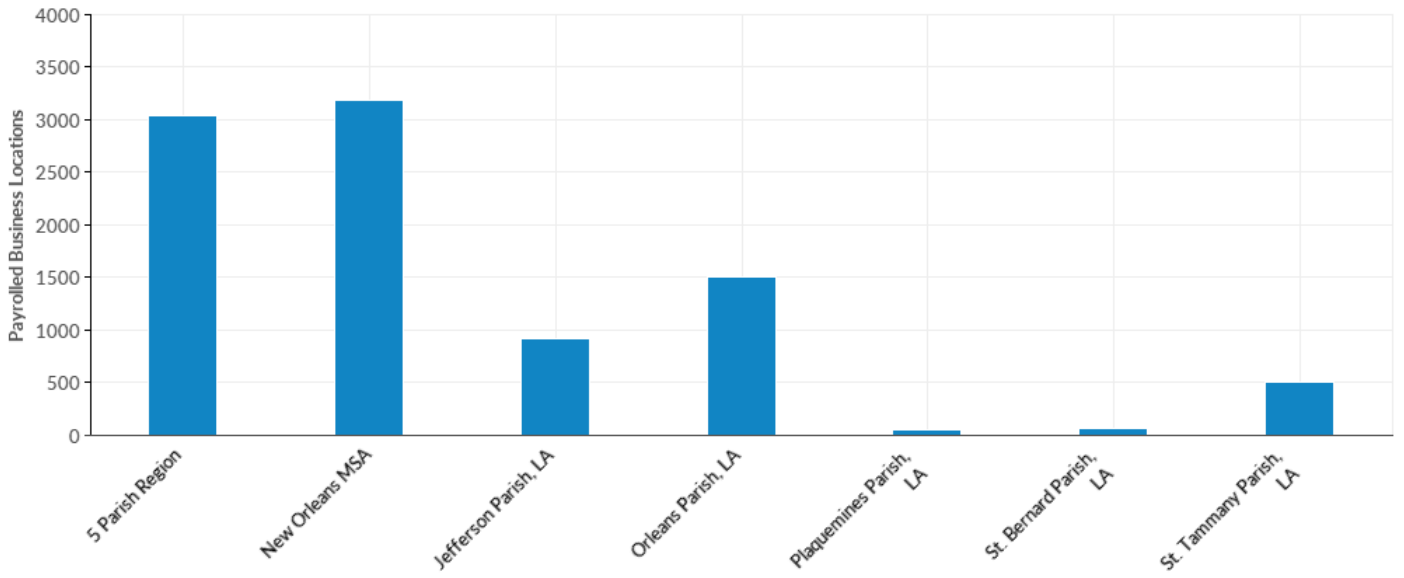
Industry	Description	5 Parish Region	New Orleans MSA	Jefferson Parish, LA	Orleans Parish, LA	Plaquemines Parish, LA	St. Bernard Parish, LA	St. Tammany Parish, LA
711211	Sports Teams and Clubs	\$637,889	\$637,889	\$657,673	\$162,590	\$0	\$0	--
711510	Independent Artists, Writers, and Performers	\$146,808	\$146,802	--	\$204,684	\$0	\$0	\$56,436
711320	Promoters of Performing Arts, Sports, and Similar Events without Facilities	\$68,598	\$68,532	\$111,836	\$74,861	\$0	\$0	\$19,669
712110	Museums	\$53,157	\$51,845	--	\$54,111	\$0	\$0	\$23,920
711410	Agents and Managers for Artists, Athletes, Entertainers, and Other Public Figures	\$52,068	\$52,074	--	--	\$0	\$0	--
711130	Musical Groups and Artists	\$48,775	\$48,806	--	\$49,303	\$0	\$0	--
711190	Other Performing Arts Companies	--	--	\$0	--	\$0	\$0	\$0
712120	Historical Sites	\$42,415	\$30,766	--	\$41,492	\$0	\$0	\$0
721110	Hotels (except Casino Hotels) and Motels	\$38,800	\$38,453	\$29,204	\$41,881	\$24,158	\$21,917	\$22,928
713290	Other Gambling Industries	\$38,319	\$36,520	\$43,173	\$20,538	--	\$33,917	\$13,356
721120	Casino Hotels	\$38,275	\$38,275	\$0	\$38,275	\$0	\$0	\$0
	Total	\$34,329	\$34,018	\$46,571	\$32,535	\$29,805	\$20,829	\$20,650



Industry	Description	5 Parish Region	New Orleans MSA	Jefferson Parish, LA	Orleans Parish, LA	Plaquemines Parish, LA	St. Bernard Parish, LA	St. Tammany Parish, LA
721310	Rooming and Boarding Houses, Dormitories, and Workers' Camps	\$37,259	\$37,104	\$51,987	\$37,884	\$24,308	\$0	--
712130	Zoos and Botanical Gardens	\$34,679	\$34,679	\$0	\$34,732	\$0	\$0	--
713210	Casinos (except Casino Hotels)	\$34,678	\$34,683	\$34,678	\$0	\$0	\$0	\$0
713930	Marinas	\$31,703	\$31,703	--	\$33,313	\$29,321	--	--
711120	Dance Companies	\$31,289	\$31,289	\$22,442	\$43,669	\$0	--	\$0
711110	Theater Companies and Dinner Theaters	\$30,848	\$30,848	\$26,940	\$31,906	\$0	\$0	\$0
722310	Food Service Contractors	\$30,515	\$30,497	\$39,901	\$25,699	\$50,509	--	\$24,989
713110	Amusement and Theme Parks	\$30,098	\$30,098	\$0	\$0	\$0	\$0	\$30,098
711219	Other Spectator Sports	\$29,345	\$29,345	\$29,542	\$29,503	\$0	\$0	\$25,660
711212	Racetracks	\$28,868	\$28,868	\$62,081	\$24,217	\$0	--	\$0
713910	Golf Courses and Country Clubs	\$28,491	\$27,772	\$22,493	\$33,701	--	--	\$28,019
722511	Full-Service Restaurants	\$25,531	\$25,370	\$22,425	\$29,192	\$17,879	\$16,860	\$20,696
713120	Amusement Arcades	\$24,711	\$24,711	\$18,922	\$18,061	\$0	\$61,139	--
722410	Drinking Places (Alcoholic Beverages)	\$24,273	\$24,097	\$20,312	\$25,243	\$25,225	\$24,822	\$18,250
711310	Promoters of Performing Arts, Sports, and Similar Events with Facilities	\$24,198	\$24,198	\$35,454	\$24,256	\$0	\$0	\$6,953
713950	Bowling Centers	\$24,082	\$24,082	\$19,117	\$34,496	\$0	\$0	\$20,132
712190	Nature Parks and Other Similar Institutions	--	--	\$0	\$0	\$0	\$0	--
722320	Caterers	\$23,500	\$23,400	\$18,646	\$29,365	--	--	\$21,112
721191	Bed-and-Breakfast Inns	\$23,164	\$23,164	\$17,360	\$25,889	--	\$0	--
721211	RV (Recreational Vehicle) Parks and Campgrounds	\$23,126	\$23,126	\$17,320	\$21,647	\$0	\$0	\$29,854
721199	All Other Traveler Accommodation	\$21,715	\$21,715	--	\$29,563	\$0	\$0	--
	Total	\$34,329	\$34,018	\$46,571	\$32,535	\$29,805	\$20,829	\$20,650

Industry	Description	5 Parish Region	New Orleans MSA	Jefferson Parish, LA	Orleans Parish, LA	Plaquemines Parish, LA	St. Bernard Parish, LA	St. Tammany Parish, LA
722514	Cafeterias, Grill Buffets, and Buffets	\$20,753	\$20,519	\$21,486	\$20,081	\$0	--	\$19,049
713990	All Other Amusement and Recreation Industries	\$20,706	\$20,712	\$23,309	\$16,808	--	\$15,564	\$20,085
722330	Mobile Food Services	\$20,352	\$20,352	\$20,290	\$18,286	--	\$0	\$25,392
713940	Fitness and Recreational Sports Centers	\$19,771	\$19,655	\$18,609	\$24,450	--	\$10,853	\$18,490
721214	Recreational and Vacation Camps (except Campgrounds)	\$18,432	\$18,673	\$14,556	\$0	\$0	\$0	\$21,835
722515	Snack and Nonalcoholic Beverage Bars	\$17,496	\$17,349	\$16,091	\$20,291	\$13,198	\$19,793	\$12,987
713920	Skiing Facilities	\$0	\$0	\$0	\$0	\$0	\$0	\$0
	Total	\$34,329	\$34,018	\$46,571	\$32,535	\$29,805	\$20,829	\$20,650

# Industry Breakdown - Payrolled Business Locations

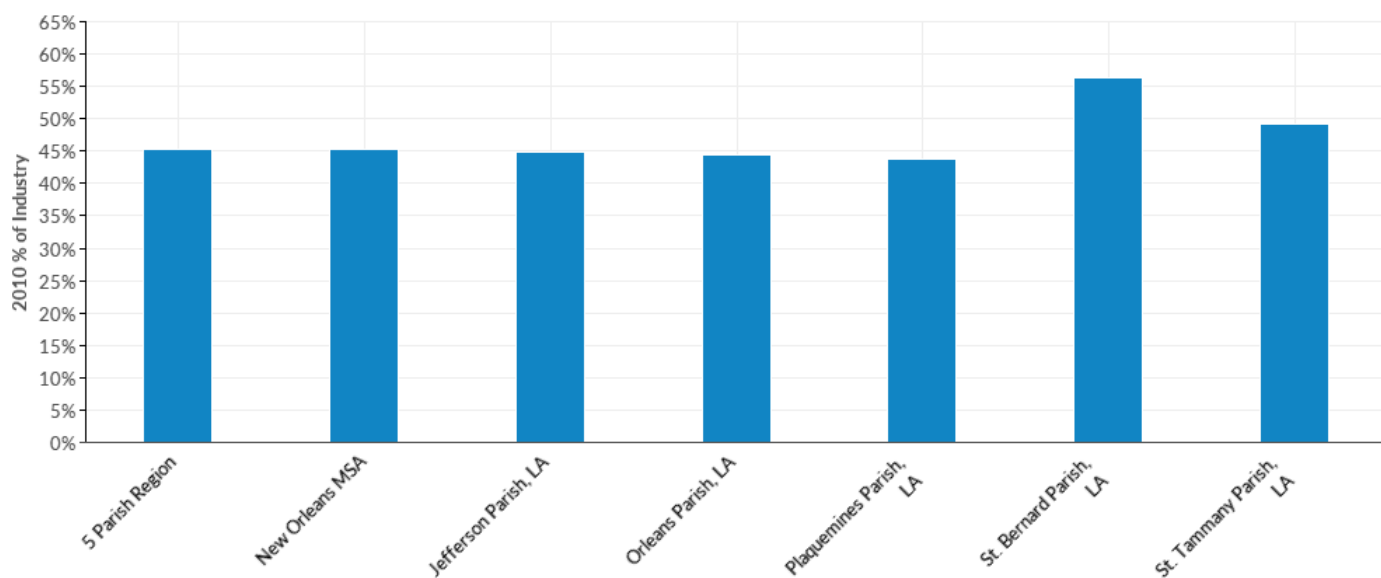


Industry	Description	5 Parish Region	New Orleans MSA	Jefferson Parish, LA	Orleans Parish, LA	Plaquemines Parish, LA	St. Bernard Parish, LA	St. Tammany Parish, LA
722511	Full-Service Restaurants	1,190	1,245	359	552	15	29	236
722410	Drinking Places (Alcoholic Beverages)	429	445	125	248	9	16	30
721110	Hotels (except Casino Hotels) and Motels	282	304	81	155	6	3	37
722515	Snack and Nonalcoholic Beverage Bars	282	293	92	129	4	6	50
713940	Fitness and Recreational Sports Centers	144	156	54	50	1	3	36
711510	Independent Artists, Writers, and Performers	100	101	16	70	0	0	14
722310	Food Service Contractors	80	81	21	46	2	1	10
722320	Caterers	79	80	37	28	2	1	11
713990	All Other Amusement and Recreation Industries	67	71	24	24	1	3	15
713290	Other Gambling Industries	49	57	30	7	2	4	6
722514	Cafeterias, Grill Buffets, and Buffets	35	37	10	13	0	2	11
711130	Musical Groups and Artists	33	34	2	28	0	0	2
711320	Promoters of Performing Arts, Sports, and Similar Events without Facilities	32	33	9	20	0	0	3
	<b>Total</b>	<b>3,047</b>	<b>3,193</b>	<b>916</b>	<b>1,502</b>	<b>50</b>	<b>73</b>	<b>507</b>

Industry	Description	5 Parish Region	New Orleans MSA	Jefferson Parish, LA	Orleans Parish, LA	Plaquemines Parish, LA	St. Bernard Parish, LA	St. Tammany Parish, LA
711219	Other Spectator Sports	27	27	6	18	0	0	3
722330	Mobile Food Services	22	22	6	10	1	0	5
721191	Bed-and-Breakfast Inns	20	20	1	17	1	0	1
711310	Promoters of Performing Arts, Sports, and Similar Events with Facilities	19	19	3	16	0	0	1
713910	Golf Courses and Country Clubs	19	23	5	4	1	1	8
712110	Museums	18	20	1	15	0	0	2
713930	Marinas	17	17	3	3	4	2	5
711410	Agents and Managers for Artists, Athletes, Entertainers, and Other Public Figures	14	16	2	8	0	0	4
721310	Rooming and Boarding Houses, Dormitories, and Workers' Camps	13	13	2	9	1	0	1
713120	Amusement Arcades	11	11	7	1	0	1	1
721211	RV (Recreational Vehicle) Parks and Campgrounds	9	9	1	3	0	0	5
711110	Theater Companies and Dinner Theaters	9	9	2	7	0	0	0
711211	Sports Teams and Clubs	9	9	5	1	0	0	3
721199	All Other Traveler Accommodation	7	7	0	6	0	0	1
713950	Bowling Centers	7	7	3	2	0	0	2
713210	Casinos (except Casino Hotels)	5	6	5	0	0	0	0
711190	Other Performing Arts Companies	4	4	0	4	0	0	0
711120	Dance Companies	4	4	2	1	0	1	0
711212	Racetracks	4	4	1	2	0	1	0
712120	Historical Sites	3	5	1	2	0	0	0
721214	Recreational and Vacation Camps (except Campgrounds)	2	3	2	0	0	0	1
712130	Zoos and Botanical Gardens	2	2	0	1	0	0	1
	Total	3,047	3,193	916	1,502	50	73	507

Industry	Description	5 Parish Region	New Orleans MSA	Jefferson Parish, LA	Orleans Parish, LA	Plaquemines Parish, LA	St. Bernard Parish, LA	St. Tammany Parish, LA
713110	Amusement and Theme Parks	2	2	0	0	0	0	2
712190	Nature Parks and Other Similar Institutions	1	1	0	0	0	0	1
721120	Casino Hotels	1	1	0	1	0	0	0
713920	Skiing Facilities	0	0	0	0	0	0	0
	Total	3,047	3,193	916	1,502	50	73	507

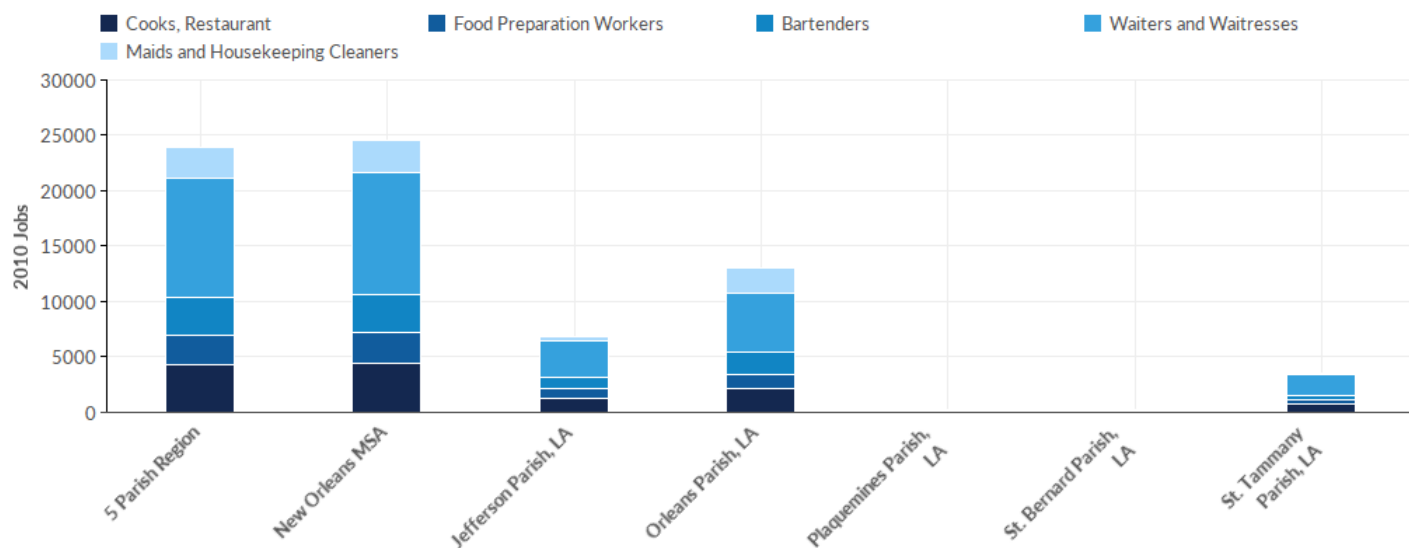
## Top Occupations - 2010 % of Industry



SOC Code	Description	5 Parish Region	New Orleans MSA	Jefferson Parish, LA	Orleans Parish, LA	Plaquemines Parish, LA	St. Bernard Parish, LA	St. Tammany Parish, LA
35-3031	Waiters and Waitresses	20%	20%	21%	18%	17%	27%	26%
35-2014	Cooks, Restaurant	8%	8%	9%	7%	6%	11%	11%
35-3011	Bartenders	6%	6%	6%	7%	7%	13%	5%
37-2012	Maids and Housekeeping Cleaners	5%	5%	3%	8%	5%	1%	2%
35-2021	Food Preparation Workers	5%	5%	6%	4%	9%	5%	6%
	Total	45%	45%	45%	44%	44%	56%	49%

Source: QCEW Employees - Emsi 2017.4 Class of Worker

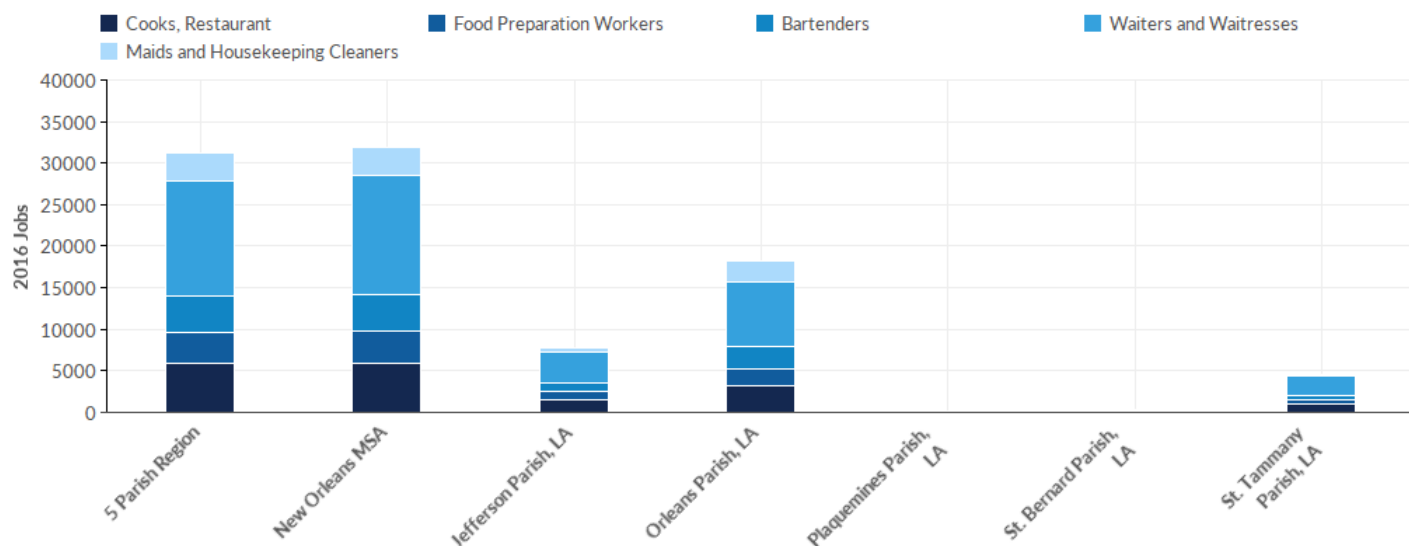
# Top Occupations - 2010 Jobs



SOC Code	Description	5 Parish Region	New Orleans MSA	Jefferson Parish, LA	Orleans Parish, LA	Plaquemines Parish, LA	St. Bernard Parish, LA	St. Tammany Parish, LA
35-3031	Waiters and Waitresses	10,704	10,983	3,254	5,370	101	144	1,835
35-2014	Cooks, Restaurant	4,333	4,446	1,308	2,176	36	57	756
35-3011	Bartenders	3,419	3,496	941	2,005	41	69	362
37-2012	Maids and Housekeeping Cleaners	2,881	2,956	476	2,249	33	<10	118
35-2021	Food Preparation Workers	2,647	2,711	899	1,225	53	29	440
	<b>Total</b>	<b>23,984</b>	<b>24,592</b>	<b>6,879</b>	<b>13,025</b>	<b>264</b>	<b>304</b>	<b>3,511</b>

Source: QCEW Employees - Emsi 2017.4 Class of Worker

# Top Occupations - 2016 Jobs

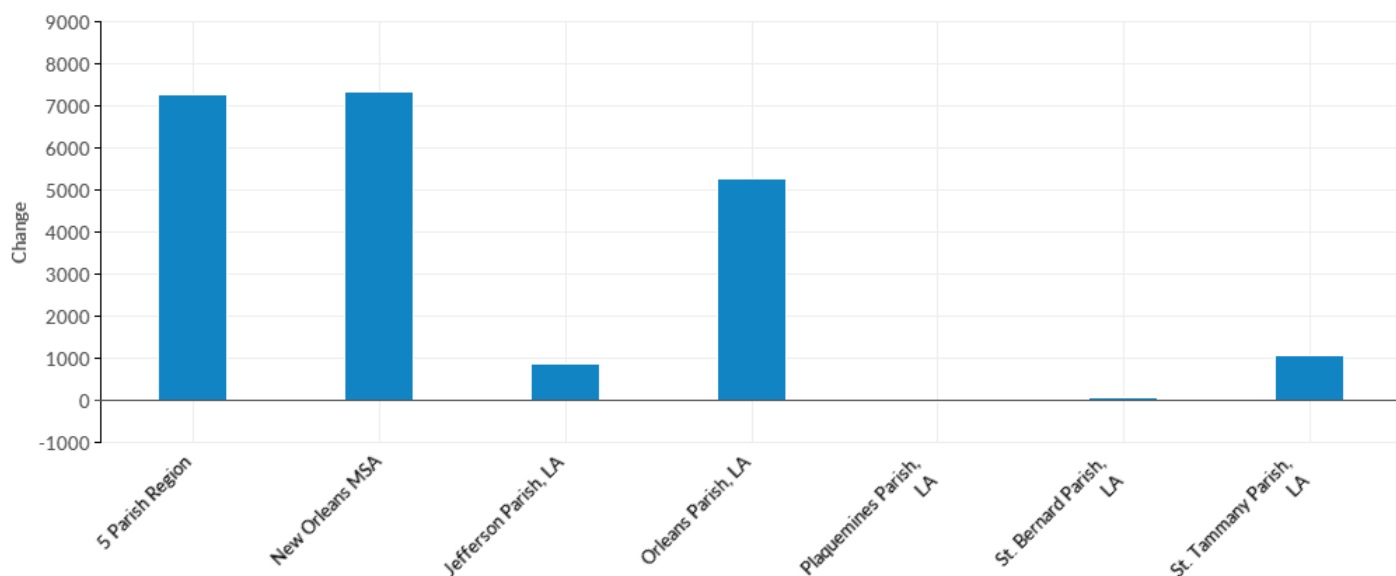


SOC Code	Description	5 Parish Region	New Orleans MSA	Jefferson Parish, LA	Orleans Parish, LA	Plaquemines Parish, LA	St. Bernard Parish, LA	St. Tammany Parish, LA
35-3031	Waiters and Waitresses	13,941	14,247	3,640	7,682	92	171	2,356
35-2014	Cooks, Restaurant	5,839	5,968	1,521	3,202	35	71	1,010
35-3011	Bartenders	4,355	4,444	980	2,800	29	94	452
35-2021	Food Preparation Workers	3,735	3,810	1,092	1,972	44	39	587
37-2012	Maids and Housekeeping Cleaners	3,392	3,465	525	2,647	29	11	180
	<b>Total</b>	<b>31,262</b>	<b>31,934</b>	<b>7,758</b>	<b>18,303</b>	<b>229</b>	<b>386</b>	<b>4,585</b>

Source: QCEW Employees - Emsi 2017.4 Class of Worker



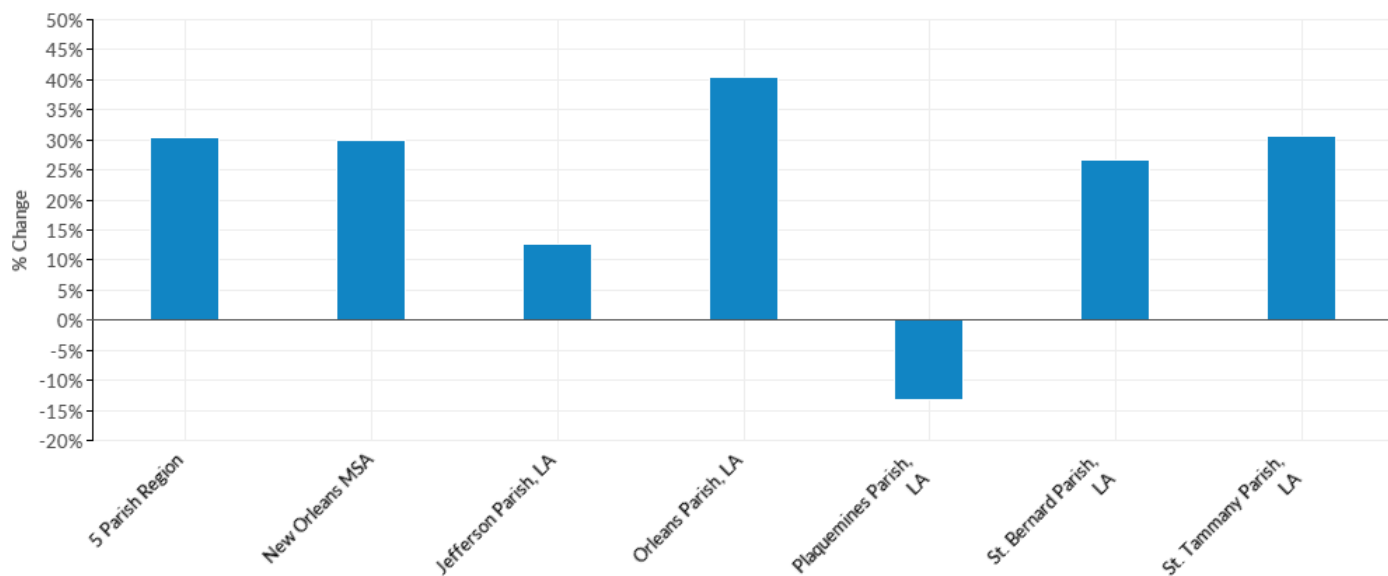
## Top Occupations - Change



SOC Code	Description	5 Parish Region	New Orleans MSA	Jefferson Parish, LA	Orleans Parish, LA	Plaquemines Parish, LA	St. Bernard Parish, LA	St. Tammany Parish, LA
35-3031	Waiters and Waitresses	3,237	3,264	386	2,312	-9	27	521
35-2014	Cooks, Restaurant	1,506	1,522	213	1,026	-1	14	254
35-2021	Food Preparation Workers	1,088	1,099	193	747	-9	10	147
35-3011	Bartenders	936	948	39	795	-12	25	90
37-2012	Maids and Housekeeping Cleaners	511	509	49	398	-4	--	62
	<b>Total</b>	<b>7,278</b>	<b>7,342</b>	<b>879</b>	<b>5,278</b>	<b>-35</b>	<b>82</b>	<b>1,074</b>

Source: QCEW Employees - Emsi 2017.4 Class of Worker

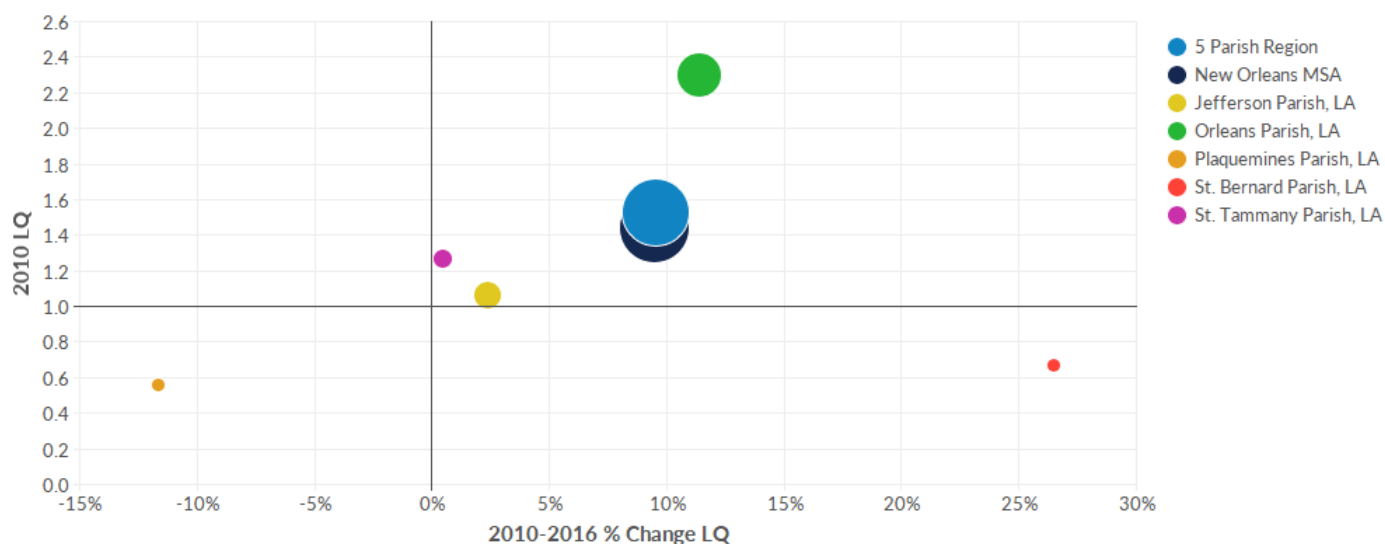
## Top Occupations - % Change



SOC Code	Description	5 Parish Region	New Orleans MSA	Jefferson Parish, LA	Orleans Parish, LA	Plaquemines Parish, LA	St. Bernard Parish, LA	St. Tammany Parish, LA
35-2021	Food Preparation Workers	41%	41%	21%	61%	-17%	34%	33%
35-2014	Cooks, Restaurant	35%	34%	16%	47%	-3%	25%	34%
35-3031	Waiters and Waitresses	30%	30%	12%	43%	-9%	19%	28%
35-3011	Bartenders	27%	27%	4%	40%	-29%	36%	25%
37-2012	Maids and Housekeeping Cleaners	18%	17%	10%	18%	-12%	--	53%
	Total	30%	30%	13%	41%	-13%	27%	31%

Source: QCEW Employees - Emsi 2017.4 Class of Worker

## Location Quotient Breakdown - 2010 National LQ



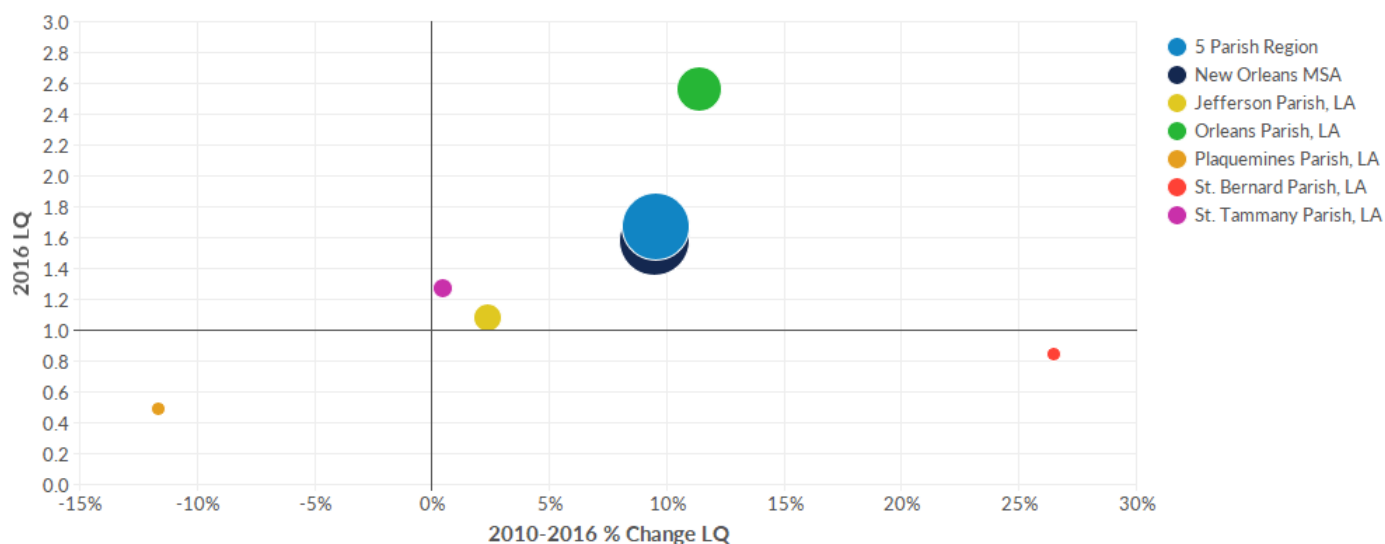
Industry	Description	5 Parish Region	New Orleans MSA	Jefferson Parish, LA	Orleans Parish, LA	Plaquemines Parish, LA	St. Bernard Parish, LA	St. Tammany Parish, LA
712130	Zoos and Botanical Gardens	5.70	5.26	0.00	15.51	0.00	0.00	0.00
711310	Promoters of Performing Arts, Sports, and Similar Events with Facilities	5.06	4.67	0.14	13.60	0.00	0.00	0.02
713210	Casinos (except Casino Hotels)	4.64	4.29	11.15	0.00	0.00	0.00	0.00
713290	Other Gambling Industries	3.71	3.69	5.72	1.21	1.03	19.13	2.50
722514	Cafeterias, Grill Buffets, and Buffets	2.90	2.70	3.06	2.74	0.00	0.00	3.82
722410	Drinking Places (Alcoholic Beverages)	2.88	2.70	1.39	5.50	1.20	3.58	0.95
711219	Other Spectator Sports	2.63	2.43	2.09	4.65	0.00	0.00	0.30
721120	Casino Hotels	2.53	2.34	0.00	6.89	0.00	0.00	0.00
711320	Promoters of Performing Arts, Sports, and Similar Events without Facilities	2.26	2.09	0.77	5.26	0.00	0.00	0.03
722330	Mobile Food Services	2.25	2.08	0.87	1.76	0.00	0.00	7.66
721110	Hotels (except Casino Hotels) and Motels	2.00	1.89	0.76	4.29	0.74	0.11	0.48
713120	Amusement Arcades	1.91	1.76	2.99	0.34	0.00	5.39	2.59
713930	Marinas	1.77	1.63	0.65	2.69	11.82	0.46	0.80
711211	Sports Teams and Clubs	1.77	1.63	2.87	1.51	0.00	0.00	0.11
	Total	1.53	1.45	1.06	2.30	0.56	0.67	1.27

Industry	Description	5 Parish Region	New Orleans MSA	Jefferson Parish, LA	Orleans Parish, LA	Plaquemines Parish, LA	St. Bernard Parish, LA	St. Tammany Parish, LA
712110	Museums	1.72	1.70	0.09	4.48	0.00	0.00	0.18
722310	Food Service Contractors	1.57	1.46	1.47	2.03	4.82	0.00	0.38
722320	Caterers	1.50	1.42	1.71	1.23	2.99	1.16	1.33
711130	Musical Groups and Artists	1.49	1.38	0.23	3.79	0.00	0.00	0.00
722511	Full-Service Restaurants	1.29	1.23	0.96	1.65	0.23	0.79	1.62
713940	Fitness and Recreational Sports Centers	1.27	1.22	1.31	0.47	0.01	0.20	3.37
711212	Racetracks	1.20	1.21	1.09	2.03	0.00	0.21	0.00
722515	Snack and Nonalcoholic Beverage Bars	1.16	1.11	1.05	1.22	0.36	0.62	1.52
712120	Historical Sites	0.80	1.47	0.00	2.17	0.00	0.00	0.00
721310	Rooming and Boarding Houses, Dormitories, and Workers' Camps	0.73	0.68	0.98	0.63	0.00	0.00	0.60
713990	All Other Amusement and Recreation Industries	0.71	0.68	1.02	0.40	0.03	0.26	0.81
721191	Bed-and-Breakfast Inns	0.70	0.65	0.02	1.80	1.01	0.00	0.00
711120	Dance Companies	0.60	0.55	0.88	0.63	0.00	0.00	0.00
713910	Golf Courses and Country Clubs	0.56	0.62	0.58	0.54	0.00	0.00	0.78
713950	Bowling Centers	0.55	0.51	0.65	0.44	0.00	0.00	0.77
711190	Other Performing Arts Companies	0.47	0.44	0.15	1.11	0.00	0.00	0.00
721214	Recreational and Vacation Camps (except Campgrounds)	0.42	0.39	0.92	0.00	0.00	0.00	0.23
711410	Agents and Managers for Artists, Athletes, Entertainers, and Other Public Figures	0.37	0.35	0.03	0.95	0.00	0.00	0.08
721211	RV (Recreational Vehicle) Parks and Campgrounds	0.33	0.30	0.17	0.23	0.00	0.00	1.08
711110	Theater Companies and Dinner Theaters	0.29	0.27	0.08	0.70	0.00	0.00	0.00
711510	Independent Artists, Writers, and Performers	0.24	0.22	0.10	0.32	0.00	0.00	0.49
	Total	1.53	1.45	1.06	2.30	0.56	0.67	1.27

Industry	Description	5 Parish Region	New Orleans MSA	Jefferson Parish, LA	Orleans Parish, LA	Plaquemines Parish, LA	St. Bernard Parish, LA	St. Tammany Parish, LA
721199	All Other Traveler Accommodation	0.08	0.07	0.12	0.07	0.00	0.00	0.00
713110	Amusement and Theme Parks	0.02	0.02	0.00	0.04	0.00	0.00	0.00
712190	Nature Parks and Other Similar Institutions	0.01	0.01	0.00	0.00	0.00	0.00	0.07
713920	Skiing Facilities	0.00	0.00	0.00	0.00	0.00	0.00	0.00
	Total	1.53	1.45	1.06	2.30	0.56	0.67	1.27

Source: QCEW Employees - Emsi 2017.4 Class of Worker

## Location Quotient Breakdown - 2016 National LQ



Industry	Description	5 Parish Region	New Orleans MSA	Jefferson Parish, LA	Orleans Parish, LA	Plaquemines Parish, LA	St. Bernard Parish, LA	St. Tammany Parish, LA
712130	Zoos and Botanical Gardens	5.66	5.25	0.00	14.47	0.00	0.00	0.28
711310	Promoters of Performing Arts, Sports, and Similar Events with Facilities	5.58	5.18	0.12	14.17	0.00	0.00	0.23
711212	Racetracks	5.49	5.09	1.61	12.53	0.00	0.27	0.00
713210	Casinos (except Casino Hotels)	4.32	4.02	11.15	0.00	0.00	0.00	0.00
711219	Other Spectator Sports	3.36	3.11	1.02	7.28	0.00	0.00	0.77
722410	Drinking Places (Alcoholic Beverages)	3.12	2.94	1.11	6.31	0.56	5.36	0.66
713290	Other Gambling Industries	3.01	3.29	5.84	0.69	1.19	12.74	1.04
721310	Rooming and Boarding Houses, Dormitories, and Workers' Camps	2.65	2.46	0.91	4.99	10.98	0.00	0.37
721120	Casino Hotels	2.44	2.26	0.00	6.28	0.00	0.00	0.00
721110	Hotels (except Casino Hotels) and Motels	2.14	2.03	0.82	4.36	0.57	0.31	0.63
722310	Food Service Contractors	2.06	1.91	1.50	3.22	3.47	0.03	0.75
721191	Bed-and-Breakfast Inns	1.92	1.78	1.48	2.94	7.67	0.00	0.02
711211	Sports Teams and Clubs	1.91	1.77	4.74	0.12	0.00	0.00	0.11
722320	Caterers	1.77	1.69	2.19	1.94	0.06	0.07	0.89
	Total	1.67	1.58	1.09	2.56	0.49	0.85	1.27

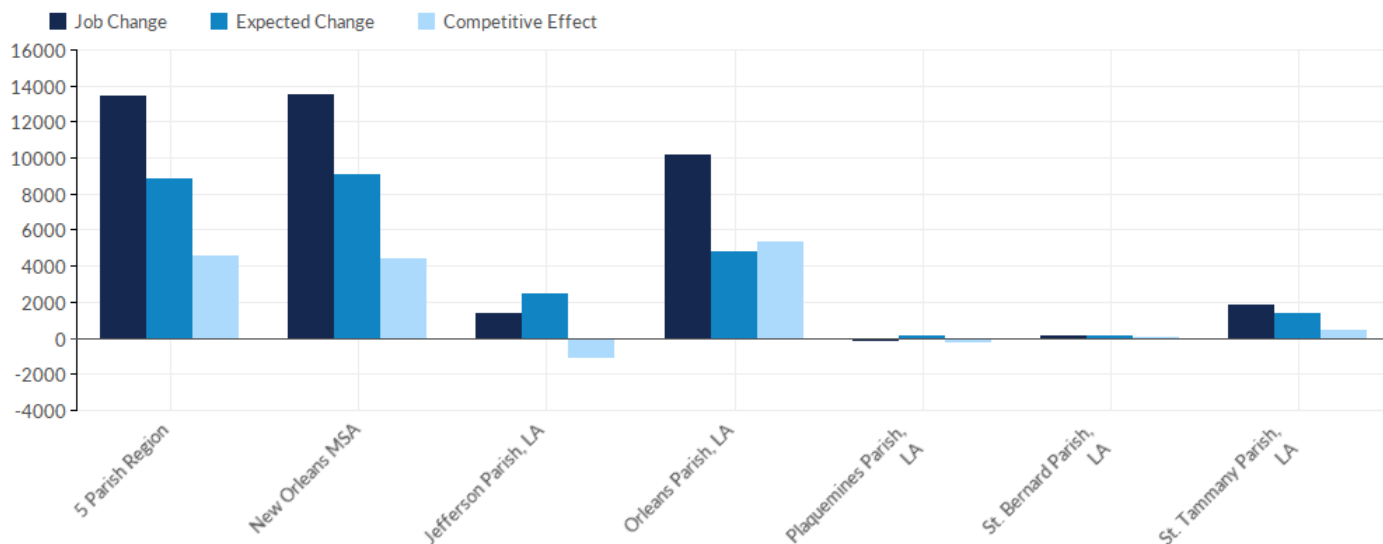
Industry	Description	5 Parish Region	New Orleans MSA	Jefferson Parish, LA	Orleans Parish, LA	Plaquemines Parish, LA	St. Bernard Parish, LA	St. Tammany Parish, LA
712110	Museums	1.76	1.69	0.02	4.32	0.00	0.00	0.46
713930	Marinas	1.72	1.59	0.15	2.80	19.38	0.91	0.20
722514	Cafeterias, Grill Buffets, and Buffets	1.68	1.58	2.74	0.66	0.00	0.06	2.00
722511	Full-Service Restaurants	1.50	1.42	1.02	2.02	0.25	0.89	1.66
722330	Mobile Food Services	1.49	1.38	0.42	2.67	0.52	0.00	1.56
711130	Musical Groups and Artists	1.46	1.36	0.08	3.65	0.00	0.00	0.06
722515	Snack and Nonalcoholic Beverage Bars	1.25	1.19	1.05	1.48	0.46	1.48	1.30
713940	Fitness and Recreational Sports Centers	1.24	1.18	1.13	0.69	0.13	0.62	2.91
711320	Promoters of Performing Arts, Sports, and Similar Events without Facilities	1.23	1.15	0.52	2.05	0.00	0.00	1.35
713120	Amusement Arcades	1.22	1.13	2.29	0.39	0.00	7.60	0.14
713950	Bowling Centers	1.07	0.99	1.41	0.95	0.00	0.00	0.84
711120	Dance Companies	1.03	0.95	1.52	1.08	0.00	0.97	0.00
713990	All Other Amusement and Recreation Industries	1.00	0.94	1.34	0.79	0.07	1.01	0.85
721211	RV (Recreational Vehicle) Parks and Campgrounds	0.72	0.67	0.78	0.51	0.00	0.00	1.25
712120	Historical Sites	0.69	1.43	0.14	1.65	0.00	0.00	0.00
711510	Independent Artists, Writers, and Performers	0.62	0.58	0.13	0.92	0.00	0.00	1.22
713910	Golf Courses and Country Clubs	0.60	0.64	0.48	0.57	0.29	0.03	1.05
711110	Theater Companies and Dinner Theaters	0.29	0.27	0.19	0.56	0.00	0.00	0.00
721199	All Other Traveler Accommodation	0.28	0.26	0.00	0.31	0.00	0.00	0.90
721214	Recreational and Vacation Camps (except Campgrounds)	0.22	0.20	0.30	0.00	0.00	0.00	0.58
711190	Other Performing Arts Companies	0.21	0.20	0.00	0.55	0.00	0.00	0.00
	Total	1.67	1.58	1.09	2.56	0.49	0.85	1.27

Industry	Description	5 Parish Region	New Orleans MSA	Jefferson Parish, LA	Orleans Parish, LA	Plaquemines Parish, LA	St. Bernard Parish, LA	St. Tammany Parish, LA
711410	Agents and Managers for Artists, Athletes, Entertainers, and Other Public Figures	0.19	0.20	0.02	0.21	0.00	0.00	0.58
712190	Nature Parks and Other Similar Institutions	0.11	0.10	0.00	0.00	0.00	0.00	0.63
713110	Amusement and Theme Parks	0.02	0.02	0.00	0.00	0.00	0.00	0.12
713920	Skiing Facilities	0.00	0.00	0.00	0.00	0.00	0.00	0.00
	Total	1.67	1.58	1.09	2.56	0.49	0.85	1.27

Source: QCEW Employees - Emsi 2017.4 Class of Worker



## Shift Share Breakdown - Job Change



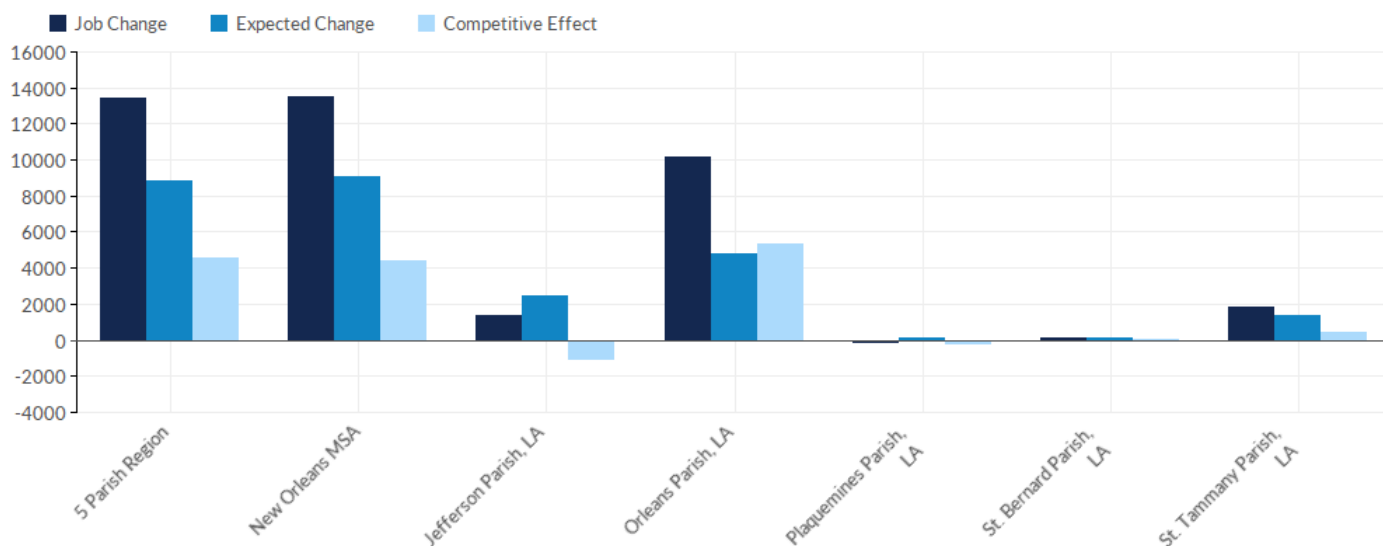
Industry	Description	5 Parish Region	New Orleans MSA	Jefferson Parish, LA	Orleans Parish, LA	Plaquemines Parish, LA	St. Bernard Parish, LA	St. Tammany Parish, LA
722511	Full-Service Restaurants	7,112	7,184	943	4,836	10	49	1,275
721110	Hotels (except Casino Hotels) and Motels	1,691	1,678	148	1,335	-32	23	217
722310	Food Service Contractors	1,246	1,233	119	1,044	-53	1	135
722515	Snack and Nonalcoholic Beverage Bars	891	895	190	543	9	45	105
711310	Promoters of Performing Arts, Sports, and Similar Events with Facilities	639	639	1	624	0	0	14
722410	Drinking Places (Alcoholic Beverages)	620	626	-138	774	-26	46	-36
711212	Racetracks	449	435	8	441	0	0	0
713940	Fitness and Recreational Sports Centers	335	313	-53	258	7	19	104
722320	Caterers	293	306	146	225	-48	-13	-17
713990	All Other Amusement and Recreation Industries	289	287	125	121	1	10	32
712130	Zoos and Botanical Gardens	136	136	0	129	0	0	7
711211	Sports Teams and Clubs	135	135	259	-126	0	0	2
712110	Museums	122	110	-8	111	0	0	19
713950	Bowling Centers	116	116	63	48	0	0	4
	<b>Total</b>	<b>13,427</b>	<b>13,480</b>	<b>1,405</b>	<b>10,125</b>	<b>-76</b>	<b>159</b>	<b>1,814</b>

Industry	Description	5 Parish Region	New Orleans MSA	Jefferson Parish, LA	Orleans Parish, LA	Plaquemines Parish, LA	St. Bernard Parish, LA	St. Tammany Parish, LA
713910	Golf Courses and Country Clubs	83	75	-55	43	10	1	84
721310	Rooming and Boarding Houses, Dormitories, and Workers' Camps	81	81	-1	71	12	0	-1
721191	Bed-and-Breakfast Inns	74	74	32	31	10	0	0
711510	Independent Artists, Writers, and Performers	72	73	2	45	0	0	26
721211	RV (Recreational Vehicle) Parks and Campgrounds	45	45	25	13	0	0	7
711219	Other Spectator Sports	42	42	-38	74	0	0	6
722330	Mobile Food Services	29	29	0	45	1	0	-17
711120	Dance Companies	22	22	12	9	0	1	0
713930	Marinas	19	19	-22	26	24	1	-10
721199	All Other Traveler Accommodation	11	11	-2	5	0	0	8
711110	Theater Companies and Dinner Theaters	5	5	10	-4	0	0	0
713110	Amusement and Theme Parks	5	5	0	-9	0	0	14
712190	Nature Parks and Other Similar Institutions	4	4	0	0	0	0	4
713920	Skiing Facilities	0	0	0	0	0	0	0
711190	Other Performing Arts Companies	-6	-6	-2	-4	0	0	0
711130	Musical Groups and Artists	-6	-6	-8	1	0	0	1
712120	Historical Sites	-6	-5	3	-9	0	0	0
711410	Agents and Managers for Artists, Athletes, Entertainers, and Other Public Figures	-7	-5	0	-16	0	0	9
721214	Recreational and Vacation Camps (except Campgrounds)	-16	-16	-25	0	0	0	9
713120	Amusement Arcades	-25	-25	-9	4	0	5	-25
711320	Promoters of Performing Arts, Sports, and Similar Events without Facilities	-38	-38	-2	-62	0	0	27
	Total	13,427	13,480	1,405	10,125	-76	159	1,814

Industry	Description	5 Parish Region	New Orleans MSA	Jefferson Parish, LA	Orleans Parish, LA	Plaquemines Parish, LA	St. Bernard Parish, LA	St. Tammany Parish, LA
721120	Casino Hotels	-93	-93	0	-93	0	0	0
713210	Casinos (except Casino Hotels)	-108	-105	-108	0	0	0	0
713290	Other Gambling Industries	-121	-85	-28	-29	0	-29	-35
722514	Cafeterias, Grill Buffets, and Buffets	-714	-713	-181	-379	0	1	-154
	Total	13,427	13,480	1,405	10,125	-76	159	1,814

Source: QCEW Employees - Emsi 2017.4 Class of Worker

## Shift Share Breakdown - Expected Change



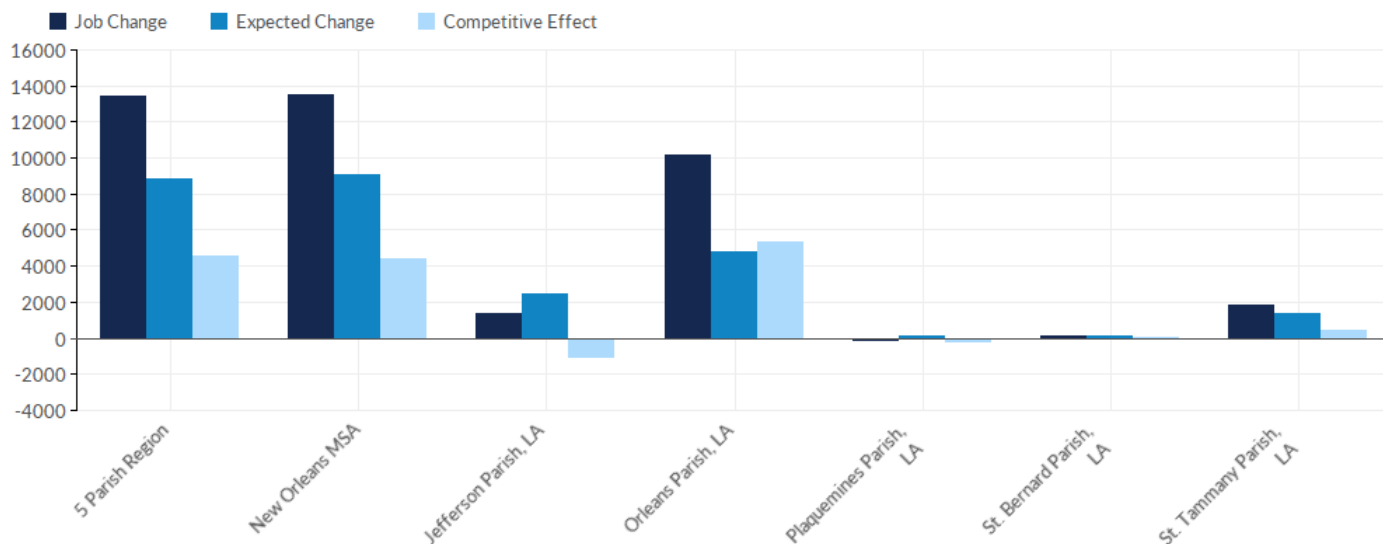
Industry	Description	5 Parish Region	New Orleans MSA	Jefferson Parish, LA	Orleans Parish, LA	Plaquemines Parish, LA	St. Bernard Parish, LA	St. Tammany Parish, LA
722511	Full-Service Restaurants	4,032	4,137	1,246	1,891	22	57	816
721110	Hotels (except Casino Hotels) and Motels	1,232	1,265	195	974	14	2	48
722515	Snack and Nonalcoholic Beverage Bars	756	785	285	293	7	9	161
722310	Food Service Contractors	515	520	201	245	49	0	20
711310	Promoters of Performing Arts, Sports, and Similar Events with Facilities	511	511	6	504	0	0	0
713940	Fitness and Recreational Sports Centers	479	497	206	65	0	2	206
722410	Drinking Places (Alcoholic Beverages)	411	418	83	289	5	12	22
712130	Zoos and Botanical Gardens	166	166	0	166	0	0	0
722320	Caterers	157	161	75	47	10	3	23
713990	All Other Amusement and Recreation Industries	126	131	75	26	0	1	23
712110	Museums	124	134	3	119	0	0	2
711211	Sports Teams and Clubs	109	109	74	34	0	0	1
711320	Promoters of Performing Arts, Sports, and Similar Events without Facilities	86	87	12	74	0	0	0
	<b>Total</b>	<b>8,857</b>	<b>9,078</b>	<b>2,480</b>	<b>4,817</b>	<b>117</b>	<b>88</b>	<b>1,357</b>

Industry	Description	5 Parish Region	New Orleans MSA	Jefferson Parish, LA	Orleans Parish, LA	Plaquemines Parish, LA	St. Bernard Parish, LA	St. Tammany Parish, LA
722330	Mobile Food Services	79	79	13	23	1	0	44
721120	Casino Hotels	73	73	0	73	0	0	0
713910	Golf Courses and Country Clubs	55	65	23	19	0	0	12
713120	Amusement Arcades	34	34	22	2	0	2	8
713930	Marinas	32	32	5	18	7	0	2
713210	Casinos (except Casino Hotels)	29	29	29	0	0	0	0
711410	Agents and Managers for Artists, Athletes, Entertainers, and Other Public Figures	12	12	0	11	0	0	0
721214	Recreational and Vacation Camps (except Campgrounds)	10	10	9	0	0	0	1
711110	Theater Companies and Dinner Theaters	8	8	1	7	0	0	0
711510	Independent Artists, Writers, and Performers	5	5	1	3	0	0	2
721211	RV (Recreational Vehicle) Parks and Campgrounds	5	5	1	1	0	0	3
711120	Dance Companies	5	5	3	2	0	0	0
721191	Bed-and-Breakfast Inns	5	5	0	5	0	0	0
711130	Musical Groups and Artists	4	4	0	4	0	0	0
721310	Rooming and Boarding Houses, Dormitories, and Workers' Camps	3	3	2	1	0	0	0
713290	Other Gambling Industries	2	2	1	0	0	0	0
713110	Amusement and Theme Parks	2	2	0	2	0	0	0
711190	Other Performing Arts Companies	2	2	0	1	0	0	0
721199	All Other Traveler Accommodation	1	1	1	0	0	0	0
712120	Historical Sites	0	0	0	0	0	0	0
712190	Nature Parks and Other Similar Institutions	0	0	0	0	0	0	0
713920	Skiing Facilities	0	0	0	0	0	0	0
	Total	8,857	9,078	2,480	4,817	117	88	1,357

Industry	Description	5 Parish Region	New Orleans MSA	Jefferson Parish, LA	Orleans Parish, LA	Plaquemines Parish, LA	St. Bernard Parish, LA	St. Tammany Parish, LA
713950	Bowling Centers	-3	-3	-1	-1	0	0	-1
711219	Other Spectator Sports	-5	-5	-2	-3	0	0	0
711212	Racetracks	-26	-28	-10	-16	0	0	0
722514	Cafeterias, Grill Buffets, and Buffets	-181	-182	-79	-63	0	0	-39
	Total	8,857	9,078	2,480	4,817	117	88	1,357

Source: QCEW Employees - Emsi 2017.4 Class of Worker

## Shift Share Breakdown - Competitive Effect



Industry	Description	5 Parish Region	New Orleans MSA	Jefferson Parish, LA	Orleans Parish, LA	Plaquemines Parish, LA	St. Bernard Parish, LA	St. Tammany Parish, LA
722511	Full-Service Restaurants	3,080	3,047	-303	2,945	-13	-8	459
722310	Food Service Contractors	731	713	-82	799	-102	1	115
711212	Racetracks	475	463	18	457	0	0	0
721110	Hotels (except Casino Hotels) and Motels	459	413	-47	361	-47	22	169
722410	Drinking Places (Alcoholic Beverages)	209	208	-221	485	-32	34	-58
713990	All Other Amusement and Recreation Industries	164	156	50	96	0	9	9
722515	Snack and Nonalcoholic Beverage Bars	136	110	-95	250	1	35	-56
722320	Caterers	135	145	71	178	-58	-16	-40
711310	Promoters of Performing Arts, Sports, and Similar Events with Facilities	128	128	-4	120	0	0	13
713950	Bowling Centers	118	118	64	49	0	0	5
721310	Rooming and Boarding Houses, Dormitories, and Workers' Camps	78	78	-3	70	12	0	-1
721191	Bed-and-Breakfast Inns	69	69	32	26	10	0	0
711510	Independent Artists, Writers, and Performers	67	68	1	42	0	0	24
	Total	4,570	4,402	-1,075	5,308	-193	70	457

Industry	Description	5 Parish Region	New Orleans MSA	Jefferson Parish, LA	Orleans Parish, LA	Plaquemines Parish, LA	St. Bernard Parish, LA	St. Tammany Parish, LA
711219	Other Spectator Sports	47	47	-36	77	0	0	6
721211	RV (Recreational Vehicle) Parks and Campgrounds	40	40	24	12	0	0	4
713910	Golf Courses and Country Clubs	28	10	-78	24	10	1	72
711211	Sports Teams and Clubs	26	26	186	-160	0	0	0
711120	Dance Companies	17	17	9	7	0	1	0
721199	All Other Traveler Accommodation	10	10	-3	5	0	0	8
712190	Nature Parks and Other Similar Institutions	4	4	0	0	0	0	4
713110	Amusement and Theme Parks	3	3	0	-11	0	0	14
713920	Skiing Facilities	0	0	0	0	0	0	0
712110	Museums	-2	-24	-11	-8	0	0	17
711110	Theater Companies and Dinner Theaters	-2	-2	9	-11	0	0	0
712120	Historical Sites	-7	-5	3	-9	0	0	0
711190	Other Performing Arts Companies	-7	-7	-2	-6	0	0	0
711130	Musical Groups and Artists	-10	-10	-8	-3	0	0	1
713930	Marinas	-13	-13	-27	8	17	1	-12
711410	Agents and Managers for Artists, Athletes, Entertainers, and Other Public Figures	-19	-17	0	-27	0	0	9
721214	Recreational and Vacation Camps (except Campgrounds)	-26	-26	-34	0	0	0	8
712130	Zoos and Botanical Gardens	-30	-30	0	-37	0	0	7
722330	Mobile Food Services	-51	-51	-13	22	0	0	-61
713120	Amusement Arcades	-60	-60	-31	2	0	2	-32
713290	Other Gambling Industries	-123	-87	-29	-29	0	-29	-36
711320	Promoters of Performing Arts, Sports, and Similar Events without Facilities	-124	-124	-15	-136	0	0	26
713210	Casinos (except Casino Hotels)	-137	-134	-137	0	0	0	0
	Total	4,570	4,402	-1,075	5,308	-193	70	457



Industry	Description	5 Parish Region	New Orleans MSA	Jefferson Parish, LA	Orleans Parish, LA	Plaquemines Parish, LA	St. Bernard Parish, LA	St. Tammany Parish, LA
713940	Fitness and Recreational Sports Centers	-144	-184	-259	194	7	17	-102
721120	Casino Hotels	-166	-166	0	-166	0	0	0
722514	Cafeterias, Grill Buffets, and Buffets	-533	-531	-102	-317	0	1	-115
	Total	4,570	4,402	-1,075	5,308	-193	70	457

Source: QCEW Employees - Emsi 2017.4 Class of Worker

# Appendix A - Industries

Code	Description
711110	Theater Companies and Dinner Theaters
711120	Dance Companies
711130	Musical Groups and Artists
711190	Other Performing Arts Companies
711211	Sports Teams and Clubs
711212	Racetracks
711219	Other Spectator Sports
711310	Promoters of Performing Arts, Sports, and Similar Events with Facilities
711320	Promoters of Performing Arts, Sports, and Similar Events without Facilities
711410	Agents and Managers for Artists, Athletes, Entertainers, and Other Public Figures
711510	Independent Artists, Writers, and Performers
712110	Museums
712120	Historical Sites
712130	Zoos and Botanical Gardens
712190	Nature Parks and Other Similar Institutions
713110	Amusement and Theme Parks
713120	Amusement Arcades
713210	Casinos (except Casino Hotels)
713290	Other Gambling Industries
713910	Golf Courses and Country Clubs
713920	Skiing Facilities
713930	Marinas
713940	Fitness and Recreational Sports Centers
713950	Bowling Centers
713990	All Other Amusement and Recreation Industries
721110	Hotels (except Casino Hotels) and Motels
721120	Casino Hotels
721191	Bed-and-Breakfast Inns
721199	All Other Traveler Accommodation

Code	Description
721211	RV (Recreational Vehicle) Parks and Campgrounds
721214	Recreational and Vacation Camps (except Campgrounds)
721310	Rooming and Boarding Houses, Dormitories, and Workers' Camps
722310	Food Service Contractors
722320	Caterers
722330	Mobile Food Services
722410	Drinking Places (Alcoholic Beverages)
722511	Full-Service Restaurants
722514	Cafeterias, Grill Buffets, and Buffets
722515	Snack and Nonalcoholic Beverage Bars

# Appendix B - Data Sources and Calculations

## Industry Data

Emsi industry data have various sources depending on the class of worker. (1) For QCEW Employees, Emsi primarily uses the QCEW (Quarterly Census of Employment and Wages), with supplemental estimates from County Business Patterns. (2) Non-QCEW employees data are based on a number of sources including QCEW, Current Employment Statistics, County Business Patterns, BEA State and Local Personal Income reports, the National Industry-Occupation Employment Matrix (NIOEM), the American Community Survey, and Railroad Retirement Board statistics. (3) Self-Employed and Extended Proprietor classes of worker data are primarily based on the American Community Survey, Nonemployer Statistics, and BEA State and Local Personal Income Reports. Projections for QCEW and Non-QCEW Employees are informed by NIOEM and long-term industry projections published by individual states.

## Staffing Patterns Data

The staffing pattern data in this report are compiled from several sources using a specialized process. For QCEW and Non-QCEW Employees classes of worker, sources include Occupational Employment Statistics, the National Industry-Occupation Employment Matrix, and the American Community Survey. For the Self-Employed and Extended Proprietors classes of worker, the primary source is the American Community Survey, with a small amount of information from Occupational Employment Statistics.

## State Data Sources

This report uses state data from the following agencies: Louisiana Department of Labor