

Regional Comparison by Industry

Comparing International Trade across 7 Regions

Emsi Q4 2017 Data Set

December 2017

Regional Planning Commission



10 Veterans Blvd.
New Orleans, Louisiana 70124

Parameters

Industries

43 items selected. See Appendix A for details.

Region

Code	Description	Level
Group	5 Parish Region	FIPS
Group	New Orleans MSA	FIPS
22051	Jefferson Parish, LA	FIPS
22071	Orleans Parish, LA	FIPS
22075	Plaquemines Parish, LA	FIPS
22087	St. Bernard Parish, LA	FIPS
22103	St. Tammany Parish, LA	FIPS

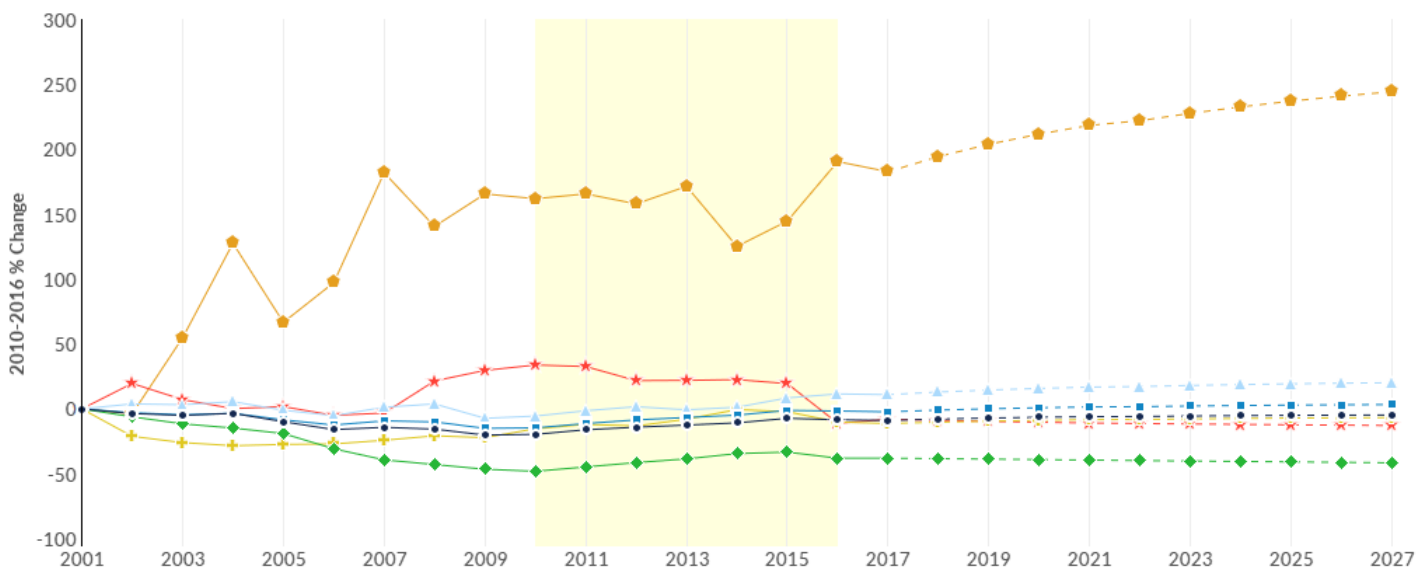
Timeframe

2010 - 2016

Datarun

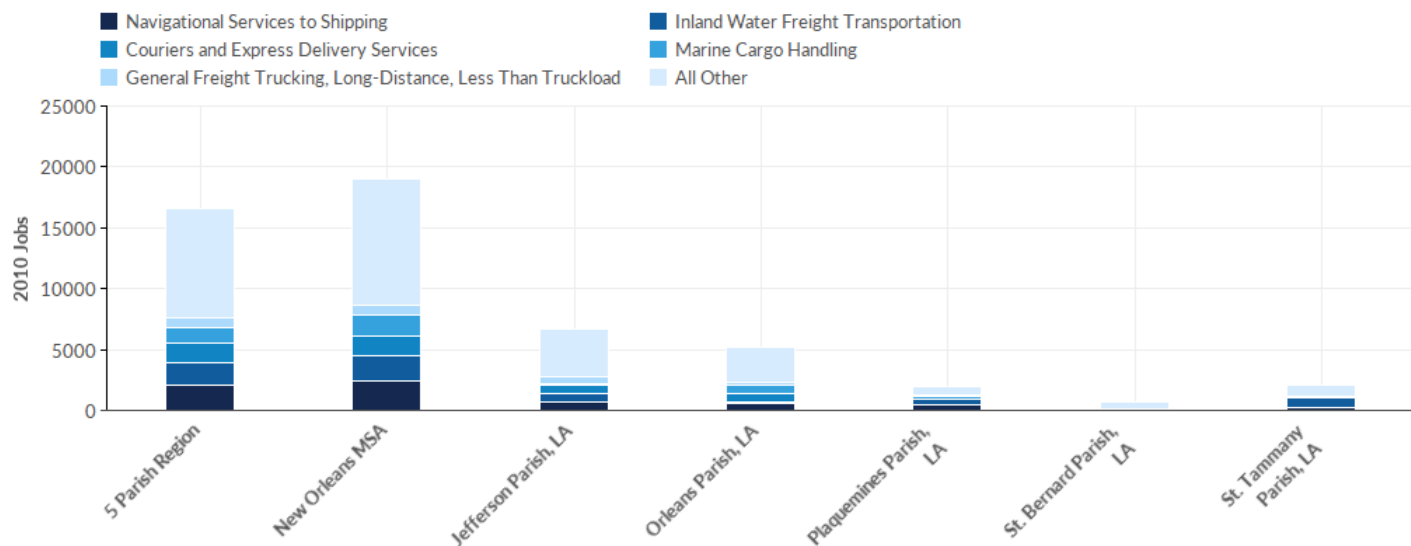
2017.4 - QCEW Employees

Industry Change Summary



Region	2010 Jobs	2016 Jobs	Change	% Change	2017 Average Earnings	2017 Payrolled Business Locations
● 5 Parish Region	16,569	18,886	2,317	14%	\$70,014	979
■ New Orleans MSA	18,970	21,855	2,885	15%	\$71,461	1,100
▲ Jefferson Parish, LA	6,738	7,956	1,218	18%	\$65,215	447
◆ Orleans Parish, LA	5,129	6,130	1,001	20%	\$64,903	240
+ Plaquemines Parish, LA	1,921	2,039	118	6%	\$80,802	88
★ St. Bernard Parish, LA	726	483	-243	-33%	\$64,343	31
◆ St. Tammany Parish, LA	2,054	2,279	225	11%	\$92,761	174

Industry Breakdown - 2010 Jobs

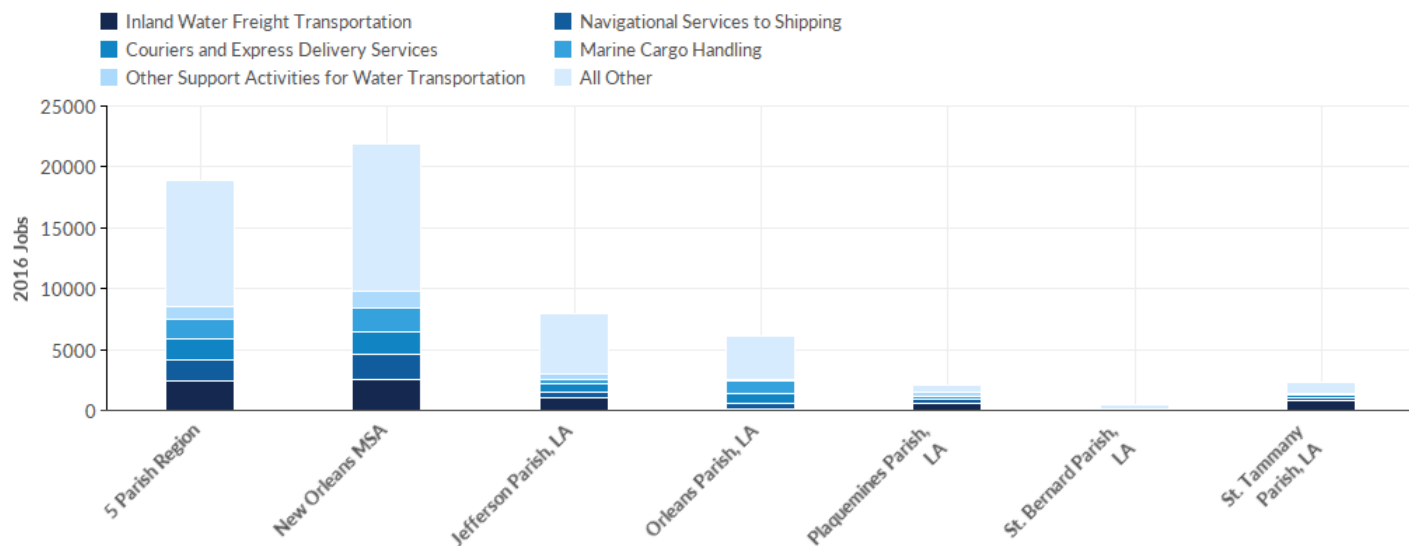


Industry	Description	5 Parish Region	New Orleans MSA	Jefferson Parish, LA	Orleans Parish, LA	Plaquemines Parish, LA	St. Bernard Parish, LA	St. Tammany Parish, LA
488330	Navigational Services to Shipping	2,066	2,440	703	604	500	<10	258
483211	Inland Water Freight Transportation	1,907	2,040	722	56	366	32	730
492110	Couriers and Express Delivery Services	1,507	1,647	664	696	<10	0	143
488320	Marine Cargo Handling	1,342	1,653	109	725	332	137	39
484122	General Freight Trucking, Long-Distance, Less Than Truckload	822	897	582	168	53	0	19
488510	Freight Transportation Arrangement	811	860	402	351	<10	10	47
485113	Bus and Other Motor Vehicle Transit Systems	675	675	116	559	0	0	0
562111	Solid Waste Collection	668	710	149	113	32	180	195
484220	Specialized Freight (except Used Goods) Trucking, Local	632	652	372	54	23	13	170
488390	Other Support Activities for Water Transportation	600	1,069	229	139	213	<10	18
481111	Scheduled Passenger Air Transportation	549	549	548	<10	0	0	0
532111	Passenger Car Rental	533	547	398	101	0	0	34
	Total	16,569	18,970	6,738	5,129	1,921	726	2,054

Industry	Description	5 Parish Region	New Orleans MSA	Jefferson Parish, LA	Orleans Parish, LA	Plaquemines Parish, LA	St. Bernard Parish, LA	St. Tammany Parish, LA
484110	General Freight Trucking, Local	512	540	195	234	<10	<10	71
483212	Inland Water Passenger Transportation	461	461	76	178	59	147	0
484121	General Freight Trucking, Long-Distance, Truckload	451	703	182	59	38	86	86
488119	Other Airport Operations	327	328	298	<10	0	0	20
484230	Specialized Freight (except Used Goods) Trucking, Long-Distance	284	412	83	112	<10	74	<10
485510	Charter Bus Industry	256	256	26	224	0	0	<10
483111	Deep Sea Freight Transportation	251	251	125	97	<10	0	27
481211	Nonscheduled Chartered Passenger Air Transportation	223	223	46	40	108	16	13
488310	Port and Harbor Operations	202	205	52	143	0	<10	0
532120	Truck, Utility Trailer, and RV (Recreational Vehicle) Rental and Leasing	186	191	102	50	25	0	<10
483113	Coastal and Great Lakes Freight Transportation	183	514	36	26	54	0	67
484210	Used Household and Office Goods Moving	179	188	80	38	0	0	61
531130	Lessors of Miniwarehouses and Self-Storage Units	154	167	96	30	<10	<10	17
485410	School and Employee Bus Transportation	128	128	128	0	0	0	0
492210	Local Messengers and Local Delivery	126	127	73	40	<10	0	12
488991	Packing and Crating	109	109	12	97	0	0	0
488999	All Other Support Activities for Transportation	89	89	<10	88	0	0	<10
488190	Other Support Activities for Air Transportation	87	89	41	41	<10	0	<10
488490	Other Support Activities for Road Transportation	71	71	55	15	0	0	<10
483114	Coastal and Great Lakes Passenger Transportation	63	63	<10	0	60	<10	0
	Total	16,569	18,970	6,738	5,129	1,921	726	2,054

Industry	Description	5 Parish Region	New Orleans MSA	Jefferson Parish, LA	Orleans Parish, LA	Plaquemines Parish, LA	St. Bernard Parish, LA	St. Tammany Parish, LA
483112	Deep Sea Passenger Transportation	34	34	<10	0	27	0	0
488210	Support Activities for Rail Transportation	32	32	13	<10	<10	<10	<10
485210	Interurban and Rural Bus Transportation	26	26	<10	24	0	0	<10
481112	Scheduled Freight Air Transportation	11	11	11	0	0	0	0
485991	Special Needs Transportation	<10	<10	<10	<10	0	0	0
485111	Mixed Mode Transit Systems	<10	<10	0	<10	0	0	0
481212	Nonscheduled Chartered Freight Air Transportation	<10	<10	0	<10	0	0	0
488111	Air Traffic Control	0	0	0	0	0	0	0
485119	Other Urban Transit Systems	0	0	0	0	0	0	0
485112	Commuter Rail Systems	0	0	0	0	0	0	0
481219	Other Nonscheduled Air Transportation	0	0	0	0	0	0	0
	Total	16,569	18,970	6,738	5,129	1,921	726	2,054

Industry Breakdown - 2016 Jobs

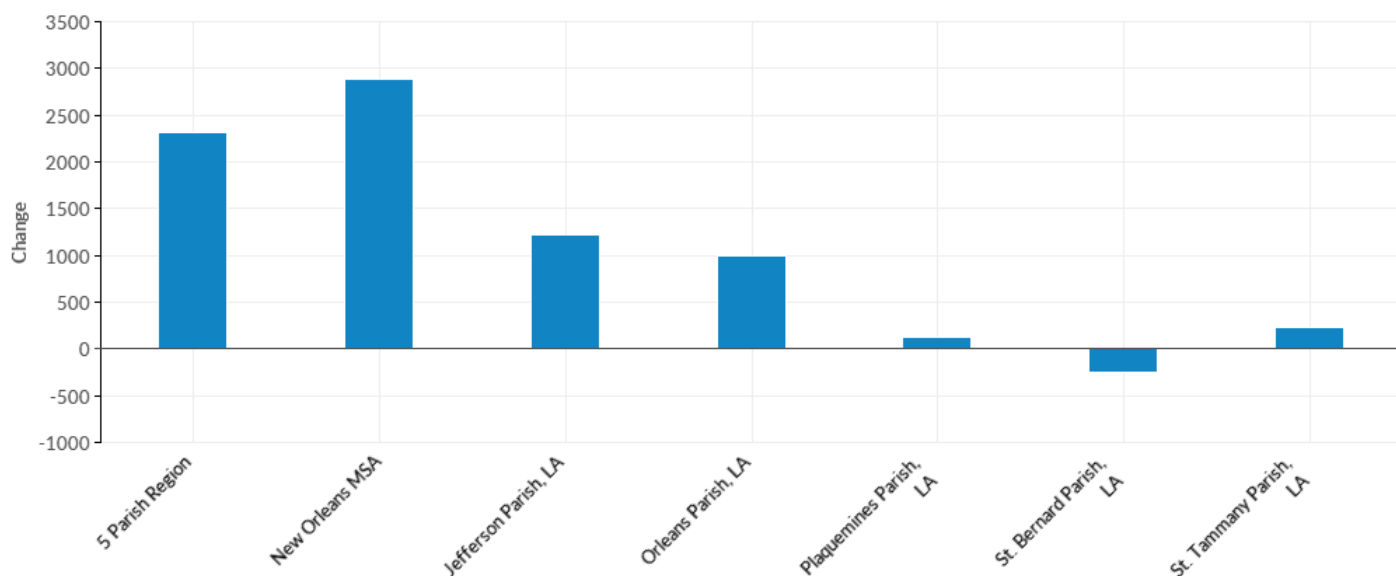


Industry	Description	5 Parish Region	New Orleans MSA	Jefferson Parish, LA	Orleans Parish, LA	Plaquemines Parish, LA	St. Bernard Parish, LA	St. Tammany Parish, LA
483211	Inland Water Freight Transportation	2,469	2,555	1,002	70	522	84	790
488330	Navigational Services to Shipping	1,702	2,029	516	549	377	<10	259
492110	Couriers and Express Delivery Services	1,679	1,834	629	785	<10	<10	251
488320	Marine Cargo Handling	1,657	2,034	343	1,001	234	78	<10
488390	Other Support Activities for Water Transportation	962	1,356	480	80	303	<10	98
488510	Freight Transportation Arrangement	861	926	461	317	0	0	83
532111	Passenger Car Rental	831	836	526	263	<10	<10	41
485113	Bus and Other Motor Vehicle Transit Systems	780	780	140	640	0	0	0
481111	Scheduled Passenger Air Transportation	767	767	767	<10	0	0	0
562111	Solid Waste Collection	698	722	341	197	24	20	116
484220	Specialized Freight (except Used Goods) Trucking, Local	573	599	301	32	22	15	203
484121	General Freight Trucking, Long-Distance, Truckload	540	855	154	119	33	164	70
	Total	18,886	21,855	7,956	6,130	2,039	483	2,279

Industry	Description	5 Parish Region	New Orleans MSA	Jefferson Parish, LA	Orleans Parish, LA	Plaquemines Parish, LA	St. Bernard Parish, LA	St. Tammany Parish, LA
484122	General Freight Trucking, Long-Distance, Less Than Truckload	537	783	344	104	58	<10	30
484110	General Freight Trucking, Local	515	581	249	156	15	15	81
483111	Deep Sea Freight Transportation	461	463	215	243	0	0	<10
485410	School and Employee Bus Transportation	382	393	119	262	0	0	<10
485510	Charter Bus Industry	375	375	61	313	0	0	0
532120	Truck, Utility Trailer, and RV (Recreational Vehicle) Rental and Leasing	312	324	173	91	31	0	16
488119	Other Airport Operations	303	303	292	11	0	0	0
484210	Used Household and Office Goods Moving	275	295	150	97	0	0	29
483212	Inland Water Passenger Transportation	268	268	10	170	<10	83	0
481211	Nonscheduled Chartered Passenger Air Transportation	253	253	46	51	127	0	29
484230	Specialized Freight (except Used Goods) Trucking, Long-Distance	224	407	64	120	<10	0	30
488310	Port and Harbor Operations	200	200	68	125	<10	<10	0
531130	Lessors of Miniwarehouses and Self-Storage Units	176	194	97	47	<10	<10	25
483114	Coastal and Great Lakes Passenger Transportation	168	168	<10	56	111	0	0
488190	Other Support Activities for Air Transportation	164	164	118	31	<10	<10	<10
483113	Coastal and Great Lakes Freight Transportation	162	718	<10	22	137	0	<10
492210	Local Messengers and Local Delivery	151	192	77	19	<10	<10	52
485991	Special Needs Transportation	125	126	111	14	0	0	<10
488490	Other Support Activities for Road Transportation	105	107	60	<10	<10	0	44
488991	Packing and Crating	98	98	14	84	0	0	0
	Total	18,886	21,855	7,956	6,130	2,039	483	2,279

Industry	Description	5 Parish Region	New Orleans MSA	Jefferson Parish, LA	Orleans Parish, LA	Plaquemines Parish, LA	St. Bernard Parish, LA	St. Tammany Parish, LA
488210	Support Activities for Rail Transportation	41	76	<10	23	<10	0	<10
488999	All Other Support Activities for Transportation	39	39	<10	30	0	0	<10
485210	Interurban and Rural Bus Transportation	18	18	0	<10	0	0	12
481112	Scheduled Freight Air Transportation	15	15	15	0	0	0	0
483112	Deep Sea Passenger Transportation	<10	<10	0	<10	<10	0	<10
481212	Nonscheduled Chartered Freight Air Transportation	<10	<10	0	<10	0	0	0
488111	Air Traffic Control	0	0	0	0	0	0	0
485112	Commuter Rail Systems	0	0	0	0	0	0	0
485119	Other Urban Transit Systems	0	0	0	0	0	0	0
481219	Other Nonscheduled Air Transportation	0	0	0	0	0	0	0
485111	Mixed Mode Transit Systems	0	0	0	0	0	0	0
	Total	18,886	21,855	7,956	6,130	2,039	483	2,279

Industry Breakdown - Change

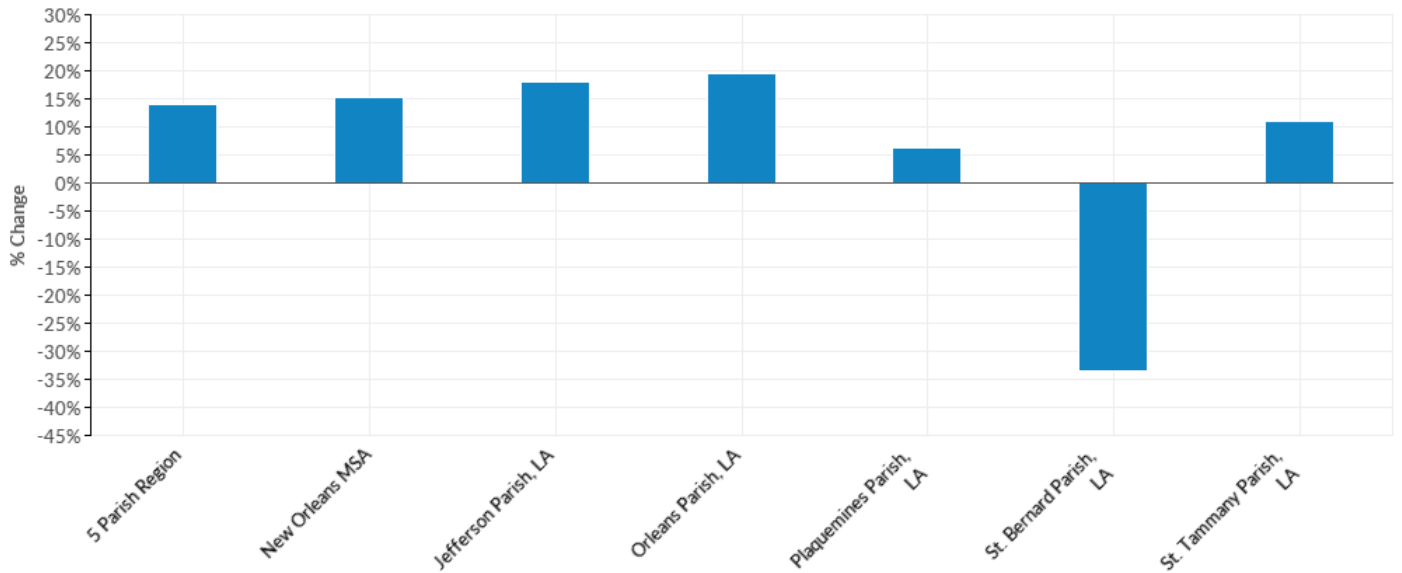


Industry	Description	5 Parish Region	New Orleans MSA	Jefferson Parish, LA	Orleans Parish, LA	Plaquemines Parish, LA	St. Bernard Parish, LA	St. Tammany Parish, LA
483211	Inland Water Freight Transportation	562	515	280	14	156	52	60
488390	Other Support Activities for Water Transportation	362	287	251	-59	90	--	80
488320	Marine Cargo Handling	315	381	234	276	-98	-59	--
532111	Passenger Car Rental	298	289	128	162	--	--	7
485410	School and Employee Bus Transportation	254	265	-9	262	0	0	--
481111	Scheduled Passenger Air Transportation	218	218	219	--	0	0	0
483111	Deep Sea Freight Transportation	210	212	90	146	--	0	--
492110	Couriers and Express Delivery Services	172	187	-35	89	--	--	108
532120	Truck, Utility Trailer, and RV (Recreational Vehicle) Rental and Leasing	126	133	71	41	6	0	--
485510	Charter Bus Industry	119	119	35	89	0	0	--
485991	Special Needs Transportation	--	--	--	--	0	0	--
483114	Coastal and Great Lakes Passenger Transportation	105	105	--	56	51	--	0
	Total	2,317	2,885	1,218	1,001	118	-243	225

Industry	Description	5 Parish Region	New Orleans MSA	Jefferson Parish, LA	Orleans Parish, LA	Plaquemines Parish, LA	St. Bernard Parish, LA	St. Tammany Parish, LA
485113	Bus and Other Motor Vehicle Transit Systems	105	105	24	81	0	0	0
484210	Used Household and Office Goods Moving	96	107	70	59	0	0	-32
484121	General Freight Trucking, Long-Distance, Truckload	89	152	-28	60	-5	78	-16
488190	Other Support Activities for Air Transportation	77	75	77	-10	--	--	--
488510	Freight Transportation Arrangement	50	66	59	-34	--	-10	36
488490	Other Support Activities for Road Transportation	34	36	5	--	--	0	--
481211	Nonscheduled Chartered Passenger Air Transportation	30	30	0	11	19	-16	16
562111	Solid Waste Collection	30	12	192	84	-8	-160	-79
492210	Local Messengers and Local Delivery	25	65	4	-21	--	--	40
531130	Lessors of Miniwarehouses and Self-Storage Units	22	27	1	17	--	--	8
488210	Support Activities for Rail Transportation	9	44	--	--	--	--	--
481112	Scheduled Freight Air Transportation	4	4	4	0	0	0	0
484110	General Freight Trucking, Local	3	41	54	-78	--	--	10
481219	Other Nonscheduled Air Transportation	0	0	0	0	0	0	0
488111	Air Traffic Control	0	0	0	0	0	0	0
485119	Other Urban Transit Systems	0	0	0	0	0	0	0
485112	Commuter Rail Systems	0	0	0	0	0	0	0
481212	Nonscheduled Chartered Freight Air Transportation	--	--	0	--	0	0	0
488310	Port and Harbor Operations	-2	-5	16	-18	--	--	0
485111	Mixed Mode Transit Systems	--	--	0	--	0	0	0
485210	Interurban and Rural Bus Transportation	-8	-8	--	--	0	0	--
	Total	2,317	2,885	1,218	1,001	118	-243	225

Industry	Description	5 Parish Region	New Orleans MSA	Jefferson Parish, LA	Orleans Parish, LA	Plaquemines Parish, LA	St. Bernard Parish, LA	St. Tammany Parish, LA
488991	Packing and Crating	-11	-11	2	-13	0	0	0
483113	Coastal and Great Lakes Freight Transportation	-21	204	--	-4	83	0	--
488119	Other Airport Operations	-24	-25	-6	--	0	0	-20
483112	Deep Sea Passenger Transportation	--	--	--	--	--	0	--
488999	All Other Support Activities for Transportation	-50	-50	--	-58	0	0	--
484220	Specialized Freight (except Used Goods) Trucking, Local	-59	-53	-71	-22	-1	2	33
484230	Specialized Freight (except Used Goods) Trucking, Long- Distance	-60	-5	-19	8	--	-74	--
483212	Inland Water Passenger Transportation	-193	-193	-66	-8	--	-64	0
484122	General Freight Trucking, Long- Distance, Less Than Truckload	-285	-114	-238	-64	5	--	11
488330	Navigational Services to Shipping	-364	-411	-187	-55	-123	--	1
	Total	2,317	2,885	1,218	1,001	118	-243	225

Industry Breakdown - % Change

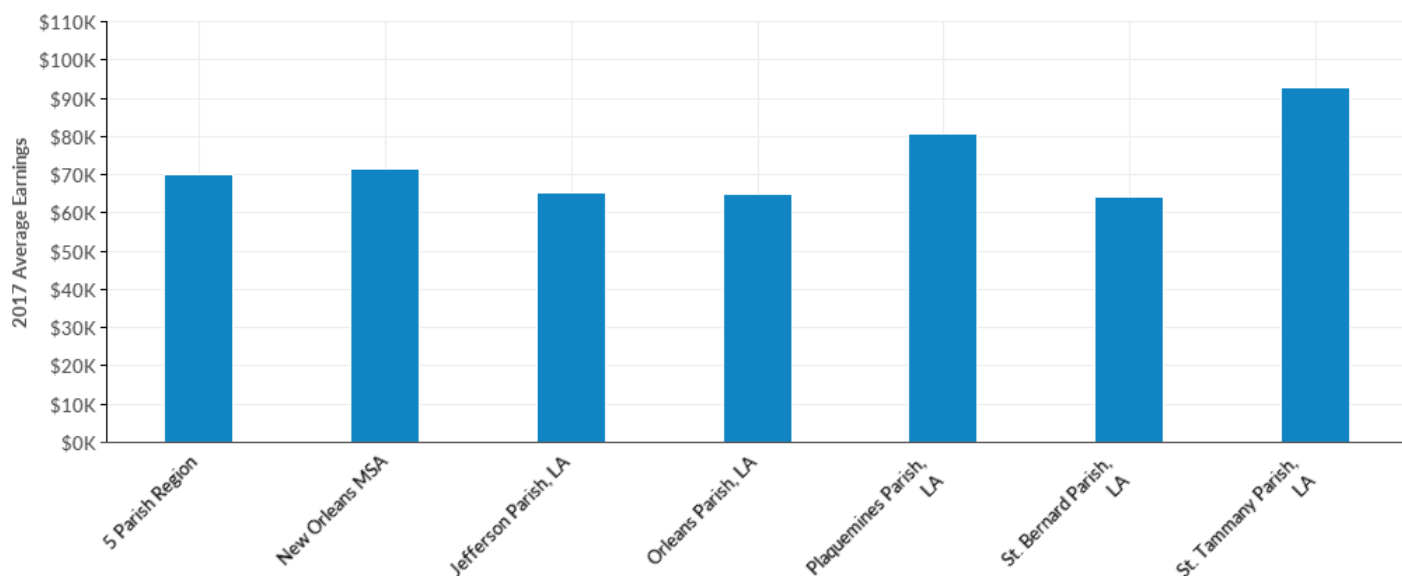


Industry	Description	5 Parish Region	New Orleans MSA	Jefferson Parish, LA	Orleans Parish, LA	Plaquemines Parish, LA	St. Bernard Parish, LA	St. Tammany Parish, LA
485991	Special Needs Transportation	--	--	--	--	0%	0%	--
485410	School and Employee Bus Transportation	198%	207%	-7%	--	0%	0%	--
483114	Coastal and Great Lakes Passenger Transportation	167%	167%	--	--	85%	--	0%
488190	Other Support Activities for Air Transportation	89%	84%	188%	-24%	--	--	--
483111	Deep Sea Freight Transportation	84%	84%	72%	151%	--	0%	--
532120	Truck, Utility Trailer, and RV (Recreational Vehicle) Rental and Leasing	68%	70%	70%	82%	24%	0%	--
488390	Other Support Activities for Water Transportation	60%	27%	110%	-42%	42%	--	444%
532111	Passenger Car Rental	56%	53%	32%	160%	--	--	21%
484210	Used Household and Office Goods Moving	54%	57%	88%	155%	0%	0%	-52%
488490	Other Support Activities for Road Transportation	48%	51%	9%	--	--	0%	--
485510	Charter Bus Industry	46%	46%	135%	40%	0%	0%	--
481111	Scheduled Passenger Air Transportation	40%	40%	40%	--	0%	0%	0%
	Total	14%	15%	18%	20%	6%	-33%	11%

Industry	Description	5 Parish Region	New Orleans MSA	Jefferson Parish, LA	Orleans Parish, LA	Plaquemines Parish, LA	St. Bernard Parish, LA	St. Tammany Parish, LA
481112	Scheduled Freight Air Transportation	36%	36%	36%	0%	0%	0%	0%
483211	Inland Water Freight Transportation	29%	25%	39%	25%	43%	163%	8%
488210	Support Activities for Rail Transportation	28%	138%	--	--	--	--	--
488320	Marine Cargo Handling	23%	23%	215%	38%	-30%	-43%	--
492210	Local Messengers and Local Delivery	20%	51%	5%	-53%	--	--	333%
484121	General Freight Trucking, Long-Distance, Truckload	20%	22%	-15%	102%	-13%	91%	-19%
485113	Bus and Other Motor Vehicle Transit Systems	16%	16%	21%	14%	0%	0%	0%
531130	Lessors of Miniwarehouses and Self-Storage Units	14%	16%	1%	57%	--	--	47%
481211	Nonscheduled Chartered Passenger Air Transportation	13%	13%	0%	28%	18%	-100%	123%
492110	Couriers and Express Delivery Services	11%	11%	-5%	13%	--	--	76%
488510	Freight Transportation Arrangement	6%	8%	15%	-10%	--	-100%	77%
562111	Solid Waste Collection	4%	2%	129%	74%	-25%	-89%	-41%
484110	General Freight Trucking, Local	1%	8%	28%	-33%	--	--	14%
485112	Commuter Rail Systems	0%	0%	0%	0%	0%	0%	0%
488111	Air Traffic Control	0%	0%	0%	0%	0%	0%	0%
481219	Other Nonscheduled Air Transportation	0%	0%	0%	0%	0%	0%	0%
485119	Other Urban Transit Systems	0%	0%	0%	0%	0%	0%	0%
488310	Port and Harbor Operations	-1%	-2%	31%	-13%	--	--	0%
488119	Other Airport Operations	-7%	-8%	-2%	--	0%	0%	-100%
484220	Specialized Freight (except Used Goods) Trucking, Local	-9%	-8%	-19%	-41%	-4%	15%	19%
488991	Packing and Crating	-10%	-10%	17%	-13%	0%	0%	0%
483113	Coastal and Great Lakes Freight Transportation	-11%	40%	--	-15%	154%	0%	--
	Total	14%	15%	18%	20%	6%	-33%	11%

Industry	Description	5 Parish Region	New Orleans MSA	Jefferson Parish, LA	Orleans Parish, LA	Plaquemines Parish, LA	St. Bernard Parish, LA	St. Tammany Parish, LA
488330	Navigational Services to Shipping	-18%	-17%	-27%	-9%	-25%	--	0%
484230	Specialized Freight (except Used Goods) Trucking, Long-Distance	-21%	-1%	-23%	7%	--	-100%	--
485210	Interurban and Rural Bus Transportation	-31%	-31%	--	--	0%	0%	--
484122	General Freight Trucking, Long-Distance, Less Than Truckload	-35%	-13%	-41%	-38%	9%	--	58%
483212	Inland Water Passenger Transportation	-42%	-42%	-87%	-4%	--	-44%	0%
488999	All Other Support Activities for Transportation	-56%	-56%	--	-66%	0%	0%	--
483112	Deep Sea Passenger Transportation	--	--	--	--	--	0%	--
481212	Nonscheduled Chartered Freight Air Transportation	--	--	0%	--	0%	0%	0%
485111	Mixed Mode Transit Systems	--	--	0%	--	0%	0%	0%
	Total	14%	15%	18%	20%	6%	-33%	11%

Industry Breakdown - 2017 Average Earnings

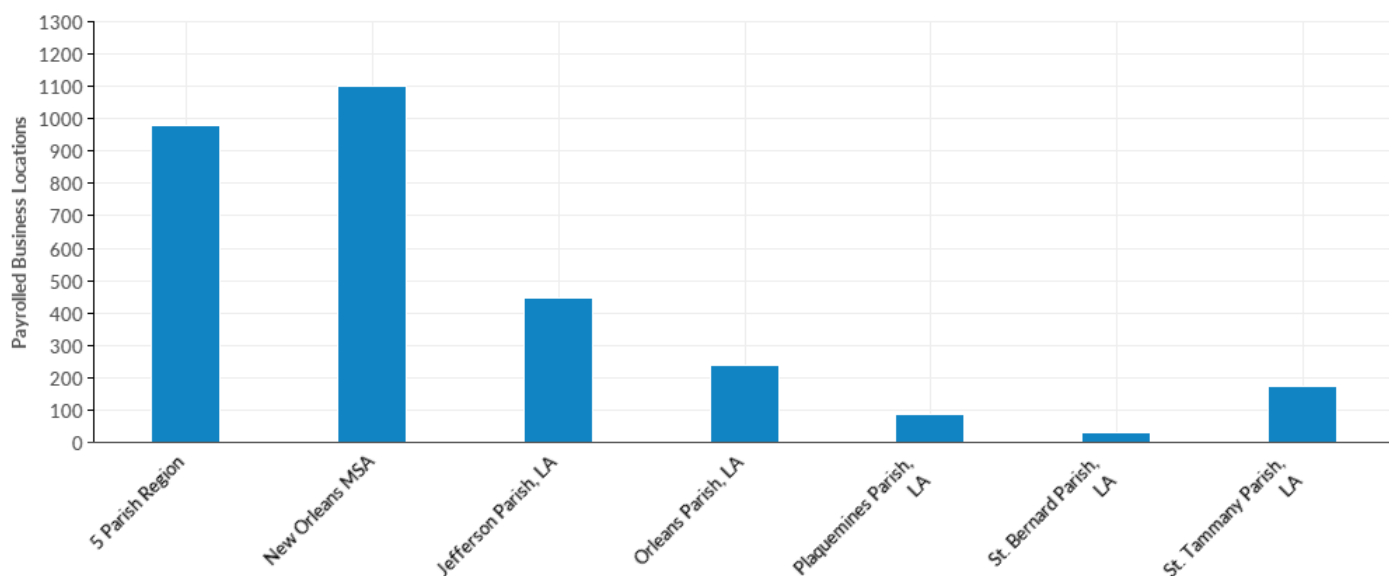


Industry	Description	5 Parish Region	New Orleans MSA	Jefferson Parish, LA	Orleans Parish, LA	Plaquemines Parish, LA	St. Bernard Parish, LA	St. Tammany Parish, LA
483111	Deep Sea Freight Transportation	\$170,413	\$169,886	\$136,592	\$198,874	\$0	\$0	--
483112	Deep Sea Passenger Transportation	--	--	\$0	--	--	\$0	--
488310	Port and Harbor Operations	\$125,570	\$125,562	\$129,998	\$123,089	--	--	\$0
483113	Coastal and Great Lakes Freight Transportation	\$110,956	\$131,918	\$155,655	\$215,484	\$81,464	\$0	--
483211	Inland Water Freight Transportation	\$100,384	\$99,364	\$85,965	\$94,572	\$88,225	\$60,386	\$133,185
481212	Nonscheduled Chartered Freight Air Transportation	--	--	\$0	--	\$0	\$0	\$0
488330	Navigational Services to Shipping	\$94,698	\$93,101	\$86,173	\$94,884	\$83,041	--	\$129,273
481211	Nonscheduled Chartered Passenger Air Transportation	\$88,236	\$88,236	\$93,197	\$69,228	\$100,250	\$0	\$63,954
488510	Freight Transportation Arrangement	\$85,364	\$84,672	\$79,738	\$94,682	\$0	\$0	\$81,421
483212	Inland Water Passenger Transportation	\$81,429	\$81,411	--	\$75,316	--	\$95,247	\$0
488490	Other Support Activities for Road Transportation	\$72,991	\$73,426	\$50,402	--	--	\$0	\$111,144
	Total	\$70,014	\$71,461	\$65,215	\$64,903	\$80,802	\$64,343	\$92,761

Industry	Description	5 Parish Region	New Orleans MSA	Jefferson Parish, LA	Orleans Parish, LA	Plaquemines Parish, LA	St. Bernard Parish, LA	St. Tammany Parish, LA
483114	Coastal and Great Lakes Passenger Transportation	\$72,658	\$72,658	--	\$69,286	\$75,065	\$0	\$0
484122	General Freight Trucking, Long-Distance, Less Than Truckload	\$67,768	\$70,012	\$73,908	\$61,592	\$46,837	--	\$43,825
481111	Scheduled Passenger Air Transportation	\$67,584	\$67,584	\$67,615	--	\$0	\$0	\$0
488390	Other Support Activities for Water Transportation	\$64,227	\$66,189	\$54,625	\$82,082	\$66,552	--	\$93,215
488320	Marine Cargo Handling	\$63,050	\$67,300	\$80,459	\$48,536	\$97,326	\$66,586	--
562111	Solid Waste Collection	\$62,160	\$62,253	\$67,383	\$53,704	\$65,435	\$70,796	\$60,661
484220	Specialized Freight (except Used Goods) Trucking, Local	\$60,693	\$59,931	\$63,976	\$55,507	\$38,564	\$37,268	\$60,360
485113	Bus and Other Motor Vehicle Transit Systems	\$60,313	\$60,313	\$66,221	\$59,310	\$0	\$0	\$0
484230	Specialized Freight (except Used Goods) Trucking, Long-Distance	\$59,953	\$64,377	\$47,995	\$63,661	--	\$0	\$71,504
484121	General Freight Trucking, Long-Distance, Truckload	\$58,849	\$55,372	\$60,816	\$65,072	\$42,772	\$58,672	\$54,712
488999	All Other Support Activities for Transportation	\$55,679	\$55,679	--	\$53,474	\$0	\$0	--
484110	General Freight Trucking, Local	\$55,581	\$54,698	\$56,655	\$56,109	\$53,979	\$40,811	\$53,777
492110	Couriers and Express Delivery Services	\$55,349	\$53,724	\$61,088	\$54,352	--	\$35,201	\$45,547
488210	Support Activities for Rail Transportation	\$52,156	\$60,078	--	\$51,972	--	\$0	--
485210	Interurban and Rural Bus Transportation	\$48,848	\$48,848	\$0	--	\$0	\$0	--
492210	Local Messengers and Local Delivery	\$43,964	\$42,074	\$45,656	\$37,615	--	--	\$44,499
488190	Other Support Activities for Air Transportation	\$43,885	\$43,885	\$36,487	\$64,226	--	--	--
	Total	\$70,014	\$71,461	\$65,215	\$64,903	\$80,802	\$64,343	\$92,761

Industry	Description	5 Parish Region	New Orleans MSA	Jefferson Parish, LA	Orleans Parish, LA	Plaquemines Parish, LA	St. Bernard Parish, LA	St. Tammany Parish, LA
531130	Lessors of Miniwarehouses and Self-Storage Units	\$40,122	\$38,984	\$45,041	\$39,689	--	--	\$23,563
481112	Scheduled Freight Air Transportation	\$39,760	\$39,760	\$39,760	\$0	\$0	\$0	\$0
485510	Charter Bus Industry	\$38,115	\$38,115	\$35,024	\$38,743	\$0	\$0	\$0
484210	Used Household and Office Goods Moving	\$36,563	\$37,445	\$37,371	\$37,626	\$0	\$0	\$29,313
532120	Truck, Utility Trailer, and RV (Recreational Vehicle) Rental and Leasing	\$36,493	\$37,221	\$38,678	\$27,117	\$55,457	\$0	\$31,286
485991	Special Needs Transportation	\$35,421	\$35,665	\$35,840	--	\$0	\$0	--
488991	Packing and Crating	\$33,935	\$33,935	\$40,506	\$32,695	\$0	\$0	\$0
532111	Passenger Car Rental	\$31,887	\$32,143	\$34,577	\$25,396	--	--	\$38,310
485410	School and Employee Bus Transportation	\$29,479	\$30,640	\$30,056	\$29,162	\$0	\$0	--
488119	Other Airport Operations	\$21,935	\$21,935	\$20,416	\$58,091	\$0	\$0	\$0
488111	Air Traffic Control	\$0	\$0	\$0	\$0	\$0	\$0	\$0
485119	Other Urban Transit Systems	\$0	\$0	\$0	\$0	\$0	\$0	\$0
481219	Other Nonscheduled Air Transportation	\$0	\$0	\$0	\$0	\$0	\$0	\$0
485112	Commuter Rail Systems	\$0	\$0	\$0	\$0	\$0	\$0	\$0
485111	Mixed Mode Transit Systems	\$0	\$0	\$0	\$0	\$0	\$0	\$0
	Total	\$70,014	\$71,461	\$65,215	\$64,903	\$80,802	\$64,343	\$92,761

Industry Breakdown - Payrolled Business Locations

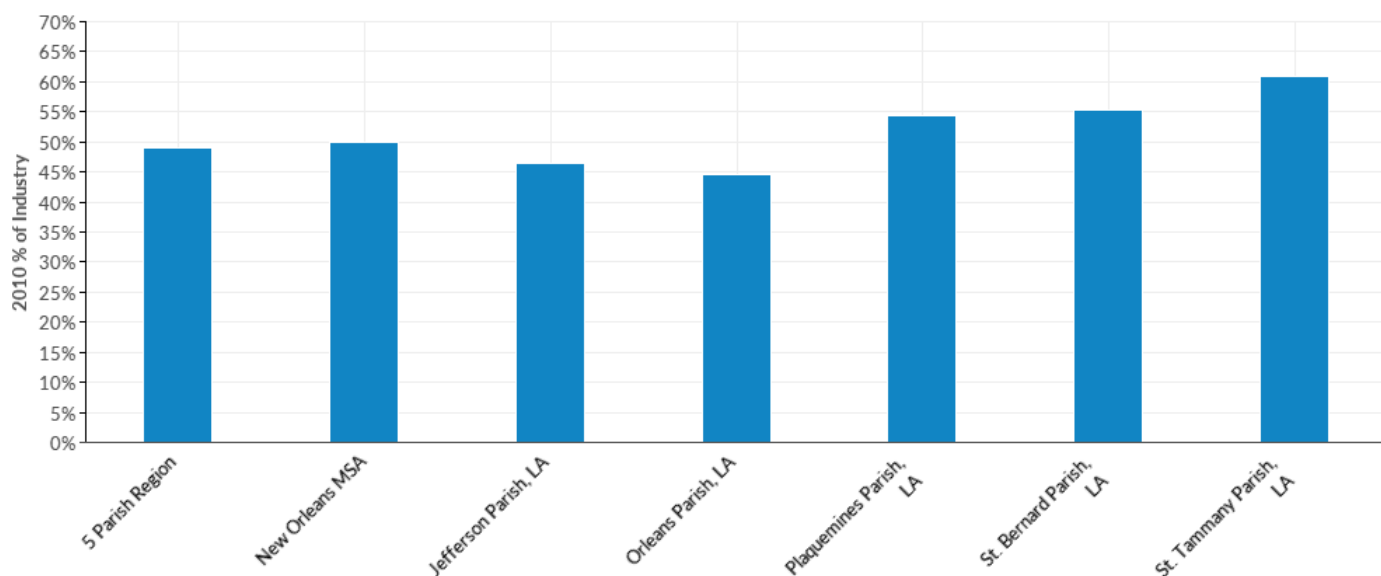


Industry	Description	5 Parish Region	New Orleans MSA	Jefferson Parish, LA	Orleans Parish, LA	Plaquemines Parish, LA	St. Bernard Parish, LA	St. Tammany Parish, LA
488330	Navigational Services to Shipping	91	100	44	9	22	1	15
484110	General Freight Trucking, Local	90	99	41	20	7	4	19
488510	Freight Transportation Arrangement	89	96	44	26	0	0	20
484220	Specialized Freight (except Used Goods) Trucking, Local	68	80	22	13	1	6	26
532111	Passenger Car Rental	53	54	29	16	1	1	8
483211	Inland Water Freight Transportation	53	56	26	6	11	2	9
484121	General Freight Trucking, Long-Distance, Truckload	52	66	21	13	1	3	15
531130	Lessors of Miniwarehouses and Self-Storage Units	49	53	28	8	3	2	8
488390	Other Support Activities for Water Transportation	44	50	24	8	5	1	6
492110	Couriers and Express Delivery Services	39	48	23	6	1	1	8
492210	Local Messengers and Local Delivery	36	41	16	13	1	1	6
488320	Marine Cargo Handling	29	41	11	12	3	2	1
562111	Solid Waste Collection	29	32	8	9	3	2	7
	Total	979	1,100	447	240	88	31	174

Industry	Description	5 Parish Region	New Orleans MSA	Jefferson Parish, LA	Orleans Parish, LA	Plaquemines Parish, LA	St. Bernard Parish, LA	St. Tammany Parish, LA
484210	Used Household and Office Goods Moving	26	27	15	7	0	0	5
532120	Truck, Utility Trailer, and RV (Recreational Vehicle) Rental and Leasing	26	27	16	6	3	0	1
484122	General Freight Trucking, Long-Distance, Less Than Truckload	21	28	12	7	1	1	1
484230	Specialized Freight (except Used Goods) Trucking, Long-Distance	17	27	8	5	2	0	2
488190	Other Support Activities for Air Transportation	16	16	8	3	3	1	2
483212	Inland Water Passenger Transportation	15	15	2	3	5	4	0
481211	Nonscheduled Chartered Passenger Air Transportation	14	14	3	5	4	0	2
483111	Deep Sea Freight Transportation	13	14	7	7	0	0	0
485410	School and Employee Bus Transportation	12	13	4	7	0	0	1
481111	Scheduled Passenger Air Transportation	11	11	10	1	0	0	0
483113	Coastal and Great Lakes Freight Transportation	10	12	1	2	4	0	3
488490	Other Support Activities for Road Transportation	10	11	3	3	1	0	3
483114	Coastal and Great Lakes Passenger Transportation	9	9	3	1	5	0	0
488991	Packing and Crating	8	8	2	6	0	0	0
485510	Charter Bus Industry	8	8	4	4	0	0	0
485991	Special Needs Transportation	7	8	2	3	0	0	2
488210	Support Activities for Rail Transportation	7	8	1	4	1	0	1
488999	All Other Support Activities for Transportation	6	6	3	1	0	0	2
488119	Other Airport Operations	6	6	4	1	0	0	0
488310	Port and Harbor Operations	5	6	2	2	1	1	0
	Total	979	1,100	447	240	88	31	174

Industry	Description	5 Parish Region	New Orleans MSA	Jefferson Parish, LA	Orleans Parish, LA	Plaquemines Parish, LA	St. Bernard Parish, LA	St. Tammany Parish, LA
483112	Deep Sea Passenger Transportation	3	3	0	1	1	0	1
485113	Bus and Other Motor Vehicle Transit Systems	3	3	1	2	0	0	0
481112	Scheduled Freight Air Transportation	3	3	3	0	0	0	0
481212	Nonscheduled Chartered Freight Air Transportation	3	3	0	3	0	0	0
485210	Interurban and Rural Bus Transportation	2	2	0	1	0	0	1
488111	Air Traffic Control	0	0	0	0	0	0	0
485112	Commuter Rail Systems	0	0	0	0	0	0	0
485119	Other Urban Transit Systems	0	0	0	0	0	0	0
481219	Other Nonscheduled Air Transportation	0	0	0	0	0	0	0
485111	Mixed Mode Transit Systems	0	0	0	0	0	0	0
	Total	979	1,100	447	240	88	31	174

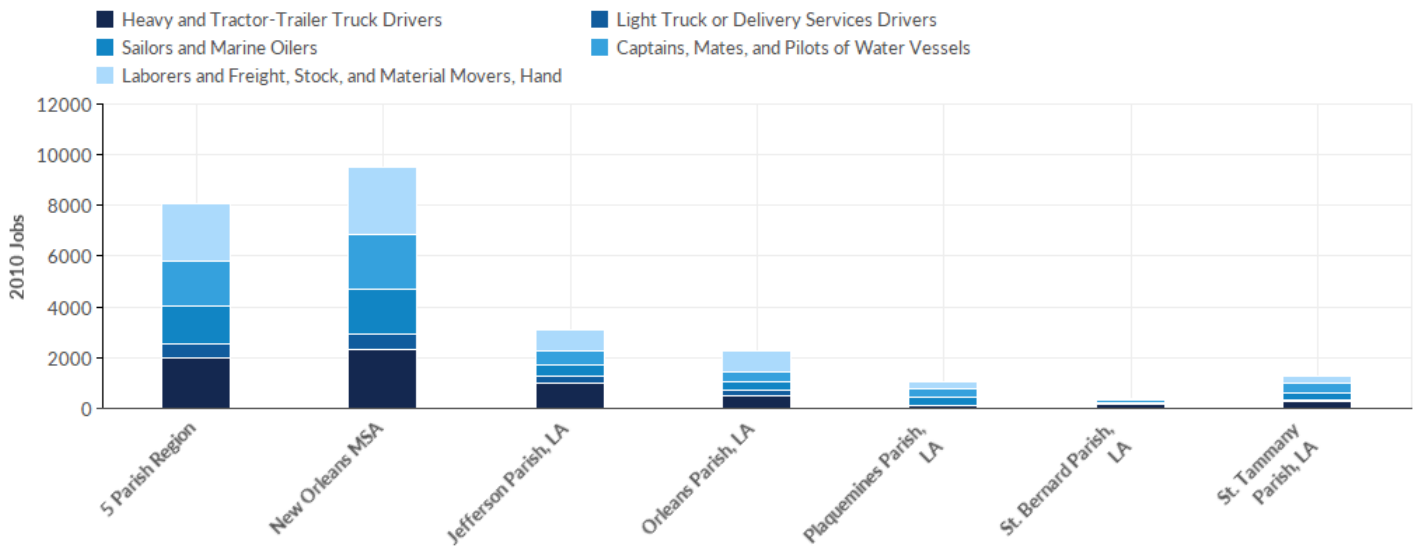
Top Occupations - 2010 % of Industry



SOC Code	Description	5 Parish Region	New Orleans MSA	Jefferson Parish, LA	Orleans Parish, LA	Plaquemines Parish, LA	St. Bernard Parish, LA	St. Tammany Parish, LA
53-7062	Laborers and Freight, Stock, and Material Movers, Hand	14%	14%	13%	16%	13%	11%	11%
53-3032	Heavy and Tractor-Trailer Truck Drivers	12%	12%	15%	9%	5%	20%	14%
53-5021	Captains, Mates, and Pilots of Water Vessels	11%	11%	8%	7%	20%	14%	19%
53-5011	Sailors and Marine Oilers	9%	9%	7%	7%	17%	10%	14%
53-3033	Light Truck or Delivery Services Drivers	3%	3%	4%	5%	1%	1%	3%
	Total	49%	50%	46%	44%	54%	55%	61%

Source: QCEW Employees - Emsi 2017.4 Class of Worker

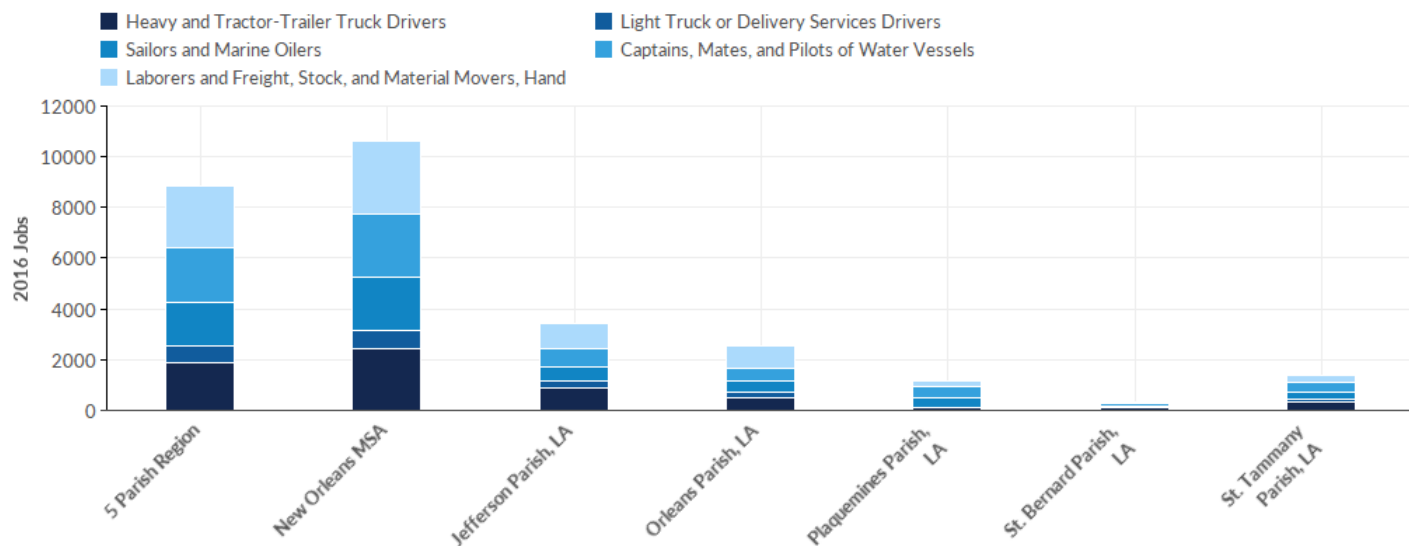
Top Occupations - 2010 Jobs



SOC Code	Description	5 Parish Region	New Orleans MSA	Jefferson Parish, LA	Orleans Parish, LA	Plaquemines Parish, LA	St. Bernard Parish, LA	St. Tammany Parish, LA
53-7062	Laborers and Freight, Stock, and Material Movers, Hand	2,272	2,644	875	838	246	78	234
53-3032	Heavy and Tractor-Trailer Truck Drivers	1,986	2,305	980	486	88	145	287
53-5021	Captains, Mates, and Pilots of Water Vessels	1,810	2,144	559	382	383	99	388
53-5011	Sailors and Marine Oilers	1,456	1,767	440	342	318	73	283
53-3033	Light Truck or Delivery Services Drivers	576	630	267	233	10	<10	58
	Total	8,099	9,490	3,121	2,281	1,046	402	1,249

Source: QCEW Employees - Emsi 2017.4 Class of Worker

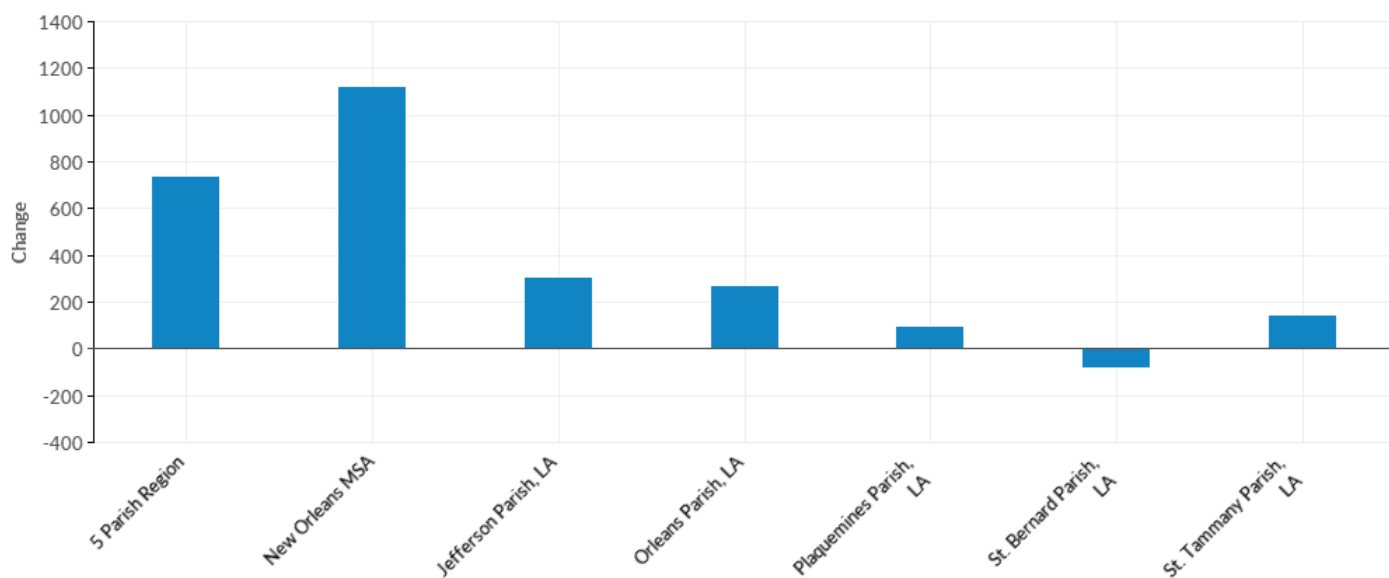
Top Occupations - 2016 Jobs



SOC Code	Description	5 Parish Region	New Orleans MSA	Jefferson Parish, LA	Orleans Parish, LA	Plaquemines Parish, LA	St. Bernard Parish, LA	St. Tammany Parish, LA
53-7062	Laborers and Freight, Stock, and Material Movers, Hand	2,445	2,854	967	907	226	45	300
53-5021	Captains, Mates, and Pilots of Water Vessels	2,131	2,516	724	477	448	85	398
53-3032	Heavy and Tractor-Trailer Truck Drivers	1,906	2,429	903	479	94	121	309
53-5011	Sailors and Marine Oilers	1,714	2,086	570	436	368	60	281
53-3033	Light Truck or Delivery Services Drivers	645	731	264	254	11	<10	107
	Total	8,842	10,617	3,427	2,553	1,147	320	1,395

Source: QCEW Employees - Emsi 2017.4 Class of Worker

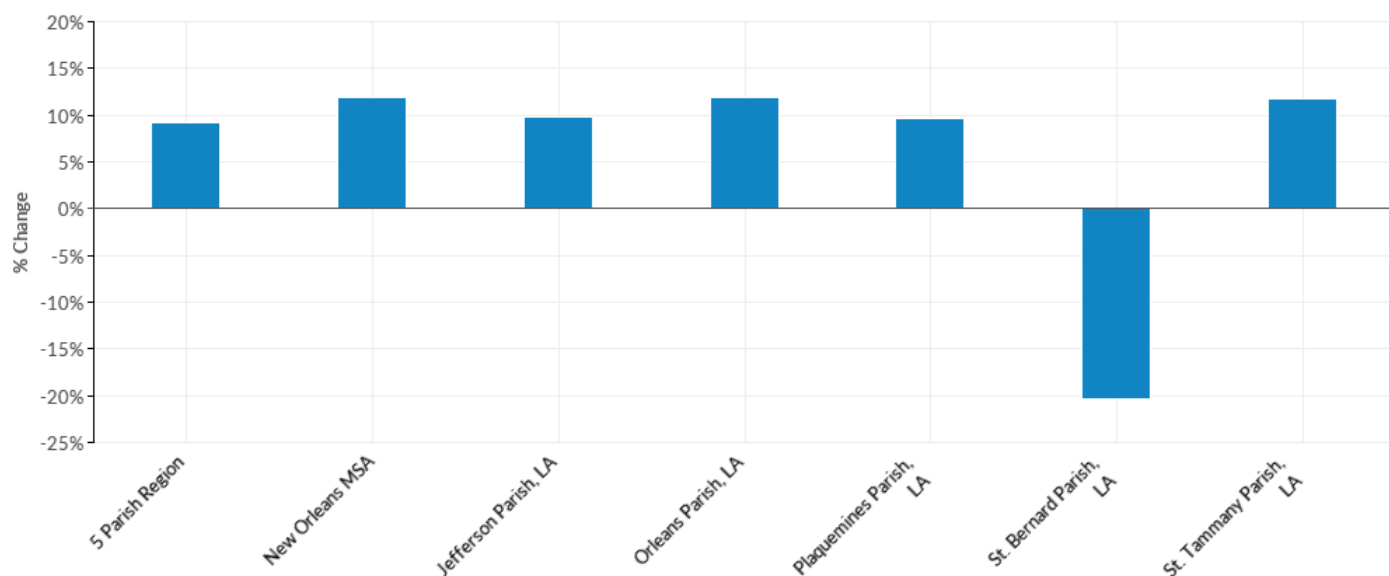
Top Occupations - Change



SOC Code	Description	5 Parish Region	New Orleans MSA	Jefferson Parish, LA	Orleans Parish, LA	Plaquemines Parish, LA	St. Bernard Parish, LA	St. Tammany Parish, LA
53-5021	Captains, Mates, and Pilots of Water Vessels	321	372	165	95	65	-14	10
53-5011	Sailors and Marine Oilers	258	319	130	94	50	-13	-2
53-7062	Laborers and Freight, Stock, and Material Movers, Hand	173	210	92	69	-20	-33	66
53-3033	Light Truck or Delivery Services Drivers	69	101	-3	21	1	--	49
53-3032	Heavy and Tractor-Trailer Truck Drivers	-80	124	-77	-7	6	-24	22
	Total	743	1,127	306	272	101	-82	146

Source: QCEW Employees - Emsi 2017.4 Class of Worker

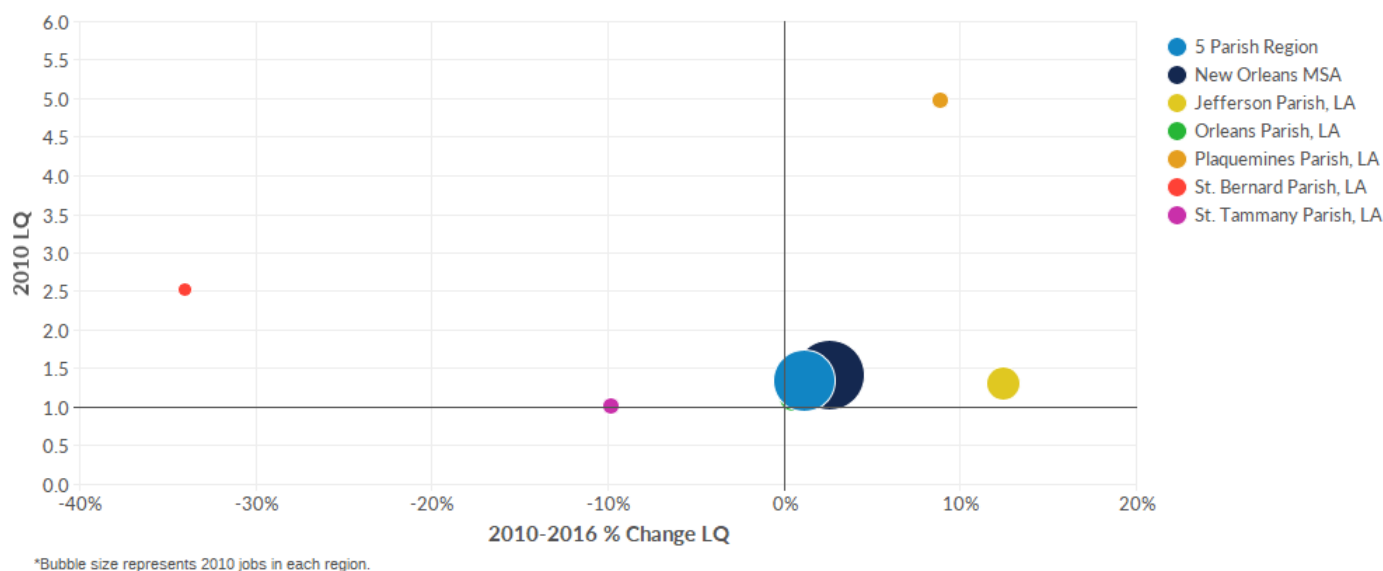
Top Occupations - % Change



SOC Code	Description	5 Parish Region	New Orleans MSA	Jefferson Parish, LA	Orleans Parish, LA	Plaquemines Parish, LA	St. Bernard Parish, LA	St. Tammany Parish, LA
53-5021	Captains, Mates, and Pilots of Water Vessels	18%	17%	30%	25%	17%	-14%	3%
53-5011	Sailors and Marine Oilers	18%	18%	30%	27%	16%	-18%	-1%
53-3033	Light Truck or Delivery Services Drivers	12%	16%	-1%	9%	10%	--	84%
53-7062	Laborers and Freight, Stock, and Material Movers, Hand	8%	8%	11%	8%	-8%	-42%	28%
53-3032	Heavy and Tractor-Trailer Truck Drivers	-4%	5%	-8%	-1%	7%	-17%	8%
	Total	9%	12%	10%	12%	10%	-20%	12%

Source: QCEW Employees - Emsi 2017.4 Class of Worker

Location Quotient Breakdown - 2010 National LQ



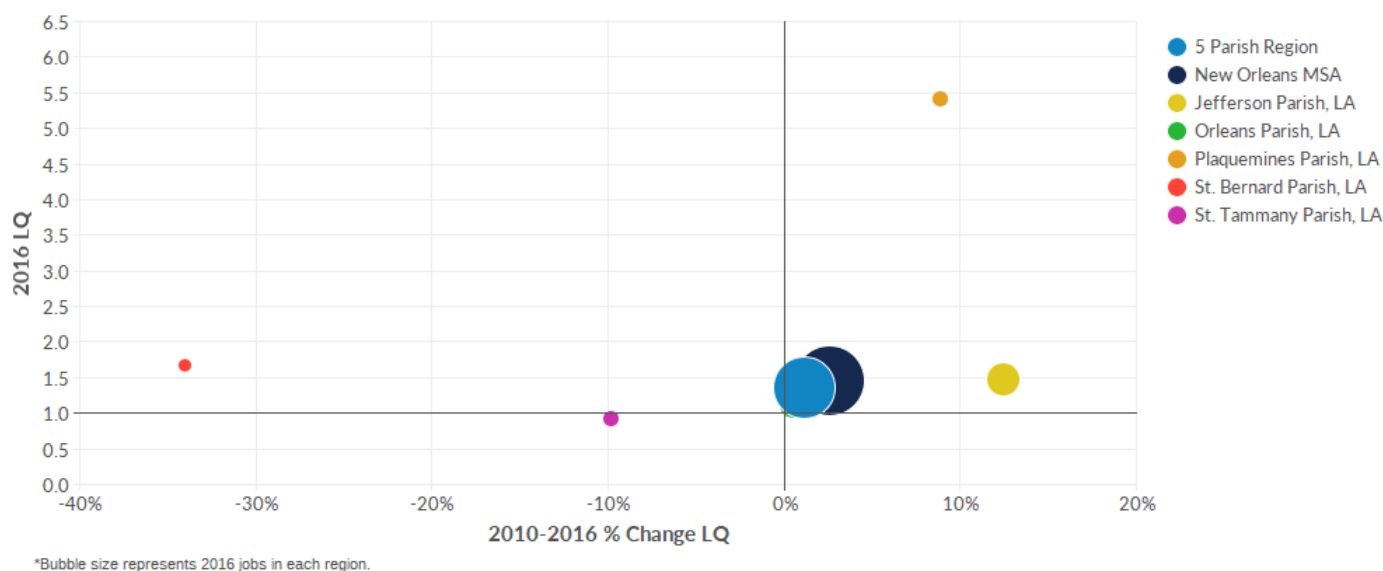
Industry	Description	5 Parish Region	New Orleans MSA	Jefferson Parish, LA	Orleans Parish, LA	Plaquemines Parish, LA	St. Bernard Parish, LA	St. Tammany Parish, LA
483212	Inland Water Passenger Transportation	30.90	28.54	12.26	32.48	127.65	426.68	0.00
488330	Navigational Services to Shipping	30.35	33.11	24.81	24.13	235.71	0.62	23.43
483211	Inland Water Freight Transportation	25.05	24.75	22.78	2.01	154.49	18.27	59.28
488390	Other Support Activities for Water Transportation	17.06	28.08	15.64	10.72	194.33	1.53	3.18
488320	Marine Cargo Handling	8.85	10.07	1.73	13.01	70.27	39.03	1.57
483111	Deep Sea Freight Transportation	5.96	5.51	7.14	6.28	1.26	0.00	3.98
485113	Bus and Other Motor Vehicle Transit Systems	5.74	5.30	2.36	12.95	0.00	0.00	0.00
483113	Coastal and Great Lakes Freight Transportation	4.93	12.79	2.35	1.87	46.75	0.00	11.19
488310	Port and Harbor Operations	3.16	2.96	1.95	6.06	0.00	5.14	0.00
488999	All Other Support Activities for Transportation	2.69	2.49	0.04	7.25	0.00	0.00	0.07
483114	Coastal and Great Lakes Passenger Transportation	2.48	2.29	0.20	0.00	75.36	1.87	0.00
485510	Charter Bus Industry	2.38	2.20	0.57	5.67	0.00	0.00	0.33
	Total	1.34	1.41	1.31	1.13	4.97	2.53	1.02

Industry	Description	5 Parish Region	New Orleans MSA	Jefferson Parish, LA	Orleans Parish, LA	Plaquemines Parish, LA	St. Bernard Parish, LA	St. Tammany Parish, LA
481211	Nonscheduled Chartered Passenger Air Transportation	2.02	1.86	1.00	0.98	31.30	6.26	0.74
488991	Packing and Crating	1.80	1.66	0.47	4.36	0.00	0.00	0.00
562111	Solid Waste Collection	1.55	1.52	0.83	0.71	2.35	17.99	2.78
488119	Other Airport Operations	1.53	1.42	3.35	0.12	0.00	0.00	0.57
532111	Passenger Car Rental	1.46	1.38	2.62	0.75	0.00	0.00	0.58
488510	Freight Transportation Arrangement	1.32	1.29	1.57	1.55	0.03	0.72	0.47
483112	Deep Sea Passenger Transportation	1.13	1.04	0.56	0.00	28.78	0.00	0.00
484122	General Freight Trucking, Long-Distance, Less Than Truckload	1.12	1.13	1.90	0.62	2.30	0.00	0.16
531130	Lessors of Miniwarehouses and Self-Storage Units	0.96	0.96	1.43	0.50	1.39	1.15	0.65
532120	Truck, Utility Trailer, and RV (Recreational Vehicle) Rental and Leasing	0.95	0.91	1.26	0.70	4.12	0.00	0.28
484220	Specialized Freight (except Used Goods) Trucking, Local	0.92	0.88	1.30	0.21	1.08	0.79	1.53
492110	Couriers and Express Delivery Services	0.87	0.88	0.92	1.10	0.07	0.00	0.51
492210	Local Messengers and Local Delivery	0.82	0.76	1.13	0.70	0.22	0.00	0.48
484230	Specialized Freight (except Used Goods) Trucking, Long-Distance	0.73	0.97	0.51	0.78	0.64	8.16	0.11
484110	General Freight Trucking, Local	0.69	0.68	0.64	0.86	0.18	0.44	0.60
488490	Other Support Activities for Road Transportation	0.63	0.58	1.17	0.37	0.00	0.00	0.04
484210	Used Household and Office Goods Moving	0.59	0.57	0.64	0.34	0.00	0.00	1.24
488210	Support Activities for Rail Transportation	0.40	0.37	0.38	0.29	0.29	4.68	0.11
485210	Interurban and Rural Bus Transportation	0.39	0.36	0.04	1.00	0.00	0.00	0.06
481111	Scheduled Passenger Air Transportation	0.38	0.35	0.92	0.00	0.00	0.00	0.00
	Total	1.34	1.41	1.31	1.13	4.97	2.53	1.02

Industry	Description	5 Parish Region	New Orleans MSA	Jefferson Parish, LA	Orleans Parish, LA	Plaquemines Parish, LA	St. Bernard Parish, LA	St. Tammany Parish, LA
481112	Scheduled Freight Air Transportation	0.28	0.26	0.68	0.00	0.00	0.00	0.00
484121	General Freight Trucking, Long-Distance, Truckload	0.27	0.39	0.26	0.10	0.73	2.21	0.31
488190	Other Support Activities for Air Transportation	0.26	0.24	0.29	0.33	0.27	0.00	0.05
485410	School and Employee Bus Transportation	0.19	0.18	0.46	0.00	0.00	0.00	0.00
485111	Mixed Mode Transit Systems	0.18	0.16	0.00	0.48	0.00	0.00	0.00
481212	Nonscheduled Chartered Freight Air Transportation	0.04	0.03	0.00	0.10	0.00	0.00	0.00
485991	Special Needs Transportation	0.03	0.03	0.05	0.02	0.00	0.00	0.00
481219	Other Nonscheduled Air Transportation	0.00	0.00	0.00	0.00	0.00	0.00	0.00
488111	Air Traffic Control	0.00	0.00	0.00	0.00	0.00	0.00	0.00
485119	Other Urban Transit Systems	0.00	0.00	0.00	0.00	0.00	0.00	0.00
485112	Commuter Rail Systems	0.00	0.00	0.00	0.00	0.00	0.00	0.00
	Total	1.34	1.41	1.31	1.13	4.97	2.53	1.02

Source: QCEW Employees - Emsi 2017.4 Class of Worker

Location Quotient Breakdown - 2016 National LQ



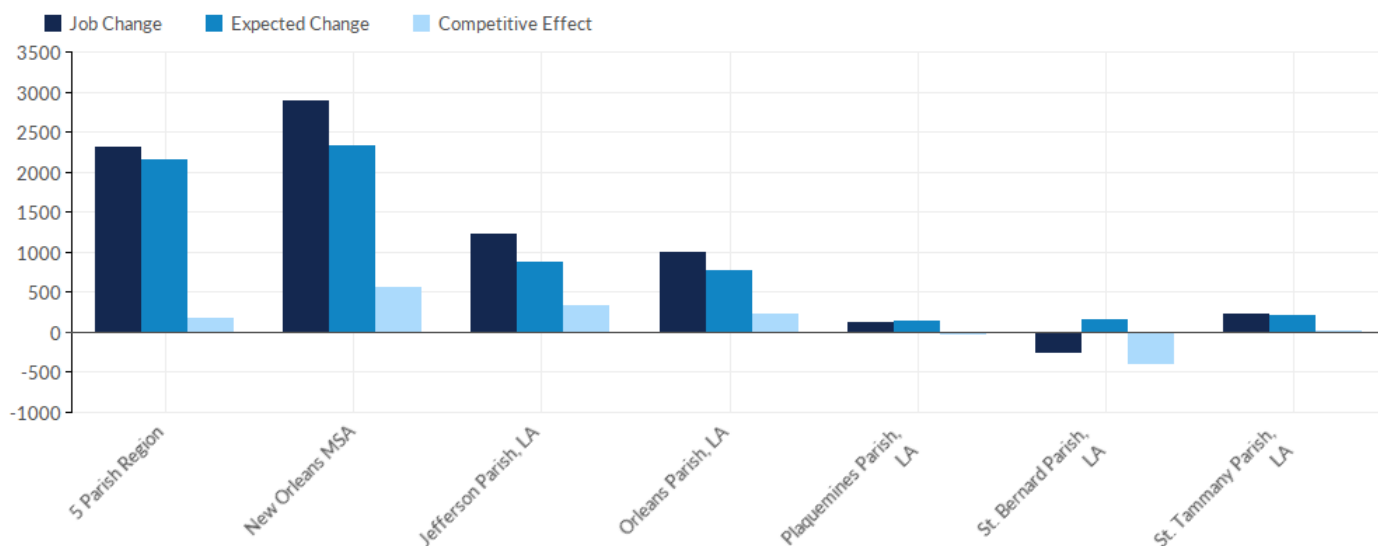
Industry	Description	5 Parish Region	New Orleans MSA	Jefferson Parish, LA	Orleans Parish, LA	Plaquemines Parish, LA	St. Bernard Parish, LA	St. Tammany Parish, LA
488390	Other Support Activities for Water Transportation	34.56	45.16	44.45	7.46	403.76	0.96	19.95
483211	Inland Water Freight Transportation	31.33	30.05	32.81	2.29	245.90	51.63	56.74
488330	Navigational Services to Shipping	28.46	31.45	22.25	23.67	233.86	0.32	24.56
483212	Inland Water Passenger Transportation	17.12	15.87	1.69	28.02	11.61	255.38	0.00
483111	Deep Sea Freight Transportation	12.29	11.44	14.77	16.72	0.00	0.00	0.43
488310	Port and Harbor Operations	9.44	8.75	8.29	15.26	4.78	8.76	0.00
488320	Marine Cargo Handling	7.80	8.87	4.16	12.14	40.77	17.65	0.04
483114	Coastal and Great Lakes Passenger Transportation	6.33	5.87	0.05	5.48	155.13	0.00	0.00
485113	Bus and Other Motor Vehicle Transit Systems	5.80	5.37	2.68	12.27	0.00	0.00	0.00
483113	Coastal and Great Lakes Freight Transportation	4.24	17.42	0.03	1.48	133.45	0.00	0.29
485510	Charter Bus Industry	3.64	3.38	1.54	7.86	0.00	0.00	0.00
481211	Nonscheduled Chartered Passenger Air Transportation	2.47	2.29	1.16	1.27	46.02	0.00	1.60
532111	Passenger Car Rental	1.93	1.80	3.15	1.58	0.06	0.05	0.54
	Total	1.35	1.45	1.47	1.13	5.42	1.67	0.92

Industry	Description	5 Parish Region	New Orleans MSA	Jefferson Parish, LA	Orleans Parish, LA	Plaquemines Parish, LA	St. Bernard Parish, LA	St. Tammany Parish, LA
488991	Packing and Crating	1.50	1.39	0.54	3.33	0.00	0.00	0.00
562111	Solid Waste Collection	1.36	1.30	1.71	0.99	1.72	1.89	1.28
532120	Truck, Utility Trailer, and RV (Recreational Vehicle) Rental and Leasing	1.18	1.14	1.69	0.89	4.41	0.00	0.34
488510	Freight Transportation Arrangement	1.17	1.16	1.61	1.11	0.00	0.00	0.64
488119	Other Airport Operations	1.00	0.93	2.48	0.09	0.00	0.00	0.00
531130	Lessors of Miniwarehouses and Self-Storage Units	0.99	1.01	1.41	0.68	1.26	0.17	0.80
488999	All Other Support Activities for Transportation	0.84	0.78	0.39	1.68	0.00	0.00	0.20
492110	Couriers and Express Delivery Services	0.84	0.85	0.81	1.01	0.10	0.21	0.71
484210	Used Household and Office Goods Moving	0.79	0.79	1.12	0.72	0.00	0.00	0.47
488490	Other Support Activities for Road Transportation	0.79	0.74	1.17	0.01	0.15	0.00	1.88
484220	Specialized Freight (except Used Goods) Trucking, Local	0.76	0.74	1.03	0.11	1.06	0.96	1.52
492210	Local Messengers and Local Delivery	0.69	0.81	0.91	0.22	0.24	0.26	1.34
484122	General Freight Trucking, Long-Distance, Less Than Truckload	0.62	0.84	1.03	0.31	2.48	0.03	0.20
484110	General Freight Trucking, Local	0.59	0.62	0.74	0.46	0.63	0.82	0.53
485410	School and Employee Bus Transportation	0.55	0.53	0.45	0.98	0.00	0.00	0.01
481111	Scheduled Passenger Air Transportation	0.52	0.48	1.34	0.00	0.00	0.00	0.00
485991	Special Needs Transportation	0.51	0.48	1.17	0.15	0.00	0.00	0.01
484230	Specialized Freight (except Used Goods) Trucking, Long-Distance	0.47	0.79	0.35	0.65	0.75	0.00	0.36
488190	Other Support Activities for Air Transportation	0.44	0.41	0.81	0.21	0.70	0.99	0.01
481112	Scheduled Freight Air Transportation	0.36	0.34	0.93	0.00	0.00	0.00	0.00
	Total	1.35	1.45	1.47	1.13	5.42	1.67	0.92

Industry	Description	5 Parish Region	New Orleans MSA	Jefferson Parish, LA	Orleans Parish, LA	Plaquemines Parish, LA	St. Bernard Parish, LA	St. Tammany Parish, LA
488210	Support Activities for Rail Transportation	0.35	0.61	0.10	0.51	1.85	0.00	0.38
484121	General Freight Trucking, Long-Distance, Truckload	0.31	0.45	0.22	0.17	0.70	4.49	0.22
485210	Interurban and Rural Bus Transportation	0.28	0.26	0.00	0.22	0.00	0.00	1.08
483112	Deep Sea Passenger Transportation	0.12	0.11	0.00	0.04	0.81	0.00	0.47
481212	Nonscheduled Chartered Freight Air Transportation	0.02	0.01	0.00	0.04	0.00	0.00	0.00
488111	Air Traffic Control	0.00	0.00	0.00	0.00	0.00	0.00	0.00
485112	Commuter Rail Systems	0.00	0.00	0.00	0.00	0.00	0.00	0.00
485119	Other Urban Transit Systems	0.00	0.00	0.00	0.00	0.00	0.00	0.00
485111	Mixed Mode Transit Systems	0.00	0.00	0.00	0.00	0.00	0.00	0.00
481219	Other Nonscheduled Air Transportation	0.00	0.00	0.00	0.00	0.00	0.00	0.00
	Total	1.35	1.45	1.47	1.13	5.42	1.67	0.92

Source: QCEW Employees - Emsi 2017.4 Class of Worker

Shift Share Breakdown - Job Change



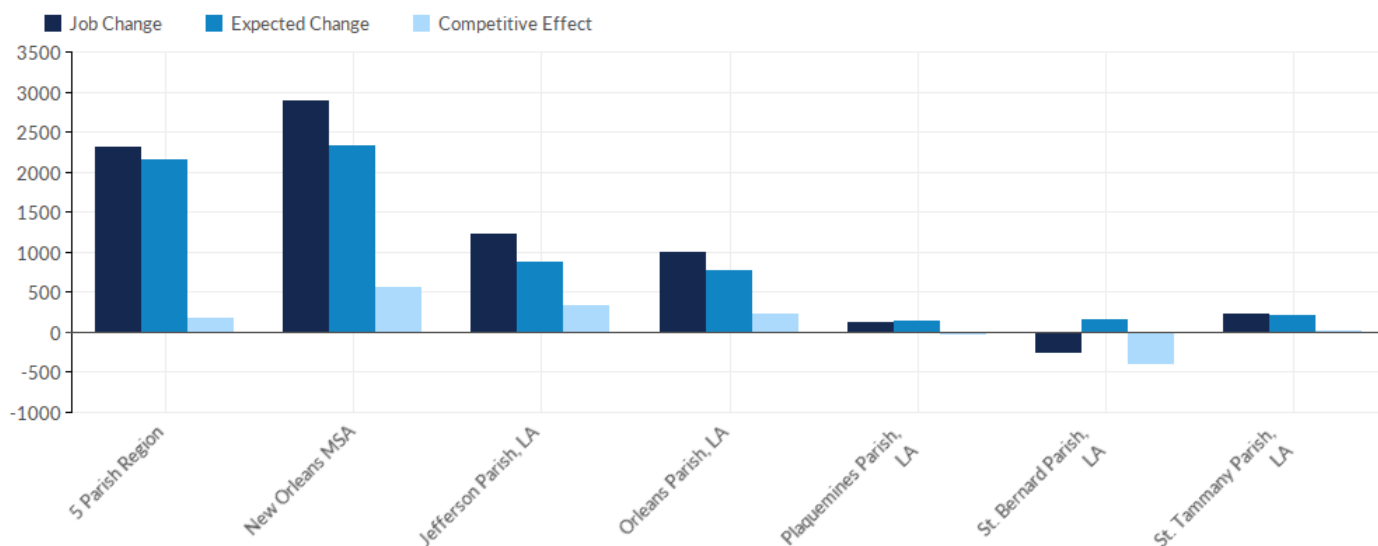
Industry	Description	5 Parish Region	New Orleans MSA	Jefferson Parish, LA	Orleans Parish, LA	Plaquemines Parish, LA	St. Bernard Parish, LA	St. Tammany Parish, LA
483211	Inland Water Freight Transportation	562	514	281	14	156	52	59
488390	Other Support Activities for Water Transportation	362	287	251	-58	90	-1	80
488320	Marine Cargo Handling	315	381	234	276	-98	-59	-37
532111	Passenger Car Rental	298	289	128	162	1	0	7
485410	School and Employee Bus Transportation	254	265	-8	262	0	0	1
481111	Scheduled Passenger Air Transportation	219	219	219	0	0	0	0
483111	Deep Sea Freight Transportation	210	211	90	146	-2	0	-24
492110	Couriers and Express Delivery Services	173	187	-35	89	2	9	108
532120	Truck, Utility Trailer, and RV (Recreational Vehicle) Rental and Leasing	126	133	71	42	6	0	7
485991	Special Needs Transportation	119	118	107	12	0	0	0
485510	Charter Bus Industry	119	119	36	89	0	0	-6
485113	Bus and Other Motor Vehicle Transit Systems	105	105	24	81	0	0	0
	Total	2,317	2,885	1,218	1,001	118	-244	224

Industry	Description	5 Parish Region	New Orleans MSA	Jefferson Parish, LA	Orleans Parish, LA	Plaquemines Parish, LA	St. Bernard Parish, LA	St. Tammany Parish, LA
483114	Coastal and Great Lakes Passenger Transportation	105	105	-2	56	51	-1	0
484210	Used Household and Office Goods Moving	96	108	70	59	0	0	-32
484121	General Freight Trucking, Long-Distance, Truckload	89	153	-28	59	-5	78	-16
488190	Other Support Activities for Air Transportation	77	75	77	-10	4	8	-2
488510	Freight Transportation Arrangement	50	66	59	-34	-1	-10	36
488490	Other Support Activities for Road Transportation	34	36	5	-15	1	0	43
562111	Solid Waste Collection	29	13	192	84	-8	-160	-79
481211	Nonscheduled Chartered Passenger Air Transportation	29	29	0	11	19	-16	16
492210	Local Messengers and Local Delivery	25	65	4	-21	0	1	40
531130	Lessors of Miniwarehouses and Self-Storage Units	21	27	1	17	-1	-4	8
488210	Support Activities for Rail Transportation	9	44	-8	14	5	-9	6
481112	Scheduled Freight Air Transportation	4	4	4	0	0	0	0
484110	General Freight Trucking, Local	3	41	54	-78	11	7	10
485119	Other Urban Transit Systems	0	0	0	0	0	0	0
488111	Air Traffic Control	0	0	0	0	0	0	0
485112	Commuter Rail Systems	0	0	0	0	0	0	0
481219	Other Nonscheduled Air Transportation	0	0	0	0	0	0	0
481212	Nonscheduled Chartered Freight Air Transportation	-1	-1	0	-1	0	0	0
488310	Port and Harbor Operations	-2	-5	16	-17	3	-4	0
485111	Mixed Mode Transit Systems	-5	-5	0	-5	0	0	0
485210	Interurban and Rural Bus Transportation	-8	-8	-1	-19	0	0	12
	Total	2,317	2,885	1,218	1,001	118	-244	224

Industry	Description	5 Parish Region	New Orleans MSA	Jefferson Parish, LA	Orleans Parish, LA	Plaquemines Parish, LA	St. Bernard Parish, LA	St. Tammany Parish, LA
488991	Packing and Crating	-12	-12	2	-13	0	0	0
483113	Coastal and Great Lakes Freight Transportation	-21	204	-36	-4	83	0	-65
488119	Other Airport Operations	-24	-25	-6	1	0	0	-20
483112	Deep Sea Passenger Transportation	-31	-31	-7	0	-27	0	3
488999	All Other Support Activities for Transportation	-50	-50	6	-58	0	0	1
484220	Specialized Freight (except Used Goods) Trucking, Local	-59	-54	-71	-22	-2	2	33
484230	Specialized Freight (except Used Goods) Trucking, Long-Distance	-60	-5	-19	8	2	-74	23
483212	Inland Water Passenger Transportation	-193	-193	-66	-8	-54	-65	0
484122	General Freight Trucking, Long-Distance, Less Than Truckload	-286	-113	-238	-64	5	1	11
488330	Navigational Services to Shipping	-364	-412	-187	-55	-123	-1	1
	Total	2,317	2,885	1,218	1,001	118	-244	224

Source: QCEW Employees - Emsi 2017.4 Class of Worker

Shift Share Breakdown - Expected Change



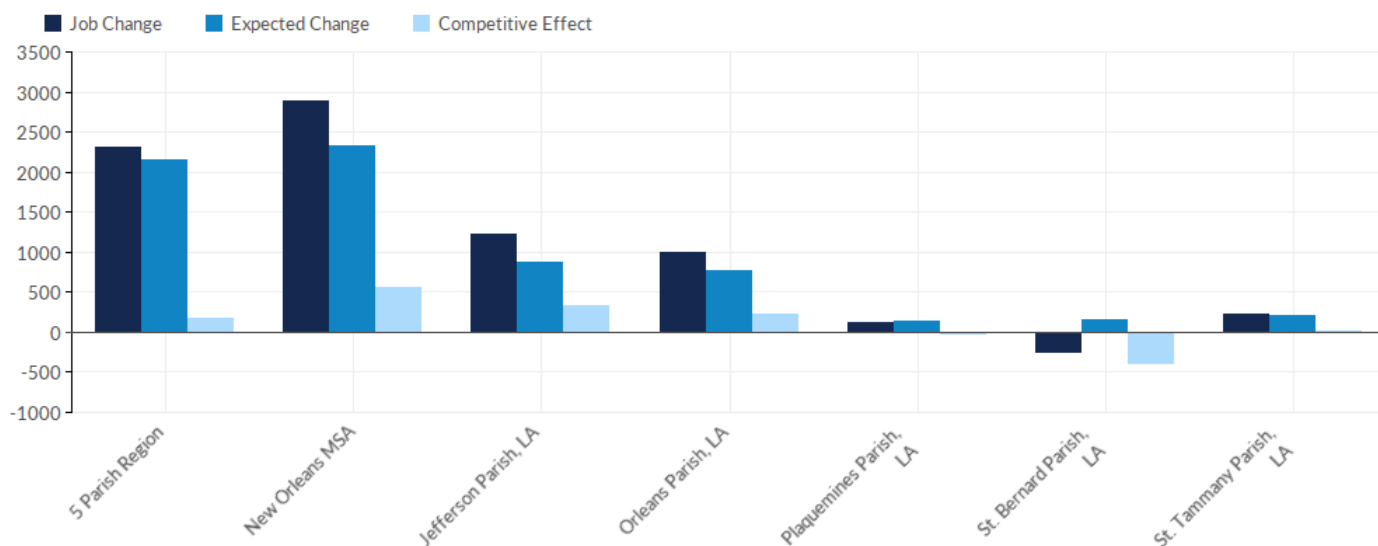
Industry	Description	5 Parish Region	New Orleans MSA	Jefferson Parish, LA	Orleans Parish, LA	Plaquemines Parish, LA	St. Bernard Parish, LA	St. Tammany Parish, LA
488320	Marine Cargo Handling	598	736	49	323	148	61	17
492110	Couriers and Express Delivery Services	299	327	132	138	1	0	28
488510	Freight Transportation Arrangement	193	205	96	84	0	2	11
484122	General Freight Trucking, Long-Distance, Less Than Truckload	176	192	125	36	11	0	4
488119	Other Airport Operations	152	152	138	4	0	0	9
562111	Solid Waste Collection	151	161	34	26	7	41	44
483211	Inland Water Freight Transportation	128	137	48	4	25	2	49
485113	Bus and Other Motor Vehicle Transit Systems	121	121	21	100	0	0	0
532111	Passenger Car Rental	115	118	86	22	0	0	7
484110	General Freight Trucking, Local	110	116	42	50	1	2	15
484220	Specialized Freight (except Used Goods) Trucking, Local	85	88	50	7	3	2	23
532120	Truck, Utility Trailer, and RV (Recreational Vehicle) Rental and Leasing	74	76	41	20	10	0	3
	Total	2,146	2,328	881	767	136	148	216

Industry	Description	5 Parish Region	New Orleans MSA	Jefferson Parish, LA	Orleans Parish, LA	Plaquemines Parish, LA	St. Bernard Parish, LA	St. Tammany Parish, LA
484230	Specialized Freight (except Used Goods) Trucking, Long-Distance	73	106	21	29	2	19	2
492210	Local Messengers and Local Delivery	58	58	34	18	0	0	6
488999	All Other Support Activities for Transportation	40	40	0	40	0	0	0
484121	General Freight Trucking, Long-Distance, Truckload	38	59	15	5	3	7	7
483212	Inland Water Passenger Transportation	37	37	6	14	5	12	0
484210	Used Household and Office Goods Moving	33	35	15	7	0	0	11
481111	Scheduled Passenger Air Transportation	33	33	32	0	0	0	0
531130	Lessors of Miniwarehouses and Self-Storage Units	21	22	13	4	1	1	2
488210	Support Activities for Rail Transportation	15	15	6	4	0	4	1
488490	Other Support Activities for Road Transportation	15	15	12	3	0	0	0
488190	Other Support Activities for Air Transportation	13	13	6	6	0	0	0
488991	Packing and Crating	12	12	1	10	0	0	0
483113	Coastal and Great Lakes Freight Transportation	11	31	2	2	3	0	4
485410	School and Employee Bus Transportation	9	9	9	0	0	0	0
483114	Coastal and Great Lakes Passenger Transportation	4	4	0	0	4	0	0
483112	Deep Sea Passenger Transportation	3	3	1	0	2	0	0
485991	Special Needs Transportation	1	2	1	0	0	0	0
481112	Scheduled Freight Air Transportation	1	1	1	0	0	0	0
485210	Interurban and Rural Bus Transportation	0	0	0	0	0	0	0
	Total	2,146	2,328	881	767	136	148	216

Industry	Description	5 Parish Region	New Orleans MSA	Jefferson Parish, LA	Orleans Parish, LA	Plaquemines Parish, LA	St. Bernard Parish, LA	St. Tammany Parish, LA
481212	Nonscheduled Chartered Freight Air Transportation	0	0	0	0	0	0	0
485112	Commuter Rail Systems	0	0	0	0	0	0	0
488111	Air Traffic Control	0	0	0	0	0	0	0
485119	Other Urban Transit Systems	0	0	0	0	0	0	0
481219	Other Nonscheduled Air Transportation	0	0	0	0	0	0	0
485111	Mixed Mode Transit Systems	0	0	0	0	0	0	0
485510	Charter Bus Industry	-4	-4	0	-3	0	0	0
481211	Nonscheduled Chartered Passenger Air Transportation	-10	-10	-2	-2	-5	-1	-1
483111	Deep Sea Freight Transportation	-21	-21	-10	-8	0	0	-2
488390	Other Support Activities for Water Transportation	-110	-197	-42	-26	-39	0	-3
488310	Port and Harbor Operations	-133	-135	-34	-94	-1	-5	0
488330	Navigational Services to Shipping	-195	-230	-66	-57	-47	0	-24
	Total	2,146	2,328	881	767	136	148	216

Source: QCEW Employees - Emsi 2017.4 Class of Worker

Shift Share Breakdown - Competitive Effect



Industry	Description	5 Parish Region	New Orleans MSA	Jefferson Parish, LA	Orleans Parish, LA	Plaquemines Parish, LA	St. Bernard Parish, LA	St. Tammany Parish, LA
488390	Other Support Activities for Water Transportation	472	484	293	-33	129	0	83
483211	Inland Water Freight Transportation	434	378	232	10	131	50	10
485410	School and Employee Bus Transportation	245	256	-18	262	0	0	1
483111	Deep Sea Freight Transportation	230	232	100	154	-2	0	-22
481111	Scheduled Passenger Air Transportation	186	186	186	0	0	0	0
532111	Passenger Car Rental	183	171	42	141	1	0	-1
488310	Port and Harbor Operations	131	130	50	77	3	1	0
485510	Charter Bus Industry	123	123	36	92	0	0	-6
485991	Special Needs Transportation	118	117	106	12	0	0	0
483114	Coastal and Great Lakes Passenger Transportation	100	100	-2	56	47	-1	0
488190	Other Support Activities for Air Transportation	64	62	71	-16	4	8	-2
484210	Used Household and Office Goods Moving	63	73	55	52	0	0	-43
	Total	171	557	337	233	-18	-392	9

Industry	Description	5 Parish Region	New Orleans MSA	Jefferson Parish, LA	Orleans Parish, LA	Plaquemines Parish, LA	St. Bernard Parish, LA	St. Tammany Parish, LA
532120	Truck, Utility Trailer, and RV (Recreational Vehicle) Rental and Leasing	52	57	30	22	-4	0	4
484121	General Freight Trucking, Long-Distance, Truckload	50	93	-44	54	-8	71	-23
481211	Nonscheduled Chartered Passenger Air Transportation	40	40	2	13	24	-15	16
488490	Other Support Activities for Road Transportation	19	21	-6	-18	0	0	43
481112	Scheduled Freight Air Transportation	3	3	3	0	0	0	0
531130	Lessors of Miniwarehouses and Self-Storage Units	1	4	-12	13	-2	-4	6
485112	Commuter Rail Systems	0	0	0	0	0	0	0
485119	Other Urban Transit Systems	0	0	0	0	0	0	0
481219	Other Nonscheduled Air Transportation	0	0	0	0	0	0	0
488111	Air Traffic Control	0	0	0	0	0	0	0
481212	Nonscheduled Chartered Freight Air Transportation	-1	-1	0	-1	0	0	0
485111	Mixed Mode Transit Systems	-4	-4	0	-4	0	0	0
488210	Support Activities for Rail Transportation	-7	29	-14	10	5	-13	6
485210	Interurban and Rural Bus Transportation	-8	-8	-1	-19	0	0	12
485113	Bus and Other Motor Vehicle Transit Systems	-16	-16	3	-20	0	0	0
488991	Packing and Crating	-23	-23	1	-24	0	0	0
483113	Coastal and Great Lakes Freight Transportation	-32	172	-38	-5	80	0	-69
483112	Deep Sea Passenger Transportation	-33	-33	-8	0	-29	0	3
492210	Local Messengers and Local Delivery	-34	6	-29	-40	0	1	34
488999	All Other Support Activities for Transportation	-90	-90	6	-97	0	0	1
	Total	171	557	337	233	-18	-392	9

Industry	Description	5 Parish Region	New Orleans MSA	Jefferson Parish, LA	Orleans Parish, LA	Plaquemines Parish, LA	St. Bernard Parish, LA	St. Tammany Parish, LA
484110	General Freight Trucking, Local	-106	-74	12	-128	10	6	-6
562111	Solid Waste Collection	-122	-148	158	58	-15	-201	-123
492110	Couriers and Express Delivery Services	-127	-140	-167	-49	1	9	79
484230	Specialized Freight (except Used Goods) Trucking, Long-Distance	-133	-110	-41	-21	0	-93	21
488510	Freight Transportation Arrangement	-143	-139	-37	-118	-1	-13	25
484220	Specialized Freight (except Used Goods) Trucking, Local	-144	-142	-121	-30	-5	1	10
488330	Navigational Services to Shipping	-169	-182	-121	2	-76	0	26
488119	Other Airport Operations	-176	-177	-144	-3	0	0	-29
483212	Inland Water Passenger Transportation	-230	-230	-72	-23	-59	-77	0
488320	Marine Cargo Handling	-282	-355	185	-47	-246	-120	-54
484122	General Freight Trucking, Long-Distance, Less Than Truckload	-462	-305	-362	-100	-6	0	6
	Total	171	557	337	233	-18	-392	9

Source: QCEW Employees - Emsi 2017.4 Class of Worker

Appendix A - Industries

Code	Description
481111	Scheduled Passenger Air Transportation
481112	Scheduled Freight Air Transportation
481211	Nonscheduled Chartered Passenger Air Transportation
481212	Nonscheduled Chartered Freight Air Transportation
481219	Other Nonscheduled Air Transportation
483111	Deep Sea Freight Transportation
483112	Deep Sea Passenger Transportation
483113	Coastal and Great Lakes Freight Transportation
483114	Coastal and Great Lakes Passenger Transportation
483211	Inland Water Freight Transportation
483212	Inland Water Passenger Transportation
484110	General Freight Trucking, Local
484121	General Freight Trucking, Long-Distance, Truckload
484122	General Freight Trucking, Long-Distance, Less Than Truckload
484210	Used Household and Office Goods Moving
484220	Specialized Freight (except Used Goods) Trucking, Local
484230	Specialized Freight (except Used Goods) Trucking, Long-Distance
485111	Mixed Mode Transit Systems
485112	Commuter Rail Systems
485113	Bus and Other Motor Vehicle Transit Systems
485119	Other Urban Transit Systems
485210	Interurban and Rural Bus Transportation
485410	School and Employee Bus Transportation
485510	Charter Bus Industry
485991	Special Needs Transportation
488111	Air Traffic Control
488119	Other Airport Operations
488190	Other Support Activities for Air Transportation
488210	Support Activities for Rail Transportation

Code	Description
488310	Port and Harbor Operations
488320	Marine Cargo Handling
488330	Navigational Services to Shipping
488390	Other Support Activities for Water Transportation
488490	Other Support Activities for Road Transportation
488510	Freight Transportation Arrangement
488991	Packing and Crating
488999	All Other Support Activities for Transportation
492110	Couriers and Express Delivery Services
492210	Local Messengers and Local Delivery
531130	Lessors of Miniwarehouses and Self-Storage Units
532111	Passenger Car Rental
532120	Truck, Utility Trailer, and RV (Recreational Vehicle) Rental and Leasing
562111	Solid Waste Collection

Appendix B - Data Sources and Calculations

Industry Data

Emsi industry data have various sources depending on the class of worker. (1) For QCEW Employees, Emsi primarily uses the QCEW (Quarterly Census of Employment and Wages), with supplemental estimates from County Business Patterns. (2) Non-QCEW employees data are based on a number of sources including QCEW, Current Employment Statistics, County Business Patterns, BEA State and Local Personal Income reports, the National Industry-Occupation Employment Matrix (NIOEM), the American Community Survey, and Railroad Retirement Board statistics. (3) Self-Employed and Extended Proprietor classes of worker data are primarily based on the American Community Survey, Nonemployer Statistics, and BEA State and Local Personal Income Reports. Projections for QCEW and Non-QCEW Employees are informed by NIOEM and long-term industry projections published by individual states.

Staffing Patterns Data

The staffing pattern data in this report are compiled from several sources using a specialized process. For QCEW and Non-QCEW Employees classes of worker, sources include Occupational Employment Statistics, the National Industry-Occupation Employment Matrix, and the American Community Survey. For the Self-Employed and Extended Proprietors classes of worker, the primary source is the American Community Survey, with a small amount of information from Occupational Employment Statistics.

State Data Sources

This report uses state data from the following agencies: Louisiana Department of Labor