

Regional Comparison by Industry

Comparing Environmental Management across 7 Regions

Emsi Q4 2017 Data Set

December 2017

Regional Planning Commission



10 Veterans Blvd.
New Orleans, Louisiana 70124

Parameters

Industries

38 items selected. See Appendix A for details.

Region

Code	Description	Level
Group	5 Parish Region	FIPS
Group	New Orleans MSA	FIPS
22051	Jefferson Parish, LA	FIPS
22071	Orleans Parish, LA	FIPS
22075	Plaquemines Parish, LA	FIPS
22087	St. Bernard Parish, LA	FIPS
22103	St. Tammany Parish, LA	FIPS

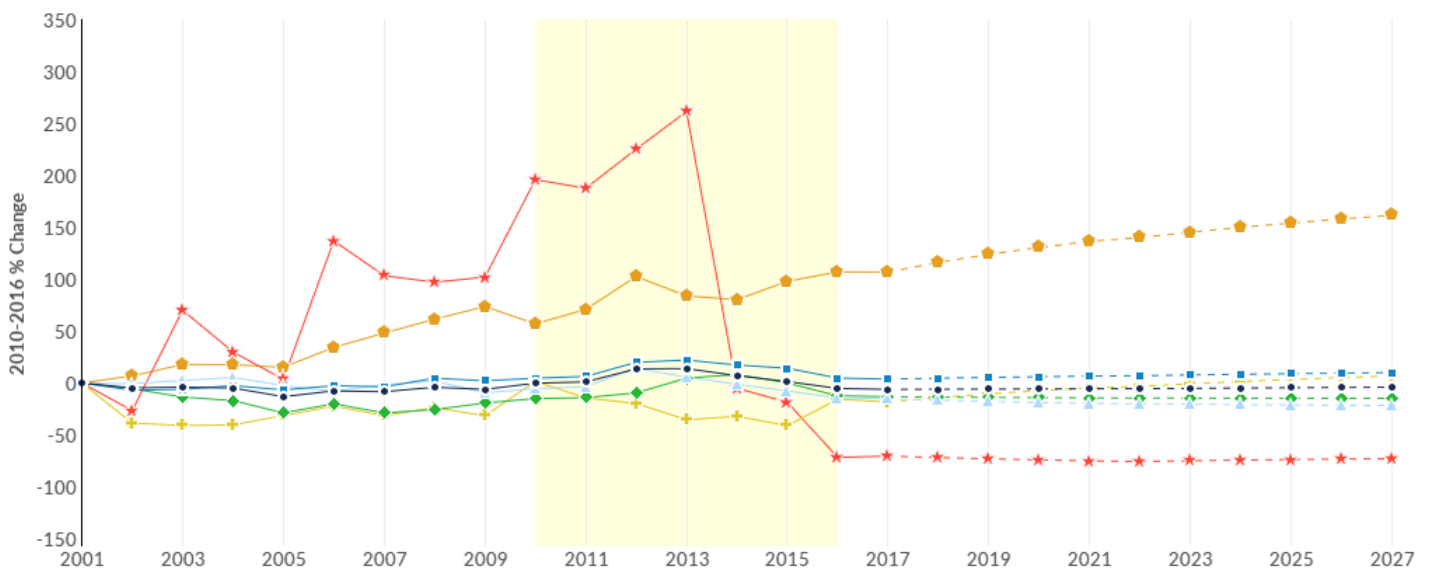
Timeframe

2010 - 2016

Datarun

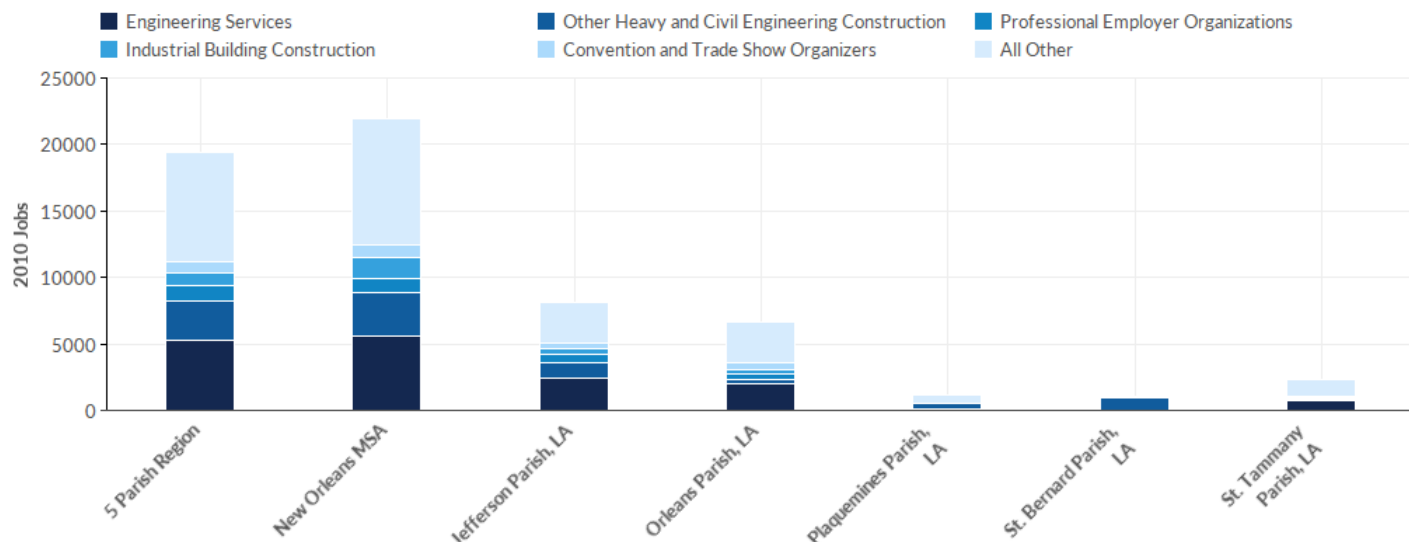
2017.4 - QCEW Employees

Industry Change Summary



Region	2010 Jobs	2016 Jobs	Change	% Change	2017 Average Earnings	2017 Payrolled Business Locations
● 5 Parish Region	19,392	18,399	-993	-5%	\$85,192	2,156
■ New Orleans MSA	21,951	21,984	33	0%	\$84,472	2,295
▲ Jefferson Parish, LA	8,168	7,401	-767	-9%	\$84,445	732
◆ Orleans Parish, LA	6,620	6,830	210	3%	\$86,041	803
⊕ Plaquemines Parish, LA	1,136	944	-192	-17%	\$80,403	74
★ St. Bernard Parish, LA	1,104	105	-999	-90%	\$74,763	25
⬠ St. Tammany Parish, LA	2,364	3,117	753	32%	\$86,867	523

Industry Breakdown - 2010 Jobs

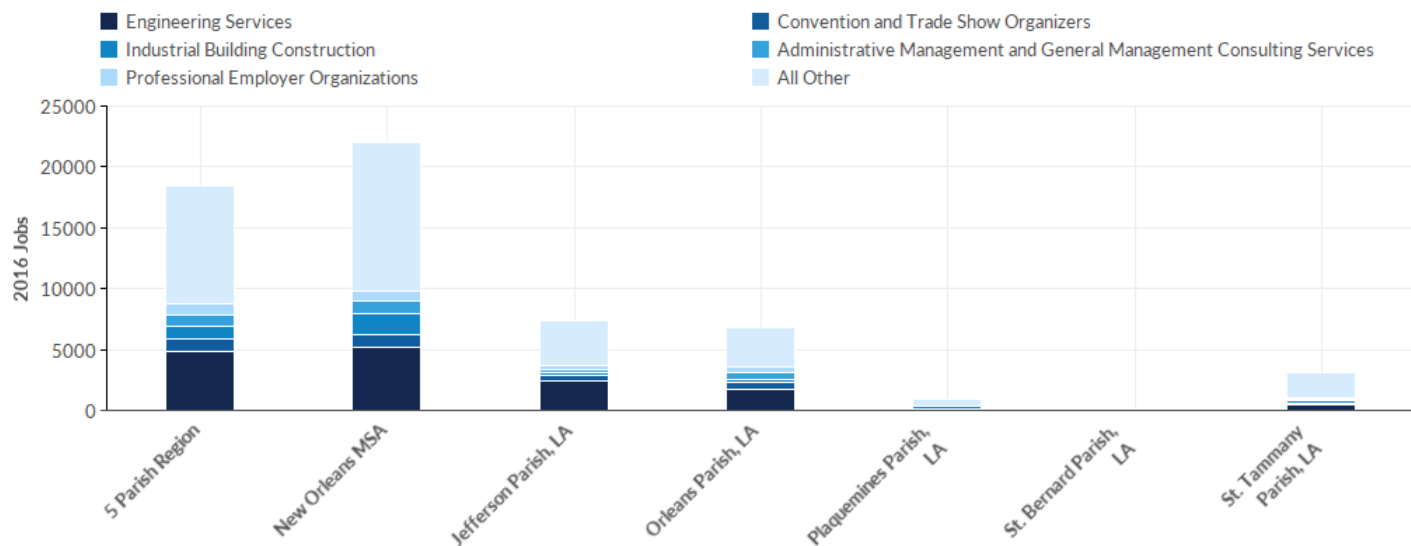


Industry	Description	5 Parish Region	New Orleans MSA	Jefferson Parish, LA	Orleans Parish, LA	Plaquemines Parish, LA	St. Bernard Parish, LA	St. Tammany Parish, LA
541330	Engineering Services	5,296	5,587	2,438	2,013	107	15	723
237990	Other Heavy and Civil Engineering Construction	2,948	3,287	1,150	302	453	923	120
561330	Professional Employer Organizations	1,092	1,093	649	384	<10	0	58
236210	Industrial Building Construction	961	1,546	431	403	<10	22	104
561920	Convention and Trade Show Organizers	903	903	392	476	0	0	35
541214	Payroll Services	859	871	206	596	0	0	57
561311	Employment Placement Agencies	685	694	456	205	0	0	24
237120	Oil and Gas Pipeline and Related Structures Construction	652	1,521	198	127	82	114	131
541611	Administrative Management and General Management Consulting Services	647	659	225	301	<10	<10	114
541310	Architectural Services	637	646	71	486	0	<10	75
541690	Other Scientific and Technical Consulting Services	558	606	166	187	70	<10	129
	Total	19,392	21,951	8,168	6,620	1,136	1,104	2,364

Industry	Description	5 Parish Region	New Orleans MSA	Jefferson Parish, LA	Orleans Parish, LA	Plaquemines Parish, LA	St. Bernard Parish, LA	St. Tammany Parish, LA
541990	All Other Professional, Scientific, and Technical Services	526	582	191	158	38	<10	135
237110	Water and Sewer Line and Related Structures Construction	462	466	234	19	<10	<10	202
221310	Water Supply and Irrigation Systems	363	364	<10	26	279	0	56
541620	Environmental Consulting Services	304	310	195	73	10	<10	25
561422	Telemarketing Bureaus and Other Contact Centers	302	302	108	128	0	0	65
541370	Surveying and Mapping (except Geophysical) Services	268	279	149	41	0	0	78
561210	Facilities Support Services	212	291	0	128	75	0	<10
541618	Other Management Consulting Services	207	209	90	116	<10	0	<10
332996	Fabricated Pipe and Pipe Fitting Manufacturing	194	194	185	<10	0	0	0
561499	All Other Business Support Services	185	193	73	108	<10	0	<10
541320	Landscape Architectural Services	171	172	20	141	0	0	<10
237130	Power and Communication Line and Related Structures Construction	165	166	150	<10	0	<10	<10
541614	Process, Physical Distribution, and Logistics Consulting Services	152	174	71	28	<10	0	49
541199	All Other Legal Services	151	153	77	51	0	<10	20
533110	Lessors of Nonfinancial Intangible Assets (except Copyrighted Works)	149	157	59	27	0	0	63
551112	Offices of Other Holding Companies	138	156	114	21	0	<10	<10
327999	All Other Miscellaneous Nonmetallic Mineral Product Manufacturing	68	68	40	0	0	0	28
	Total	19,392	21,951	8,168	6,620	1,136	1,104	2,364

Industry	Description	5 Parish Region	New Orleans MSA	Jefferson Parish, LA	Orleans Parish, LA	Plaquemines Parish, LA	St. Bernard Parish, LA	St. Tammany Parish, LA
541612	Human Resources Consulting Services	63	73	11	42	0	0	11
561421	Telephone Answering Services	28	28	11	<10	0	0	16
327991	Cut Stone and Stone Product Manufacturing	25	28	<10	10	0	0	13
541930	Translation and Interpretation Services	14	15	<10	<10	0	0	<10
327993	Mineral Wool Manufacturing	<10	<10	0	<10	0	<10	0
551111	Offices of Bank Holding Companies	<10	<10	0	0	0	0	<10
324122	Asphalt Shingle and Coating Materials Manufacturing	<10	<10	<10	0	0	0	0
332913	Plumbing Fixture Fitting and Trim Manufacturing	0	0	0	0	0	0	0
221330	Steam and Air-Conditioning Supply	0	0	0	0	0	0	0
324121	Asphalt Paving Mixture and Block Manufacturing	0	149	0	0	0	0	0
	Total	19,392	21,951	8,168	6,620	1,136	1,104	2,364

Industry Breakdown - 2016 Jobs

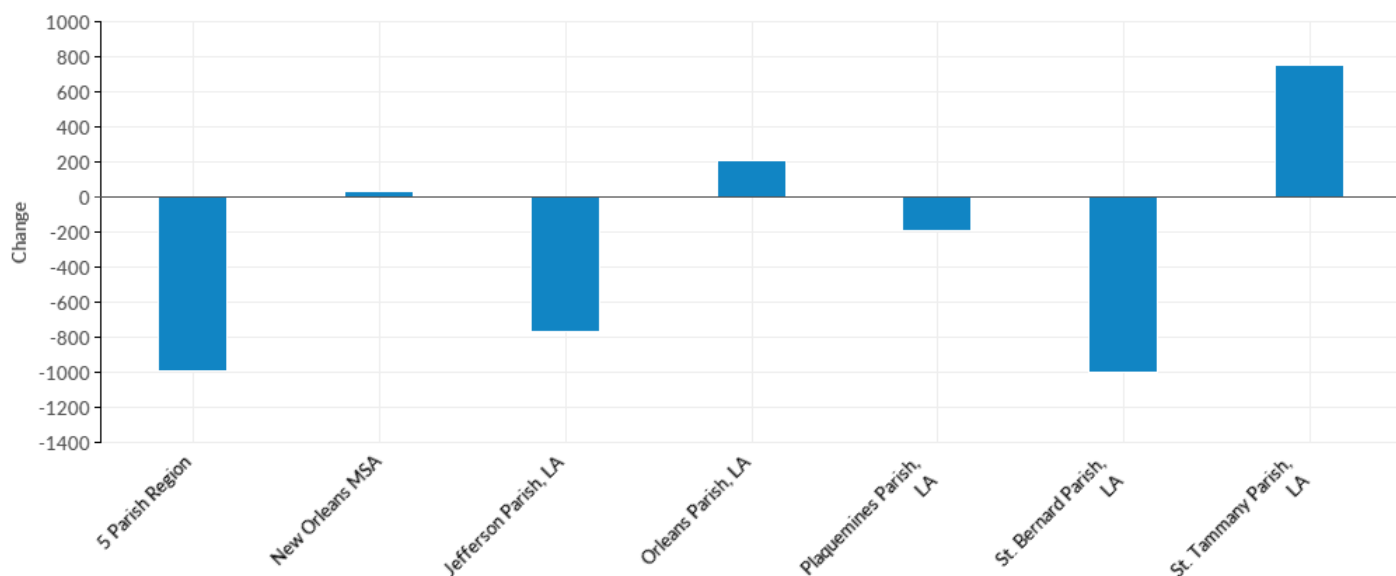


Industry	Description	5 Parish Region	New Orleans MSA	Jefferson Parish, LA	Orleans Parish, LA	Plaquemines Parish, LA	St. Bernard Parish, LA	St. Tammany Parish, LA
541330	Engineering Services	4,799	5,230	2,457	1,713	111	<10	510
561920	Convention and Trade Show Organizers	1,046	1,046	394	597	0	<10	54
236210	Industrial Building Construction	1,017	1,696	266	240	262	<10	245
541611	Administrative Management and General Management Consulting Services	1,003	1,015	266	568	<10	<10	166
561330	Professional Employer Organizations	848	863	332	455	<10	0	54
237130	Power and Communication Line and Related Structures Construction	747	748	569	29	0	0	149
237990	Other Heavy and Civil Engineering Construction	727	1,045	267	83	121	35	221
541990	All Other Professional, Scientific, and Technical Services	661	941	232	222	14	<10	190
541310	Architectural Services	602	608	67	467	0	<10	64
541214	Payroll Services	598	673	236	100	56	0	207
561311	Employment Placement Agencies	592	593	311	167	0	0	114
	Total	18,399	21,984	7,401	6,830	944	105	3,117

Industry	Description	5 Parish Region	New Orleans MSA	Jefferson Parish, LA	Orleans Parish, LA	Plaquemines Parish, LA	St. Bernard Parish, LA	St. Tammany Parish, LA
237110	Water and Sewer Line and Related Structures Construction	579	653	192	160	<10	0	227
541614	Process, Physical Distribution, and Logistics Consulting Services	525	559	178	287	<10	0	59
237120	Oil and Gas Pipeline and Related Structures Construction	522	1,761	167	106	91	0	158
541690	Other Scientific and Technical Consulting Services	501	511	176	183	<10	<10	136
561210	Facilities Support Services	392	462	128	218	<10	<10	37
221310	Water Supply and Irrigation Systems	377	377	0	26	262	0	89
541370	Surveying and Mapping (except Geophysical) Services	335	344	121	132	0	0	82
541620	Environmental Consulting Services	299	300	161	67	<10	<10	68
561422	Telemarketing Bureaus and Other Contact Centers	281	281	41	193	0	0	47
561499	All Other Business Support Services	280	300	145	124	<10	<10	<10
541199	All Other Legal Services	278	278	97	146	0	11	24
541618	Other Management Consulting Services	259	259	88	135	<10	0	34
551112	Offices of Other Holding Companies	242	243	131	94	0	10	<10
541320	Landscape Architectural Services	192	198	25	145	0	0	22
533110	Lessors of Nonfinancial Intangible Assets (except Copyrighted Works)	187	187	121	16	0	0	50
332996	Fabricated Pipe and Pipe Fitting Manufacturing	154	159	71	64	0	19	0
561421	Telephone Answering Services	93	93	23	22	0	0	48
541612	Human Resources Consulting Services	91	93	44	43	0	0	<10
	Total	18,399	21,984	7,401	6,830	944	105	3,117

Industry	Description	5 Parish Region	New Orleans MSA	Jefferson Parish, LA	Orleans Parish, LA	Plaquemines Parish, LA	St. Bernard Parish, LA	St. Tammany Parish, LA
327991	Cut Stone and Stone Product Manufacturing	70	104	31	0	<10	0	38
327999	All Other Miscellaneous Nonmetallic Mineral Product Manufacturing	44	46	39	<10	0	0	0
541930	Translation and Interpretation Services	28	28	17	<10	0	0	<10
551111	Offices of Bank Holding Companies	14	14	<10	<10	0	0	0
324121	Asphalt Paving Mixture and Block Manufacturing	11	273	0	11	0	0	0
324122	Asphalt Shingle and Coating Materials Manufacturing	<10	<10	<10	0	0	<10	0
332913	Plumbing Fixture Fitting and Trim Manufacturing	0	0	0	0	0	0	0
327993	Mineral Wool Manufacturing	0	0	0	0	0	0	0
221330	Steam and Air-Conditioning Supply	0	0	0	0	0	0	0
	Total	18,399	21,984	7,401	6,830	944	105	3,117

Industry Breakdown - Change

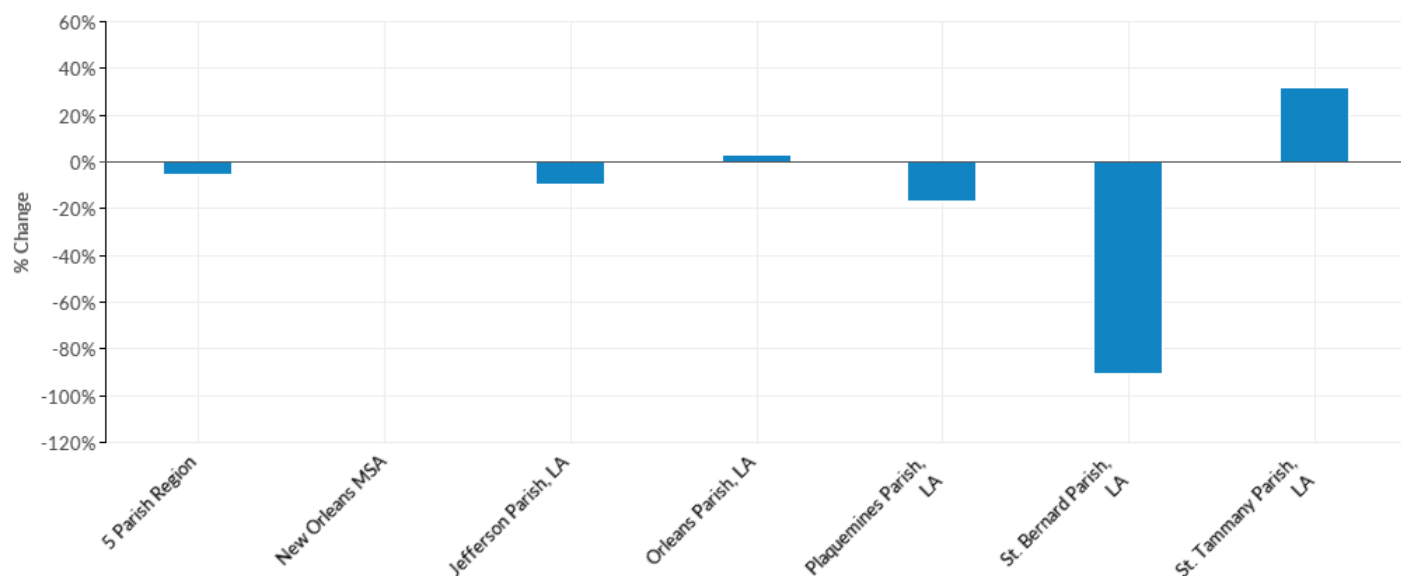


Industry	Description	5 Parish Region	New Orleans MSA	Jefferson Parish, LA	Orleans Parish, LA	Plaquemines Parish, LA	St. Bernard Parish, LA	St. Tammany Parish, LA
237130	Power and Communication Line and Related Structures Construction	582	582	419	--	0	--	--
541614	Process, Physical Distribution, and Logistics Consulting Services	373	385	107	259	--	0	10
541611	Administrative Management and General Management Consulting Services	356	356	41	267	--	--	52
561210	Facilities Support Services	180	171	128	90	--	--	--
561920	Convention and Trade Show Organizers	143	143	2	121	0	--	19
541990	All Other Professional, Scientific, and Technical Services	135	359	41	64	-24	--	55
541199	All Other Legal Services	127	125	20	95	0	--	4
237110	Water and Sewer Line and Related Structures Construction	117	187	-42	141	--	--	25
551112	Offices of Other Holding Companies	104	87	17	73	0	--	--
561499	All Other Business Support Services	95	107	72	16	--	--	--
	Total	-993	33	-767	210	-192	-999	753

Industry	Description	5 Parish Region	New Orleans MSA	Jefferson Parish, LA	Orleans Parish, LA	Plaquemines Parish, LA	St. Bernard Parish, LA	St. Tammany Parish, LA
541370	Surveying and Mapping (except Geophysical) Services	67	65	-28	91	0	0	4
561421	Telephone Answering Services	65	65	12	--	0	0	32
236210	Industrial Building Construction	56	150	-165	-163	--	--	141
541618	Other Management Consulting Services	52	50	-2	19	--	0	--
327991	Cut Stone and Stone Product Manufacturing	45	76	--	-10	--	0	25
533110	Lessors of Nonfinancial Intangible Assets (except Copyrighted Works)	38	30	62	-11	0	0	-13
541612	Human Resources Consulting Services	28	20	33	1	0	0	--
541320	Landscape Architectural Services	21	26	5	4	0	0	--
221310	Water Supply and Irrigation Systems	14	13	--	0	-17	0	33
541930	Translation and Interpretation Services	14	13	--	--	0	0	--
551111	Offices of Bank Holding Companies	--	--	--	--	0	0	--
324121	Asphalt Paving Mixture and Block Manufacturing	11	124	0	11	0	0	0
324122	Asphalt Shingle and Coating Materials Manufacturing	--	--	--	0	0	--	0
332913	Plumbing Fixture Fitting and Trim Manufacturing	0	0	0	0	0	0	0
221330	Steam and Air-Conditioning Supply	0	0	0	0	0	0	0
327993	Mineral Wool Manufacturing	--	--	0	--	0	--	0
541620	Environmental Consulting Services	-5	-10	-34	-6	--	--	43
561422	Telemarketing Bureaus and Other Contact Centers	-21	-21	-67	65	0	0	-18
327999	All Other Miscellaneous Nonmetallic Mineral Product Manufacturing	-24	-22	-1	--	0	0	-28
	Total	-993	33	-767	210	-192	-999	753

Industry	Description	5 Parish Region	New Orleans MSA	Jefferson Parish, LA	Orleans Parish, LA	Plaquemines Parish, LA	St. Bernard Parish, LA	St. Tammany Parish, LA
541310	Architectural Services	-35	-38	-4	-19	0	--	-11
332996	Fabricated Pipe and Pipe Fitting Manufacturing	-40	-35	-114	--	0	19	0
541690	Other Scientific and Technical Consulting Services	-57	-95	10	-4	--	--	7
561311	Employment Placement Agencies	-93	-101	-145	-38	0	0	90
237120	Oil and Gas Pipeline and Related Structures Construction	-130	240	-31	-21	9	-114	27
561330	Professional Employer Organizations	-244	-230	-317	71	--	0	-4
541214	Payroll Services	-261	-198	30	-496	56	0	150
541330	Engineering Services	-497	-357	19	-300	4	--	-213
237990	Other Heavy and Civil Engineering Construction	-2,221	-2,242	-883	-219	-332	-888	101
	Total	-993	33	-767	210	-192	-999	753

Industry Breakdown - % Change

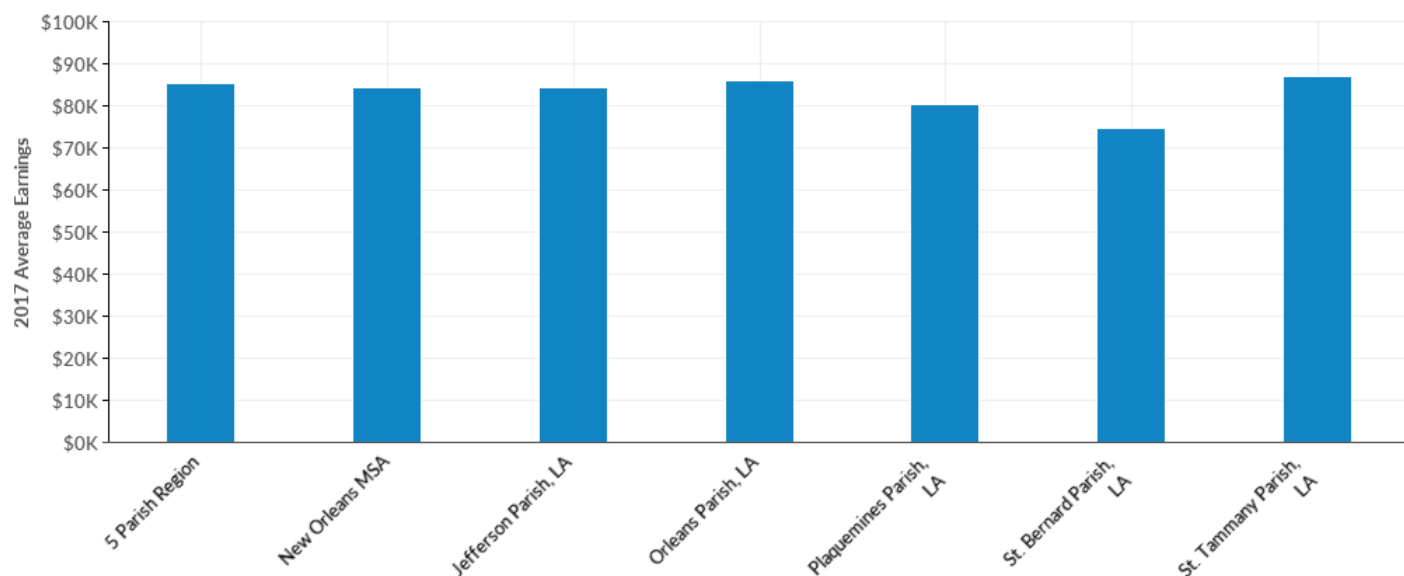


Industry	Description	5 Parish Region	New Orleans MSA	Jefferson Parish, LA	Orleans Parish, LA	Plaquemines Parish, LA	St. Bernard Parish, LA	St. Tammany Parish, LA
551111	Offices of Bank Holding Companies	--	--	--	--	0%	0%	--
237130	Power and Communication Line and Related Structures Construction	353%	351%	279%	--	0%	--	--
541614	Process, Physical Distribution, and Logistics Consulting Services	245%	221%	151%	925%	--	0%	20%
561421	Telephone Answering Services	232%	232%	109%	--	0%	0%	200%
324122	Asphalt Shingle and Coating Materials Manufacturing	--	--	--	0%	0%	--	0%
327991	Cut Stone and Stone Product Manufacturing	180%	271%	--	-100%	--	0%	192%
541930	Translation and Interpretation Services	100%	87%	--	--	0%	0%	--
561210	Facilities Support Services	85%	59%	--	70%	--	--	--
541199	All Other Legal Services	84%	82%	26%	186%	0%	--	20%
551112	Offices of Other Holding Companies	75%	56%	15%	348%	0%	--	--
541611	Administrative Management and General Management Consulting Services	55%	54%	18%	89%	--	--	46%
	Total	-5%	0%	-9%	3%	-17%	-90%	32%

Industry	Description	5 Parish Region	New Orleans MSA	Jefferson Parish, LA	Orleans Parish, LA	Plaquemines Parish, LA	St. Bernard Parish, LA	St. Tammany Parish, LA
561499	All Other Business Support Services	51%	55%	99%	15%	--	--	--
541612	Human Resources Consulting Services	44%	27%	300%	2%	0%	0%	--
541990	All Other Professional, Scientific, and Technical Services	26%	62%	21%	41%	-63%	--	41%
533110	Lessors of Nonfinancial Intangible Assets (except Copyrighted Works)	26%	19%	105%	-41%	0%	0%	-21%
237110	Water and Sewer Line and Related Structures Construction	25%	40%	-18%	742%	--	--	12%
541618	Other Management Consulting Services	25%	24%	-2%	16%	--	0%	--
541370	Surveying and Mapping (except Geophysical) Services	25%	23%	-19%	222%	0%	0%	5%
561920	Convention and Trade Show Organizers	16%	16%	1%	25%	0%	--	54%
541320	Landscape Architectural Services	12%	15%	25%	3%	0%	0%	--
236210	Industrial Building Construction	6%	10%	-38%	-40%	--	--	136%
221310	Water Supply and Irrigation Systems	4%	4%	--	0%	-6%	0%	59%
324121	Asphalt Paving Mixture and Block Manufacturing	--	83%	0%	--	0%	0%	0%
332913	Plumbing Fixture Fitting and Trim Manufacturing	0%	0%	0%	0%	0%	0%	0%
221330	Steam and Air-Conditioning Supply	0%	0%	0%	0%	0%	0%	0%
541620	Environmental Consulting Services	-2%	-3%	-17%	-8%	--	--	172%
541310	Architectural Services	-5%	-6%	-6%	-4%	0%	--	-15%
561422	Telemarketing Bureaus and Other Contact Centers	-7%	-7%	-62%	51%	0%	0%	-28%
541330	Engineering Services	-9%	-6%	1%	-15%	4%	--	-29%
	Total	-5%	0%	-9%	3%	-17%	-90%	32%

Industry	Description	5 Parish Region	New Orleans MSA	Jefferson Parish, LA	Orleans Parish, LA	Plaquemines Parish, LA	St. Bernard Parish, LA	St. Tammany Parish, LA
541690	Other Scientific and Technical Consulting Services	-10%	-16%	6%	-2%	--	--	5%
561311	Employment Placement Agencies	-14%	-15%	-32%	-19%	0%	0%	375%
237120	Oil and Gas Pipeline and Related Structures Construction	-20%	16%	-16%	-17%	11%	-100%	21%
332996	Fabricated Pipe and Pipe Fitting Manufacturing	-21%	-18%	-62%	--	0%	--	0%
561330	Professional Employer Organizations	-22%	-21%	-49%	18%	--	0%	-7%
541214	Payroll Services	-30%	-23%	15%	-83%	--	0%	263%
327999	All Other Miscellaneous Nonmetallic Mineral Product Manufacturing	-35%	-32%	-3%	--	0%	0%	-100%
237990	Other Heavy and Civil Engineering Construction	-75%	-68%	-77%	-73%	-73%	-96%	84%
327993	Mineral Wool Manufacturing	--	--	0%	--	0%	--	0%
	Total	-5%	0%	-9%	3%	-17%	-90%	32%

Industry Breakdown - 2017 Average Earnings

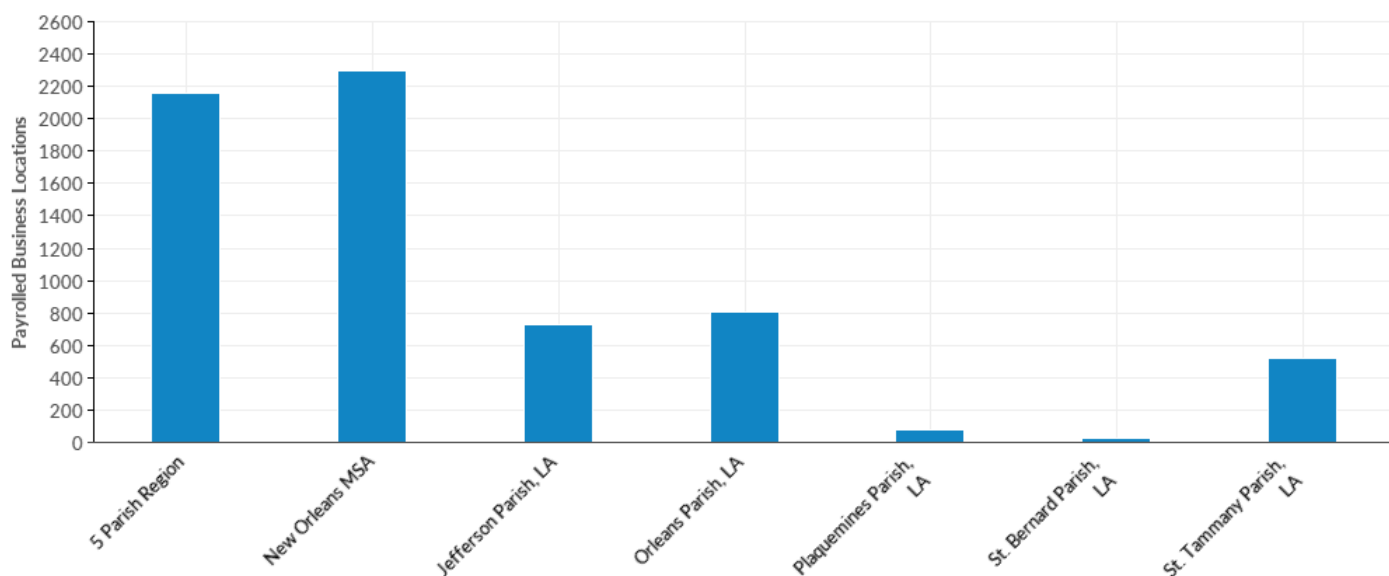


Industry	Description	5 Parish Region	New Orleans MSA	Jefferson Parish, LA	Orleans Parish, LA	Plaquemines Parish, LA	St. Bernard Parish, LA	St. Tammany Parish, LA
551112	Offices of Other Holding Companies	\$161,351	\$162,226	\$140,352	\$148,093	\$0	\$167,987	\$489,802
237120	Oil and Gas Pipeline and Related Structures Construction	\$122,428	\$94,240	\$91,015	\$108,423	\$69,220	\$0	\$189,904
541330	Engineering Services	\$112,641	\$112,433	\$108,331	\$121,997	\$105,040	--	\$103,952
324121	Asphalt Paving Mixture and Block Manufacturing	\$110,141	\$67,683	\$0	\$110,141	\$0	\$0	\$0
324122	Asphalt Shingle and Coating Materials Manufacturing	--	--	--	\$0	\$0	--	\$0
533110	Lessors of Nonfinancial Intangible Assets (except Copyrighted Works)	\$104,128	\$104,128	\$109,897	\$153,188	\$0	\$0	\$74,584
541618	Other Management Consulting Services	\$101,936	\$102,868	\$101,118	\$103,642	--	\$0	\$99,885
561330	Professional Employer Organizations	\$101,689	\$101,652	\$67,429	\$123,860	--	\$0	\$112,500
541611	Administrative Management and General Management Consulting Services	\$93,355	\$93,615	\$113,911	\$88,518	--	--	\$78,186
	Total	\$85,192	\$84,472	\$84,445	\$86,041	\$80,403	\$74,763	\$86,867

Industry	Description	5 Parish Region	New Orleans MSA	Jefferson Parish, LA	Orleans Parish, LA	Plaquemines Parish, LA	St. Bernard Parish, LA	St. Tammany Parish, LA
541690	Other Scientific and Technical Consulting Services	\$88,981	\$90,227	\$87,020	\$80,286	--	--	\$107,353
541612	Human Resources Consulting Services	\$83,367	\$92,766	\$87,126	\$81,217	\$0	\$0	--
236210	Industrial Building Construction	\$79,920	\$78,944	\$90,317	\$77,492	\$80,582	\$115,420	\$65,811
541620	Environmental Consulting Services	\$79,692	\$79,787	\$80,799	\$86,550	--	--	\$70,942
541990	All Other Professional, Scientific, and Technical Services	\$79,611	\$79,828	\$69,058	\$77,807	\$56,185	--	\$96,004
237990	Other Heavy and Civil Engineering Construction	\$78,175	\$73,842	\$78,470	\$70,406	\$79,334	\$55,989	\$83,463
237130	Power and Communication Line and Related Structures Construction	\$77,752	\$77,751	\$75,061	\$58,967	\$0	\$0	\$91,174
541310	Architectural Services	\$76,678	\$76,392	\$67,321	\$78,904	\$0	--	\$73,370
541320	Landscape Architectural Services	\$74,132	\$72,797	\$42,759	\$84,034	\$0	\$0	\$37,132
237110	Water and Sewer Line and Related Structures Construction	\$72,545	\$71,171	\$75,052	\$57,627	--	\$0	\$80,413
561499	All Other Business Support Services	\$68,935	\$68,372	\$76,328	\$60,502	--	--	--
221310	Water Supply and Irrigation Systems	\$67,768	\$67,768	\$0	\$27,257	\$73,948	\$0	\$62,777
541370	Surveying and Mapping (except Geophysical) Services	\$67,008	\$66,880	\$54,411	\$86,787	\$0	\$0	\$55,764
541214	Payroll Services	\$65,884	\$65,191	\$57,194	\$73,993	\$87,770	\$0	\$63,549
541930	Translation and Interpretation Services	\$61,862	\$61,862	\$32,147	--	\$0	\$0	--
541614	Process, Physical Distribution, and Logistics Consulting Services	\$61,392	\$69,473	\$79,924	\$50,251	--	\$0	\$56,087
	Total	\$85,192	\$84,472	\$84,445	\$86,041	\$80,403	\$74,763	\$86,867

Industry	Description	5 Parish Region	New Orleans MSA	Jefferson Parish, LA	Orleans Parish, LA	Plaquemines Parish, LA	St. Bernard Parish, LA	St. Tammany Parish, LA
327999	All Other Miscellaneous Nonmetallic Mineral Product Manufacturing	\$61,364	\$61,999	\$60,449	--	\$0	\$0	\$0
332996	Fabricated Pipe and Pipe Fitting Manufacturing	\$60,610	\$61,091	\$50,069	\$77,517	\$0	\$52,495	\$0
541199	All Other Legal Services	\$53,144	\$53,144	\$51,496	\$58,240	\$0	\$31,884	\$43,180
561920	Convention and Trade Show Organizers	\$53,007	\$53,007	\$53,631	\$51,813	\$0	--	\$61,439
327991	Cut Stone and Stone Product Manufacturing	\$51,774	\$52,369	\$46,684	\$0	--	\$0	\$56,611
561311	Employment Placement Agencies	\$45,167	\$45,706	\$45,784	\$46,790	\$0	\$0	\$41,050
561421	Telephone Answering Services	\$38,388	\$38,388	\$48,330	\$25,685	\$0	\$0	\$37,954
551111	Offices of Bank Holding Companies	\$35,086	\$35,086	--	--	\$0	\$0	\$0
561210	Facilities Support Services	\$27,870	\$29,920	\$20,265	\$28,534	--	--	\$45,508
561422	Telemarketing Bureaus and Other Contact Centers	\$22,121	\$22,121	\$28,343	\$18,979	\$0	\$0	\$27,162
332913	Plumbing Fixture Fitting and Trim Manufacturing	\$0	\$0	\$0	\$0	\$0	\$0	\$0
221330	Steam and Air-Conditioning Supply	\$0	\$0	\$0	\$0	\$0	\$0	\$0
327993	Mineral Wool Manufacturing	\$0	\$0	\$0	\$0	\$0	\$0	\$0
	Total	\$85,192	\$84,472	\$84,445	\$86,041	\$80,403	\$74,763	\$86,867

Industry Breakdown - Payrolled Business Locations

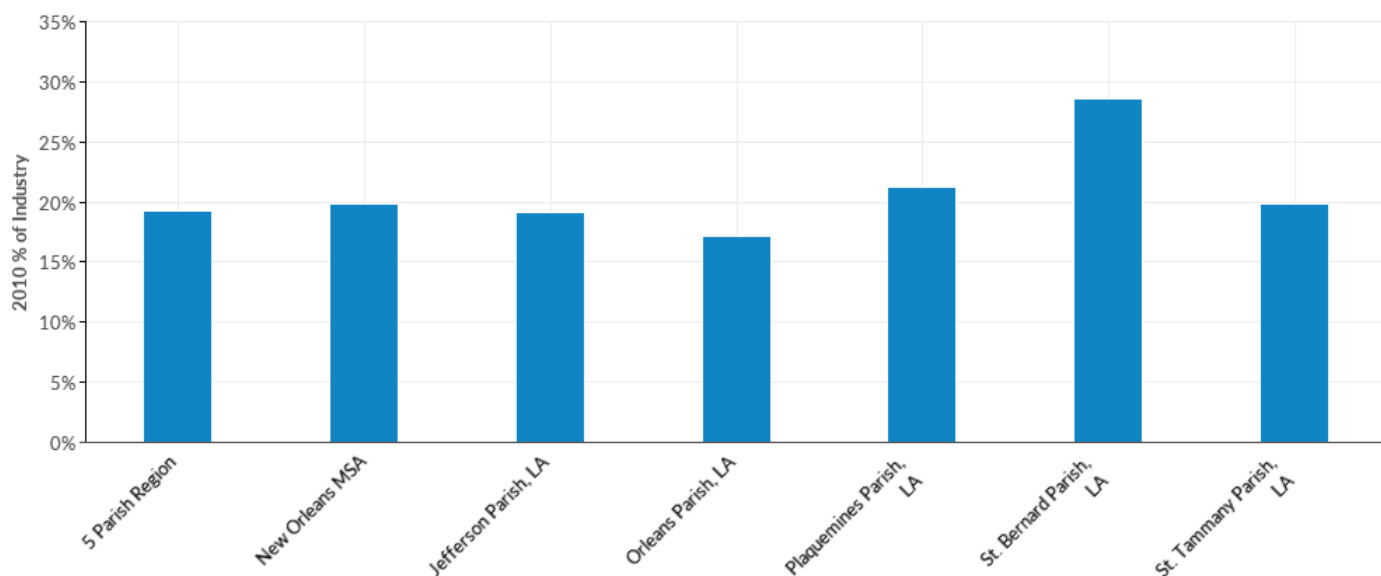


Industry	Description	5 Parish Region	New Orleans MSA	Jefferson Parish, LA	Orleans Parish, LA	Plaquemines Parish, LA	St. Bernard Parish, LA	St. Tammany Parish, LA
541330	Engineering Services	442	479	170	156	18	4	94
541611	Administrative Management and General Management Consulting Services	279	287	71	125	2	1	80
541990	All Other Professional, Scientific, and Technical Services	195	211	58	70	7	4	56
541690	Other Scientific and Technical Consulting Services	171	176	55	60	6	2	49
541310	Architectural Services	116	118	21	71	0	2	22
541618	Other Management Consulting Services	80	81	31	30	1	0	18
237990	Other Heavy and Civil Engineering Construction	65	70	20	13	14	1	17
561330	Professional Employer Organizations	63	67	25	25	2	0	11
541614	Process, Physical Distribution, and Logistics Consulting Services	58	63	16	20	3	0	18
561311	Employment Placement Agencies	55	57	23	23	0	0	10
541214	Payroll Services	51	53	19	22	2	0	10
	Total	2,156	2,295	732	803	74	25	523

Industry	Description	5 Parish Region	New Orleans MSA	Jefferson Parish, LA	Orleans Parish, LA	Plaquemines Parish, LA	St. Bernard Parish, LA	St. Tammany Parish, LA
541620	Environmental Consulting Services	50	51	22	16	2	1	9
561920	Convention and Trade Show Organizers	47	47	15	25	0	1	7
561499	All Other Business Support Services	47	48	19	19	1	0	8
236210	Industrial Building Construction	46	65	17	10	8	3	9
541199	All Other Legal Services	43	43	18	16	0	2	7
237130	Power and Communication Line and Related Structures Construction	35	37	18	3	0	0	15
541612	Human Resources Consulting Services	35	37	13	15	0	0	7
551112	Offices of Other Holding Companies	34	36	13	13	0	1	7
561210	Facilities Support Services	32	38	9	17	1	1	5
533110	Lessors of Nonfinancial Intangible Assets (except Copyrighted Works)	30	30	13	9	0	0	8
541320	Landscape Architectural Services	29	31	8	16	0	0	6
237110	Water and Sewer Line and Related Structures Construction	29	31	12	3	1	0	14
541370	Surveying and Mapping (except Geophysical) Services	27	29	13	3	0	0	11
561422	Telemarketing Bureaus and Other Contact Centers	27	27	10	9	0	0	7
237120	Oil and Gas Pipeline and Related Structures Construction	21	29	7	4	6	0	4
221310	Water Supply and Irrigation Systems	11	11	0	1	2	0	8
541930	Translation and Interpretation Services	11	11	5	4	0	0	2
327991	Cut Stone and Stone Product Manufacturing	9	10	4	0	1	0	4
	Total	2,156	2,295	732	803	74	25	523

Industry	Description	5 Parish Region	New Orleans MSA	Jefferson Parish, LA	Orleans Parish, LA	Plaquemines Parish, LA	St. Bernard Parish, LA	St. Tammany Parish, LA
561421	Telephone Answering Services	8	8	2	3	0	0	3
332996	Fabricated Pipe and Pipe Fitting Manufacturing	7	8	5	1	0	1	0
551111	Offices of Bank Holding Companies	3	3	2	1	0	0	0
327999	All Other Miscellaneous Nonmetallic Mineral Product Manufacturing	3	4	2	1	0	0	0
324122	Asphalt Shingle and Coating Materials Manufacturing	2	3	1	0	0	1	0
324121	Asphalt Paving Mixture and Block Manufacturing	1	2	0	1	0	0	0
327993	Mineral Wool Manufacturing	0	0	0	0	0	0	0
332913	Plumbing Fixture Fitting and Trim Manufacturing	0	0	0	0	0	0	0
221330	Steam and Air-Conditioning Supply	0	0	0	0	0	0	0
	Total	2,156	2,295	732	803	74	25	523

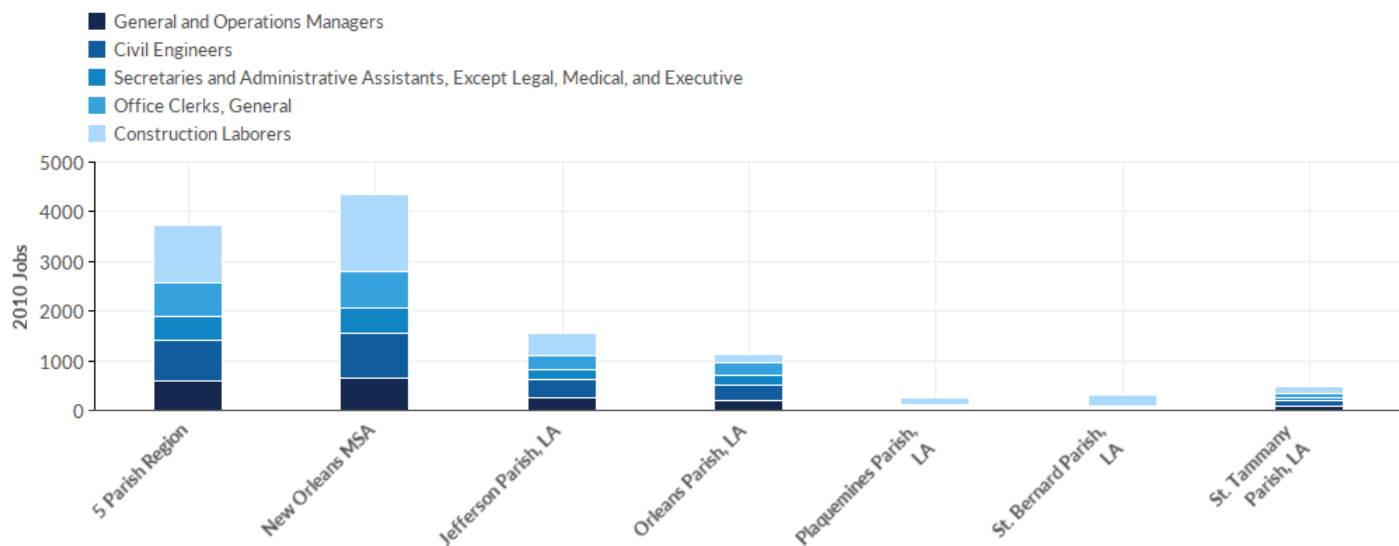
Top Occupations - 2010 % of Industry



SOC Code	Description	5 Parish Region	New Orleans MSA	Jefferson Parish, LA	Orleans Parish, LA	Plaquemines Parish, LA	St. Bernard Parish, LA	St. Tammany Parish, LA
47-2061	Construction Laborers	6%	7%	6%	3%	11%	21%	6%
17-2051	Civil Engineers	4%	4%	5%	5%	2%	2%	5%
43-9061	Office Clerks, General	3%	3%	3%	4%	3%	2%	3%
11-1021	General and Operations Managers	3%	3%	3%	3%	3%	2%	3%
43-6014	Secretaries and Administrative Assistants, Except Legal, Medical, and Executive	2%	2%	2%	3%	2%	2%	3%
	Total	19%	20%	19%	17%	21%	29%	20%

Source: QCEW Employees - Emsi 2017.4 Class of Worker

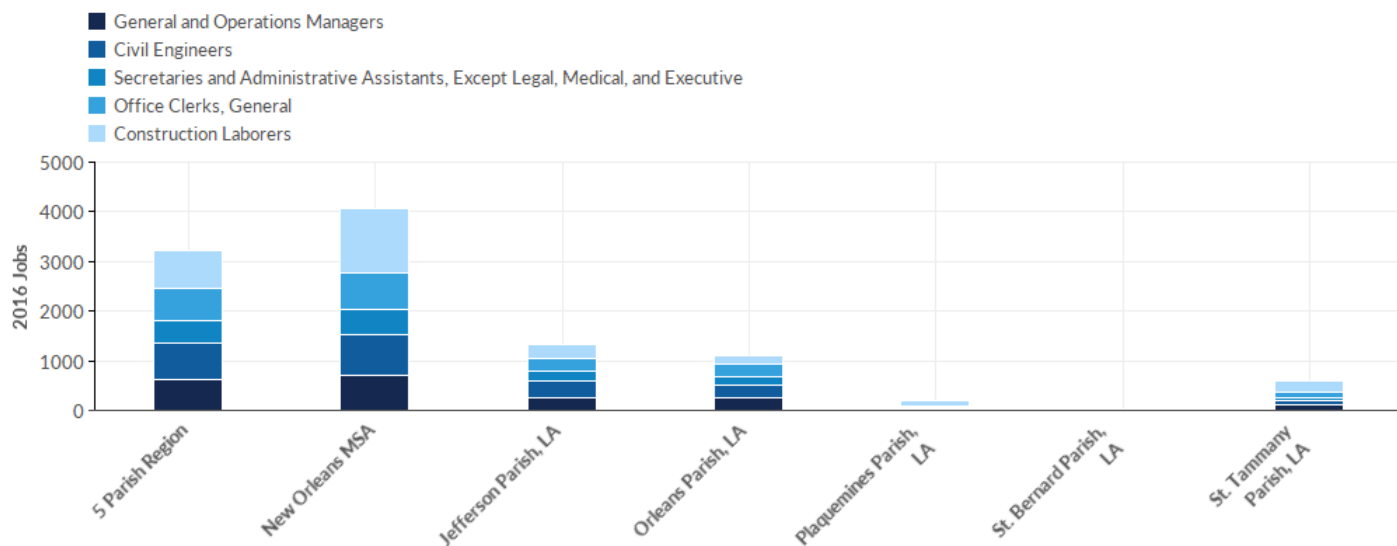
Top Occupations - 2010 Jobs



SOC Code	Description	5 Parish Region	New Orleans MSA	Jefferson Parish, LA	Orleans Parish, LA	Plaquemines Parish, LA	St. Bernard Parish, LA	St. Tammany Parish, LA
47-2061	Construction Laborers	1,152	1,545	472	185	126	231	137
17-2051	Civil Engineers	825	883	370	303	25	20	108
43-9061	Office Clerks, General	672	732	280	250	36	24	81
11-1021	General and Operations Managers	592	657	246	211	32	23	81
43-6014	Secretaries and Administrative Assistants, Except Legal, Medical, and Executive	483	527	198	185	23	17	61
	Total	3,724	4,344	1,565	1,134	241	315	468

Source: QCEW Employees - Emsi 2017.4 Class of Worker

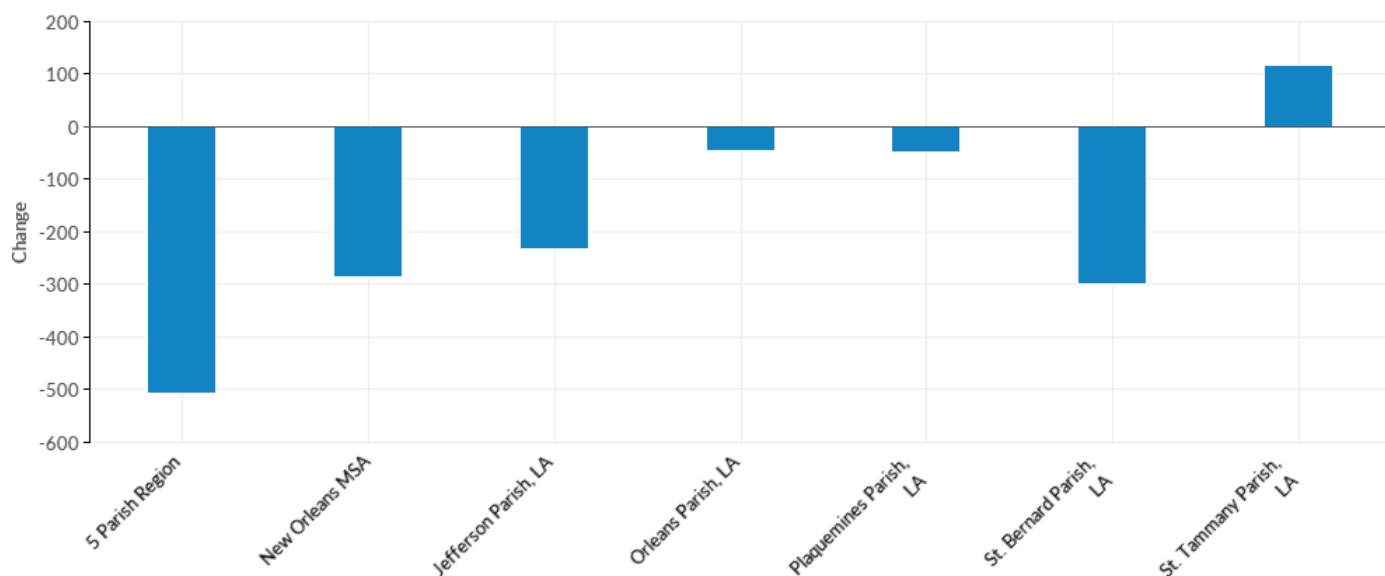
Top Occupations - 2016 Jobs



SOC Code	Description	5 Parish Region	New Orleans MSA	Jefferson Parish, LA	Orleans Parish, LA	Plaquemines Parish, LA	St. Bernard Parish, LA	St. Tammany Parish, LA
47-2061	Construction Laborers	763	1,295	290	154	96	<10	216
17-2051	Civil Engineers	720	798	353	260	22	<10	83
43-9061	Office Clerks, General	656	741	261	256	29	<10	107
11-1021	General and Operations Managers	623	714	249	241	27	<10	104
43-6014	Secretaries and Administrative Assistants, Except Legal, Medical, and Executive	454	512	180	177	19	<10	75
	Total	3,216	4,060	1,334	1,088	192	17	585

Source: QCEW Employees - Emsi 2017.4 Class of Worker

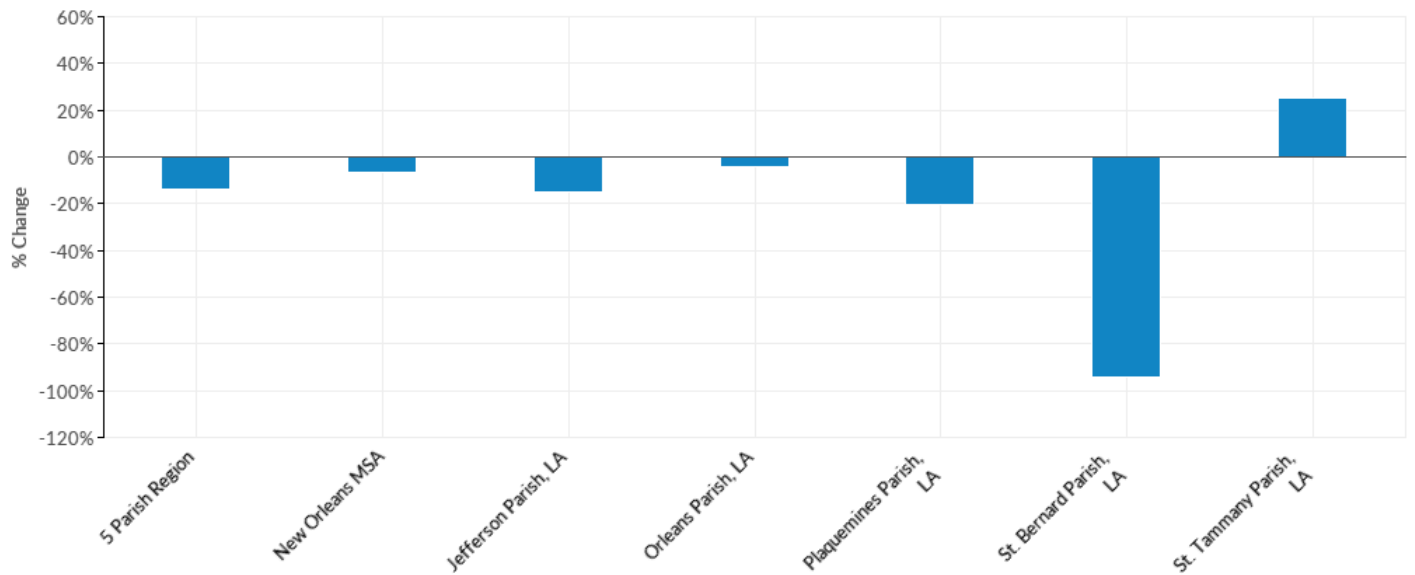
Top Occupations - Change



SOC Code	Description	5 Parish Region	New Orleans MSA	Jefferson Parish, LA	Orleans Parish, LA	Plaquemines Parish, LA	St. Bernard Parish, LA	St. Tammany Parish, LA
11-1021	General and Operations Managers	31	57	3	30	-5	--	23
43-9061	Office Clerks, General	-16	9	-19	6	-7	--	26
43-6014	Secretaries and Administrative Assistants, Except Legal, Medical, and Executive	-29	-15	-18	-8	-4	--	14
17-2051	Civil Engineers	-105	-85	-17	-43	-3	--	-25
47-2061	Construction Laborers	-389	-250	-182	-31	-30	--	79
	Total	-508	-284	-231	-46	-49	-298	117

Source: QCEW Employees - Emsi 2017.4 Class of Worker

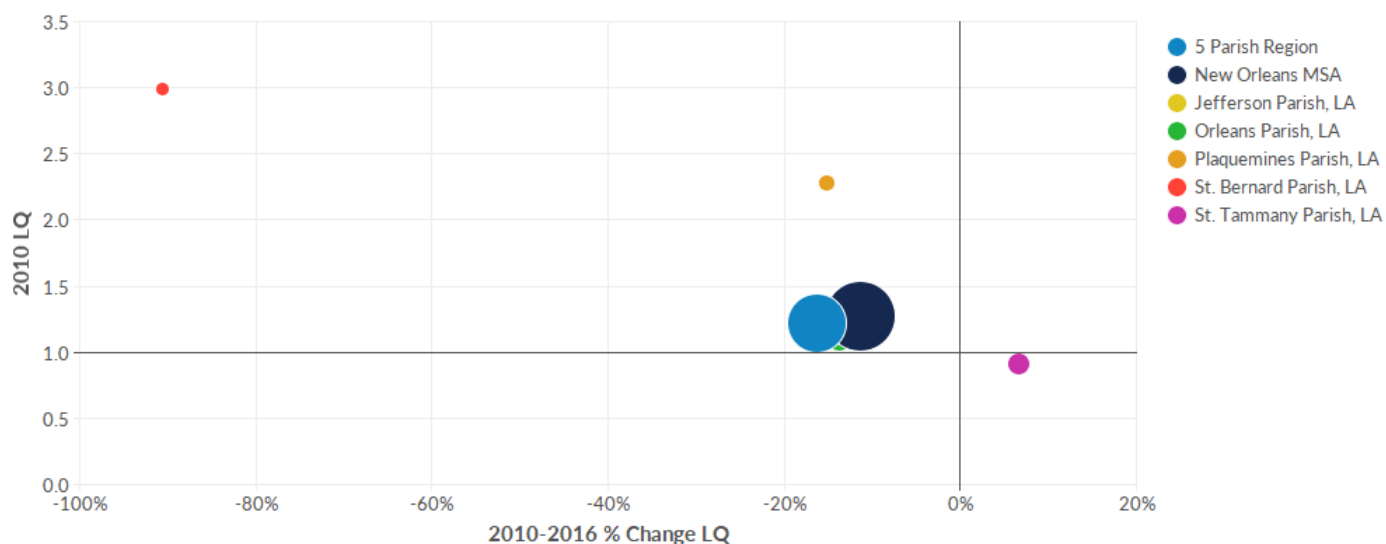
Top Occupations - % Change



SOC Code	Description	5 Parish Region	New Orleans MSA	Jefferson Parish, LA	Orleans Parish, LA	Plaquemines Parish, LA	St. Bernard Parish, LA	St. Tammany Parish, LA
11-1021	General and Operations Managers	5%	9%	1%	14%	-16%	--	28%
43-9061	Office Clerks, General	-2%	1%	-7%	2%	-19%	--	32%
43-6014	Secretaries and Administrative Assistants, Except Legal, Medical, and Executive	-6%	-3%	-9%	-4%	-17%	--	23%
17-2051	Civil Engineers	-13%	-10%	-5%	-14%	-12%	--	-23%
47-2061	Construction Laborers	-34%	-16%	-39%	-17%	-24%	--	58%
	Total	-14%	-7%	-15%	-4%	-20%	-95%	25%

Source: QCEW Employees - Emsi 2017.4 Class of Worker

Location Quotient Breakdown - 2010 National LQ



*Bubble size represents 2010 jobs in each region.

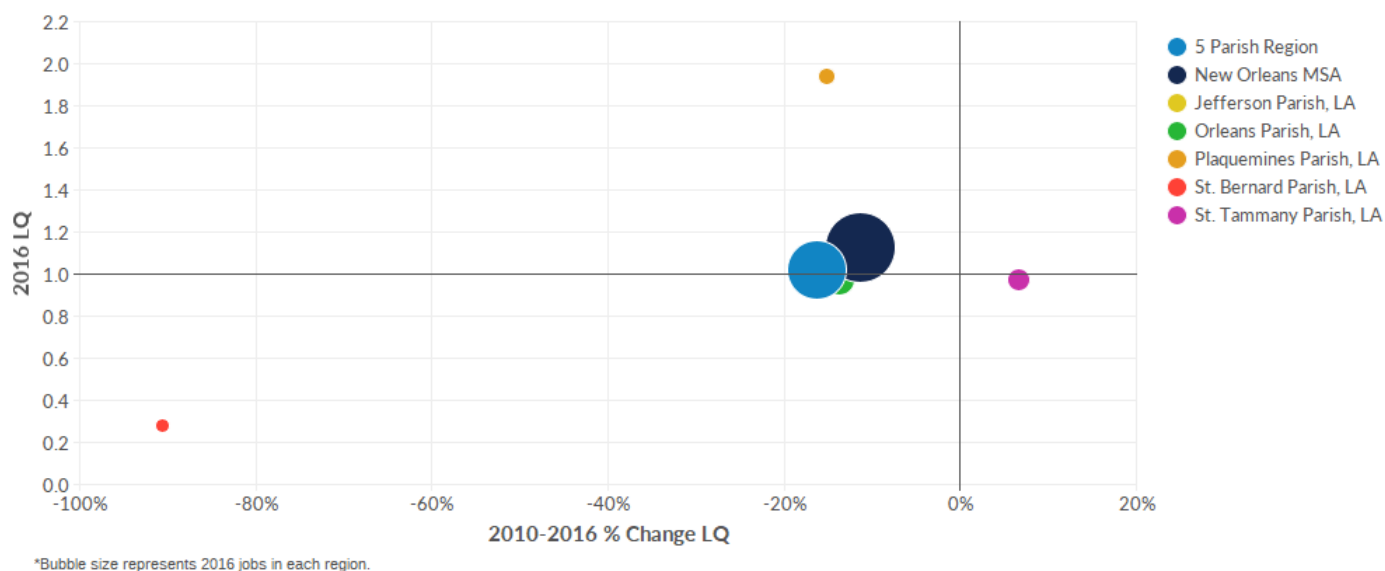
Industry	Description	5 Parish Region	New Orleans MSA	Jefferson Parish, LA	Orleans Parish, LA	Plaquemines Parish, LA	St. Bernard Parish, LA	St. Tammany Parish, LA
237990	Other Heavy and Civil Engineering Construction	8.59	8.85	8.06	2.39	42.38	116.28	2.16
561920	Convention and Trade Show Organizers	6.00	5.54	6.25	8.60	0.00	0.00	1.44
221310	Water Supply and Irrigation Systems	2.68	2.48	0.02	0.53	65.95	0.00	2.57
541199	All Other Legal Services	2.07	1.95	2.54	1.91	0.00	1.85	1.69
237120	Oil and Gas Pipeline and Related Structures Construction	1.96	4.21	1.43	1.04	7.85	14.83	2.43
332996	Fabricated Pipe and Pipe Fitting Manufacturing	1.95	1.81	4.48	0.25	0.00	0.00	0.00
541370	Surveying and Mapping (except Geophysical) Services	1.80	1.73	2.40	0.75	0.00	0.00	3.23
236210	Industrial Building Construction	1.76	2.61	1.89	2.00	0.05	1.74	1.17
327999	All Other Miscellaneous Nonmetallic Mineral Product Manufacturing	1.71	1.58	2.43	0.00	0.00	0.00	4.34
541330	Engineering Services	1.68	1.64	1.86	1.74	1.09	0.21	1.42
533110	Lessors of Nonfinancial Intangible Assets (except Copyrighted Works)	1.62	1.58	1.54	0.80	0.00	0.00	4.24
	Total	1.22	1.27	1.23	1.13	2.29	2.99	0.92

Industry	Description	5 Parish Region	New Orleans MSA	Jefferson Parish, LA	Orleans Parish, LA	Plaquemines Parish, LA	St. Bernard Parish, LA	St. Tammany Parish, LA
541990	All Other Professional, Scientific, and Technical Services	1.60	1.63	1.39	1.30	3.70	0.66	2.53
541214	Payroll Services	1.59	1.49	0.92	3.01	0.00	0.00	0.66
541320	Landscape Architectural Services	1.55	1.44	0.43	3.47	0.00	0.00	0.56
541310	Architectural Services	1.13	1.06	0.30	2.34	0.00	0.37	0.82
541620	Environmental Consulting Services	1.10	1.03	1.69	0.72	1.17	0.28	0.56
541690	Other Scientific and Technical Consulting Services	0.97	0.98	0.70	0.89	3.92	0.45	1.39
561311	Employment Placement Agencies	0.88	0.83	1.41	0.72	0.00	0.00	0.19
237110	Water and Sewer Line and Related Structures Construction	0.81	0.76	0.99	0.09	0.37	0.04	2.20
561330	Professional Employer Organizations	0.77	0.71	1.09	0.73	0.02	0.00	0.25
561499	All Other Business Support Services	0.71	0.69	0.68	1.13	0.24	0.00	0.05
541618	Other Management Consulting Services	0.65	0.61	0.68	1.00	0.05	0.00	0.01
551112	Offices of Other Holding Companies	0.57	0.59	1.13	0.23	0.00	0.08	0.06
541611	Administrative Management and General Management Consulting Services	0.48	0.45	0.40	0.60	0.18	0.01	0.52
541614	Process, Physical Distribution, and Logistics Consulting Services	0.45	0.47	0.50	0.22	0.36	0.00	0.89
561210	Facilities Support Services	0.43	0.55	0.00	0.71	4.90	0.00	0.11
237130	Power and Communication Line and Related Structures Construction	0.34	0.32	0.75	0.03	0.00	0.35	0.06
327991	Cut Stone and Stone Product Manufacturing	0.31	0.32	0.06	0.34	0.00	0.00	1.00
541612	Human Resources Consulting Services	0.25	0.27	0.10	0.44	0.00	0.00	0.26
	Total	1.22	1.27	1.23	1.13	2.29	2.99	0.92

Industry	Description	5 Parish Region	New Orleans MSA	Jefferson Parish, LA	Orleans Parish, LA	Plaquemines Parish, LA	St. Bernard Parish, LA	St. Tammany Parish, LA
561422	Telemarketing Bureaus and Other Contact Centers	0.22	0.20	0.19	0.25	0.00	0.00	0.29
561421	Telephone Answering Services	0.20	0.19	0.18	0.04	0.00	0.00	0.70
541930	Translation and Interpretation Services	0.18	0.19	0.21	0.18	0.00	0.00	0.18
327993	Mineral Wool Manufacturing	0.08	0.07	0.00	0.05	0.00	2.57	0.00
551111	Offices of Bank Holding Companies	0.02	0.02	0.00	0.00	0.00	0.00	0.14
324122	Asphalt Shingle and Coating Materials Manufacturing	0.02	0.02	0.04	0.00	0.00	0.00	0.00
332913	Plumbing Fixture Fitting and Trim Manufacturing	0.00	0.00	0.00	0.00	0.00	0.00	0.00
221330	Steam and Air-Conditioning Supply	0.00	0.00	0.00	0.00	0.00	0.00	0.00
324121	Asphalt Paving Mixture and Block Manufacturing	0.00	2.91	0.00	0.00	0.00	0.00	0.00
	Total	1.22	1.27	1.23	1.13	2.29	2.99	0.92

Source: QCEW Employees - Emsi 2017.4 Class of Worker

Location Quotient Breakdown - 2016 National LQ



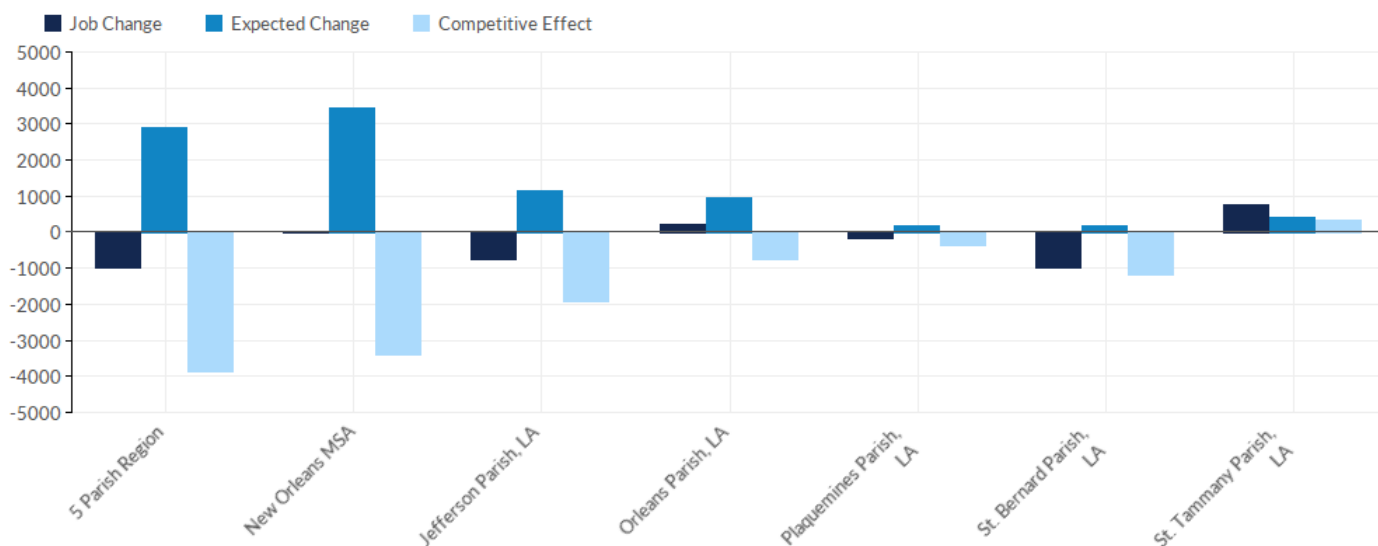
Industry	Description	5 Parish Region	New Orleans MSA	Jefferson Parish, LA	Orleans Parish, LA	Plaquemines Parish, LA	St. Bernard Parish, LA	St. Tammany Parish, LA
561920	Convention and Trade Show Organizers	5.70	5.29	5.54	8.39	0.00	0.29	1.66
541199	All Other Legal Services	3.05	2.83	2.75	4.13	0.00	5.66	1.50
221310	Water Supply and Irrigation Systems	2.60	2.41	0.00	0.47	67.17	0.00	3.47
533110	Lessors of Nonfinancial Intangible Assets (except Copyrighted Works)	2.27	2.10	3.79	0.50	0.00	0.00	3.44
541370	Surveying and Mapping (except Geophysical) Services	2.08	1.98	1.94	2.11	0.00	0.00	2.88
237990	Other Heavy and Civil Engineering Construction	1.92	2.56	1.82	0.57	11.84	4.41	3.30
236210	Industrial Building Construction	1.78	2.75	1.20	1.08	16.99	0.27	2.43
541320	Landscape Architectural Services	1.64	1.57	0.55	3.20	0.00	0.00	1.06
541330	Engineering Services	1.46	1.47	1.93	1.34	1.25	0.12	0.88
541990	All Other Professional, Scientific, and Technical Services	1.36	1.80	1.23	1.18	1.07	0.30	2.22
541614	Process, Physical Distribution, and Logistics Consulting Services	1.29	1.27	1.13	1.82	0.09	0.00	0.82
	Total	1.02	1.13	1.06	0.97	1.94	0.28	0.98

Industry	Description	5 Parish Region	New Orleans MSA	Jefferson Parish, LA	Orleans Parish, LA	Plaquemines Parish, LA	St. Bernard Parish, LA	St. Tammany Parish, LA
332996	Fabricated Pipe and Pipe Fitting Manufacturing	1.27	1.22	1.50	1.36	0.00	7.67	0.00
237130	Power and Communication Line and Related Structures Construction	1.22	1.14	2.40	0.12	0.00	0.00	1.38
237120	Oil and Gas Pipeline and Related Structures Construction	1.14	3.56	0.94	0.60	7.34	0.00	1.95
327999	All Other Miscellaneous Nonmetallic Mineral Product Manufacturing	1.04	1.00	2.38	0.31	0.00	0.00	0.00
541214	Payroll Services	1.03	1.07	1.04	0.44	3.54	0.00	2.01
541620	Environmental Consulting Services	1.02	0.95	1.41	0.59	0.24	0.20	1.31
561499	All Other Business Support Services	0.98	0.97	1.31	1.12	0.16	0.67	0.12
541310	Architectural Services	0.94	0.88	0.27	1.88	0.00	0.30	0.56
551112	Offices of Other Holding Companies	0.93	0.87	1.30	0.93	0.00	1.89	0.15
237110	Water and Sewer Line and Related Structures Construction	0.93	0.97	0.79	0.66	0.02	0.00	2.06
561210	Facilities Support Services	0.78	0.85	0.65	1.11	0.51	0.29	0.41
541618	Other Management Consulting Services	0.78	0.72	0.68	1.04	0.21	0.00	0.58
561421	Telephone Answering Services	0.74	0.68	0.47	0.45	0.00	0.00	2.15
541690	Other Scientific and Technical Consulting Services	0.73	0.69	0.66	0.69	0.29	0.08	1.13
561330	Professional Employer Organizations	0.68	0.64	0.68	0.93	0.21	0.00	0.24
561311	Employment Placement Agencies	0.66	0.61	0.89	0.48	0.00	0.00	0.72
327991	Cut Stone and Stone Product Manufacturing	0.64	0.88	0.74	0.00	0.11	0.00	1.98
541611	Administrative Management and General Management Consulting Services	0.51	0.48	0.35	0.74	0.03	0.04	0.48
	Total	1.02	1.13	1.06	0.97	1.94	0.28	0.98

Industry	Description	5 Parish Region	New Orleans MSA	Jefferson Parish, LA	Orleans Parish, LA	Plaquemines Parish, LA	St. Bernard Parish, LA	St. Tammany Parish, LA
541612	Human Resources Consulting Services	0.33	0.31	0.41	0.40	0.00	0.00	0.09
551111	Offices of Bank Holding Companies	0.32	0.29	0.35	0.47	0.00	0.00	0.00
541930	Translation and Interpretation Services	0.24	0.22	0.36	0.09	0.00	0.00	0.35
324121	Asphalt Paving Mixture and Block Manufacturing	0.21	4.87	0.00	0.54	0.00	0.00	0.00
561422	Telemarketing Bureaus and Other Contact Centers	0.16	0.15	0.06	0.29	0.00	0.00	0.15
324122	Asphalt Shingle and Coating Materials Manufacturing	0.08	0.08	0.16	0.00	0.00	0.61	0.00
332913	Plumbing Fixture Fitting and Trim Manufacturing	0.00	0.00	0.00	0.00	0.00	0.00	0.00
221330	Steam and Air-Conditioning Supply	0.00	0.00	0.00	0.00	0.00	0.00	0.00
327993	Mineral Wool Manufacturing	0.00	0.00	0.00	0.00	0.00	0.00	0.00
	Total	1.02	1.13	1.06	0.97	1.94	0.28	0.98

Source: QCEW Employees - Emsi 2017.4 Class of Worker

Shift Share Breakdown - Job Change



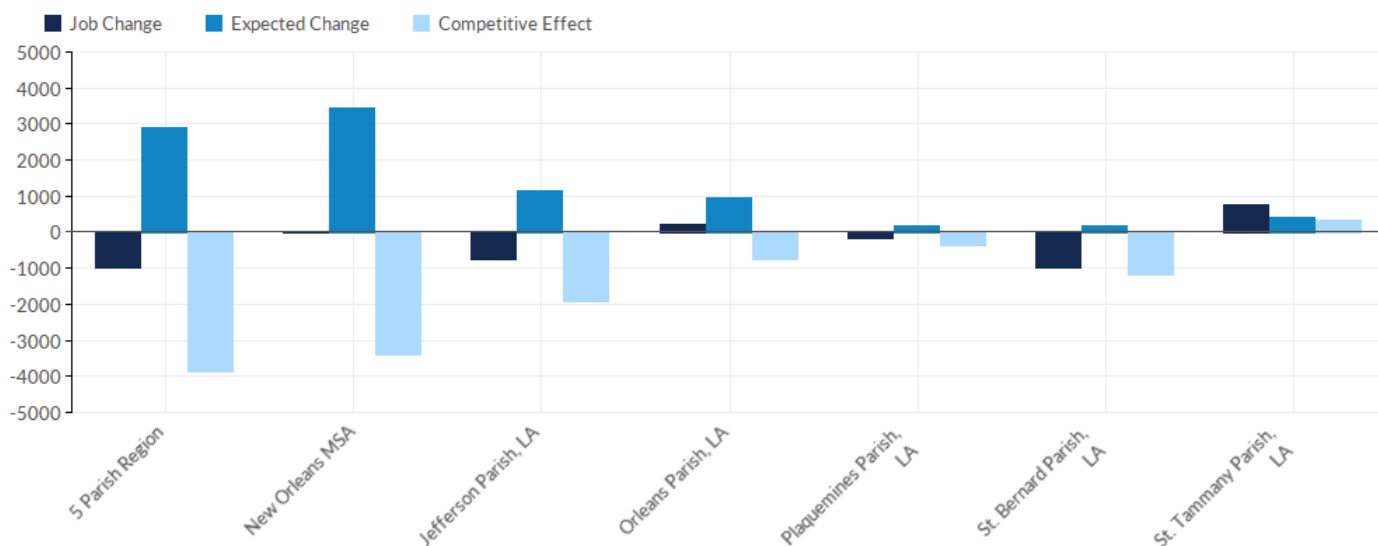
Industry	Description	5 Parish Region	New Orleans MSA	Jefferson Parish, LA	Orleans Parish, LA	Plaquemines Parish, LA	St. Bernard Parish, LA	St. Tammany Parish, LA
237130	Power and Communication Line and Related Structures Construction	582	582	419	23	0	-4	144
541614	Process, Physical Distribution, and Logistics Consulting Services	373	385	107	259	-3	0	10
541611	Administrative Management and General Management Consulting Services	356	356	41	267	-6	1	52
561210	Facilities Support Services	180	172	128	90	-68	3	28
561920	Convention and Trade Show Organizers	143	143	2	121	0	1	19
541990	All Other Professional, Scientific, and Technical Services	136	359	42	65	-24	-2	55
541199	All Other Legal Services	127	124	20	95	0	8	4
237110	Water and Sewer Line and Related Structures Construction	117	187	-42	141	-6	-1	25
551112	Offices of Other Holding Companies	104	87	17	73	0	10	4
561499	All Other Business Support Services	95	107	72	16	-1	4	4
	Total	-994	33	-767	211	-192	-999	753

Industry	Description	5 Parish Region	New Orleans MSA	Jefferson Parish, LA	Orleans Parish, LA	Plaquemines Parish, LA	St. Bernard Parish, LA	St. Tammany Parish, LA
541370	Surveying and Mapping (except Geophysical) Services	67	65	-28	91	0	0	4
561421	Telephone Answering Services	65	65	13	20	0	0	32
236210	Industrial Building Construction	57	150	-165	-163	262	-19	142
541618	Other Management Consulting Services	52	50	-2	19	1	0	33
327991	Cut Stone and Stone Product Manufacturing	44	75	29	-10	0	0	25
533110	Lessors of Nonfinancial Intangible Assets (except Copyrighted Works)	38	30	62	-11	0	0	-13
541612	Human Resources Consulting Services	28	19	33	1	0	0	-7
541320	Landscape Architectural Services	21	26	5	4	0	0	12
541930	Translation and Interpretation Services	14	13	10	-1	0	0	5
221310	Water Supply and Irrigation Systems	13	12	-1	0	-17	0	32
551111	Offices of Bank Holding Companies	13	13	6	8	0	0	-1
324121	Asphalt Paving Mixture and Block Manufacturing	11	124	0	11	0	0	0
324122	Asphalt Shingle and Coating Materials Manufacturing	2	2	2	0	0	0	0
221330	Steam and Air-Conditioning Supply	0	0	0	0	0	0	0
332913	Plumbing Fixture Fitting and Trim Manufacturing	0	0	0	0	0	0	0
327993	Mineral Wool Manufacturing	-5	-5	0	-1	0	-3	0
541620	Environmental Consulting Services	-5	-10	-34	-6	-8	-1	43
561422	Telemarketing Bureaus and Other Contact Centers	-21	-21	-68	65	0	0	-19
327999	All Other Miscellaneous Nonmetallic Mineral Product Manufacturing	-23	-22	-1	5	0	0	-28
	Total	-994	33	-767	211	-192	-999	753

Industry	Description	5 Parish Region	New Orleans MSA	Jefferson Parish, LA	Orleans Parish, LA	Plaquemines Parish, LA	St. Bernard Parish, LA	St. Tammany Parish, LA
541310	Architectural Services	-35	-38	-4	-19	0	-1	-11
332996	Fabricated Pipe and Pipe Fitting Manufacturing	-40	-35	-114	55	0	19	0
541690	Other Scientific and Technical Consulting Services	-56	-96	10	-4	-65	-5	7
561311	Employment Placement Agencies	-93	-101	-145	-38	0	0	90
237120	Oil and Gas Pipeline and Related Structures Construction	-130	240	-31	-21	9	-114	27
561330	Professional Employer Organizations	-244	-230	-317	71	6	0	-4
541214	Payroll Services	-261	-198	30	-496	56	0	150
541330	Engineering Services	-497	-358	19	-300	4	-7	-213
237990	Other Heavy and Civil Engineering Construction	-2,221	-2,242	-883	-219	-332	-888	101
	Total	-994	33	-767	211	-192	-999	753

Source: QCEW Employees - Emsi 2017.4 Class of Worker

Shift Share Breakdown - Expected Change



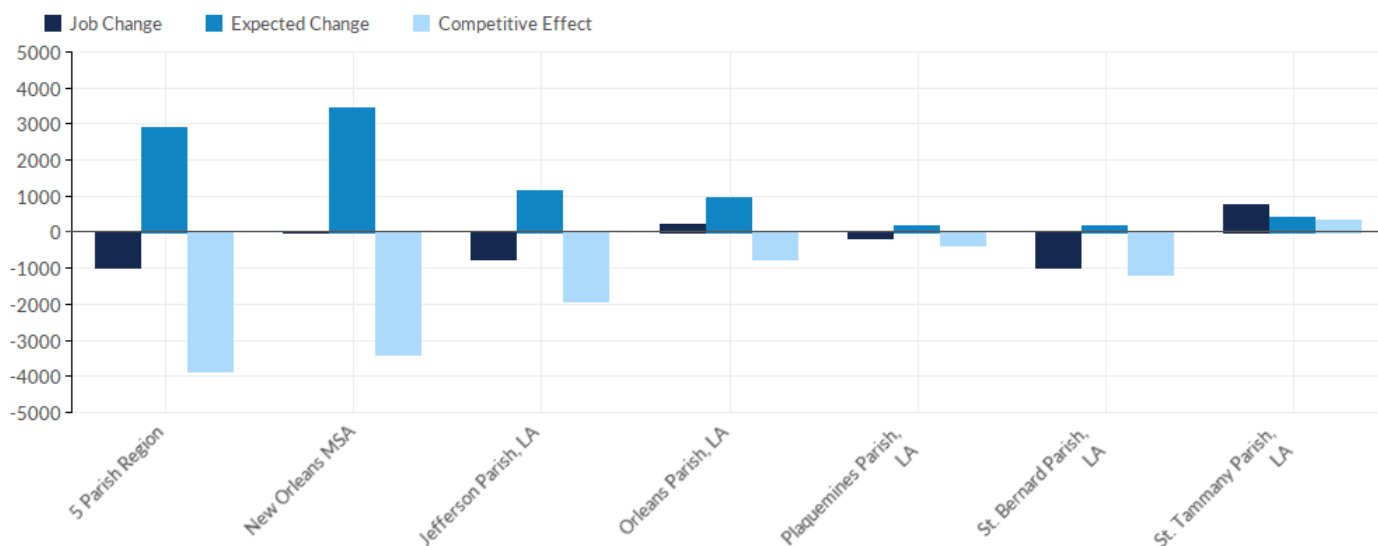
Industry	Description	5 Parish Region	New Orleans MSA	Jefferson Parish, LA	Orleans Parish, LA	Plaquemines Parish, LA	St. Bernard Parish, LA	St. Tammany Parish, LA
541330	Engineering Services	412	434	189	156	8	1	56
237990	Other Heavy and Civil Engineering Construction	411	458	160	42	63	129	17
541611	Administrative Management and General Management Consulting Services	321	327	111	149	4	0	57
237120	Oil and Gas Pipeline and Related Structures Construction	273	636	83	53	34	48	55
541990	All Other Professional, Scientific, and Technical Services	273	302	99	82	20	3	70
561920	Convention and Trade Show Organizers	231	231	100	122	0	0	9
561311	Employment Placement Agencies	132	133	88	39	0	0	5
541690	Other Scientific and Technical Consulting Services	127	138	38	43	16	1	29
541310	Architectural Services	107	109	12	82	0	1	13
541214	Payroll Services	99	100	24	68	0	0	7
561422	Telemarketing Bureaus and Other Contact Centers	87	87	31	37	0	0	19
	Total	2,888	3,457	1,146	968	180	188	406

Industry	Description	5 Parish Region	New Orleans MSA	Jefferson Parish, LA	Orleans Parish, LA	Plaquemines Parish, LA	St. Bernard Parish, LA	St. Tammany Parish, LA
236210	Industrial Building Construction	77	123	34	32	0	2	8
237110	Water and Sewer Line and Related Structures Construction	61	61	31	2	1	0	27
237130	Power and Communication Line and Related Structures Construction	52	53	48	2	0	1	2
332996	Fabricated Pipe and Pipe Fitting Manufacturing	51	51	49	2	0	0	0
541199	All Other Legal Services	43	44	22	15	0	1	6
541614	Process, Physical Distribution, and Logistics Consulting Services	36	41	17	7	1	0	12
221310	Water Supply and Irrigation Systems	36	36	0	3	27	0	6
541370	Surveying and Mapping (except Geophysical) Services	30	32	17	5	0	0	9
541620	Environmental Consulting Services	28	29	18	7	1	0	2
561499	All Other Business Support Services	25	26	10	15	0	0	0
541618	Other Management Consulting Services	18	18	8	10	0	0	0
541320	Landscape Architectural Services	15	15	2	13	0	0	1
551112	Offices of Other Holding Companies	14	16	11	2	0	0	0
561210	Facilities Support Services	12	17	0	8	4	0	1
327991	Cut Stone and Stone Product Manufacturing	10	11	1	4	0	0	5
541930	Translation and Interpretation Services	8	9	4	3	0	0	1
327999	All Other Miscellaneous Nonmetallic Mineral Product Manufacturing	7	7	4	0	0	0	3
541612	Human Resources Consulting Services	7	8	1	5	0	0	1
	Total	2,888	3,457	1,146	968	180	188	406

Industry	Description	5 Parish Region	New Orleans MSA	Jefferson Parish, LA	Orleans Parish, LA	Plaquemines Parish, LA	St. Bernard Parish, LA	St. Tammany Parish, LA
327993	Mineral Wool Manufacturing	0	0	0	0	0	0	0
324121	Asphalt Paving Mixture and Block Manufacturing	0	20	0	0	0	0	0
324122	Asphalt Shingle and Coating Materials Manufacturing	0	0	0	0	0	0	0
332913	Plumbing Fixture Fitting and Trim Manufacturing	0	0	0	0	0	0	0
221330	Steam and Air-Conditioning Supply	0	0	0	0	0	0	0
551111	Offices of Bank Holding Companies	0	0	0	0	0	0	0
561421	Telephone Answering Services	-2	-2	-1	0	0	0	-1
533110	Lessors of Nonfinancial Intangible Assets (except Copyrighted Works)	-11	-12	-4	-2	0	0	-5
561330	Professional Employer Organizations	-101	-101	-60	-35	0	0	-5
	Total	2,888	3,457	1,146	968	180	188	406

Source: QCEW Employees - Emsi 2017.4 Class of Worker

Shift Share Breakdown - Competitive Effect



Industry	Description	5 Parish Region	New Orleans MSA	Jefferson Parish, LA	Orleans Parish, LA	Plaquemines Parish, LA	St. Bernard Parish, LA	St. Tammany Parish, LA
237130	Power and Communication Line and Related Structures Construction	530	529	372	21	0	-5	143
541614	Process, Physical Distribution, and Logistics Consulting Services	338	344	90	252	-4	0	-2
561210	Facilities Support Services	168	155	128	82	-73	3	27
551112	Offices of Other Holding Companies	90	71	5	71	0	10	4
541199	All Other Legal Services	83	80	-2	80	0	7	-2
561499	All Other Business Support Services	71	81	62	2	-1	4	4
561421	Telephone Answering Services	67	67	13	20	0	0	33
237110	Water and Sewer Line and Related Structures Construction	56	126	-73	138	-7	-1	-2
533110	Lessors of Nonfinancial Intangible Assets (except Copyrighted Works)	49	42	66	-9	0	0	-8
541370	Surveying and Mapping (except Geophysical) Services	37	34	-45	86	0	0	-5
541611	Administrative Management and General Management Consulting Services	35	29	-70	118	-10	1	-4
	Total	-3,881	-3,424	-1,913	-758	-372	-1,186	347

Industry	Description	5 Parish Region	New Orleans MSA	Jefferson Parish, LA	Orleans Parish, LA	Plaquemines Parish, LA	St. Bernard Parish, LA	St. Tammany Parish, LA
327991	Cut Stone and Stone Product Manufacturing	35	65	28	-14	0	0	20
541618	Other Management Consulting Services	34	31	-10	9	1	0	33
541612	Human Resources Consulting Services	21	11	32	-3	0	0	-8
551111	Offices of Bank Holding Companies	13	13	6	8	0	0	-1
324121	Asphalt Paving Mixture and Block Manufacturing	11	104	0	11	0	0	0
541930	Translation and Interpretation Services	6	3	6	-4	0	0	4
541320	Landscape Architectural Services	6	11	3	-9	0	0	11
324122	Asphalt Shingle and Coating Materials Manufacturing	2	2	2	0	0	0	0
221330	Steam and Air-Conditioning Supply	0	0	0	0	0	0	0
332913	Plumbing Fixture Fitting and Trim Manufacturing	0	0	0	0	0	0	0
327993	Mineral Wool Manufacturing	-5	-5	0	-1	0	-4	0
236210	Industrial Building Construction	-20	27	-199	-195	261	-21	133
221310	Water Supply and Irrigation Systems	-22	-23	-1	-3	-45	0	27
327999	All Other Miscellaneous Nonmetallic Mineral Product Manufacturing	-31	-29	-5	5	0	0	-31
541620	Environmental Consulting Services	-33	-39	-52	-13	-9	-1	41
561920	Convention and Trade Show Organizers	-87	-87	-98	-1	0	1	10
332996	Fabricated Pipe and Pipe Fitting Manufacturing	-91	-86	-163	53	0	19	0
561422	Telemarketing Bureaus and Other Contact Centers	-108	-108	-99	28	0	0	-37
	Total	-3,881	-3,424	-1,913	-758	-372	-1,186	347

Industry	Description	5 Parish Region	New Orleans MSA	Jefferson Parish, LA	Orleans Parish, LA	Plaquemines Parish, LA	St. Bernard Parish, LA	St. Tammany Parish, LA
541990	All Other Professional, Scientific, and Technical Services	-137	57	-57	-17	-44	-5	-14
541310	Architectural Services	-142	-147	-16	-101	0	-2	-24
561330	Professional Employer Organizations	-143	-129	-257	106	6	0	1
541690	Other Scientific and Technical Consulting Services	-183	-234	-28	-46	-81	-6	-22
561311	Employment Placement Agencies	-225	-234	-232	-78	0	0	85
541214	Payroll Services	-360	-298	6	-565	56	0	143
237120	Oil and Gas Pipeline and Related Structures Construction	-403	-396	-114	-74	-25	-162	-28
541330	Engineering Services	-909	-792	-170	-456	-4	-8	-269
237990	Other Heavy and Civil Engineering Construction	-2,632	-2,700	-1,043	-261	-395	-1,017	84
	Total	-3,881	-3,424	-1,913	-758	-372	-1,186	347

Source: QCEW Employees - Emsi 2017.4 Class of Worker

Appendix A - Industries

Code	Description
221310	Water Supply and Irrigation Systems
221330	Steam and Air-Conditioning Supply
236210	Industrial Building Construction
237110	Water and Sewer Line and Related Structures Construction
237120	Oil and Gas Pipeline and Related Structures Construction
237130	Power and Communication Line and Related Structures Construction
237990	Other Heavy and Civil Engineering Construction
324121	Asphalt Paving Mixture and Block Manufacturing
324122	Asphalt Shingle and Coating Materials Manufacturing
327991	Cut Stone and Stone Product Manufacturing
327993	Mineral Wool Manufacturing
327999	All Other Miscellaneous Nonmetallic Mineral Product Manufacturing
332913	Plumbing Fixture Fitting and Trim Manufacturing
332996	Fabricated Pipe and Pipe Fitting Manufacturing
533110	Lessors of Nonfinancial Intangible Assets (except Copyrighted Works)
541199	All Other Legal Services
541214	Payroll Services
541310	Architectural Services
541320	Landscape Architectural Services
541330	Engineering Services
541370	Surveying and Mapping (except Geophysical) Services
541611	Administrative Management and General Management Consulting Services
541612	Human Resources Consulting Services
541614	Process, Physical Distribution, and Logistics Consulting Services
541618	Other Management Consulting Services
541620	Environmental Consulting Services
541690	Other Scientific and Technical Consulting Services
541930	Translation and Interpretation Services
541990	All Other Professional, Scientific, and Technical Services

Code	Description
551111	Offices of Bank Holding Companies
551112	Offices of Other Holding Companies
561210	Facilities Support Services
561311	Employment Placement Agencies
561330	Professional Employer Organizations
561421	Telephone Answering Services
561422	Telemarketing Bureaus and Other Contact Centers
561499	All Other Business Support Services
561920	Convention and Trade Show Organizers

Appendix B - Data Sources and Calculations

Industry Data

Emsi industry data have various sources depending on the class of worker. (1) For QCEW Employees, Emsi primarily uses the QCEW (Quarterly Census of Employment and Wages), with supplemental estimates from County Business Patterns. (2) Non-QCEW employees data are based on a number of sources including QCEW, Current Employment Statistics, County Business Patterns, BEA State and Local Personal Income reports, the National Industry-Occupation Employment Matrix (NIOEM), the American Community Survey, and Railroad Retirement Board statistics. (3) Self-Employed and Extended Proprietor classes of worker data are primarily based on the American Community Survey, Nonemployer Statistics, and BEA State and Local Personal Income Reports. Projections for QCEW and Non-QCEW Employees are informed by NIOEM and long-term industry projections published by individual states.

Staffing Patterns Data

The staffing pattern data in this report are compiled from several sources using a specialized process. For QCEW and Non-QCEW Employees classes of worker, sources include Occupational Employment Statistics, the National Industry-Occupation Employment Matrix, and the American Community Survey. For the Self-Employed and Extended Proprietors classes of worker, the primary source is the American Community Survey, with a small amount of information from Occupational Employment Statistics.

State Data Sources

This report uses state data from the following agencies: Louisiana Department of Labor