

Regional Comparison by Industry

Comparing Health Sciences across 7 Regions

Emsi Q4 2017 Data Set

December 2017

Regional Planning Commission



10 Veterans Blvd.
New Orleans, Louisiana 70124

Parameters

Industries

37 items selected. See Appendix A for details.

Region

Code	Description	Level
Group	5 Parish Region	FIPS
Group	New Orleans MSA	FIPS
22051	Jefferson Parish, LA	FIPS
22071	Orleans Parish, LA	FIPS
22075	Plaquemines Parish, LA	FIPS
22087	St. Bernard Parish, LA	FIPS
22103	St. Tammany Parish, LA	FIPS

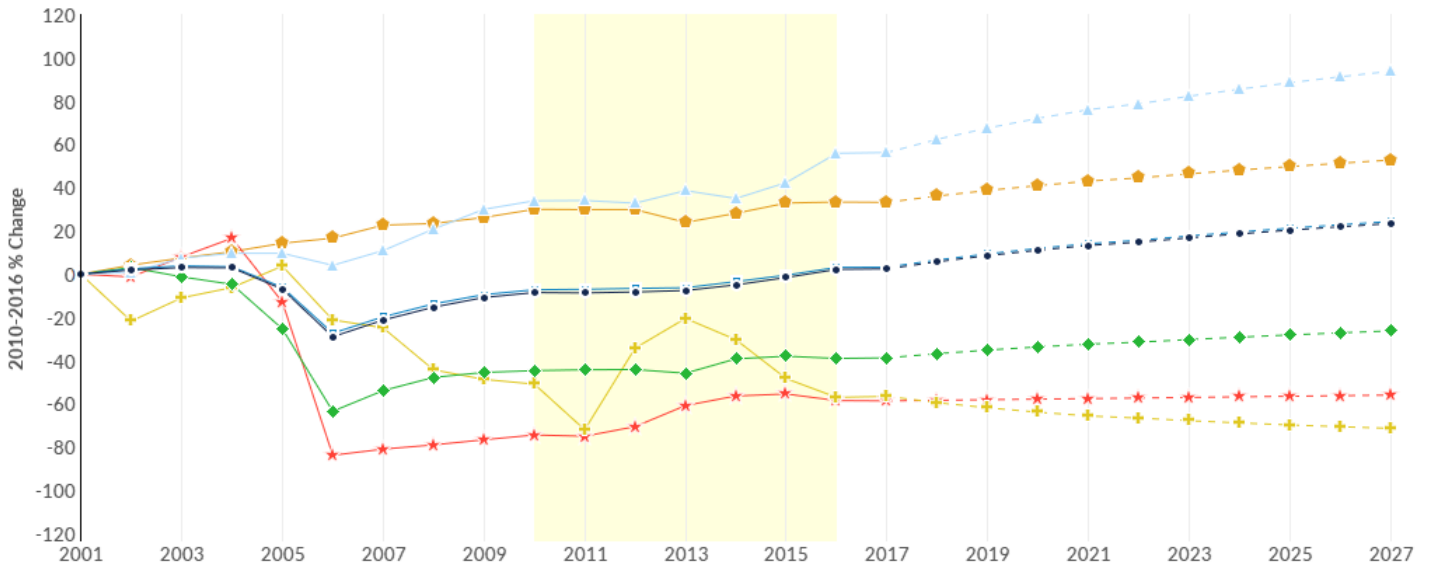
Timeframe

2010 - 2016

Datarun

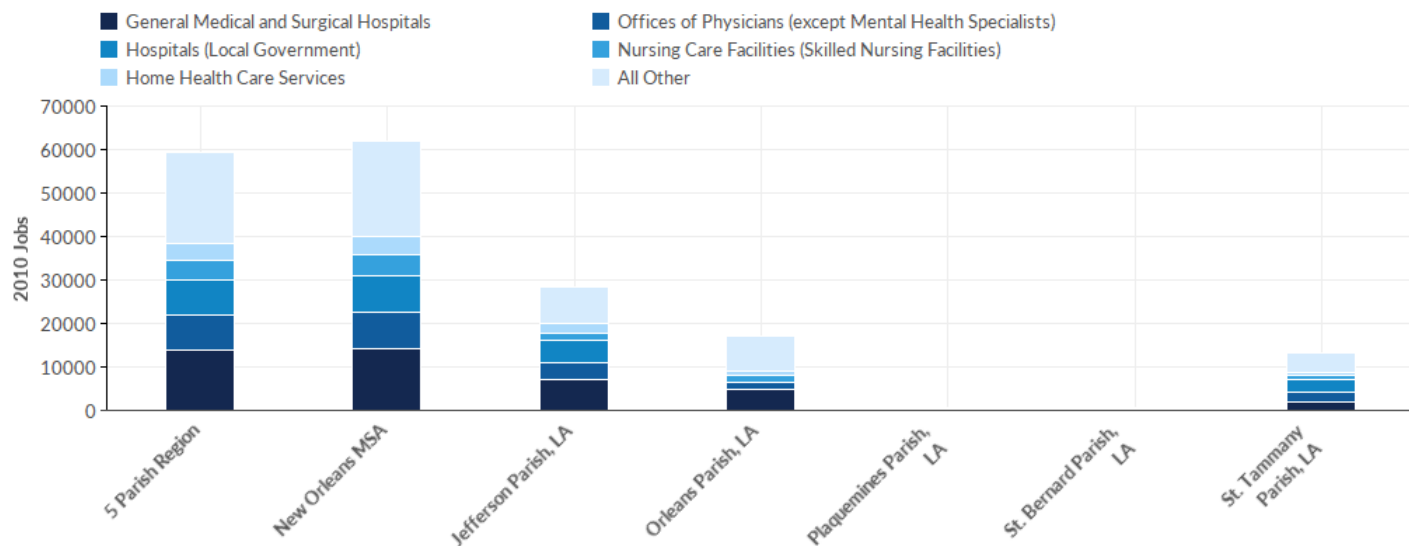
2017.4 - QCEW Employees

Industry Change Summary



Region	2010 Jobs	2016 Jobs	Change	% Change	2017 Average Earnings	2017 Payrolled Business Locations
● 5 Parish Region	59,476	66,443	6,967	12%	\$64,570	3,151
■ New Orleans MSA	61,911	68,804	6,893	11%	\$64,222	3,305
▲ Jefferson Parish, LA	28,295	32,941	4,646	16%	\$67,726	1,391
◆ Orleans Parish, LA	17,005	18,738	1,733	10%	\$61,023	859
+ Plaquemines Parish, LA	536	469	-67	-13%	\$63,358	19
★ St. Bernard Parish, LA	507	822	315	62%	\$48,024	64
⬠ St. Tammany Parish, LA	13,132	13,473	341	3%	\$62,838	819

Industry Breakdown - 2010 Jobs

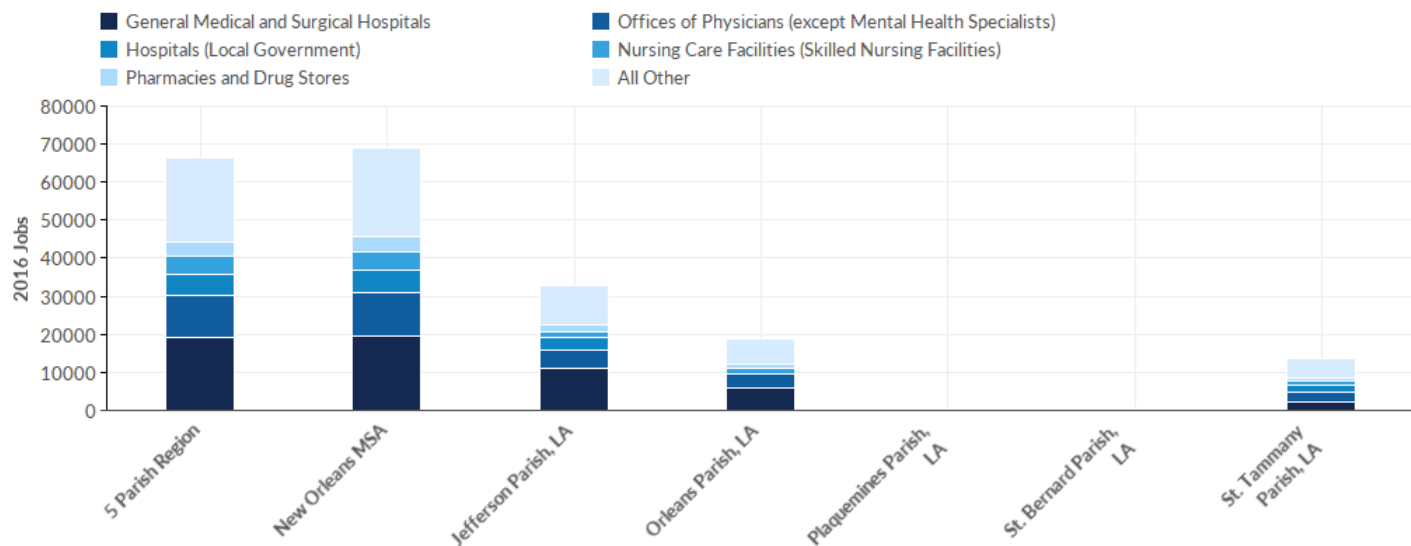


Industry	Description	5 Parish Region	New Orleans MSA	Jefferson Parish, LA	Orleans Parish, LA	Plaquemines Parish, LA	St. Bernard Parish, LA	St. Tammany Parish, LA
622110	General Medical and Surgical Hospitals	13,726	14,044	6,950	4,944	0	<10	1,828
621111	Offices of Physicians (except Mental Health Specialists)	8,139	8,460	4,117	1,541	11	134	2,336
903622	Hospitals (Local Government)	8,086	8,510	4,973	0	223	0	2,890
623110	Nursing Care Facilities (Skilled Nursing Facilities)	4,421	4,758	1,828	1,456	154	14	969
621610	Home Health Care Services	3,974	4,337	2,079	963	61	106	766
446110	Pharmacies and Drug Stores	3,425	3,631	1,638	988	18	101	680
902622	Hospitals (State Government)	3,006	3,026	0	2,733	0	11	262
622310	Specialty (except Psychiatric and Substance Abuse) Hospitals	2,907	2,917	874	1,577	0	0	456
621210	Offices of Dentists	2,664	2,783	1,313	445	27	47	832
623210	Residential Intellectual and Developmental Disability Facilities	997	1,058	725	157	28	24	62
622210	Psychiatric and Substance Abuse Hospitals	827	827	143	450	0	0	234
621492	Kidney Dialysis Centers	670	744	412	137	0	<10	116
623311	Continuing Care Retirement Communities	649	649	0	368	0	0	281
	Total	59,476	61,911	28,295	17,005	536	507	13,132

Industry	Description	5 Parish Region	New Orleans MSA	Jefferson Parish, LA	Orleans Parish, LA	Plaquemines Parish, LA	St. Bernard Parish, LA	St. Tammany Parish, LA
621340	Offices of Physical, Occupational and Speech Therapists, and Audiologists	642	691	257	86	0	<10	290
621511	Medical Laboratories	514	517	415	42	0	<10	56
621910	Ambulance Services	461	474	373	<10	0	19	62
623312	Assisted Living Facilities for the Elderly	423	423	221	168	0	0	35
621112	Offices of Physicians, Mental Health Specialists	415	428	188	189	0	0	38
621493	Freestanding Ambulatory Surgical and Emergency Centers	412	412	271	35	0	0	106
623220	Residential Mental Health and Substance Abuse Facilities	407	409	152	229	<10	0	25
621320	Offices of Optometrists	362	378	236	75	<10	<10	44
621420	Outpatient Mental Health and Substance Abuse Centers	338	378	73	164	0	0	101
621310	Offices of Chiropractors	303	324	149	50	0	<10	97
621498	All Other Outpatient Care Centers	262	262	107	31	0	18	107
446130	Optical Goods Stores	195	205	140	13	0	0	42
621991	Blood and Organ Banks	168	169	135	<10	0	0	32
621512	Diagnostic Imaging Centers	167	167	94	19	0	<10	53
339116	Dental Laboratories	157	157	63	<10	<10	<10	87
621330	Offices of Mental Health Practitioners (except Physicians)	143	146	84	41	0	0	18
621999	All Other Miscellaneous Ambulatory Health Care Services	138	138	43	<10	<10	0	84
532283	Home Health Equipment Rental	130	130	89	<10	0	0	35
621399	Offices of All Other Miscellaneous Health Practitioners	106	106	60	<10	0	0	36
621391	Offices of Podiatrists	86	94	32	22	0	0	32
	Total	59,476	61,911	28,295	17,005	536	507	13,132

Industry	Description	5 Parish Region	New Orleans MSA	Jefferson Parish, LA	Orleans Parish, LA	Plaquemines Parish, LA	St. Bernard Parish, LA	St. Tammany Parish, LA
541714	Research and Development in Biotechnology (except Nanobiotechnology)	67	67	<10	20	<10	0	34
621410	Family Planning Centers	50	50	35	14	0	0	0
541713	Research and Development in Nanotechnology	35	37	19	11	<10	0	<10
621491	HMO Medical Centers	<10	<10	0	<10	0	0	<10
	Total	59,476	61,911	28,295	17,005	536	507	13,132

Industry Breakdown - 2016 Jobs

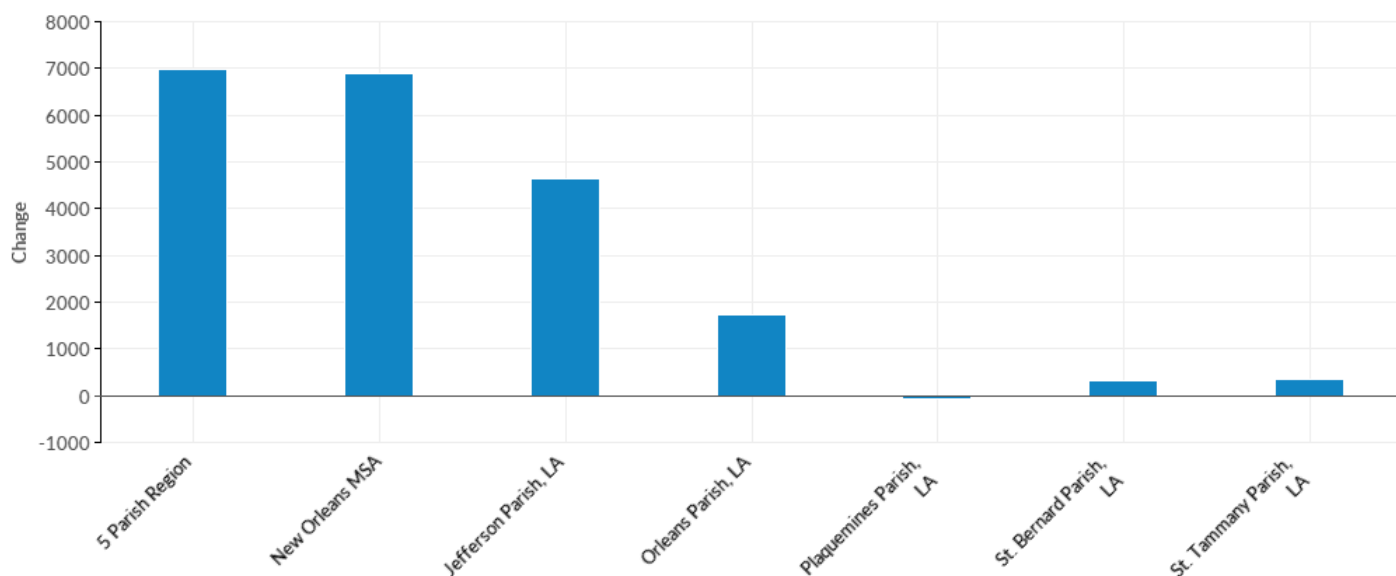


Industry	Description	5 Parish Region	New Orleans MSA	Jefferson Parish, LA	Orleans Parish, LA	Plaquemines Parish, LA	St. Bernard Parish, LA	St. Tammany Parish, LA
622110	General Medical and Surgical Hospitals	19,321	19,476	10,902	5,904	0	171	2,344
621111	Offices of Physicians (except Mental Health Specialists)	10,871	11,561	4,767	3,530	26	68	2,480
903622	Hospitals (Local Government)	5,742	5,893	3,575	0	206	0	1,961
623110	Nursing Care Facilities (Skilled Nursing Facilities)	4,461	4,758	1,574	1,698	102	65	1,023
446110	Pharmacies and Drug Stores	3,924	4,141	1,736	1,216	24	125	824
621610	Home Health Care Services	3,190	3,536	2,014	470	0	89	617
621210	Offices of Dentists	3,081	3,251	1,497	529	29	70	956
622310	Specialty (except Psychiatric and Substance Abuse) Hospitals	2,728	2,728	581	1,850	0	0	298
621340	Offices of Physical, Occupational and Speech Therapists, and Audiologists	1,250	1,308	708	178	<10	34	329
622210	Psychiatric and Substance Abuse Hospitals	1,211	1,211	308	501	0	0	402
623210	Residential Intellectual and Developmental Disability Facilities	1,029	1,070	615	54	37	113	210
623311	Continuing Care Retirement Communities	927	927	0	655	0	0	272
	Total	66,443	68,804	32,941	18,738	469	822	13,473

Industry	Description	5 Parish Region	New Orleans MSA	Jefferson Parish, LA	Orleans Parish, LA	Plaquemines Parish, LA	St. Bernard Parish, LA	St. Tammany Parish, LA
621511	Medical Laboratories	905	908	687	104	<10	<10	106
621492	Kidney Dialysis Centers	893	904	502	230	0	<10	159
623312	Assisted Living Facilities for the Elderly	892	912	493	144	0	0	255
623220	Residential Mental Health and Substance Abuse Facilities	631	634	260	367	0	0	<10
621493	Freestanding Ambulatory Surgical and Emergency Centers	575	597	386	83	0	<10	105
621420	Outpatient Mental Health and Substance Abuse Centers	572	601	143	387	0	<10	41
621910	Ambulance Services	468	489	320	20	0	31	97
621310	Offices of Chiropractors	454	480	199	64	0	<10	182
621320	Offices of Optometrists	415	419	196	102	38	<10	79
621399	Offices of All Other Miscellaneous Health Practitioners	390	391	324	17	0	<10	48
621112	Offices of Physicians, Mental Health Specialists	363	376	144	152	0	0	67
621498	All Other Outpatient Care Centers	341	356	69	102	0	26	144
446130	Optical Goods Stores	307	330	238	34	0	0	35
621991	Blood and Organ Banks	295	296	272	0	0	0	23
621330	Offices of Mental Health Practitioners (except Physicians)	250	263	117	100	0	0	33
902622	Hospitals (State Government)	239	258	0	85	0	0	154
532283	Home Health Equipment Rental	154	154	114	18	0	0	22
621512	Diagnostic Imaging Centers	136	136	72	36	0	0	28
621999	All Other Miscellaneous Ambulatory Health Care Services	104	110	21	33	0	<10	49
339116	Dental Laboratories	102	102	34	<10	<10	12	55
621391	Offices of Podiatrists	78	79	41	15	0	0	21
	Total	66,443	68,804	32,941	18,738	469	822	13,473

Industry	Description	5 Parish Region	New Orleans MSA	Jefferson Parish, LA	Orleans Parish, LA	Plaquemines Parish, LA	St. Bernard Parish, LA	St. Tammany Parish, LA
541714	Research and Development in Biotechnology (except Nanobiotechnology)	62	62	<10	25	<10	0	29
621410	Family Planning Centers	51	51	25	26	0	0	0
621491	HMO Medical Centers	26	26	0	<10	0	0	21
541713	Research and Development in Nanotechnology	<10	<10	<10	<10	0	0	<10
	Total	66,443	68,804	32,941	18,738	469	822	13,473

Industry Breakdown - Change

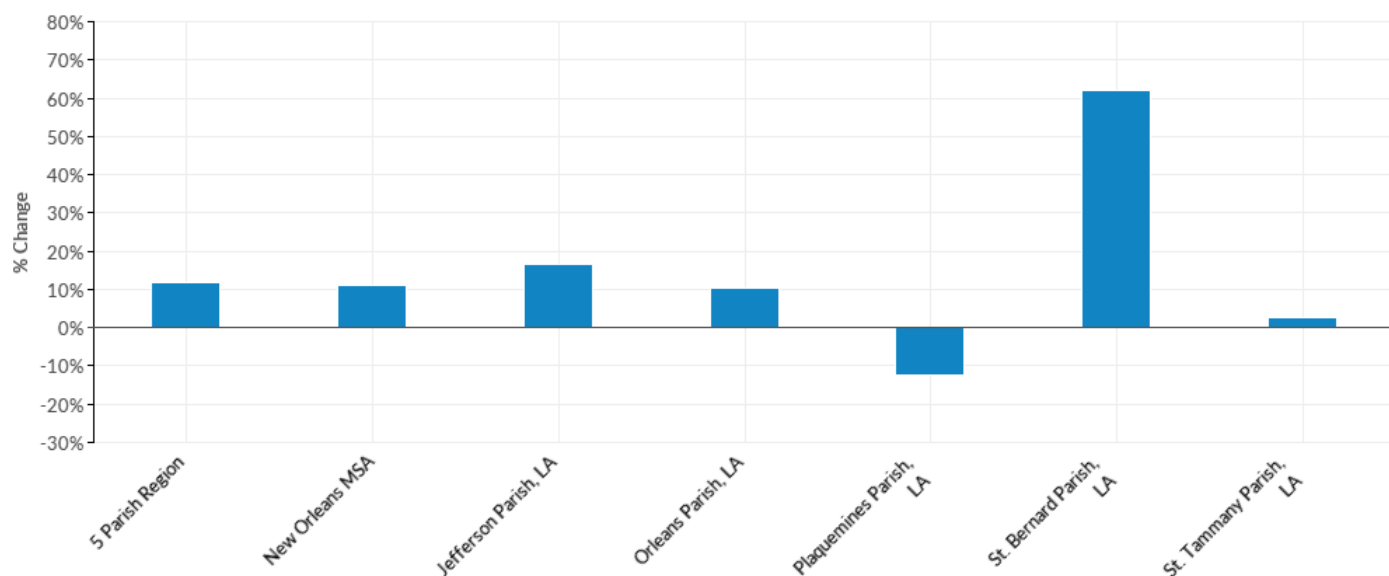


Industry	Description	5 Parish Region	New Orleans MSA	Jefferson Parish, LA	Orleans Parish, LA	Plaquemines Parish, LA	St. Bernard Parish, LA	St. Tammany Parish, LA
622110	General Medical and Surgical Hospitals	5,595	5,432	3,952	960	0	--	516
621111	Offices of Physicians (except Mental Health Specialists)	2,732	3,101	650	1,989	15	-66	144
621340	Offices of Physical, Occupational and Speech Therapists, and Audiologists	608	617	451	92	--	--	39
446110	Pharmacies and Drug Stores	499	510	98	228	6	24	144
623312	Assisted Living Facilities for the Elderly	469	489	272	-24	0	0	220
621210	Offices of Dentists	417	468	184	84	2	23	124
621511	Medical Laboratories	391	391	272	62	--	--	50
622210	Psychiatric and Substance Abuse Hospitals	384	384	165	51	0	0	168
621399	Offices of All Other Miscellaneous Health Practitioners	284	285	264	--	0	--	12
623311	Continuing Care Retirement Communities	278	278	0	287	0	0	-9
621420	Outpatient Mental Health and Substance Abuse Centers	234	223	70	223	0	--	-60
623220	Residential Mental Health and Substance Abuse Facilities	224	225	108	138	--	0	--
	Total	6,967	6,893	4,646	1,733	-67	315	341

Industry	Description	5 Parish Region	New Orleans MSA	Jefferson Parish, LA	Orleans Parish, LA	Plaquemines Parish, LA	St. Bernard Parish, LA	St. Tammany Parish, LA
621492	Kidney Dialysis Centers	223	160	90	93	0	--	43
621493	Freestanding Ambulatory Surgical and Emergency Centers	163	185	115	48	0	--	-1
621310	Offices of Chiropractors	151	156	50	14	0	--	85
621991	Blood and Organ Banks	127	127	137	--	0	0	-9
446130	Optical Goods Stores	112	125	98	21	0	0	-7
621330	Offices of Mental Health Practitioners (except Physicians)	107	117	33	59	0	0	15
621498	All Other Outpatient Care Centers	79	94	-38	71	0	8	37
621320	Offices of Optometrists	53	41	-40	27	--	--	35
623110	Nursing Care Facilities (Skilled Nursing Facilities)	40	0	-254	242	-52	51	54
623210	Residential Intellectual and Developmental Disability Facilities	32	12	-110	-103	9	89	148
532283	Home Health Equipment Rental	24	24	25	--	0	0	-13
621491	HMO Medical Centers	--	--	0	--	0	0	--
621910	Ambulance Services	7	15	-53	--	0	12	35
621410	Family Planning Centers	1	1	-10	12	0	0	0
541714	Research and Development in Biotechnology (except Nanobiotechnology)	-5	-5	--	5	--	0	-5
621391	Offices of Podiatrists	-8	-15	9	-7	0	0	-11
541713	Research and Development in Nanotechnology	--	--	--	--	--	0	--
621512	Diagnostic Imaging Centers	-31	-31	-22	17	0	--	-25
621999	All Other Miscellaneous Ambulatory Health Care Services	-34	-28	-22	--	--	--	-35
621112	Offices of Physicians, Mental Health Specialists	-52	-52	-44	-37	0	0	29
339116	Dental Laboratories	-55	-55	-29	--	--	--	-32
	Total	6,967	6,893	4,646	1,733	-67	315	341

Industry	Description	5 Parish Region	New Orleans MSA	Jefferson Parish, LA	Orleans Parish, LA	Plaquemines Parish, LA	St. Bernard Parish, LA	St. Tammany Parish, LA
622310	Specialty (except Psychiatric and Substance Abuse) Hospitals	-179	-189	-293	273	0	0	-158
621610	Home Health Care Services	-784	-801	-65	-493	-61	-17	-149
903622	Hospitals (Local Government)	-2,344	-2,617	-1,398	0	-17	0	-929
902622	Hospitals (State Government)	-2,767	-2,768	0	-2,648	0	-11	-108
	Total	6,967	6,893	4,646	1,733	-67	315	341

Industry Breakdown - % Change

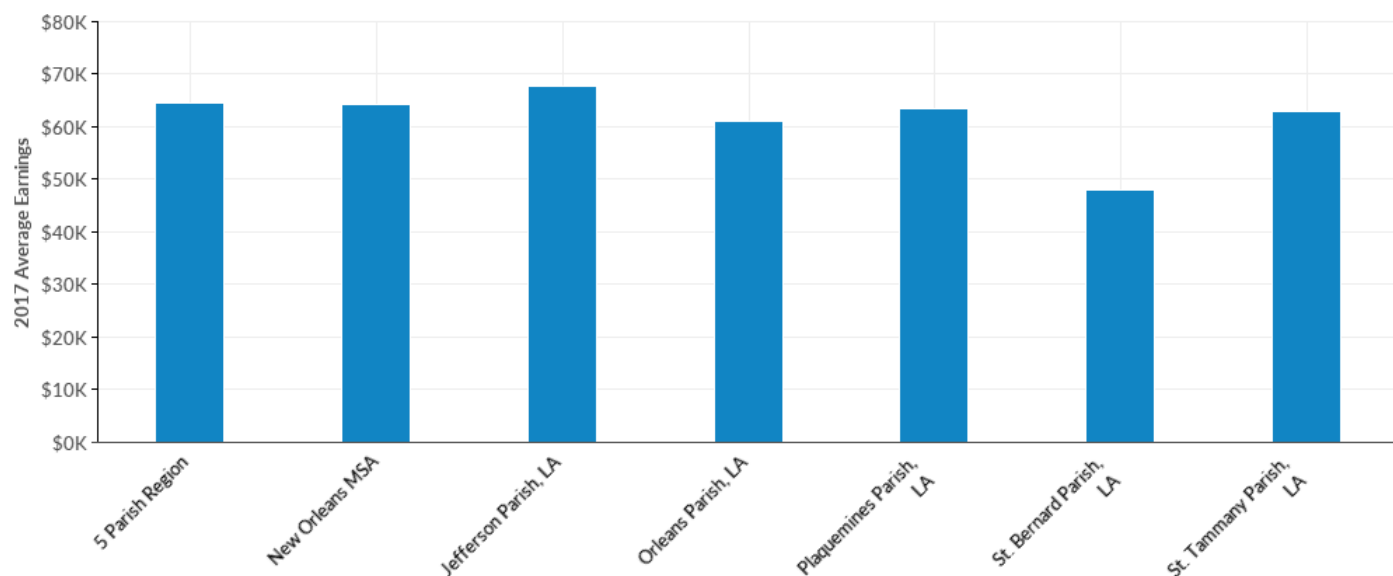


Industry	Description	5 Parish Region	New Orleans MSA	Jefferson Parish, LA	Orleans Parish, LA	Plaquemines Parish, LA	St. Bernard Parish, LA	St. Tammany Parish, LA
621491	HMO Medical Centers	--	--	0%	--	0%	0%	--
621399	Offices of All Other Miscellaneous Health Practitioners	268%	269%	440%	--	0%	--	33%
623312	Assisted Living Facilities for the Elderly	111%	116%	123%	-14%	0%	0%	629%
621340	Offices of Physical, Occupational and Speech Therapists, and Audiologists	95%	89%	175%	107%	--	--	13%
621511	Medical Laboratories	76%	76%	66%	148%	--	--	89%
621991	Blood and Organ Banks	76%	75%	101%	--	0%	0%	-28%
621330	Offices of Mental Health Practitioners (except Physicians)	75%	80%	39%	144%	0%	0%	83%
621420	Outpatient Mental Health and Substance Abuse Centers	69%	59%	96%	136%	0%	--	-59%
446130	Optical Goods Stores	57%	61%	70%	162%	0%	0%	-17%
623220	Residential Mental Health and Substance Abuse Facilities	55%	55%	71%	60%	--	0%	--
621310	Offices of Chiropractors	50%	48%	34%	28%	0%	--	88%
622210	Psychiatric and Substance Abuse Hospitals	46%	46%	115%	11%	0%	0%	72%
	Total	12%	11%	16%	10%	-13%	62%	3%

Industry	Description	5 Parish Region	New Orleans MSA	Jefferson Parish, LA	Orleans Parish, LA	Plaquemines Parish, LA	St. Bernard Parish, LA	St. Tammany Parish, LA
623311	Continuing Care Retirement Communities	43%	43%	0%	78%	0%	0%	-3%
622110	General Medical and Surgical Hospitals	41%	39%	57%	19%	0%	--	28%
621493	Freestanding Ambulatory Surgical and Emergency Centers	40%	45%	42%	137%	0%	--	-1%
621111	Offices of Physicians (except Mental Health Specialists)	34%	37%	16%	129%	136%	-49%	6%
621492	Kidney Dialysis Centers	33%	22%	22%	68%	0%	--	37%
621498	All Other Outpatient Care Centers	30%	36%	-36%	229%	0%	44%	35%
532283	Home Health Equipment Rental	18%	18%	28%	--	0%	0%	-37%
621210	Offices of Dentists	16%	17%	14%	19%	7%	49%	15%
621320	Offices of Optometrists	15%	11%	-17%	36%	--	--	80%
446110	Pharmacies and Drug Stores	15%	14%	6%	23%	33%	24%	21%
623210	Residential Intellectual and Developmental Disability Facilities	3%	1%	-15%	-66%	32%	371%	239%
621410	Family Planning Centers	2%	2%	-29%	86%	0%	0%	0%
621910	Ambulance Services	2%	3%	-14%	--	0%	63%	56%
623110	Nursing Care Facilities (Skilled Nursing Facilities)	1%	0%	-14%	17%	-34%	364%	6%
622310	Specialty (except Psychiatric and Substance Abuse) Hospitals	-6%	-6%	-34%	17%	0%	0%	-35%
541714	Research and Development in Biotechnology (except Nanobiotechnology)	-7%	-7%	--	25%	--	0%	-15%
621391	Offices of Podiatrists	-9%	-16%	28%	-32%	0%	0%	-34%
621112	Offices of Physicians, Mental Health Specialists	-13%	-12%	-23%	-20%	0%	0%	76%
621512	Diagnostic Imaging Centers	-19%	-19%	-23%	89%	0%	--	-47%
621610	Home Health Care Services	-20%	-18%	-3%	-51%	-100%	-16%	-19%
	Total	12%	11%	16%	10%	-13%	62%	3%

Industry	Description	5 Parish Region	New Orleans MSA	Jefferson Parish, LA	Orleans Parish, LA	Plaquemines Parish, LA	St. Bernard Parish, LA	St. Tammany Parish, LA
621999	All Other Miscellaneous Ambulatory Health Care Services	-25%	-20%	-51%	--	--	--	-42%
903622	Hospitals (Local Government)	-29%	-31%	-28%	0%	-8%	0%	-32%
339116	Dental Laboratories	-35%	-35%	-46%	--	--	--	-37%
541713	Research and Development in Nanotechnology	--	--	--	--	--	0%	--
902622	Hospitals (State Government)	-92%	-91%	0%	-97%	0%	-100%	-41%
	Total	12%	11%	16%	10%	-13%	62%	3%

Industry Breakdown - 2017 Average Earnings

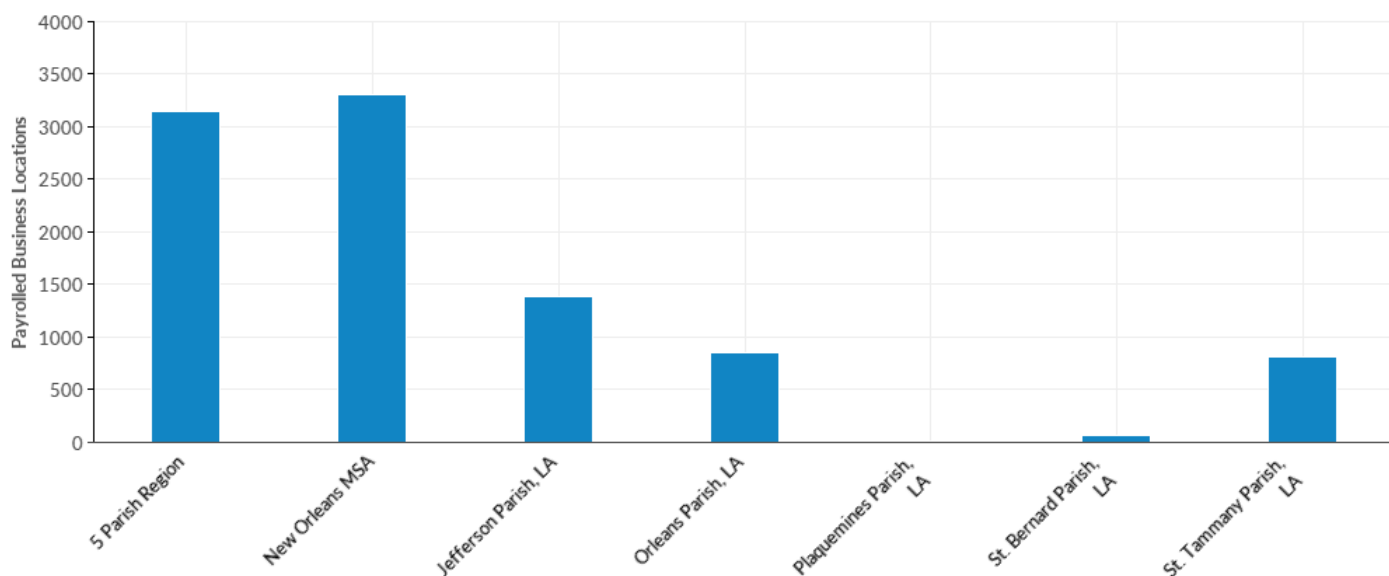


Industry	Description	5 Parish Region	New Orleans MSA	Jefferson Parish, LA	Orleans Parish, LA	Plaquemines Parish, LA	St. Bernard Parish, LA	St. Tammany Parish, LA
541714	Research and Development in Biotechnology (except Nanobiotechnology)	\$126,043	\$126,043	--	\$91,603	--	\$0	\$162,779
621491	HMO Medical Centers	\$124,768	\$124,768	\$0	--	\$0	\$0	\$143,710
541713	Research and Development in Nanotechnology	--	--	--	--	\$0	\$0	--
621111	Offices of Physicians (except Mental Health Specialists)	\$84,649	\$83,653	\$85,966	\$79,940	\$77,020	\$74,239	\$89,184
622110	General Medical and Surgical Hospitals	\$79,276	\$79,055	\$87,371	\$66,618	\$0	\$79,067	\$72,976
621512	Diagnostic Imaging Centers	\$76,370	\$76,688	\$72,949	\$99,858	\$0	\$0	\$54,338
621399	Offices of All Other Miscellaneous Health Practitioners	\$74,665	\$74,563	\$77,135	\$50,579	\$0	--	\$71,021
622310	Specialty (except Psychiatric and Substance Abuse) Hospitals	\$73,974	\$73,974	\$74,337	\$76,057	\$0	\$0	\$58,472
902622	Hospitals (State Government)	\$73,102	\$74,277	\$0	\$82,310	\$0	\$0	\$68,476
903622	Hospitals (Local Government)	\$67,863	\$68,545	\$64,704	\$0	\$79,131	\$0	\$72,442
	Total	\$64,570	\$64,222	\$67,726	\$61,023	\$63,358	\$48,024	\$62,838

Industry	Description	5 Parish Region	New Orleans MSA	Jefferson Parish, LA	Orleans Parish, LA	Plaquemines Parish, LA	St. Bernard Parish, LA	St. Tammany Parish, LA
532283	Home Health Equipment Rental	\$62,885	\$62,885	\$66,294	--	\$0	\$0	\$52,863
621492	Kidney Dialysis Centers	\$62,172	\$61,956	\$60,468	\$61,932	\$0	--	\$68,139
621112	Offices of Physicians, Mental Health Specialists	\$58,698	\$58,730	\$48,864	\$66,844	\$0	\$0	\$61,280
621999	All Other Miscellaneous Ambulatory Health Care Services	\$58,329	\$58,826	\$45,543	\$58,855	\$0	--	\$62,309
621210	Offices of Dentists	\$53,683	\$53,360	\$54,589	\$52,003	\$72,274	\$45,551	\$53,299
621498	All Other Outpatient Care Centers	\$53,049	\$53,225	\$54,017	\$54,704	\$0	\$50,302	\$51,785
621991	Blood and Organ Banks	\$51,279	\$51,449	\$49,547	\$0	\$0	\$0	\$74,898
621511	Medical Laboratories	\$50,583	\$50,754	\$48,249	\$66,551	\$31,556	--	\$49,988
621493	Freestanding Ambulatory Surgical and Emergency Centers	\$50,545	\$50,769	\$56,549	\$38,718	\$0	--	\$38,107
621340	Offices of Physical, Occupational and Speech Therapists, and Audiologists	\$50,073	\$50,025	\$49,706	\$53,146	--	\$49,517	\$49,266
621391	Offices of Podiatrists	\$48,595	\$48,689	\$51,438	\$29,128	\$0	\$0	\$57,433
446110	Pharmacies and Drug Stores	\$48,194	\$48,893	\$49,720	\$44,493	\$43,328	\$44,707	\$51,118
622210	Psychiatric and Substance Abuse Hospitals	\$46,908	\$46,908	\$49,179	\$51,290	\$0	\$0	\$41,034
621410	Family Planning Centers	\$46,894	\$46,894	\$43,916	\$49,302	\$0	\$0	\$0
623220	Residential Mental Health and Substance Abuse Facilities	\$45,979	\$45,954	\$47,249	\$45,080	\$0	--	--
621320	Offices of Optometrists	\$44,704	\$44,521	\$47,335	\$44,257	\$43,624	--	\$39,495
621910	Ambulance Services	\$44,209	\$44,240	\$43,679	\$59,760	\$0	\$38,155	\$44,918
621330	Offices of Mental Health Practitioners (except Physicians)	\$43,787	\$43,595	\$44,458	\$42,538	\$0	\$0	\$45,442
621310	Offices of Chiropractors	\$42,565	\$43,320	\$42,001	\$42,592	\$0	--	\$43,456
339116	Dental Laboratories	\$42,362	\$42,362	\$43,322	--	--	\$32,545	\$42,050
	Total	\$64,570	\$64,222	\$67,726	\$61,023	\$63,358	\$48,024	\$62,838

Industry	Description	5 Parish Region	New Orleans MSA	Jefferson Parish, LA	Orleans Parish, LA	Plaquemines Parish, LA	St. Bernard Parish, LA	St. Tammany Parish, LA
621420	Outpatient Mental Health and Substance Abuse Centers	\$42,225	\$42,409	\$46,996	\$41,080	\$0	--	\$37,471
621610	Home Health Care Services	\$36,833	\$36,832	\$38,305	\$29,394	\$0	\$18,747	\$40,592
623311	Continuing Care Retirement Communities	\$35,522	\$35,522	\$0	\$35,602	\$0	\$0	\$35,350
623110	Nursing Care Facilities (Skilled Nursing Facilities)	\$34,705	\$34,402	\$32,948	\$35,402	\$52,892	\$28,158	\$34,738
446130	Optical Goods Stores	\$29,956	\$30,742	\$29,527	\$27,126	\$0	\$0	\$36,102
623210	Residential Intellectual and Developmental Disability Facilities	\$27,040	\$26,751	\$25,856	\$20,000	\$29,907	\$26,092	\$32,286
623312	Assisted Living Facilities for the Elderly	\$25,641	\$25,639	\$23,230	\$30,707	\$0	\$0	\$27,521
	Total	\$64,570	\$64,222	\$67,726	\$61,023	\$63,358	\$48,024	\$62,838

Industry Breakdown - Payrolled Business Locations

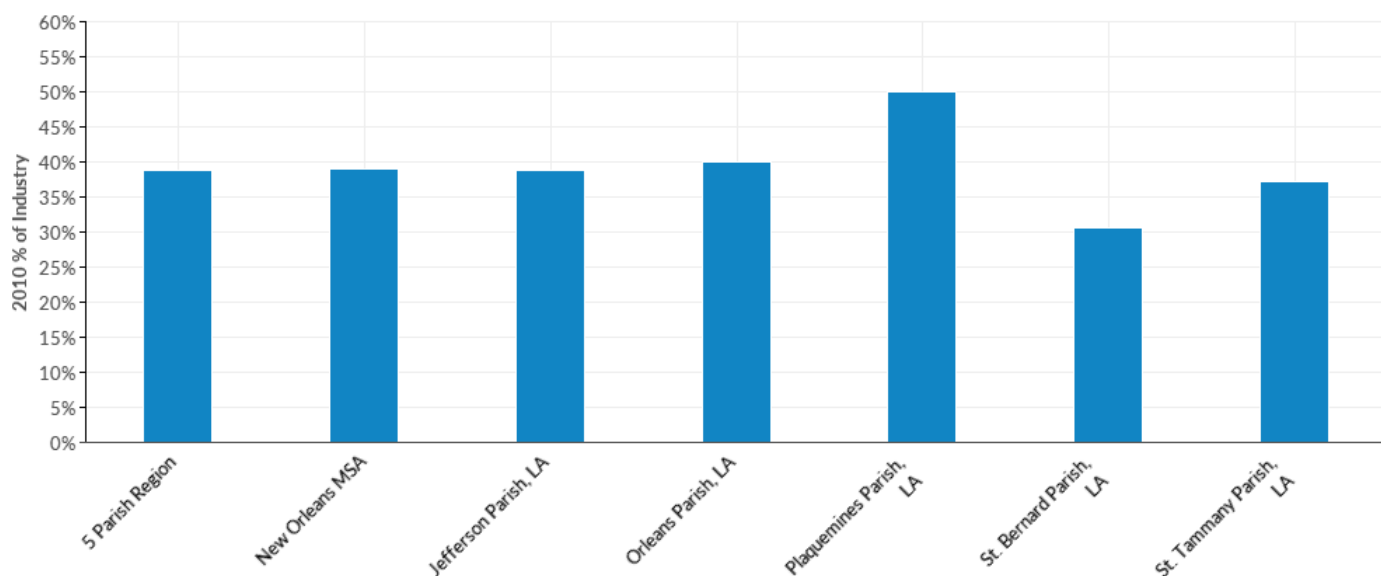


Industry	Description	5 Parish Region	New Orleans MSA	Jefferson Parish, LA	Orleans Parish, LA	Plaquemines Parish, LA	St. Bernard Parish, LA	St. Tammany Parish, LA
621111	Offices of Physicians (except Mental Health Specialists)	963	1,005	449	244	3	15	252
621210	Offices of Dentists	466	491	217	109	4	8	128
446110	Pharmacies and Drug Stores	333	349	129	112	3	11	78
621610	Home Health Care Services	123	136	56	35	0	4	28
621340	Offices of Physical, Occupational and Speech Therapists, and Audiologists	115	123	53	21	1	2	38
621511	Medical Laboratories	110	112	44	31	2	2	32
621310	Offices of Chiropractors	95	99	47	15	0	2	31
621330	Offices of Mental Health Practitioners (except Physicians)	82	83	32	33	0	0	17
621112	Offices of Physicians, Mental Health Specialists	66	67	22	35	0	0	9
621320	Offices of Optometrists	62	65	27	13	2	1	20
621399	Offices of All Other Miscellaneous Health Practitioners	62	65	25	17	0	1	19
622110	General Medical and Surgical Hospitals	61	63	33	14	0	1	13
621492	Kidney Dialysis Centers	55	58	24	17	0	1	13
	Total	3,151	3,305	1,391	859	19	64	819

Industry	Description	5 Parish Region	New Orleans MSA	Jefferson Parish, LA	Orleans Parish, LA	Plaquemines Parish, LA	St. Bernard Parish, LA	St. Tammany Parish, LA
623110	Nursing Care Facilities (Skilled Nursing Facilities)	50	54	20	18	1	1	11
621420	Outpatient Mental Health and Substance Abuse Centers	48	53	22	21	0	1	5
621999	All Other Miscellaneous Ambulatory Health Care Services	45	47	20	12	0	2	11
621493	Freestanding Ambulatory Surgical and Emergency Centers	44	45	25	10	0	2	6
446130	Optical Goods Stores	42	47	25	9	0	0	8
623210	Residential Intellectual and Developmental Disability Facilities	41	45	9	7	1	3	22
621498	All Other Outpatient Care Centers	39	40	12	8	0	2	16
623312	Assisted Living Facilities for the Elderly	32	33	19	8	0	0	5
339116	Dental Laboratories	29	29	14	1	1	4	9
621512	Diagnostic Imaging Centers	29	30	13	6	0	0	10
623220	Residential Mental Health and Substance Abuse Facilities	28	29	8	17	0	0	3
621391	Offices of Podiatrists	21	22	10	5	0	0	6
541714	Research and Development in Biotechnology (except Nanobiotechnology)	19	19	3	12	0	0	4
622310	Specialty (except Psychiatric and Substance Abuse) Hospitals	17	17	6	6	0	0	5
622210	Psychiatric and Substance Abuse Hospitals	16	16	7	5	0	0	4
623311	Continuing Care Retirement Communities	12	12	0	7	0	0	4
621991	Blood and Organ Banks	11	12	8	0	0	0	3
532283	Home Health Equipment Rental	11	11	7	1	0	0	3
621910	Ambulance Services	8	9	3	3	0	1	1
	Total	3,151	3,305	1,391	859	19	64	819

Industry	Description	5 Parish Region	New Orleans MSA	Jefferson Parish, LA	Orleans Parish, LA	Plaquemines Parish, LA	St. Bernard Parish, LA	St. Tammany Parish, LA
621491	HMO Medical Centers	5	5	0	2	0	0	3
621410	Family Planning Centers	5	5	2	3	0	0	0
903622	Hospitals (Local Government)	4	5	1	0	1	0	2
902622	Hospitals (State Government)	4	5	0	1	0	0	3
541713	Research and Development in Nanotechnology	2	2	0	2	0	0	0
	Total	3,151	3,305	1,391	859	19	64	819

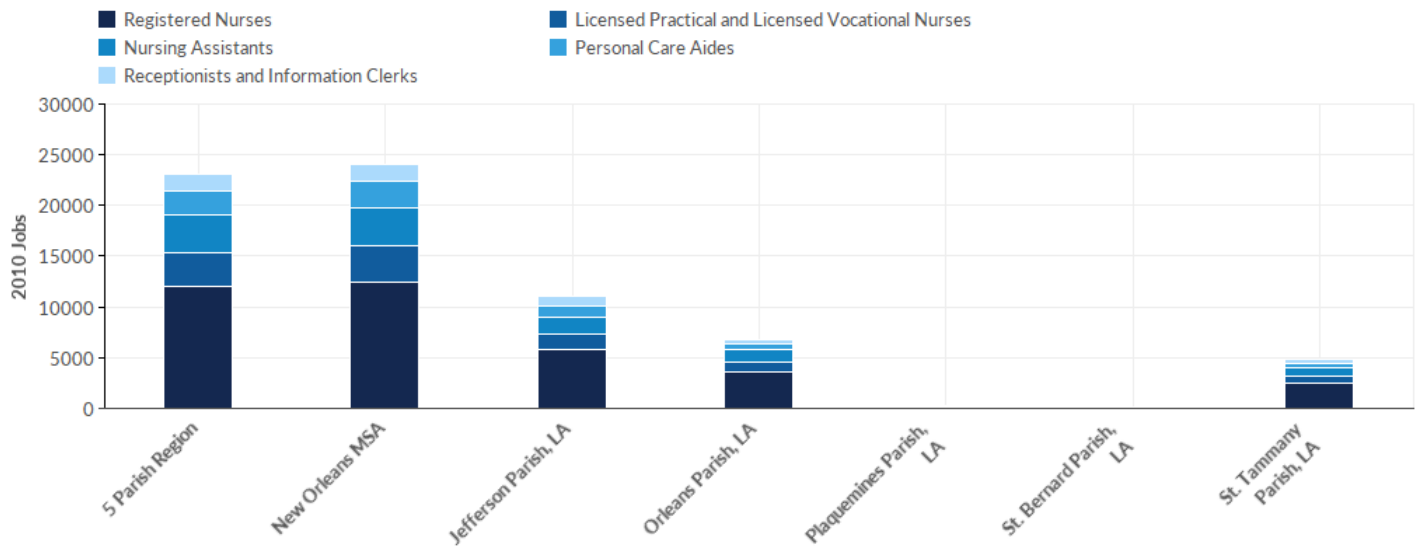
Top Occupations - 2010 % of Industry



SOC Code	Description	5 Parish Region	New Orleans MSA	Jefferson Parish, LA	Orleans Parish, LA	Plaquemines Parish, LA	St. Bernard Parish, LA	St. Tammany Parish, LA
29-1141	Registered Nurses	20%	20%	20%	21%	19%	9%	19%
31-1014	Nursing Assistants	6%	6%	6%	7%	12%	3%	6%
29-2061	Licensed Practical and Licensed Vocational Nurses	6%	6%	6%	6%	10%	5%	6%
39-9021	Personal Care Aides	4%	4%	4%	4%	7%	9%	3%
43-4171	Receptionists and Information Clerks	3%	3%	3%	2%	2%	4%	3%
	Total	39%	39%	39%	40%	50%	31%	37%

Source: QCEW Employees - Emsi 2017.4 Class of Worker

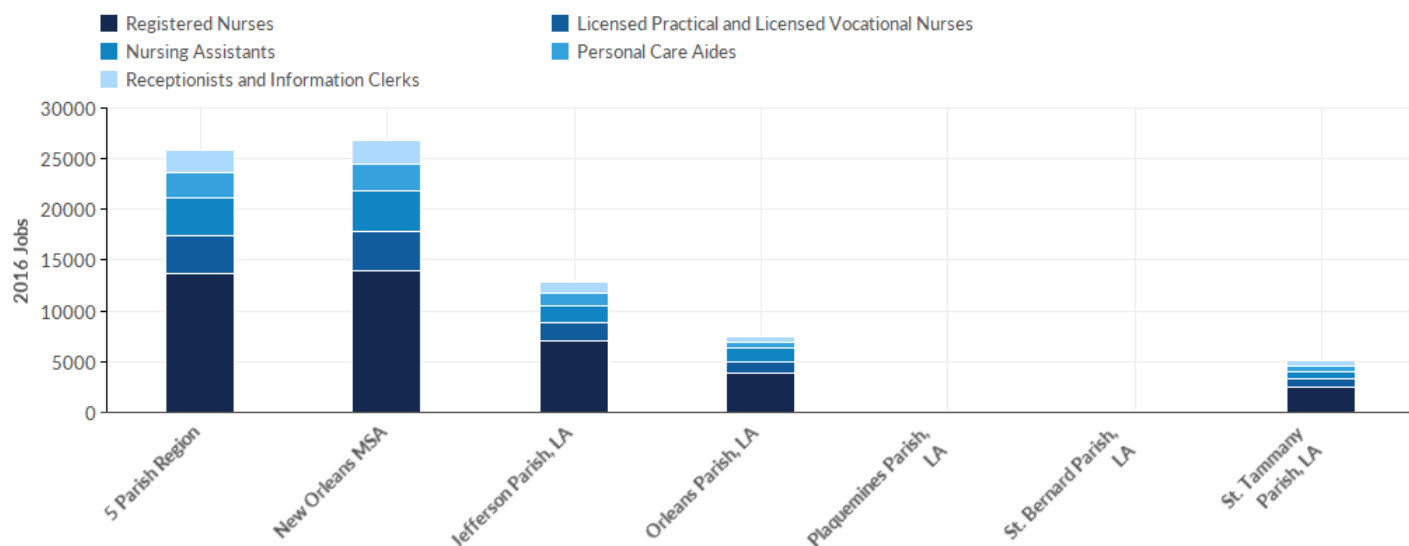
Top Occupations - 2010 Jobs



SOC Code	Description	5 Parish Region	New Orleans MSA	Jefferson Parish, LA	Orleans Parish, LA	Plaquemines Parish, LA	St. Bernard Parish, LA	St. Tammany Parish, LA
29-1141	Registered Nurses	11,975	12,394	5,738	3,630	101	45	2,461
31-1014	Nursing Assistants	3,683	3,861	1,615	1,210	66	13	779
29-2061	Licensed Practical and Licensed Vocational Nurses	3,400	3,576	1,571	965	53	26	784
39-9021	Personal Care Aides	2,342	2,502	1,231	623	40	48	400
43-4171	Receptionists and Information Clerks	1,693	1,763	846	359	<10	22	458
	Total	23,092	24,096	11,000	6,787	268	155	4,882

Source: QCEW Employees - Emsi 2017.4 Class of Worker

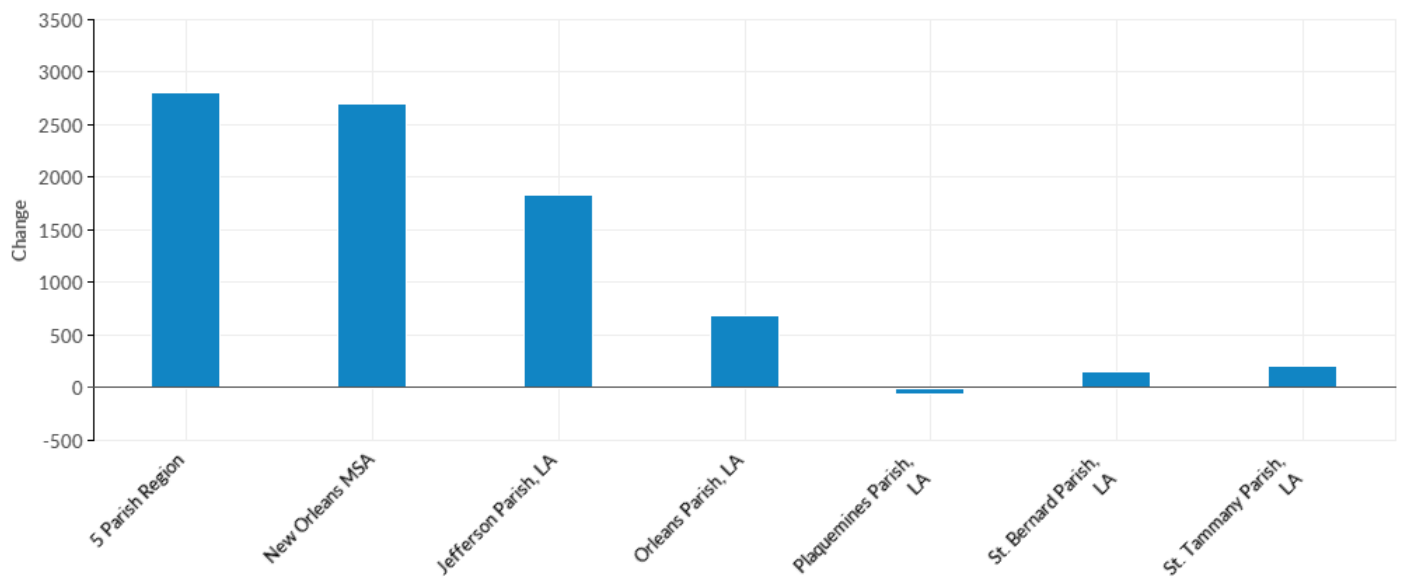
Top Occupations - 2016 Jobs



SOC Code	Description	5 Parish Region	New Orleans MSA	Jefferson Parish, LA	Orleans Parish, LA	Plaquemines Parish, LA	St. Bernard Parish, LA	St. Tammany Parish, LA
29-1141	Registered Nurses	13,635	13,945	7,116	3,862	85	108	2,464
31-1014	Nursing Assistants	3,822	3,963	1,692	1,267	46	40	776
29-2061	Licensed Practical and Licensed Vocational Nurses	3,746	3,926	1,682	1,180	36	39	808
39-9021	Personal Care Aides	2,450	2,601	1,279	537	25	98	511
43-4171	Receptionists and Information Clerks	2,248	2,361	1,059	624	13	22	530
	Total	25,901	26,797	12,829	7,471	205	308	5,088

Source: QCEW Employees - Emsi 2017.4 Class of Worker

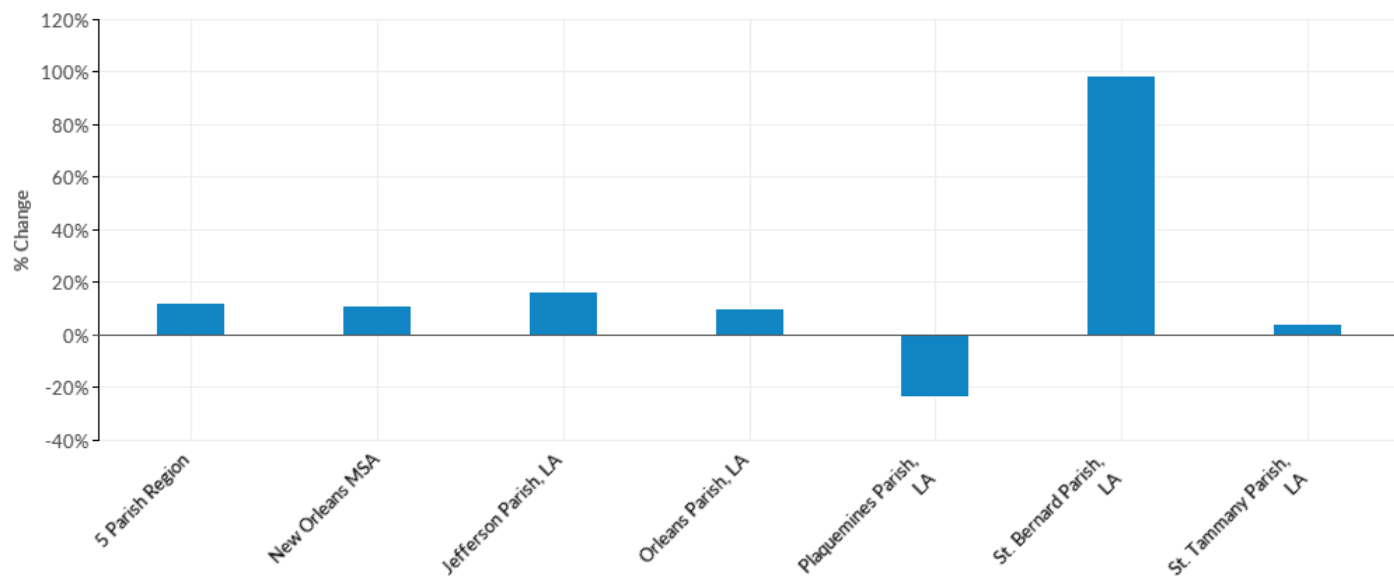
Top Occupations - Change



SOC Code	Description	5 Parish Region	New Orleans MSA	Jefferson Parish, LA	Orleans Parish, LA	Plaquemines Parish, LA	St. Bernard Parish, LA	St. Tammany Parish, LA
29-1141	Registered Nurses	1,660	1,551	1,378	232	-16	63	3
43-4171	Receptionists and Information Clerks	555	598	213	265	--	0	72
29-2061	Licensed Practical and Licensed Vocational Nurses	346	350	111	215	-17	13	24
31-1014	Nursing Assistants	139	102	77	57	-20	27	-3
39-9021	Personal Care Aides	108	99	48	-86	-15	50	111
	Total	2,809	2,701	1,829	684	-63	153	206

Source: QCEW Employees - Emsi 2017.4 Class of Worker

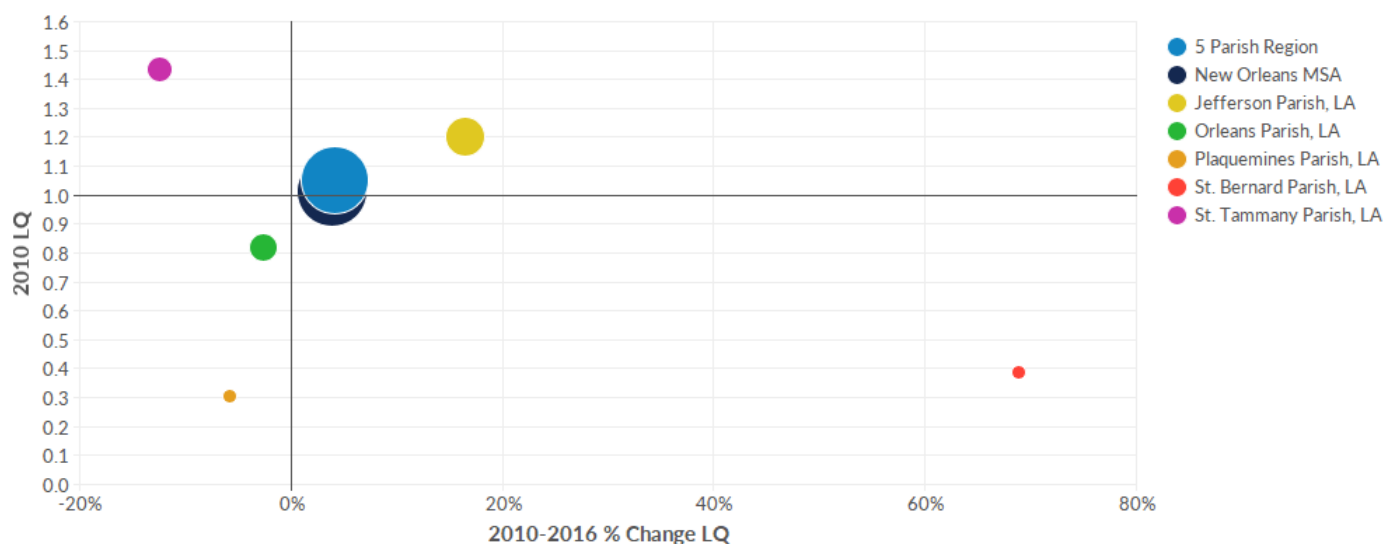
Top Occupations - % Change



SOC Code	Description	5 Parish Region	New Orleans MSA	Jefferson Parish, LA	Orleans Parish, LA	Plaquemines Parish, LA	St. Bernard Parish, LA	St. Tammany Parish, LA
43-4171	Receptionists and Information Clerks	33%	34%	25%	74%	--	0%	16%
29-1141	Registered Nurses	14%	13%	24%	6%	-16%	140%	0%
29-2061	Licensed Practical and Licensed Vocational Nurses	10%	10%	7%	22%	-32%	50%	3%
39-9021	Personal Care Aides	5%	4%	4%	-14%	-38%	104%	28%
31-1014	Nursing Assistants	4%	3%	5%	5%	-30%	208%	0%
	Total	12%	11%	17%	10%	-24%	99%	4%

Source: QCEW Employees - Emsi 2017.4 Class of Worker

Location Quotient Breakdown - 2010 National LQ



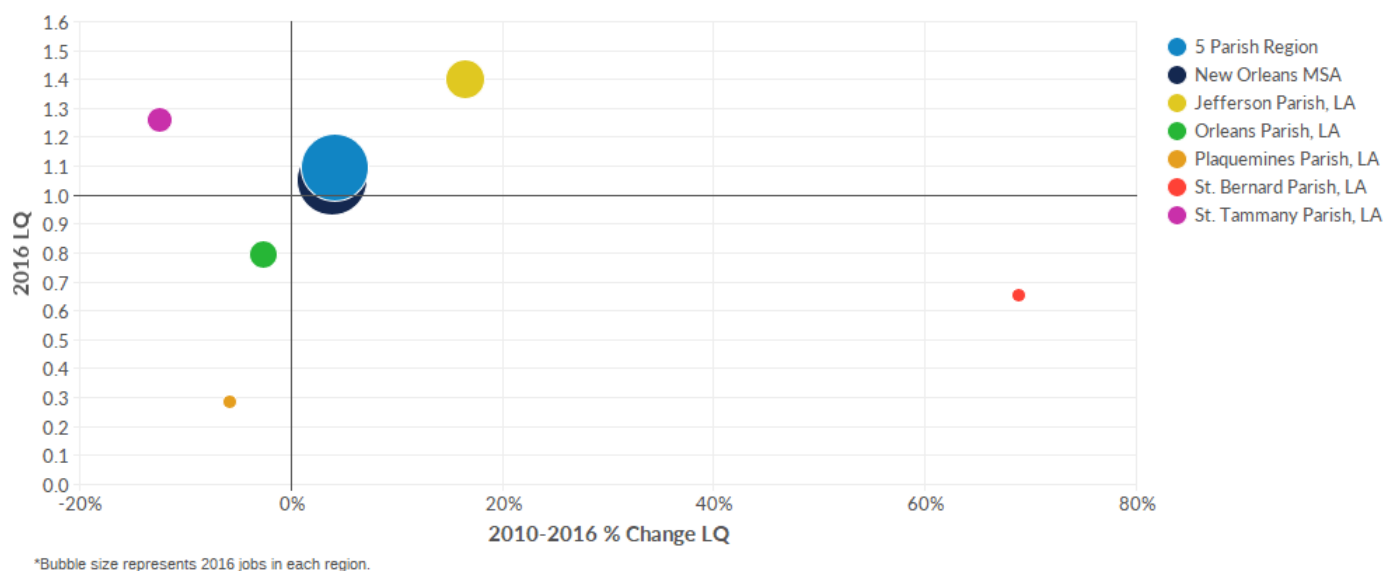
Industry	Description	5 Parish Region	New Orleans MSA	Jefferson Parish, LA	Orleans Parish, LA	Plaquemines Parish, LA	St. Bernard Parish, LA	St. Tammany Parish, LA
622310	Specialty (except Psychiatric and Substance Abuse) Hospitals	3.96	3.67	2.86	5.84	0.00	0.00	3.83
903622	Hospitals (Local Government)	3.43	3.33	5.06	0.00	3.03	0.00	7.57
621112	Offices of Physicians, Mental Health Specialists	2.50	2.38	2.72	3.09	0.00	0.00	1.40
902622	Hospitals (State Government)	2.41	2.24	0.00	5.95	0.00	0.39	1.30
622210	Psychiatric and Substance Abuse Hospitals	2.26	2.09	0.94	3.35	0.00	0.00	3.96
621492	Kidney Dialysis Centers	1.98	2.03	2.92	1.10	0.00	0.68	2.13
446110	Pharmacies and Drug Stores	1.33	1.30	1.53	1.04	0.22	1.69	1.63
621493	Freestanding Ambulatory Surgical and Emergency Centers	1.22	1.12	1.92	0.28	0.00	0.00	1.93
621999	All Other Miscellaneous Ambulatory Health Care Services	1.21	1.13	0.91	0.23	0.30	0.00	4.55
621610	Home Health Care Services	1.01	1.02	1.27	0.67	0.50	1.17	1.21
621111	Offices of Physicians (except Mental Health Specialists)	0.99	0.95	1.20	0.51	0.04	0.70	1.75
339116	Dental Laboratories	0.96	0.89	0.93	0.03	0.20	1.19	3.29
	Total	1.05	1.01	1.20	0.82	0.30	0.39	1.44

Industry	Description	5 Parish Region	New Orleans MSA	Jefferson Parish, LA	Orleans Parish, LA	Plaquemines Parish, LA	St. Bernard Parish, LA	St. Tammany Parish, LA
532283	Home Health Equipment Rental	0.92	0.85	1.51	0.12	0.00	0.00	1.52
621320	Offices of Optometrists	0.91	0.88	1.43	0.52	0.43	0.15	0.69
621210	Offices of Dentists	0.89	0.86	1.05	0.40	0.29	0.68	1.72
621511	Medical Laboratories	0.89	0.82	1.72	0.20	0.00	0.12	0.59
622110	General Medical and Surgical Hospitals	0.87	0.83	1.06	0.86	0.00	0.01	0.72
446130	Optical Goods Stores	0.85	0.83	1.47	0.15	0.00	0.00	1.14
621910	Ambulance Services	0.84	0.80	1.63	0.04	0.00	1.49	0.70
623110	Nursing Care Facilities (Skilled Nursing Facilities)	0.74	0.73	0.73	0.66	0.82	0.10	1.00
623210	Residential Intellectual and Developmental Disability Facilities	0.73	0.72	1.27	0.31	0.66	0.77	0.28
621498	All Other Outpatient Care Centers	0.71	0.65	0.69	0.23	0.00	2.05	1.78
621310	Offices of Chiropractors	0.70	0.70	0.83	0.32	0.00	0.67	1.40
621391	Offices of Podiatrists	0.68	0.68	0.61	0.47	0.00	0.00	1.56
621991	Blood and Organ Banks	0.68	0.63	1.31	0.00	0.00	0.00	0.80
621512	Diagnostic Imaging Centers	0.68	0.63	0.92	0.21	0.00	0.11	1.34
621410	Family Planning Centers	0.65	0.60	1.11	0.52	0.00	0.00	0.00
621330	Offices of Mental Health Practitioners (except Physicians)	0.64	0.61	0.91	0.50	0.00	0.00	0.50
621340	Offices of Physical, Occupational and Speech Therapists, and Audiologists	0.64	0.64	0.62	0.23	0.00	0.39	1.79
623220	Residential Mental Health and Substance Abuse Facilities	0.60	0.56	0.54	0.92	0.07	0.00	0.23
621420	Outpatient Mental Health and Substance Abuse Centers	0.53	0.55	0.28	0.70	0.00	0.00	0.99
623311	Continuing Care Retirement Communities	0.45	0.42	0.00	0.70	0.00	0.00	1.21
541713	Research and Development in Nanotechnology	0.43	0.42	0.55	0.37	0.22	0.00	0.38
	Total	1.05	1.01	1.20	0.82	0.30	0.39	1.44

Industry	Description	5 Parish Region	New Orleans MSA	Jefferson Parish, LA	Orleans Parish, LA	Plaquemines Parish, LA	St. Bernard Parish, LA	St. Tammany Parish, LA
621399	Offices of All Other Miscellaneous Health Practitioners	0.43	0.40	0.58	0.11	0.00	0.00	0.90
623312	Assisted Living Facilities for the Elderly	0.34	0.31	0.42	0.36	0.00	0.00	0.17
541714	Research and Development in Biotechnology (except Nanobiotechnology)	0.14	0.13	0.04	0.11	0.35	0.00	0.42
621491	HMO Medical Centers	0.01	0.01	0.00	0.02	0.00	0.00	0.02
	Total	1.05	1.01	1.20	0.82	0.30	0.39	1.44

Source: QCEW Employees - Emsi 2017.4 Class of Worker

Location Quotient Breakdown - 2016 National LQ



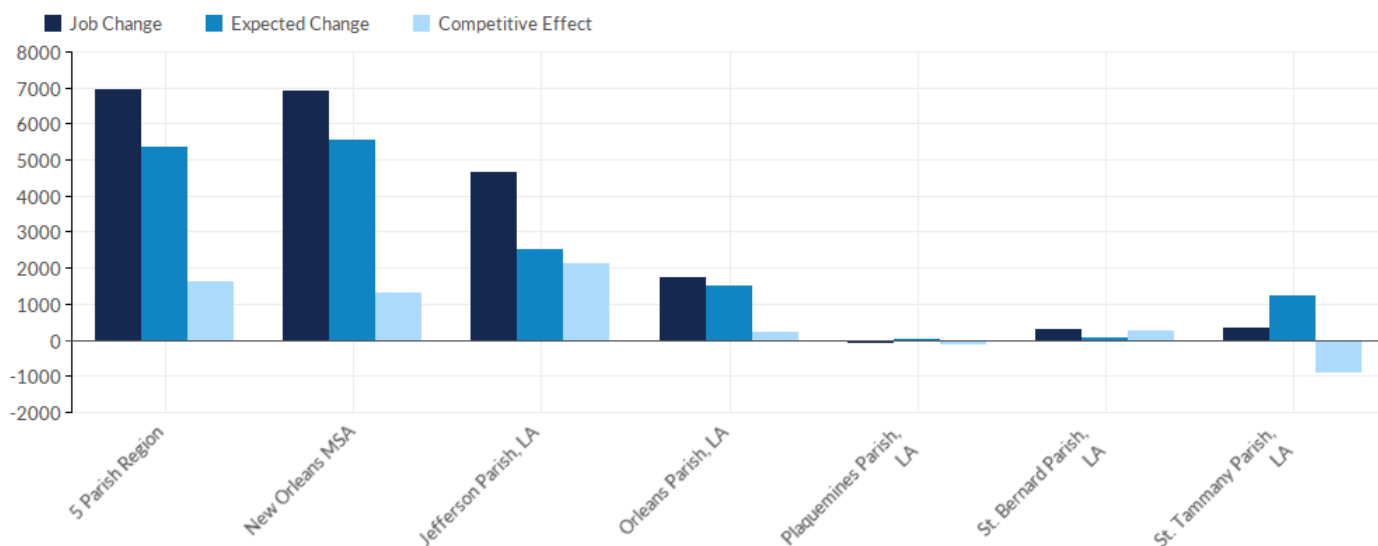
Industry	Description	5 Parish Region	New Orleans MSA	Jefferson Parish, LA	Orleans Parish, LA	Plaquemines Parish, LA	St. Bernard Parish, LA	St. Tammany Parish, LA
622310	Specialty (except Psychiatric and Substance Abuse) Hospitals	3.45	3.20	1.90	6.04	0.00	0.00	2.13
622210	Psychiatric and Substance Abuse Hospitals	3.02	2.80	1.98	3.22	0.00	0.00	5.67
903622	Hospitals (Local Government)	2.48	2.36	3.98	0.00	3.30	0.00	4.79
621492	Kidney Dialysis Centers	2.06	1.93	2.99	1.37	0.00	0.21	2.08
621112	Offices of Physicians, Mental Health Specialists	1.94	1.86	1.98	2.09	0.00	0.00	2.02
446110	Pharmacies and Drug Stores	1.54	1.50	1.75	1.23	0.34	2.37	1.83
621511	Medical Laboratories	1.33	1.24	2.60	0.39	0.34	0.11	0.88
621111	Offices of Physicians (except Mental Health Specialists)	1.25	1.23	1.41	1.05	0.11	0.38	1.62
621991	Blood and Organ Banks	1.24	1.15	2.94	0.00	0.00	0.00	0.54
446130	Optical Goods Stores	1.21	1.21	2.41	0.35	0.00	0.00	0.78
622110	General Medical and Surgical Hospitals	1.19	1.12	1.74	0.94	0.00	0.51	0.82
621493	Freestanding Ambulatory Surgical and Emergency Centers	1.15	1.11	2.00	0.43	0.00	0.08	1.19
532283	Home Health Equipment Rental	1.13	1.05	2.17	0.34	0.00	0.00	0.91
	Total	1.10	1.05	1.40	0.80	0.29	0.65	1.26

Industry	Description	5 Parish Region	New Orleans MSA	Jefferson Parish, LA	Orleans Parish, LA	Plaquemines Parish, LA	St. Bernard Parish, LA	St. Tammany Parish, LA
621399	Offices of All Other Miscellaneous Health Practitioners	1.06	0.99	2.28	0.12	0.00	0.08	0.74
621340	Offices of Physical, Occupational and Speech Therapists, and Audiologists	0.98	0.95	1.43	0.36	0.02	1.28	1.46
621310	Offices of Chiropractors	0.98	0.96	1.10	0.35	0.00	0.96	2.21
621210	Offices of Dentists	0.95	0.93	1.19	0.42	0.33	1.05	1.67
621320	Offices of Optometrists	0.90	0.84	1.10	0.57	3.05	0.07	0.97
621330	Offices of Mental Health Practitioners (except Physicians)	0.86	0.84	1.04	0.89	0.00	0.00	0.64
623220	Residential Mental Health and Substance Abuse Facilities	0.81	0.75	0.86	1.21	0.00	0.00	0.03
621910	Ambulance Services	0.78	0.76	1.38	0.09	0.00	2.47	0.92
623110	Nursing Care Facilities (Skilled Nursing Facilities)	0.78	0.77	0.71	0.76	0.66	0.55	1.01
623210	Residential Intellectual and Developmental Disability Facilities	0.74	0.71	1.14	0.10	0.99	3.94	0.86
621420	Outpatient Mental Health and Substance Abuse Centers	0.73	0.71	0.47	1.27	0.00	0.02	0.30
621410	Family Planning Centers	0.68	0.63	0.86	0.88	0.00	0.00	0.00
621610	Home Health Care Services	0.67	0.69	1.09	0.25	0.00	0.90	0.73
339116	Dental Laboratories	0.65	0.60	0.56	0.01	0.11	3.83	1.97
621498	All Other Outpatient Care Centers	0.65	0.63	0.34	0.50	0.00	2.40	1.55
621391	Offices of Podiatrists	0.62	0.59	0.85	0.32	0.00	0.00	0.97
623312	Assisted Living Facilities for the Elderly	0.61	0.58	0.87	0.25	0.00	0.00	0.98
621999	All Other Miscellaneous Ambulatory Health Care Services	0.58	0.57	0.30	0.47	0.00	0.41	1.53
623311	Continuing Care Retirement Communities	0.55	0.51	0.00	1.01	0.00	0.00	0.92
621512	Diagnostic Imaging Centers	0.54	0.50	0.74	0.37	0.00	0.00	0.63
	Total	1.10	1.05	1.40	0.80	0.29	0.65	1.26

Industry	Description	5 Parish Region	New Orleans MSA	Jefferson Parish, LA	Orleans Parish, LA	Plaquemines Parish, LA	St. Bernard Parish, LA	St. Tammany Parish, LA
902622	Hospitals (State Government)	0.19	0.19	0.00	0.17	0.00	0.00	0.69
541714	Research and Development in Biotechnology (except Nanobiotechnology)	0.10	0.10	0.03	0.11	0.04	0.00	0.28
541713	Research and Development in Nanotechnology	0.07	0.08	0.04	0.14	0.00	0.00	0.03
621491	HMO Medical Centers	0.04	0.04	0.00	0.02	0.00	0.00	0.17
	Total	1.10	1.05	1.40	0.80	0.29	0.65	1.26

Source: QCEW Employees - Emsi 2017.4 Class of Worker

Shift Share Breakdown - Job Change



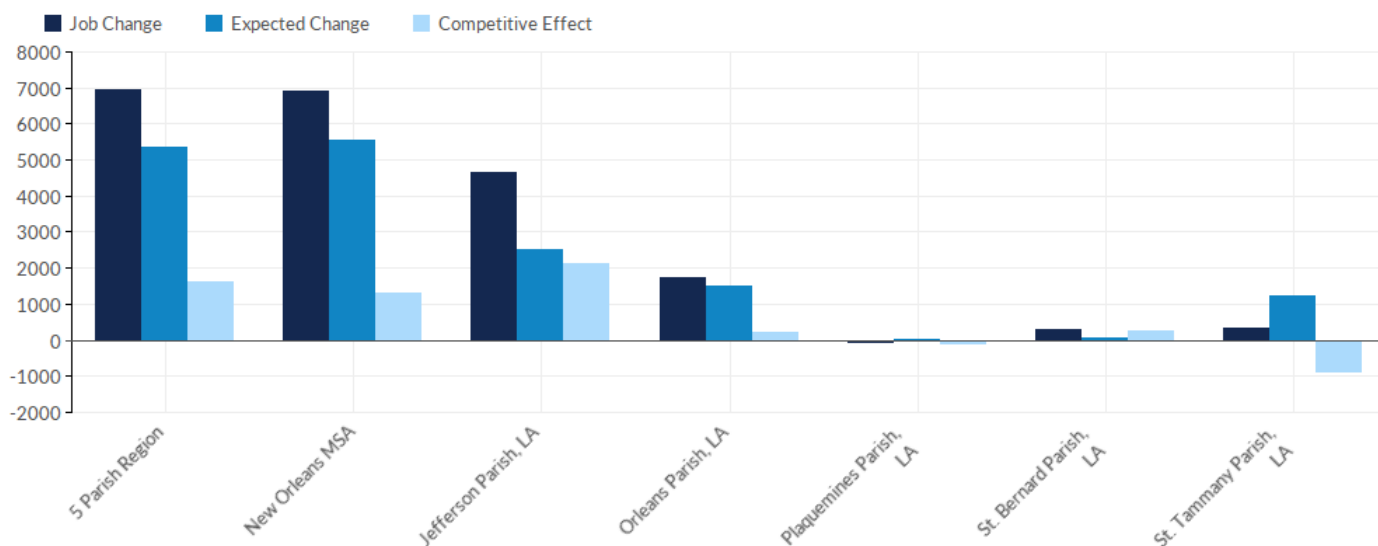
Industry	Description	5 Parish Region	New Orleans MSA	Jefferson Parish, LA	Orleans Parish, LA	Plaquemines Parish, LA	St. Bernard Parish, LA	St. Tammany Parish, LA
622110	General Medical and Surgical Hospitals	5,596	5,432	3,953	960	0	167	516
621111	Offices of Physicians (except Mental Health Specialists)	2,732	3,101	650	1,989	15	-66	144
621340	Offices of Physical, Occupational and Speech Therapists, and Audiologists	608	616	451	92	1	25	39
446110	Pharmacies and Drug Stores	499	510	98	228	6	24	143
623312	Assisted Living Facilities for the Elderly	468	488	272	-24	0	0	220
621210	Offices of Dentists	417	468	184	84	2	23	124
621511	Medical Laboratories	391	391	272	62	6	0	50
622210	Psychiatric and Substance Abuse Hospitals	384	384	165	52	0	0	168
621399	Offices of All Other Miscellaneous Health Practitioners	284	285	264	7	0	1	12
623311	Continuing Care Retirement Communities	279	279	0	287	0	0	-9
621420	Outpatient Mental Health and Substance Abuse Centers	233	223	70	223	0	0	-60
623220	Residential Mental Health and Substance Abuse Facilities	223	225	108	137	-1	0	-21
	Total	6,967	6,892	4,646	1,733	-67	314	341

Industry	Description	5 Parish Region	New Orleans MSA	Jefferson Parish, LA	Orleans Parish, LA	Plaquemines Parish, LA	St. Bernard Parish, LA	St. Tammany Parish, LA
621492	Kidney Dialysis Centers	222	160	90	93	0	-4	43
621493	Freestanding Ambulatory Surgical and Emergency Centers	163	185	115	47	0	1	-1
621310	Offices of Chiropractors	151	156	50	14	0	3	85
621991	Blood and Organ Banks	127	127	137	0	0	0	-9
446130	Optical Goods Stores	111	126	98	21	0	0	-7
621330	Offices of Mental Health Practitioners (except Physicians)	107	117	33	59	0	0	15
621498	All Other Outpatient Care Centers	79	94	-38	71	0	9	37
621320	Offices of Optometrists	54	41	-40	27	33	-1	35
623110	Nursing Care Facilities (Skilled Nursing Facilities)	40	0	-254	241	-52	51	54
623210	Residential Intellectual and Developmental Disability Facilities	32	12	-110	-104	9	89	148
532283	Home Health Equipment Rental	24	24	25	11	0	0	-13
621491	HMO Medical Centers	22	22	0	3	0	0	19
621910	Ambulance Services	7	15	-53	13	0	12	36
621410	Family Planning Centers	2	2	-10	11	0	0	0
541714	Research and Development in Biotechnology (except Nanobiotechnology)	-5	-5	-1	5	-5	0	-5
621391	Offices of Podiatrists	-8	-15	9	-7	0	0	-11
541713	Research and Development in Nanotechnology	-29	-30	-17	-6	-1	0	-4
621512	Diagnostic Imaging Centers	-31	-30	-22	17	0	-1	-25
621999	All Other Miscellaneous Ambulatory Health Care Services	-34	-29	-23	23	-1	2	-35
621112	Offices of Physicians, Mental Health Specialists	-52	-52	-44	-37	0	0	29
339116	Dental Laboratories	-55	-55	-29	-1	-1	8	-32
	Total	6,967	6,892	4,646	1,733	-67	314	341

Industry	Description	5 Parish Region	New Orleans MSA	Jefferson Parish, LA	Orleans Parish, LA	Plaquemines Parish, LA	St. Bernard Parish, LA	St. Tammany Parish, LA
622310	Specialty (except Psychiatric and Substance Abuse) Hospitals	-179	-189	-293	273	0	0	-158
621610	Home Health Care Services	-785	-801	-65	-493	-61	-17	-149
903622	Hospitals (Local Government)	-2,344	-2,617	-1,399	0	-16	0	-929
902622	Hospitals (State Government)	-2,767	-2,768	0	-2,647	0	-11	-109
	Total	6,967	6,892	4,646	1,733	-67	314	341

Source: QCEW Employees - Emsi 2017.4 Class of Worker

Shift Share Breakdown - Expected Change



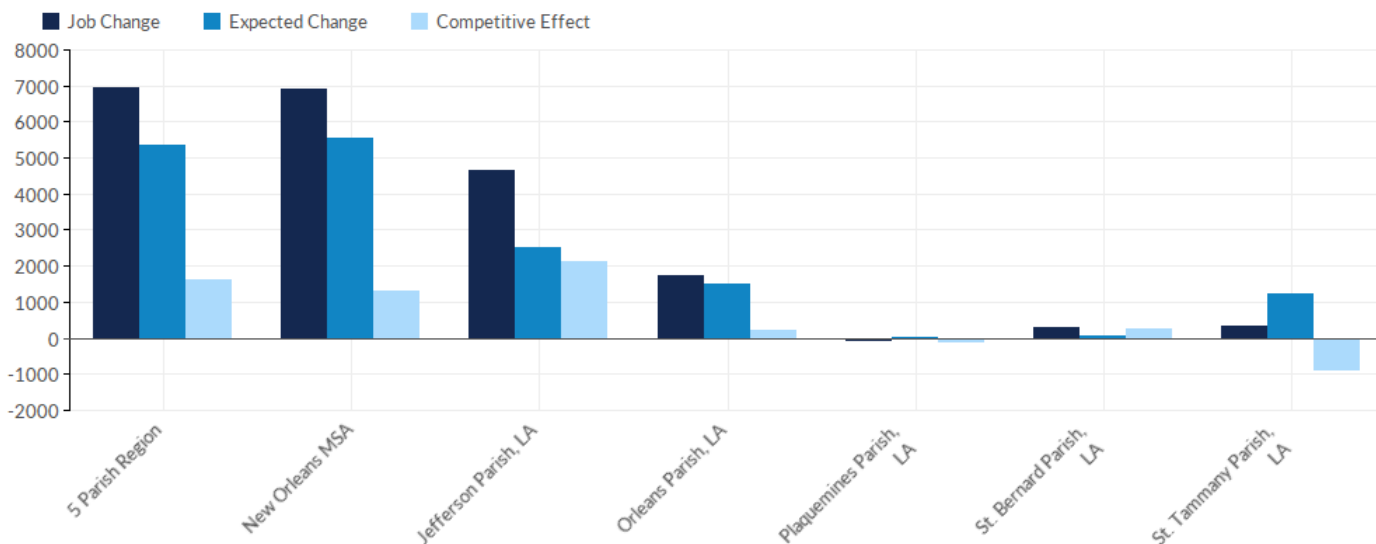
Industry	Description	5 Parish Region	New Orleans MSA	Jefferson Parish, LA	Orleans Parish, LA	Plaquemines Parish, LA	St. Bernard Parish, LA	St. Tammany Parish, LA
621610	Home Health Care Services	1,009	1,101	528	244	15	27	194
622110	General Medical and Surgical Hospitals	846	866	428	305	0	0	113
621111	Offices of Physicians (except Mental Health Specialists)	716	744	362	136	1	12	206
622310	Specialty (except Psychiatric and Substance Abuse) Hospitals	316	317	95	171	0	0	50
621210	Offices of Dentists	309	322	152	52	3	5	96
621492	Kidney Dialysis Centers	214	237	131	44	0	2	37
621493	Freestanding Ambulatory Surgical and Emergency Centers	213	213	140	18	0	1	55
621340	Offices of Physical, Occupational and Speech Therapists, and Audiologists	201	216	80	27	0	3	91
902622	Hospitals (State Government)	137	138	0	124	0	1	12
623311	Continuing Care Retirement Communities	133	133	0	75	0	0	58
621498	All Other Outpatient Care Centers	122	122	50	14	0	8	50
622210	Psychiatric and Substance Abuse Hospitals	110	110	19	60	0	0	31
	Total	5,339	5,567	2,533	1,502	26	66	1,214

Industry	Description	5 Parish Region	New Orleans MSA	Jefferson Parish, LA	Orleans Parish, LA	Plaquemines Parish, LA	St. Bernard Parish, LA	St. Tammany Parish, LA
621511	Medical Laboratories	109	110	88	9	0	0	12
903622	Hospitals (Local Government)	99	104	61	0	3	0	35
621420	Outpatient Mental Health and Substance Abuse Centers	94	105	20	46	0	0	28
623312	Assisted Living Facilities for the Elderly	89	89	46	35	0	0	7
621999	All Other Miscellaneous Ambulatory Health Care Services	87	88	27	6	1	1	53
623220	Residential Mental Health and Substance Abuse Facilities	78	78	29	44	0	0	5
621320	Offices of Optometrists	72	76	47	15	1	0	9
446110	Pharmacies and Drug Stores	72	76	34	21	0	2	14
621112	Offices of Physicians, Mental Health Specialists	67	70	31	31	0	0	6
621910	Ambulance Services	57	59	46	1	0	2	8
621399	Offices of All Other Miscellaneous Health Practitioners	56	56	32	5	0	1	19
621330	Offices of Mental Health Practitioners (except Physicians)	50	51	29	14	0	0	6
623210	Residential Intellectual and Developmental Disability Facilities	48	51	35	8	1	1	3
621310	Offices of Chiropractors	35	38	17	6	0	1	11
446130	Optical Goods Stores	28	29	20	2	0	0	6
541714	Research and Development in Biotechnology (except Nanobiotechnology)	17	17	2	5	1	0	9
621512	Diagnostic Imaging Centers	8	8	4	1	0	0	3
621491	HMO Medical Centers	3	3	0	2	0	0	1
541713	Research and Development in Nanotechnology	2	2	1	1	0	0	0
621410	Family Planning Centers	1	1	1	0	0	0	0
621391	Offices of Podiatrists	1	1	0	0	0	0	0
	Total	5,339	5,567	2,533	1,502	26	66	1,214

Industry	Description	5 Parish Region	New Orleans MSA	Jefferson Parish, LA	Orleans Parish, LA	Plaquemines Parish, LA	St. Bernard Parish, LA	St. Tammany Parish, LA
621991	Blood and Organ Banks	-1	-1	-1	0	0	0	0
339116	Dental Laboratories	-1	-1	0	0	0	0	0
532283	Home Health Equipment Rental	-1	-1	-1	0	0	0	0
623110	Nursing Care Facilities (Skilled Nursing Facilities)	-56	-61	-23	-19	-2	0	-12
	Total	5,339	5,567	2,533	1,502	26	66	1,214

Source: QCEW Employees - Emsi 2017.4 Class of Worker

Shift Share Breakdown - Competitive Effect



Industry	Description	5 Parish Region	New Orleans MSA	Jefferson Parish, LA	Orleans Parish, LA	Plaquemines Parish, LA	St. Bernard Parish, LA	St. Tammany Parish, LA
622110	General Medical and Surgical Hospitals	4,749	4,566	3,524	655	0	167	403
621111	Offices of Physicians (except Mental Health Specialists)	2,016	2,357	288	1,853	14	-78	-62
446110	Pharmacies and Drug Stores	428	435	63	208	5	22	129
621340	Offices of Physical, Occupational and Speech Therapists, and Audiologists	407	400	371	65	1	22	-52
623312	Assisted Living Facilities for the Elderly	379	400	226	-59	0	0	212
621511	Medical Laboratories	282	281	184	53	6	0	39
622210	Psychiatric and Substance Abuse Hospitals	274	274	146	-8	0	0	137
621399	Offices of All Other Miscellaneous Health Practitioners	228	229	232	2	0	0	-7
623220	Residential Mental Health and Substance Abuse Facilities	146	147	79	94	-2	0	-25
623311	Continuing Care Retirement Communities	145	145	0	212	0	0	-66
621420	Outpatient Mental Health and Substance Abuse Centers	139	118	50	177	0	0	-88
621991	Blood and Organ Banks	128	128	138	0	0	0	-9
	Total	1,628	1,326	2,113	231	-93	248	-873

Industry	Description	5 Parish Region	New Orleans MSA	Jefferson Parish, LA	Orleans Parish, LA	Plaquemines Parish, LA	St. Bernard Parish, LA	St. Tammany Parish, LA
621310	Offices of Chiropractors	116	118	33	8	0	2	73
621210	Offices of Dentists	109	146	32	32	-1	18	28
623110	Nursing Care Facilities (Skilled Nursing Facilities)	96	61	-231	260	-50	51	66
446130	Optical Goods Stores	83	96	77	19	0	0	-13
621330	Offices of Mental Health Practitioners (except Physicians)	58	67	4	45	0	0	9
532283	Home Health Equipment Rental	25	25	26	11	0	0	-13
621491	HMO Medical Centers	20	20	0	1	0	0	18
621492	Kidney Dialysis Centers	8	-78	-41	49	0	-5	5
621410	Family Planning Centers	0	0	-11	11	0	0	0
621391	Offices of Podiatrists	-10	-16	9	-7	0	0	-11
623210	Residential Intellectual and Developmental Disability Facilities	-16	-39	-145	-111	7	88	145
621320	Offices of Optometrists	-19	-34	-87	12	31	-1	26
541714	Research and Development in Biotechnology (except Nanobiotechnology)	-22	-22	-3	0	-6	0	-13
541713	Research and Development in Nanotechnology	-31	-32	-18	-7	-1	0	-5
621512	Diagnostic Imaging Centers	-39	-38	-26	16	0	-1	-28
621498	All Other Outpatient Care Centers	-43	-28	-87	56	0	0	-12
621910	Ambulance Services	-50	-44	-99	12	0	9	28
621493	Freestanding Ambulatory Surgical and Emergency Centers	-50	-28	-25	29	0	0	-56
339116	Dental Laboratories	-54	-54	-29	-1	-1	8	-32
621112	Offices of Physicians, Mental Health Specialists	-119	-122	-75	-68	0	0	23
621999	All Other Miscellaneous Ambulatory Health Care Services	-121	-116	-50	17	-2	1	-88
	Total	1,628	1,326	2,113	231	-93	248	-873

Industry	Description	5 Parish Region	New Orleans MSA	Jefferson Parish, LA	Orleans Parish, LA	Plaquemines Parish, LA	St. Bernard Parish, LA	St. Tammany Parish, LA
622310	Specialty (except Psychiatric and Substance Abuse) Hospitals	-495	-506	-388	101	0	0	-207
621610	Home Health Care Services	-1,793	-1,902	-593	-737	-76	-44	-343
903622	Hospitals (Local Government)	-2,443	-2,722	-1,460	0	-19	0	-964
902622	Hospitals (State Government)	-2,904	-2,905	0	-2,772	0	-12	-120
	Total	1,628	1,326	2,113	231	-93	248	-873

Source: QCEW Employees - Emsi 2017.4 Class of Worker

Appendix A - Industries

Code	Description
339116	Dental Laboratories
446110	Pharmacies and Drug Stores
446130	Optical Goods Stores
532283	Home Health Equipment Rental
541713	Research and Development in Nanotechnology
541714	Research and Development in Biotechnology (except Nanobiotechnology)
621111	Offices of Physicians (except Mental Health Specialists)
621112	Offices of Physicians, Mental Health Specialists
621210	Offices of Dentists
621310	Offices of Chiropractors
621320	Offices of Optometrists
621330	Offices of Mental Health Practitioners (except Physicians)
621340	Offices of Physical, Occupational and Speech Therapists, and Audiologists
621391	Offices of Podiatrists
621399	Offices of All Other Miscellaneous Health Practitioners
621410	Family Planning Centers
621420	Outpatient Mental Health and Substance Abuse Centers
621491	HMO Medical Centers
621492	Kidney Dialysis Centers
621493	Freestanding Ambulatory Surgical and Emergency Centers
621498	All Other Outpatient Care Centers
621511	Medical Laboratories
621512	Diagnostic Imaging Centers
621610	Home Health Care Services
621910	Ambulance Services
621991	Blood and Organ Banks
621999	All Other Miscellaneous Ambulatory Health Care Services
622110	General Medical and Surgical Hospitals
622210	Psychiatric and Substance Abuse Hospitals

Code	Description
622310	Specialty (except Psychiatric and Substance Abuse) Hospitals
623110	Nursing Care Facilities (Skilled Nursing Facilities)
623210	Residential Intellectual and Developmental Disability Facilities
623220	Residential Mental Health and Substance Abuse Facilities
623311	Continuing Care Retirement Communities
623312	Assisted Living Facilities for the Elderly
902622	Hospitals (State Government)
903622	Hospitals (Local Government)

Appendix B - Data Sources and Calculations

Industry Data

Emsi industry data have various sources depending on the class of worker. (1) For QCEW Employees, Emsi primarily uses the QCEW (Quarterly Census of Employment and Wages), with supplemental estimates from County Business Patterns. (2) Non-QCEW employees data are based on a number of sources including QCEW, Current Employment Statistics, County Business Patterns, BEA State and Local Personal Income reports, the National Industry-Occupation Employment Matrix (NIOEM), the American Community Survey, and Railroad Retirement Board statistics. (3) Self-Employed and Extended Proprietor classes of worker data are primarily based on the American Community Survey, Nonemployer Statistics, and BEA State and Local Personal Income Reports. Projections for QCEW and Non-QCEW Employees are informed by NIOEM and long-term industry projections published by individual states.

Staffing Patterns Data

The staffing pattern data in this report are compiled from several sources using a specialized process. For QCEW and Non-QCEW Employees classes of worker, sources include Occupational Employment Statistics, the National Industry-Occupation Employment Matrix, and the American Community Survey. For the Self-Employed and Extended Proprietors classes of worker, the primary source is the American Community Survey, with a small amount of information from Occupational Employment Statistics.

State Data Sources

This report uses state data from the following agencies: Louisiana Department of Labor